

RAPID Fittings Stainless Steel AISI 316L (1.4404) (Push-on)

Rapid version

Operating pressure Technical vacuum up to maximum pressure as stated in the respective specification table under PN.

Temperature range: -40 °C to +140 °C (for restrictions see specification table)

Application

Rapid fittings are used with aggressive gaseous and liquid media, where elastomer seals are not resistant. With guide cone and cap nut these fittings are particularly suited to very harsh operating conditions.

CHARACTERISTICS
BODY MATERIAL / SUITABILITY

Stainless steel AISI 316L	Corresponds to 1.4404 stainless steel . Suitable for many aggressive media. The FKM sealing ring is FDA-compliant and can be used in the food and pharmaceutical industries.
Other materials	see relevant products
Approval	NSF/ANSI 169

TUBE

Outside diameter D [mm] Inside diameter d [mm]	6/4 8/6 10/8	12/10
Perm. tolerance outside D	±0.1	±0.15
Perm. tolerance inside d	±0.1	±0.15
Max. wall thickness tolerance	±0.1 With very soft tubes, for example PVC tubes, variations in the outside diameter or wall thickness of up to + 5/10 are allowable. In case of doubt please ask.	
Permitted grades	Polyamide (PA), polyurethane (PU), polyethylene (PE), fabric reinforced PVC, fluorine polymer (FEP and PFA)	

THREAD

External thread	"G" cylindrical thread: Whitworth pipe thread DIN ISO 228-1 G 1/8 up to G 1/2
External thread	"R" conical thread: Whitworth pipe thread DIN 2999-1 and ISO 7/1 R 1/8 up to R 1/2. Designed for pairing with internal thread according to DIN ISO 228-1.

OPERATING PRESSURE / TEMPERATURE

Metal version	PN 25 T _{min} -40 °C T _{max} +140 °C	Means that the fitting can be used up to the given nominal pressure PN within the specified temperature range "T". Allowable operating pressure and operating temperature of pipe/tube must be observed!
----------------------	--	--

THREAD SEAL

Cylindrical threaded nipple	Seal with sealing rings made of copper, fiber, aluminium, polyamide or hard PVC. Seal with chambered O-ring (FDA-compliant) on request
Tapered threaded nipple	Seal with Teflon tape winding (FDA-compliant) on request

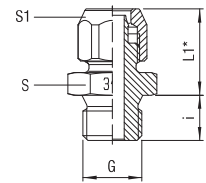
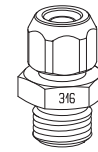
Straight, 90° elbow and T-adaptors, male	not suitable for rotating or oscill. movements	Some types of fittings rotate 360° in order to facilitate alignment during assembly or for compensating movement.
---	--	---

Straight Adaptor - Male

Price group	13	PN 25	T _{min} -40 °C T _{max} +140 °C	Thread cylindrical
-------------	-----------	-------	---	--------------------


 Stainless steel
AISI 316L

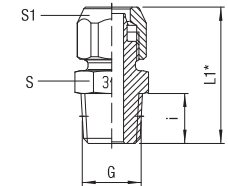
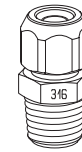
for tube D/d	G	i	L1*	S1	S	Weight in [g]	Type	Order number	Price
6/4	G 1/8	8	18,6	12	13	14,8	151X4-6/4-1/8	360014	o. r.
6/4	G 1/4	10	19,1	12	17	23,9	151X4-6/4-1/4	360015	o. r.
8/6	G 1/8	8	18,6	14	13	17,5	151X4-8/6-1/8	360020	o. r.
8/6	G 1/4	10	19	14	17	26,8	151X4-8/6-1/4	360021	o. r.
10/8	G 1/8	8	20	17	14	27,5	151X4-10/8-1/8	360029	o. r.
10/8	G 1/4	10	20,5	17	17	32	151X4-10/8-1/4	360030	o. r.
10/8	G 3/8	10	20,5	17	19	40,7	151X4-10/8-3/8	360031	o. r.
12/10	G 3/8	10	22	19	19	43,8	151X4-12/10-3/8	360043	o. r.
12/10	G 1/2	12	22,5	19	24	47,3	151X4-12/10-1/2	360044	o. r.

Illustration

Straight Adaptor - Male

Price group	13	PN 25	T _{min} -40 °C T _{max} +140 °C	Thread conical
-------------	-----------	-------	---	----------------


 Stainless steel
AISI 316L

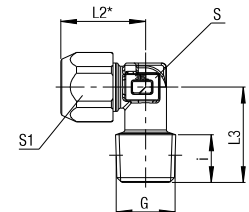
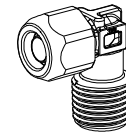
for tube D/d	G	i	L1*	S1	S	Weight in [g]	Type	Order number	Price
6/4	R 1/8	7,5	26,1	12	12	14,2	151X4-6/4-1/8K	360414	o. r.
6/4	R 1/4	11	30,1	12	14	21,8	151X4-6/4-1/4K	360415	o. r.
8/6	R 1/8	7,5	26,1	14	12	16,7	151X4-8/6-1/8K	360420	o. r.
8/6	R 1/4	11	30,1	14	14	25,1	151X4-8/6-1/4K	360421	o. r.
10/8	R 1/8	7,5	27,5	17	14	27,9	151X4-10/8-1/8K	360429	o. r.
10/8	R 1/4	11	31,5	17	14	30,7	151X4-10/8-1/4K	360430	o. r.
10/8	R 3/8	11,5	32	17	17	41,2	151X4-10/8-3/8K	360431	o. r.
12/10	R 3/8	11,5	33,5	19	17	34	151X4-12/10-3/8K	360443	o. r.
12/10	R 1/2	14	36,5	19	22	34,0	151X4-12/10-1/2K	360444	o. r.

Illustration

90° Elbow Adaptor - Male

Price group	13	PN 25	T _{min} -40 °C T _{max} +140 °C	Thread conical
-------------	-----------	-------	---	----------------


 Stainless steel
AISI 316L

for tube D/d	G	i	L2*	L3	S1	S	Weight in [g]	Type	Order number	Price
6/4	R 1/8	7,5	17,6	16,9	12	8	15,2	150X4M-6/4-1/8K	361301	o. r.
6/4	R 1/4	10,5	17,6	19,9	12	9	20,1	150X4M-6/4-1/4K	361302	o. r.
8/6	R 1/8	7,5	18,7	18	14	9	19	150X4M-8/6-1/8K	361303	o. r.
8/6	R 1/4	10,5	18,5	21	14	10	24,3	150X4M-8/6-1/4K	361304	o. r.
8/6	R 3/8	10,8	26,5	24,5	14	13	41,4	150X4-8/6-3/8K	361022	o. r.
10/8	R 1/8	9	24,5	18,5	17	10	27	150X4-10/8-1/8K	361029	o. r.
10/8	R 1/4	10,5	24,5	21	17	10	30,6	150X4-10/8-1/4K	361030	o. r.
10/8	R 3/8	10,8	27	24,5	17	13	46,2	150X4-10/8-3/8K	361031	o. r.
12/10	R 3/8	11,3	29	25	19	13	48,6	150X4-12/10-3/8K	361043	o. r.
12/10	R 1/2	14,2	30,5	29	19	17	66,1	150X4-12/10-1/2K	361044	o. r.

Illustration

90° Elbow Adaptor - Male - Positionable

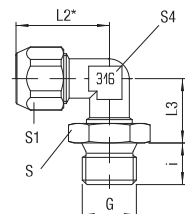
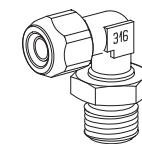
Price group	13	PN 16	T _{min} 0 °C T _{max} +140 °C	Thread cylindrical
-------------	-----------	-------	---	--------------------

Seal: FKM (FDA-compliant)

not suitable for rotating or oscill. movement


 Stainless steel
AISI 316L

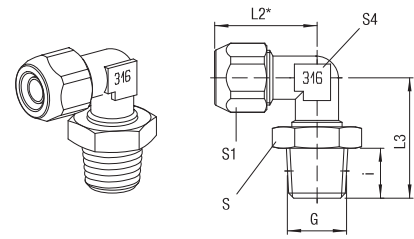
for tube D/d	G	i	L2*	L3	S1	S4	S	Weight in [g]	Type	Order number	Price
6/4	G 1/8	8	22,5	14	12	10	13	24,9	130X4-6/4-1/8FF	361114	o. r.
6/4	G 1/4	10	22,5	14,5	12	10	17	28,6	130X4-6/4-1/4FF	361115	o. r.
8/6	G 1/8	8	22,5	14	14	10	13	25,6	130X4-8/6-1/8FF	361120	o. r.
8/6	G 1/4	10	22,5	14,5	14	10	17	30,2	130X4-8/6-1/4FF	361121	o. r.
10/8	G 1/4	10	24	14,5	17	10	17	36,1	130X4-10/8-1/4FF	361130	o. r.

Illustration


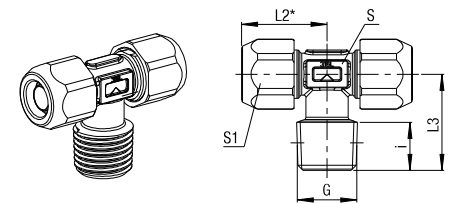
* Approx. dimension with cap nut tightened

90° Elbow Adaptor - Male - Positionable

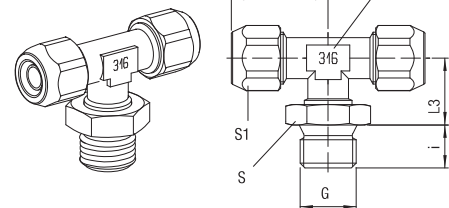
Price group	13	PN	16	T _{min}	0 °C	Thread	conical	Seal: FKM (FDA-compliant)	not suitable for rotating or oscill. movement		NSF	Stainless steel	AISI 316L
for tube D/d	G	i	L2*	L3	S1	S4	S	Weight in [g]	Type	Order number	Price		
6/4	R 1/8	7.5	22.5	21.5	12	10	13	26	130X4-6/4-1/8KFF	361214	o. r.		
6/4	R 1/4	11	22.5	25.5	12	10	17	29.4	130X4-6/4-1/4KFF	361215	o. r.		
8/6	R 1/8	7.5	22.5	21.5	14	10	13	25.2	130X4-8/6-1/8KFF	361220	o. r.		
8/6	R 1/4	11	22.5	25.5	14	10	17	30.4	130X4-8/6-1/4KFF	361221	o. r.		
10/8	R 1/4	11	24	25.5	17	10	17	36.7	130X4-10/8-1/4KFF	361230	o. r.		

Illustration

T-Adaptor - Male

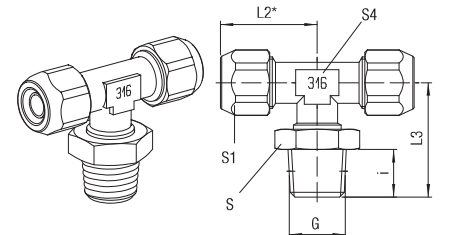
Price group	13	PN	25	T _{min}	-40 °C	Thread	conical				NSF	Stainless steel	AISI 316L
for tube D/d	G	i	L2*	L3	S1	S	Weight in [g]	Type	Order number	Price			
6/4	R 1/8	7.6	17.6	16.9	12	8	24.2	141X4M-6/4-1/8K	361801	o. r.			
6/4	R 1/4	10.5	17.6	19.9	12	9	29.1	141X4M-6/4-1/4K	361802	o. r.			
8/6	R 1/8	7.5	18.4	18	14	9	30.3	141X4M-8/6-1/8K	361803	o. r.			
8/6	R 1/4	10.5	18.7	21	14	10	35.7	141X4M-8/6-1/4K	361804	o. r.			
10/8	R 1/8	9	25	18.5	17	10	46.9	141X4-10/8-1/8K	361429	o. r.			
10/8	R 1/4	10.5	25	21	17	10	50.8	141X4-10/8-1/4K	361430	o. r.			
10/8	R 3/8	11.3	27	25	17	13	69.5	141X4-10/8-3/8K	361431	o. r.			
12/10	R 3/8	11.3	29	25	19	13	74.2	141X4-12/10-3/8K	361443	o. r.			
12/10	R 1/2	14.2	30.5	29	19	17	106	141X4-12/10-1/2K	361444	o. r.			

Illustration

T-Adaptor - Male - Positionable

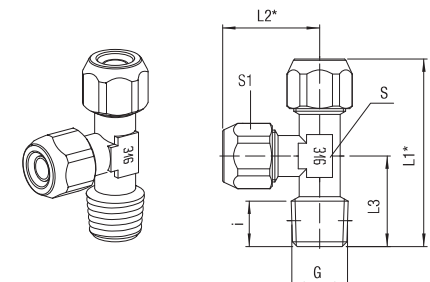
Price group	13	PN	16	T _{min}	0 °C	Thread	cylindrical	Seal: FKM (FDA-compliant)	not suitable for rotating or oscill. movement		NSF	Stainless steel	AISI 316L
for tube D/d	G	i	L2*	L3	S1	S4	S	Weight in [g]	Type	Order number	Price		
6/4	G 1/8	8	22.5	14	12	10	13	35.8	121X4-6/4-1/8FF	361514	o. r.		
6/4	G 1/4	10	22.5	14.5	12	10	17	38.3	121X4-6/4-1/4FF	361515	o. r.		
8/6	G 1/8	8	22.5	14	14	10	13	37.5	121X4-8/6-1/8FF	361520	o. r.		
8/6	G 1/4	10	22.5	14.5	14	10	17	41.4	121X4-8/6-1/4FF	361521	o. r.		
10/8	G 1/4	10	24	14.5	17	10	17	55.0	121X4-10/8-1/4FF	361530	o. r.		

Illustration

T-Adaptor - Male - Positionable

Price group	13	PN	16	T _{min}	0 °C	Thread	conical	Seal: FKM (FDA-compliant)	not suitable for rotating or oscill. movement		NSF	Stainless steel	AISI 316L
for tube D/d	G	i	L2*	L3	S1	S4	S	Weight in [g]	Type	Order number	Price		
6/4	R 1/8	7.5	22.5	21.5	12	10	13	35.8	121X4-6/4-1/8KFF	361614	o. r.		
6/4	R 1/4	11	22.5	25.5	12	10	17	39.6	121X4-6/4-1/4KFF	361615	o. r.		
8/6	R 1/8	7.5	22.5	21.5	14	10	13	37.5	121X4-8/6-1/8KFF	361620	o. r.		
8/6	R 1/4	11	22.5	25.5	14	10	17	42.1	121X4-8/6-1/4KFF	361621	o. r.		
10/8	R 1/4	11	24	25.5	17	10	17	55	121X4-10/8-1/4KFF	361630	o. r.		

Illustration

Side T-Adaptor - Male

Price group	13	PN	25	T _{min}	-40 °C	Thread	conical				NSF	Stainless steel	AISI 316L
for tube D/d	G	i	L1*	L2*	L3	S1	S	Weight in [g]	Type	Order number	Price		
6/4	R 1/8	9	41	22.5	18.5	12	10	30	142X4-6/4-1/8K	361714	o. r.		
6/4	R 1/4	10.5	43.5	22.5	21	12	10	32.8	142X4-6/4-1/4K	361715	o. r.		
8/6	R 1/8	9	41	22.5	18.5	14	10	32.1	142X4-8/6-1/8K	361720	o. r.		
8/6	R 1/4	10.5	43.5	22.5	21	14	10	34.8	142X4-8/6-1/4K	361721	o. r.		
10/8	R 1/8	9	43.5	25	18.5	17	10	44.4	142X4-10/8-1/8K	361729	o. r.		
10/8	R 1/4	10.5	46	25	21	17	10	55.4	142X4-10/8-1/4K	361730	o. r.		
10/8	R 3/8	11.3	52	27	25	17	13	68	142X4-10/8-3/8K	361731	o. r.		

Illustration


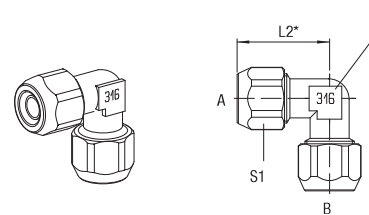
* Approx. dimension with cap nut tightened

90° Elbow Connector

 Price group **13** PN 25 $T_{min} -40\text{ °C}$ $T_{max} +140\text{ °C}$

 Stainless steel
AISI 316L

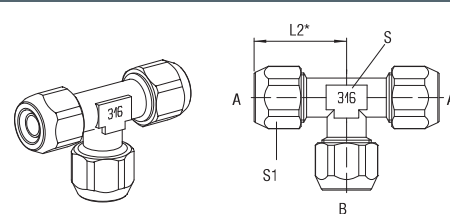
for pipe A D/d	for pipe B D/d	L2*	S1	S	Weight in [g]	Type	Order number	Price
6/4	6/4	22.5	12	10	26.2	155X4-6/4	362135	o. r.
8/6	8/6	22.5	14	10	28.3	155X4-8/6	362137	o. r.
10/8	10/8	25	17	10	41.4	155X4-10/8	362140	o. r.
12/10	12/10	29	19	13	60	155X4-12/10	362144	o. r.

Illustration

T-Connector

 Price group **13** PN 25 $T_{min} -40\text{ °C}$ $T_{max} +140\text{ °C}$

 Stainless steel
AISI 316L

for pipe A D/d	for pipe B D/d	L1*	L2*	S1	S	Weight in [g]	Type	Order number	Price
6/4	6/4	22.5	22.5	12	10	37	154X4-6/4	362335	o. r.
8/6	8/6	22.5	22.5	14	10	40.7	154X4-8/6	362337	o. r.
10/8	10/8	25	25	17	10	61	154X4-10/8	362340	o. r.
12/10	12/10	29	29	19	13	115	154X4-12/10	362344	o. r.

Illustration


* Approx. dimension with cap nut tightened