

# TNA Ex mb SERIES

## Coils, ATEX

**TNA Series** coils are 36 mm wide, suitable for armature tubes with diameter 14,5 mm.



### TECHNICAL DATA

ELECTRICAL CONNECTIONS	three-pole cable Ø1,5 lenght cm 300 PTB 03 ATEX 2086 X
PROTECTION DEGREE	IP 65 EN 60529 (DIN 40050)
WINDING INSULATION CLASS	class F
COIL INSULATION CLASS	class F (155°C)
COIL ENCAPSULATION MATERIALS	Black PET (polyethylene)
FLUID MAX TEMPERATURE	+80°C

### DIN CONNECTIONS CLASS H

CODE	VOLTAGE / FREQUENCY	POWER	RATE CURRENT	FUSE	AMBIENT TEMPERATURE
TNA4X024D4	24 V / 50-60 Hz	7,2 VA	315 mA	800 mA	-20°C +50°C
TNA5X110D4	110 V / 50-60 Hz	9,13 VA	83 mA	200 mA	-20°C +50°C
TNA05224D4	220-240 V / 50-60 Hz	7,7-9,24 VA	35-39 mA	100 mA	-20°C +50°C
TNA10012C4	12 V DC	9,9 W	623 mA	1600 mA	-20°C +50°C
TNA10024C4	24 V DC	10,1 W	421 mA	800 mA	-20°C +50°C

- Tolerances on nominal voltages: ±10%.
- Each solenoid operator has to be protected by a fuse according to the rated current (max. 3x rated current according to IEC 60127-2-1). The fuse can be accommodated in the associated device or must be added separately. The rated fuse voltage has to be equal or higher than the nominal solenoid voltage. The shutdown capability has to be equal or higher than the maximum assumed short-circuit current at the installation point (usually 1500 A).

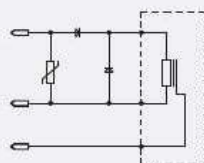


### According to Directive 2014/34/EU ATEX

II 2G Ex mb IIC T4 Gc  
II 2D Ex mb tb IIIC T130°C Db

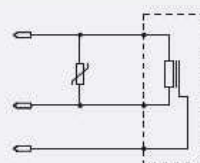
Spulenchaltung - Gleichstrom  
coil wiring - direkt current  
avvolgimento bobina - corrente continua

blau  
blue  
blu  
  
braun  
brown  
marrone  
  
grün/gelb  
green/yellow  
verde/giallo

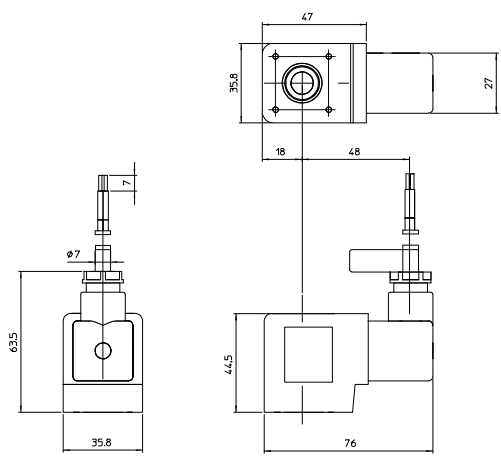


Spulenchaltung - Gleichstrom  
coil wiring - direkt current  
avvolgimento bobina - corrente continua

blau  
blue  
blu  
  
braun  
brown  
marrone  
  
grün/gelb  
green/yellow  
verde/giallo



■ Other voltages and power absorptions available on demand and for minimum order quantities. Please contact ODE for further information.



Coils ■ Atex ■ **TNA EX M SERIES**

I **TNA** II **10** III **024** IV **C** V **4** **CODIFICATION**

**I. SERIES**  
**TNA** - Width 36 - tube Ø 14  
 with integrated connector

**II. POWER RATING**  
**4X** - 7,2 VA  
**05** - 5 W - 7 W - 7,7 VA - 9,24 VA  
 - 10 VA - 11,5 VA - 12,5 VA - 13,5 VA  
**5X** - 9,13 VA  
**10** - 9,9 W - 10,1 W

**III. VOLTAGE**  
**012** - 12 V  
**024** - 24 V  
**110** - 110 V  
**224** - 220-240 V

**IV. FREQUENCY**  
**C** - D.C. ED 100%  
**D** - 50/60 Hz ED 100%

**V. APPROVALS**  
**4** - ATEX approval