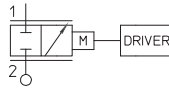
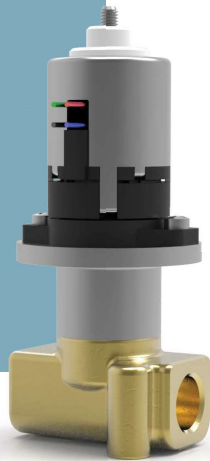


21JN1S SERIES

Motorized valves, 2-way

21JN1S are proportional valves driven by a bipolar stepper motor. Thanks to this type of technology it is possible to minimize the effects of hysteresis and to improve the response time and the repeatability of performance over time. Minimum operational pressure is not required. This motorized valve can be associated to a control driver that can be interfaced with PLC systems, 4-20 mA and 0-10 V. *Please see Driver in Chapter Control & Automation.*



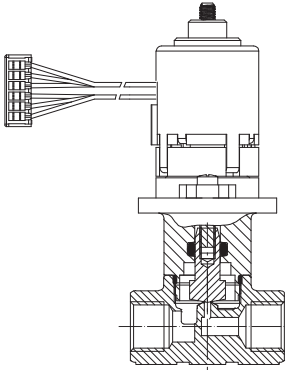
TECHNICAL DATA

PORT CONNECTION	GI/8
SEALING MATERIALS	FKM
MEDIUM TEMPERATURE	25°C
FLUIDS	water, air, inert gases
VISCOSITY	max. 12 cSt
INSTALLATION	with actuator upright
MOPD	12 bar
ORIFICE DIAMETER	1.2 mm
TRAVEL PER STEP	0,021 mm
AMBIENT TEMPERATURE	-40°C +85°C
POWER SUPPLY	24 V DC

MATERIALS

BODY	Brass on request, PPS, Stainless Steel AISI 300
ARMATURE TUBE	Stainless steel AISI 300
PLUNGER	Stainless steel AISI 300
SHUTTER	V=FKM, on request B=NBR
ORIFICE	Brass on request, PPS, Stainless Steel AISI 300

PIPE	ORIFICE SIZE	Kv	PRESSURE [bar]		CODE	DRAWING
			MIN	MOPD (DC)		
ISO 228/1	Ø [mm]	[l/min]	0	12	21JN1SV12-P3-M002	1
GI/8	1,2	1				



Proportional technology ■ Motorized valves ■ 2-way ■ 21JN1S SERIES

