

21DZ2 SERIES

Manual Valves, Aseptic diaphragm valves

Aseptic diaphragm valve with manual operation, ideal for use in critical applications such as those in the chemical, pharmaceutical, food & beverage sectors. Specific body design to ensure total separation between medium and actuation.

Diaphragm compliant with EC Regulation 1935/2004, FDA 21CFR 177.1550, USP40.

Bidirectional use thanks to the symmetrical body design. Self-draining body design.

Compatible with CIP / SIP processes.



TECHNICAL DATA

NOMINAL SIZE	WELDED	TRI-CLAMP
	DN8 ÷ DN50	DN8 ÷ DN50
DIAPHRAGM SIZE	8 ÷ 50	
DIAPHRAGM LEAKAGE CLASS	class A (EN 12266-1)	
FLUID TEMPERATURE	-10°C +150°C	
AMBIENT TEMPERATURE	-10°C +80°C	

MATERIALS

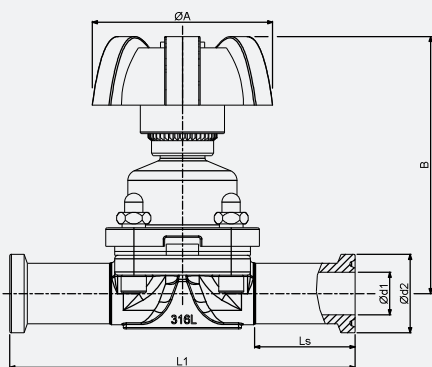
VALVE BODY	stainless steel AISI 316L (Ra ≤ 0,4Qm)
DIAPHRAGM	PTFE + EPDM (PTFE in contact with the fluid)
HANDWHEEL	PA

▪ **CE**
- 2014/68/EU (PED)
up to 1" - art. 4.3
above 1" - cat. 1 module A

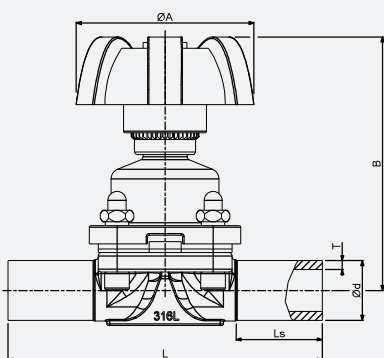
▪ Diaphragm compliant with
EC Reg. 1935/2004,
FDA 21CFR 177.1550, USP40

▪ Please check the compatibility of the fluids in contact with the materials at RFQ stage.

DRAWING 1



DRAWING 2



DIM WELDED

NOMINAL SIZE	DIAPHRAGM SIZE	Ø A mm	B mm	Ls mm	L mm	DIN 11850-2 DIN 11866-A		DIN 11850-3		ASME BPE		ISO 1127 DIN 11866-B		Weight kg
						Ø d mm	T mm	Ø d mm	T mm	Ø d mm	T mm	Ø d mm	T mm	
DN8	8	40	64	20	72	-	-	-	-	6,35	0,89	-	-	0,3
DN10	8	40	64	20	72	-	-	-	-	9,53	0,89	-	-	0,3
DN15	8	50	64	20	72	-	-	-	-	12,7	1,65	-	-	0,3
DN15	10	65	85	29	108	19	1,5	20	2	-	-	21,3	1,6	0,3
DN20	10	65	85	29	108	-	-	-	-	19,05	1,65	-	-	0,6
DN20	25	85	102	26	120	23	1,5	24	2	-	-	26,9	1,6	0,6
DN25	25	85	102	26	120	29	1,5	30	2	25,4	1,65	33,7	2	1,35
DN40	40	105	115	30	153	41	1,5	43	2	38,1	1,65	48,3	2	2,5
DN50	50	125	133	30	173	53	1,5	54	2	50,8	1,65	60,3	2	3,6

DIM TRI-CLAMP

NOMINAL SIZE	DIAPHRAGM SIZE	Ø A mm	B mm	Ls mm	ASME BPE			ISO 1127 DIN 11866-B			DIN 11850 DIN 32676-A			Weight kg
					Ø d1 mm	Ø d2 mm	L1 mm	Ø d1 mm	Ø d2 mm	L1 mm	Ø d1 mm	Ø d2 mm	L1 mm	
DN8	8	40	64	15,5	4,57	25	63,5	-	-	-	-	-	-	0,35
DN10	8	40	64	15,5	7,75	25	63,5	-	-	-	-	-	-	0,35
DN15	8	50	64	15,5	9,4	25	63,5	-	-	-	-	-	-	0,35
DN15	10	65	85	34	-	-	-	18,1	50,5	108	16	34	108	0,35
DN20	10	65	85	34	15,75	25	101,6	-	-	-	-	-	-	0,65
DN20	25	85	102	30	-	-	-	23,7	50,5	117	20	34	117	0,65
DN25	25	85	102	30	22,1	50,5	114,3	29,7	50,5	127	26	50,5	127	1,45
DN40	40	105	115	33	34,8	50,5	139,7	44,3	64	159	38	50,5	159	2,6
DN50	50	125	133	39	47,5	64	158,8	56,3	77,5	190	50	64	190	3,85

2/2 NC - ASME BPE

NOMINAL DIAMETER	DIAPHRAGM SIZE	Kv	Kv	DIFFERENTIAL PRESSURE [bar]		MAX ALLOWABLE PRESSURE [bar]	CODE
		[m ³ /h]	[l/min]	MIN	MAX	PS	
DN8	8	0,4	6,7	0	10	16	21DZ2AMAT008A**
DN10	8	1	16,7	0	10	16	21DZ2AMAT010A**
DN15	8	1,1	18,3	0	10	16	21DZ2AMAT015A**
DN20	10	5,5	91,7	0	10	16	21DZ2BMAT020A**
DN25	25	11,4	190,0	0	10	16	21DZ2CMAT025A**
DN40	40	17,5	291,7	0	10	16	21DZ2DMAT040A**
DN50	50	34,4	573,3	0	10	16	21DZ2EMAT050A**

2/2 NC - ISO, DIN

NOMINAL DIAMETER	DIAPHRAGM SIZE	Kv	Kv	DIFFERENTIAL PRESSURE [bar]		MAX ALLOWABLE PRESSURE [bar]	CODE
		[m ³ /h]	[l/min]	MIN	MAX	PS	
DN15	10	4,9	81,7	0	10	16	21DZ2BMAT015A**
DN20	25	10,2	170,0	0	10	16	21DZ2CMAT020A**
DN25	25	11,4	190,0	0	10	16	21DZ2CMAT025A**
DN40	40	17,5	291,7	0	10	16	21DZ2DMAT040A**
DN50	50	34,4	573,3	0	10	16	21DZ2EMAT050A**

I	II	III	IV	V	VI	VII	VIII
21	DZ2	CM	A	T	025	A	W4
I. 2 WAY 1 ELEMENT II. SERIES III. DIAPHRAGM SIZE AM - 8 BM - 10 CM - 25 DM - 40 EM - 50 IV. BODY MATERIAL A - AISI 316L		V. DIAPHRAGM MATERIAL T - PTFE+EPDM (2-layer diaphragm)	VI. NOMINAL DIAMETER 008 010 015 020 025 040 050		VII. POLISHING A - Mechanical polishing B - Electropolishing	VIII. PROCESS CONNECTIONS W2 - Welded DIN 11850-2 DIN 11866 A W3 - Welded DIN 11850-3 W4 - Welded ASME BPE W5 - Welded ISO 1127 DIN 11866 B C1 - Tri-clamp ASME BPE C2 - Tri-clamp DIN 32676-B (ISO 1127) C3 - Tri-clamp DIN 32676-A (DIN 11850)	CODIFICATION Other standards available on request