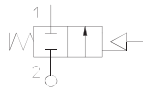


211A SERIES

Pneumatic valves, Angle seat valves

211A are pneumatically actuated angle seat valves that come with:

- optimized body design for high flow rate
- optimized body design that reduces water hammer effects
- corrosion resistant body and actuator housing
- optical position indicator
- self adjusting stem packing for long service life
- 360° adjustable actuator
- Easily convertible design from NC to NO or double acting



TECHNICAL DATA

PIPES	G 1/2 ÷ G 2
ACTUATOR SIZE	ø 50 mm (stainless steel) ø 70 mm (PA66)
FLOW DIRECTION	below seat
CONTROL TYPE	single acting normally open, normally closed and double acting
FLUID TEMPERATURE	-40°C +180°C
AMBIENT TEMPERATURE	-10°C +80°C (according to Atex requirements)
VISCOSITY	max 600 cSt
PILOT FLUID	dry or lubricated air and neutral fluids
PILOT FLUID TEMPERATURE	max + 60°C

MATERIALS

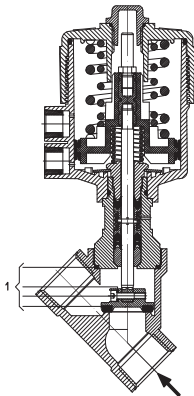
VALVE BODY	stainless steel AISI 316
MAIN SEAL	PTFE
STEM PACKING	PTFE, FKM
ACTUATOR HOUSING	glass fibre reinforced PA66 or stainless steel AISI 316
ACTUATOR GASKETS	NBR

■ CE

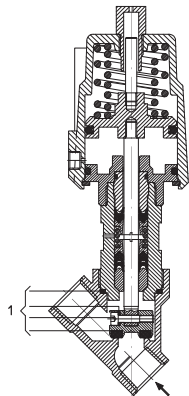
- 2014/68/EU (PED)
up to 1" - art. 4.3
above 1" - cat. I module A
- 2014/34/EU (ATEX) Available on request.
Refer to next pages for the complete marking

- Please check the compatibility of the fluids in contact with the materials at RFQ stage.
- For pilot valve please refer to Series 31A of Chapter 1.

NC, PA66 ACTUATOR

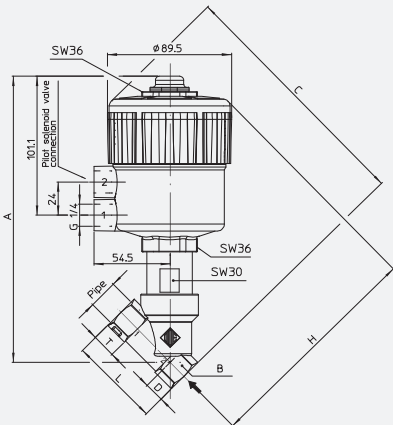


NC, STAINLESS
STEEL ACTUATOR



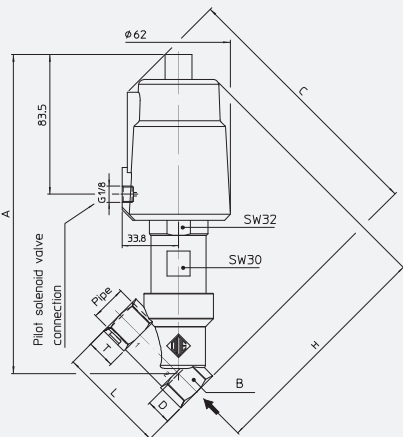
Process Valves & Components ■ Pneumatic valves ■ Angle seat valves ■ **211A SERIES**

DRAWING 1



PIPE	WEIGHT	DIMENSIONS [mm]						
ISO 228/1	[kg]	A	B	C	D	H	L	T
G1/2	1.4	206,8	SW27	178,7	15,4	163,3	65	17
G3/4	1.5	211,7	SW32	188,6	21,9	166,7	75,5	19
G1	1.8	220,1	SW41	197,8	25,1	172,7	90	21
G1 1/4	2.4	235,9	SW50	212,3	28,5	183,8	110	24
G1 1/2	2.7	238,9	SW55	217	31	186	122	25,2
G2	3.9	247,8	SW70	229,7	37,5	192,2	151	28,5

DRAWING 2



PIPE	WEIGHT	DIMENSIONS [mm]						
ISO 228/1	[kg]	A	B	C	D	H	L	T
G1/2	1.6	190,6	SW27	156	15,4	139,7	65	17
G3/4	1.7	190,8	SW32	162	21,9	139,8	75	19
G1	2.1	200,3	SW41	168	25,1	146,6	90	20,5

2/2 NC

PIPE	ORIFICE SIZE	Kv	ACTUATOR	ACTUATOR PILOT PRESSURE [bar]		DIFFERENTIAL PRESSURE [bar]		MAX ALLOWABLE PRESSURE [bar]	CODE	DRAWING REFERENCE
ISO 228/1	Ø [mm]	[l/min]	Ø [mm]	MIN	MAX	MIN	MAX	PS	STAINLESS STEEL	
G1/2	15	80	70	4	10	0	16	40	21A4T15GC2	1
G3/4	20	150	70	4	10	0	10	40	21A5T20GC2	1
G1	25	190	70	4	10	0	10	40	21A6T25GC2	1
G1 1/4	32	340	70	4	10	0	7	25	21A7T32GC2	1
G1 1/2	40	430	70	4	10	0	4,5	25	21A8T40GC2	1
G2	50	620	70	4	10	0	3	16	21A9T50GC2	1

2/2 NC HIGH PRESSURE

PIPE	ORIFICE SIZE	Kv	ACTUATOR	ACTUATOR PILOT PRESSURE [bar]		DIFFERENTIAL PRESSURE [bar]		MAX ALLOWABLE PRESSURE [bar]	CODE	DRAWING REFERENCE
ISO 228/1	Ø [mm]	[l/min]	Ø [mm]	MIN	MAX	MIN	MAX	PS	STAINLESS STEEL	
G1/2	15	80	70	4	10	0	35	40	21A4T15GC2-H	1
G3/4	20	150	70	4	10	0	25	40	21A5T20GC2-H	1
G1	25	190	70	4	10	0	20	40	21A6T25GC2-H	1
G1 1/4	32	340	70	4	10	0	13	25	21A7T32GC2-H	1
G1 1/2	40	430	70	4	10	0	8	25	21A8T40GC2-H	1
G2	50	620	70	4	10	0	5,5	16	21A9T50GC2-H	1

2/2 NO

PIPE	ORIFICE SIZE	Kv	ACTUATOR	ACTUATOR PILOT PRESSURE [bar]		DIFFERENTIAL PRESSURE [bar]		MAX ALLOWABLE PRESSURE [bar]	CODE	DRAWING REFERENCE
ISO 228/1	Ø [mm]	[l/min]	Ø [mm]	MIN	MAX	MIN	MAX	PS	STAINLESS STEEL	
G1/2	15	80	70	1,5	10	0		40	21A4T15GA2	1
G3/4	20	150	70	1,5	10	0		40	21A5T20GA2	1
G1	25	190	70	1,5	10	0		40	21A6T25GA2	1
G1 1/4	32	340	70	1,5	10	0		25	21A7T32GA2	1
G1 1/2	40	430	70	1,5	10	0		25	21A8T40GA2	1
G2	50	620	70	1,5	10	0		16	21A9T50GA2	1

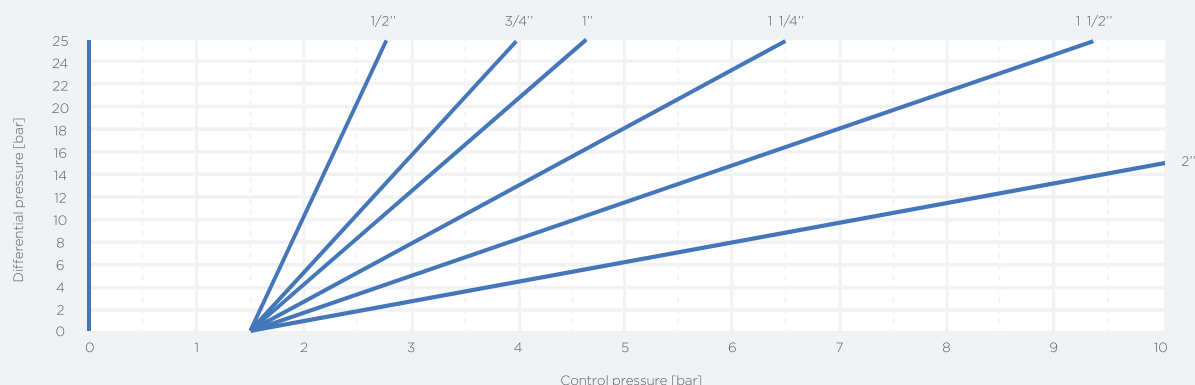
SEE
PRESSURE
GRAPH

2/2 DOUBLE ACTING

PIPE	ORIFICE SIZE	Kv	ACTUATOR	ACTUATOR PILOT PRESSURE [bar]		DIFFERENTIAL PRESSURE [bar]		MAX ALLOWABLE PRESSURE [bar]	CODE	DRAWING REFERENCE
ISO 228/1	Ø [mm]	[l/min]	Ø [mm]	MIN	MAX	MIN	MAX	PS	STAINLESS STEEL	
G1/2	15	80	70	5	10	0	35	40	21A4T15GD2	1
G3/4	20	150	70	5	10	0	25	40	21A5T20GD2	1
G1	25	190	70	5	10	0	20	40	21A6T25GD2	1
G1 1/4	32	340	70	5	10	0	13	25	21A7T32GD2	1
G1 1/2	40	430	70	5	10	0	8	25	21A8T40GD2	1
G2	50	620	70	5	10	0	5,5	16	21A9T50GD2	1

2/2 NC WITH STAINLESS STEEL ACTUATOR

PIPE	ORIFICE SIZE	Kv	ACTUATOR	ACTUATOR PILOT PRESSURE [bar]		DIFFERENTIAL PRESSURE [bar]		MAX ALLOWABLE PRESSURE [bar]	CODE	DRAWING REFERENCE
ISO 228/1	Ø [mm]	[l/min]	Ø [mm]	MIN	MAX	MIN	MAX	PS	STAINLESS STEEL	
G1/2	15	80	50	5	8	0	25	40	21A4T15GC1-5	2
G3/4	20	150	50	5	8	0	15	40	21A5T20GC1-5	2
G1	25	190	50	5	8	0	10	40	21A6T25GC1-5	2



I	II	III	IV	V	VI	VII	VIII	IX	X
2	1	IA	4	T	15	G	C	2	-

CODIFICATION

I. NUMBER OF WAYS

2 - 2-way

II. NUMBER OF ELEMENTS

1 - 1 element

III. SERIES

IA

IV. PIPE

4 - 1/2"
5 - 3/4"
6 - 1"
7 - 1 1/4"
8 - 1 1/2"
9 - 2"

V. SEALING MATERIAL

T - PTFE

VI. NOMINAL DIAMETER

15 - DN15
20 - DN20
25 - DN25
32 - DN32
40 - DN40
50 - DN50

VII. THREAD TYPE

G - ISO 228/1

VIII. PILOT FUNCTION

C - Normally Closed
A - Normally Open
D - Double Effect

IX. PILOT THREAD SIZE

1 - G1/8
2 - G1/4

X. OPTIONS

5 - Stainless steel actuator
H - High pressure version
IP1 - Position indicator
A - ATEX version
HA - High pressure ATEX version
5A - ATEX Version with StSt Actuator

OPTION	VALVE TYPE	VALVE SIZE/CONNECTIONS						NOTES
		G1/2	G3/4	G1	G1 1/4	G1 1/2	G2	
5	2/2 NC	X	X	X				
H	2/2 NC	X	X	X	X	X	X	
IP1	2/2 NC, NO	X	X	X	X	X	X	
A	2/2 NC, NO	X	X	X	X	X	X	REF. 2/2 NC, NO TABLES
HA	2/2 NC	X	X	X	X	X	X	REF. TO -H VERS TABLE
5A	2/2 NC	X	X	X				

OPTIONS
AVAILABILITY**According to Directive 2014/34/EU ATEX**

II 2G Ex h IIC T6 o TX Gb
(-40°C ≤ Tamb ≤ 80°C)

for actuator Ø70mm

**According to Directive 2014/34/EU ATEX**

II 2G Ex h IIC T6...T3 Gb
II 2D Ex h IIC T80°C...T180°C Db
(-40 °C ≤ Tamb ≤ 80°C)

for actuator Ø50mm