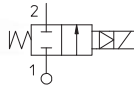


HIGH PRESSURE SERIES

General Purpose, 2-way, Indirect Acting

2-way, piston operated, solenoid valves for control of air, inert gas, water and other fluids compatible with the seal materials. Due to the robust piston design, the valves can handle high operating pressure with large orifices. A minimum operating pressure is required.



TECHNICAL DATA

PORT CONNECTION	G3/8	G1/2
SEALING MATERIALS	PTFE	Fiberglass reinforced PBT
FLUID TEMPERATURE	-40°C +98°C	-20°C +95°C
FLUIDS	air, water	air, water
VISCOSITY	max. 12 cSt	
COILS POWER RANGE - WIDTH	ø 13 mm - 30 mm	BDA08, BVA08 (class F), BDV08 (class H)
	ø 13 mm - 36 mm	UDV16 (class H)
	ø 13 mm - 52 mm	GDV14 (class H)
INSTALLATION	as required, preferably with actuator upright	
PROTECTION DEGREE	IP65 EN 60529 (DIN 40050) with plug connector	

■ MOPD values are referred to "standard power" coil range. Please refer to coil chapter.

MATERIALS

BODY	Brass UNI EN 12165 CW617N
ORIFICE	Stainless steel AISI Series 300 for G3/8 Brass UNI EN 12165 CW617N for G1/2
ARMATURE TUBE	Stainless steel AISI Series 300
FIXED CORE	Stainless steel AISI Series 400
PLUNGER	Stainless steel AISI Series 400
PHASE DISPLACEMENT RING	Copper (Cu 99,9%)
SPRING	Stainless steel AISI Series 300
SEALING	T=PTFE for G3/8 Q=PBT for G1/2

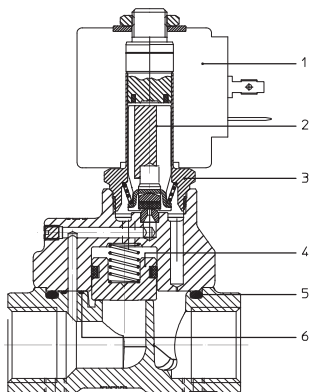
■ **CE**
- 2014/35/EU (LVD)
- 2014/30/EU (EMC)
- 2014/68/EU (PED),
art. 4.3 up to 1"

■ **UL** recognized and **VDE**
approved coils are available
for this series, please refer
to coil section.

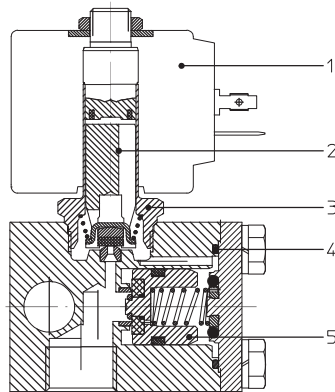
■ **EXPLOSION PROOF COILS**
suitable for zone 2-22 are available
for this series. Please refer to ATEX
coil section for further details.

■ The fluids listed in the "technical data" tables should be considered as a recommendation.
Please check the chemical compatibility of the fluids with the materials of the valve at RFQ stage.
■ For spare parts list, please refer to the dedicated chapter.

NC, G1/2

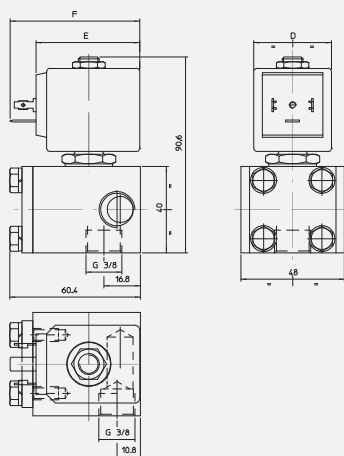


NC, G3/8



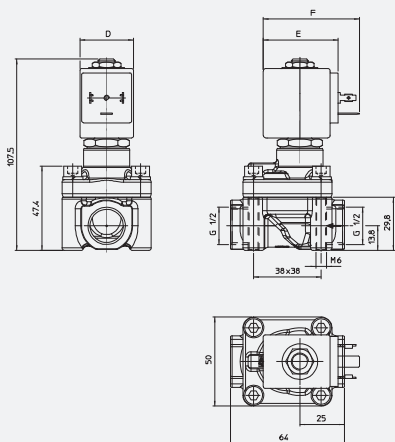
Solenoid Valves ■ General purpose ■ 2-way ■ Indirect Acting ■ **HIGH PRESSURE SERIES**

DRAWING 1



COIL SERIES	DIMENSIONS [mm]		
	D	E	F
B**08	30	42	54
UDV16	36	48	60
GDV14	52	55	67

DRAWING 2



2/2 NC

PIPE ISO 228/1	ORIFICE SIZE Ø [mm]	Kv [l/min]	COIL SERIES	PRESSURE [bar]			CODE		DRAWING REFERENCE	
				MIN	MOPD		PS	BRASS		STAINLESS STEEL
					AC	DC				
G3/8	2.5	14	B**08	0,7	90*	40	150	4731K0T70	-	1
			UDV16	0,7	100*	90	150	4731K0T70	-	1
			GDV14	0,7	100*	100	150	4731K0T70	-	1
G1/2	12	60	B**08	3	100	90	100	4966K0Q120	-	2
			UDV16	3	100	100	100	4966K0Q120	-	2

■ MOPD values valid only for mono-frequency coil.

2/2 NO

PIPE ISO 228/1	ORIFICE SIZE Ø [mm]	Kv [L/MIN]	COIL SERIES	PRESSURE [bar]			CODE		DRAWING REFERENCE	
				MIN	MOPD		PS	BRASS		STAINLESS STEEL
					AC	DC				
G1/2	12	60	B**08	3	50	50	80	4966Z0Q120D	-	2
			UDV16	3	50	50	80	4966Z0Q120D	-	2

CODIFICATION

I	II	III	IV	V	VI
4966	K	O	Q	120	D

I. SERIES

4731 - High pressure valve, G3/8
4966 - High pressure valve, G1/2

II. CORE TUBE TYPE

K - for 2/2 NC valves
Z - for 2/2 NO valves (G1/2 only)

III. PHASE DISP. RING MATERIAL

O - copper

IV. SEALING MATERIAL

Q - PBT (G1/2 only)
T - PTFE (G3/8 only)

V. ORIFICE Ø [mm] MULTIPLIED BY 10**VI. COIL IDENTIFICATION**

Blank - std. for NC
D - for NO

