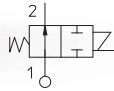


21MO - 4144 - 5315 SERIES

General Purpose, 2-way, Direct Acting

21MO are normally open, direct acting solenoid valves. The inline construction of inlet and outlet port ensure maximum compactness.



TECHNICAL DATA

PORT CONNECTION	G1/8 to G1/4	
SEALING MATERIALS	NBR	FKM
FLUID TEMPERATURE	-10°C +90°C	-10°C +140°C
FLUIDS	Air, inert gas, water	oils, gasoline, diesel
VISCOSITY	12 cSt up to orifice 1.5 mm, 37 cSt for orifice 2.0 mm, 53 cSt for orifice 2.5 mm and above	
TUBE Ø - COIL WIDTH - SERIES	ø 10 mm - 22 mm	LBA05, LTA05 (class F), LBV05 (class H)
	ø 13 mm - 30 mm	BDA08, BVA08 (CLASS F), BDV08 (CLASS H)
INSTALLATION	as required, preferably with actuator upright	
PROTECTION DEGREE	IP65 EN 60529 (DIN 40050) with plug connector	

■ MOPD values are referred to "standard power" coil range. Please refer to coil chapter.

MATERIALS

BODY, ORIFICE	Brass UNI EN 12165 CW617N
ARMATURE TUBE	Stainless steel AISI Series 300
FIXED CORE	Stainless steel AISI Series 400
PLUNGER	Stainless steel AISI Series 400
PHASE DISPLACEMENT RING	Copper (Cu 99,9%) or gold plated copper
SPRING	Stainless steel AISI Series 300
SEALING	B=NBR, V=FKM

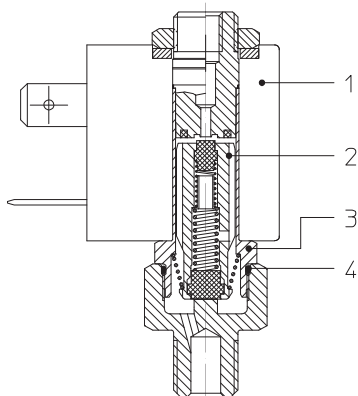
■ **CE**
- 2014/35/EU (LVD)
- 2014/30/EU (EMC)
- 2014/68/EU (PED)
art. 4.3 up to 1"

■ **UL** recognized and **VDE** approved coils are available for this series, please refer to coil section.

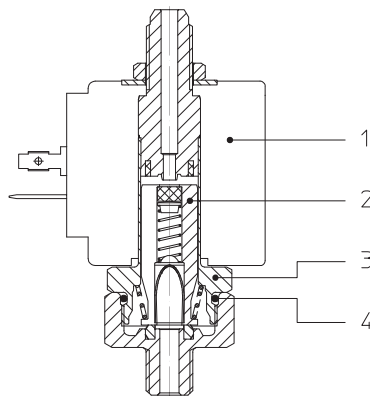
■ **EXPLOSION PROOF COILS** suitable for zone 2-22 are available for this series. Please refer to ATEX coil section for further details.

■ The fluids listed in the "technical data" tables should be considered as a recommendation. Please check the chemical compatibility of the fluids with the materials of the valve at RFQ stage.
■ For spare parts list, please refer to the dedicated chapter.

NO, 22 mm COIL

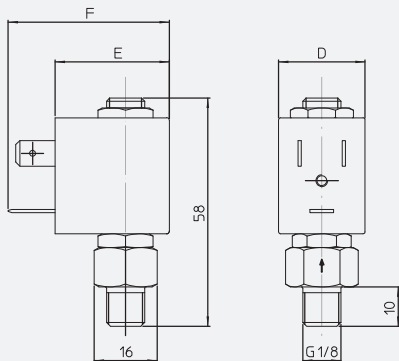


NO, 30 mm COIL

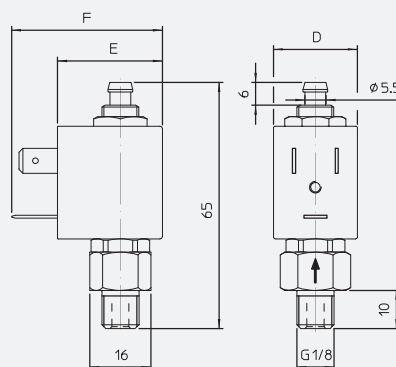


Solenoid Valves ■ General purpose ■ 2-way ■ Direct Acting ■ 21MO - 4144 - 5315 SERIES

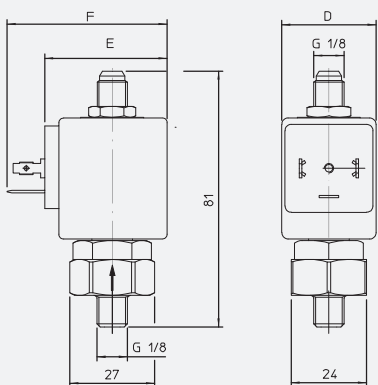
DRAWING 1



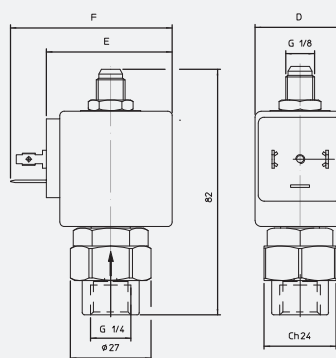
DRAWING 2



DRAWING 3



DRAWING 4



COIL SERIES	DIMENSIONS [mm]		
	D	E	F
L**05	22	28±1	39,5
B**08	30	42	54

2/2 NO

PIPE ISO 228/1	ORIFICE SIZE Ø [mm]	Kv [l/min]	COIL SERIES	PRESSURE [bar]						CODE		DRAWING REFERENCE
				MIN	MOPD (AIR, GASES)		MOPD (LIQUIDS)		PS	BRASS	STAINLESS STEEL	
					AC	DC	AC	DC				
G1/8	1,5	0,8	L**05	0	12	12	12	12	40	4144W0V15	-	1
	1,7	1,7	L**05	0	15	-	15	-	40	4144XPV17	-	2
	2,5	3,5	B**08	0	18	-	8	-	25	21M0AV25	-	3
				4	-	18	-	8	25	21M0AV25	-	3
G1/4	2,5	3,5	B**08	0	18	-	8	-	25	5315A0V25	-	4
				-	18	-	8	25	5315A0V25	-	4	

■ For sealing different from FKM replace the letter "V" with the ones corresponding to the other materials
 Series 21MO, series 5315 V=FKM, B=NBR
 Series 4144 V=FKM

CODIFICATION

I
21MOII
A

III

IV
VV
25**I. SERIES**

21MO - IN G1/8 (M), 30 mm coil
 4144 - IN G1/8 (M), 22 mm coil
 5315 - IN G1/4 (F), 30 mm coil

II. CORE TUBE TYPE

A - OUT G1/8 (M), 30 mm coil
 W - OUT M5 (F), 22 mm coil
 XP - OUT barbed port, 22 mm coil

III. PHASE DISP. RING MATERIAL

O or blank- copper

IV. SEALING MATERIAL

V - FKM
 B - NBR

V. ORIFICE Ø [mm] MULTIPLIED BY 10

