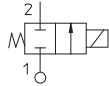


21TG SERIES

General Purpose, 2-way, Direct Acting

21TG are one-piece construction, direct acting solenoid valves. Body and armature tube are integrated in one single component. Valves do not require a minimum operating pressure.



TECHNICAL DATA

PORT CONNECTION	G1/8 to G1/4	
SEALING MATERIALS	NBR	FKM
FLUID TEMPERATURE	-10°C +90°C	-10°C +140°C
FLUIDS	Air, inert gas, water	oils, gasoline, diesel
VISCOSITY	37 cSt for orifice 1.7 and 2.2 mm, 53 cSt for orifice 2.8 mm and above	
TUBE Ø - COIL WIDTH - SERIES	ø13 mm - 30 mm	BDA08, BVA08 (CLASS F), BDV08 (CLASS H)
INSTALLATION	as required, preferably with actuator upright	
PROTECTION DEGREE	IP65 EN 60529 (DIN 40050) with plug connector	

■ MOPD values are referred to "standard power" coil range. Please refer to coil chapter.

MATERIALS

BODY, ARMATURE TUBE, ORIFICE	Brass UNI EN 12165 CW617N
ARMATURE TUBE O-RING	B=NBR, V=FKM
FIXED CORE	Stainless steel AISI Series 400
PLUNGER	Stainless steel AISI Series 400
PHASE DISPLACEMENT RING	Copper (Cu 99,9%) or gold plated copper
SPRING	Stainless steel AISI Series 300
SEALING	B=NBR, V=FKM

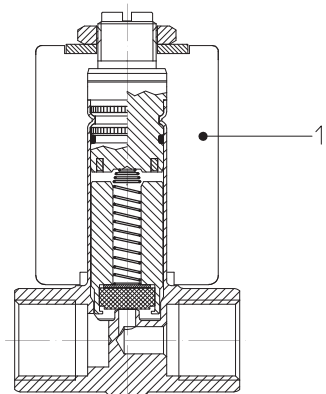
■ **CE**
- 2014/35/EU (LVD)
- 2014/30/EU (EMC)
- 2014/68/EU (PED)
art. 4.3 up to 1"

■ **UL** recognized and **VDE** approved coils are available for this series, please refer to coil section.

■ **EXPLOSION PROOF COILS** suitable for zone 2-22 are available for this series. Please refer to ATEX coil section for further details.

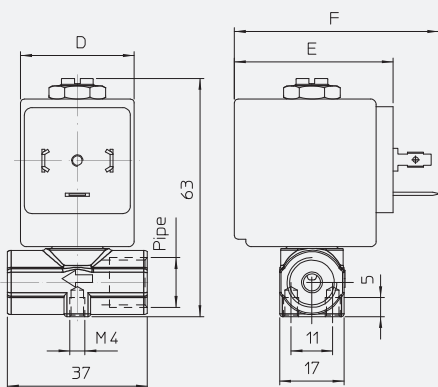
■ The fluids listed in the "technical data" tables should be considered as a recommendation. Please check the chemical compatibility of the fluids with the materials of the valve at RFQ stage.
■ For spare parts list, please refer to the dedicated chapter.

NC, BRASS



Solenoid Valves ■ General purpose ■ 2-way ■ Direct Acting ■ 21TG

DRAWING 1



COIL SERIES	DIMENSIONS [mm]		
	D	E	F
B**08	30	42	54

PIPE ISO 228/1	ORIFICE SIZE Ø [mm]	Kv [l/min]	COIL SERIES	PRESSURE [bar]			CODE		DRAWING REFERENCE	
				MIN	MOPD		PS	BRASS		STAINLESS STEEL
					AC	DC				
G1/8	1,7	1,5	B**08	0	30	20	40	21TG1KROV17	-	1
	2,2	2,1	B**08	0	20	15	40	21TG1KROV22	-	1
	2,8	3,5	B**08	0	14	10	40	21TG1KROV28	-	1
	4,0	5,0	B**08	0	6	3	40	21TG1KROV40	-	1
G1/4	1,7	1,5	B**08	0	30	20	40	21TG2KROV17	-	1
	2,2	2,1	B**08	0	20	15	40	21TG2KROV22	-	1
	2,8	3,5	B**08	0	14	10	40	21TG2KROV28	-	1
	4,0	5,0	B**08	0	6	3	40	21TG2KROV40	-	1

■ For sealing different from FKM replace the letter "V" with the ones corresponding to the other materials
V=FKM, B = NBR

CODIFICATION

I	II	III	IV	V	VI	VII	VIII	IX	X
2	1	TG	2	KR	0	V	17	-	

I. NUMBER OF WAYS
2 - 2 - way

II. NUMBER OF ELEMENTS
1 - 1 element

III. SERIES
TG - 2/2 NC with integrated core tube

IV. CONNECTIONS
1 - G1/8
2 - G1/4

V. CORE TUBE TYPE
KR - for 2/2 NC valves, 8 W coil

VI. PHASE DISP. RING MATERIAL
0 or blank - copper

VII. SEALING MATERIAL
V - FKM
B - NBR

VIII. ORIFICE Ø [mm] MULTIPLIED BY 10

IX. OPTIONS
XF - integrated filter on inlet port

OPTIONS
AVAILABILITY

OPTION	VALVE TYPE	BODY MATERIAL	SEALING MATERIAL	VALVE SIZE/CONNECTIONS		NOTES
				G1/8	G1/4	
XF	2/2 NC	Brass	B, V	X		Non removable filter, StSt material

■ Please contact ODE if you wish to combine more options.

