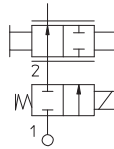
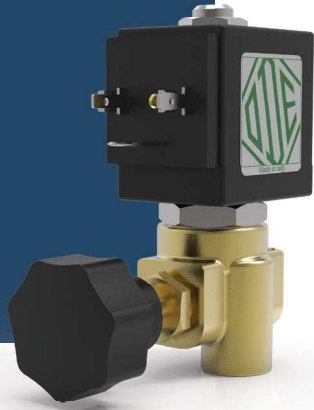


21A16 SERIES

General Purpose, 2-way, Direct Acting

21A16 are direct acting solenoid valves. The fixed core and armature tube are welded together to enhance pressure resistance and leak-tightness. Valves do not require a minimum operating pressure. These valves are provided with an integrated manual flow regulator on the outlet port.



TECHNICAL DATA

PORT CONNECTION	G 1/4			
SEALING MATERIALS	soft		hard	
	FKM	EPDM	PTFE	RUBY
FLUID TEMPERATURE	-10°C +140°C	-10°C +140°C	-40°C +180°C	-40°C +180°C
FLUIDS	oils, gasoline, diesel	water, low pressure steam	water, steam	water, steam
VISCOSITY	53 cSt for orifice 2.5 mm and above			
TUBE Ø - COIL WIDTH - SERIES	ø 13 mm - 30 mm		BDA08, BVA08 (CLASS F), BDV08 (CLASS H)	
INSTALLATION	as required, preferably with actuator upright			
PROTECTION DEGREE	IP65 EN 60529 (DIN 40050) with plug connector			

■ MOPD values are referred to "standard power" coil range. Please refer to coil chapter.

MATERIALS

BODY	Brass UNI EN 12165 CW617N
ORIFICE	Stainless steel AISI Series 300
ARMATURE TUBE	Stainless steel AISI Series 300
FIXED CORE	Stainless steel AISI Series 400
PLUNGER	Stainless steel AISI Series 400
PHASE DISPLACEMENT RING	Copper (Cu 99,9%) or gold plated copper
SPRING	Stainless steel AISI Series 300
SEALING	V=FKM, E=EPDM, T=PTFE, R=RUBY

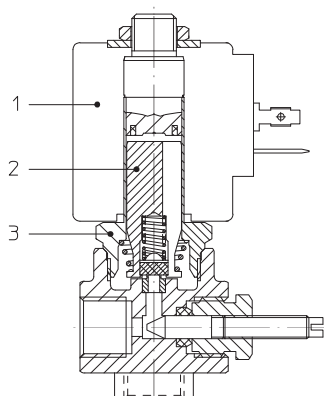
■ **CE**
- 2014/35/EU (LVD)
- 2014/30/EU (EMC)
- 2014/68/EU (PED)
art. 4.3 up to 1"

■ **UL** recognized and **VDE** approved coils are available for this series, please refer to coil section.

■ **EXPLOSION PROOF COILS** suitable for zone 2-22 are available for this series. Please refer to ATEX coil section for further details.

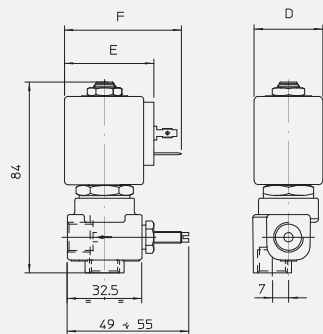
■ The fluids listed in the "technical data" tables should be considered as a recommendation. Please check the chemical compatibility of the fluids with the materials of the valve at RFQ stage.
■ For spare parts list, please refer to the dedicated chapter.

NC, BRASS



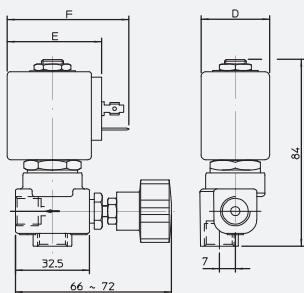
Solenoid Valves ■ General purpose ■ 2-way ■ Direct Acting ■ 21A16

DRAWING 1



PIPE	DIMENSIONS [mm]		
ISO 228/1	D	E	F
G1/4	30	42	54

KNOB OPTION



2/2 NC
SOFT SEALING

PIPE ISO 228/1	ORIFICE SIZE Ø [mm]	Kv [l/min]	COIL SERIES	PRESSURE [bar]				CODE		DRAWING REFERENCE
				MIN	MOPD		PS	BRASS	STAINLESS STEEL	
					AC	DC				
G1/4	2,5	3,2	B**08	0	14	9	25	21A16KE25	-	1
	3	4	B**08	0	10	6	25	21A16KE30	-	1

■ For sealing different from EPDM replace the letter "E" with the ones corresponding to the other materials
E=EPDM, V=FKM

2/2 NC
HARD SEALING

PIPE ISO 228/1	ORIFICE SIZE Ø [mm]	Kv [l/min]	COIL SERIES	PRESSURE [bar]				CODE		DRAWING REFERENCE
				MIN	MOPD		PS	BRASS	STAINLESS STEEL	
					AC	DC				
G1/4	2,5	3,2	B**08	0	14	5	25	21A16KT25	-	1
	3	4	B**08	0	10	4	25	21A16KT30	-	1

■ For sealing different from PTFE replace the letter "T" with the ones corresponding to the other materials
T=PTFE, R=RUBY

CODIFICATION

I	II	III	IV	V	VI	VII	VIII
2	1	A16	K		E	25	-

I. NUMBER OF WAYS
2 - 2 - way

II. NUMBER OF ELEMENTS
1 - 1 element

III. SERIES
A16 - brass body, Ø13 mm core tube
flowrate regulation, G1/4

IV. CORE TUBE TYPE
K - for 2/2 NC valves

V. PHASE DISP. RING MATERIAL
blank - copper
1 - gold plated copper

VI. SEALING MATERIAL
V - FKM
E - EPDM
T - PTFE
R - RUBY

VII. ORIFICE Ø [mm] MULTIPLIED BY 10
VIII. OPTIONS
XV - knob
XVN - knob and nickel plated body

OPTIONS
AVAILABILITY

OPTION	VALVE TYPE	BODY MATERIAL	SEALING MATERIAL	VALVE SIZE/CONNECTIONS	NOTES
				G1/4	
XV	2/2 NC	Brass	V, E, T, R	X	
XVN	2/2 NC	Brass	V, E, T	X	

■ Please contact ODE if you wish to combine more options.

