

QUICK COUPLING FOR COMPRESSED AIR

JAPAN SERIES

PLUS

**EASY CONNECTION
AND DISCONNECTION**

STRONG

**SUITABLE FOR PNEUMATIC
APPLICATIONS**





p. 446 / **8910FM**



p. 446 / **8920FF**



p. 446 / **8930RE**



p. 446 / **8960MM**



p. 447 / **8970FM**

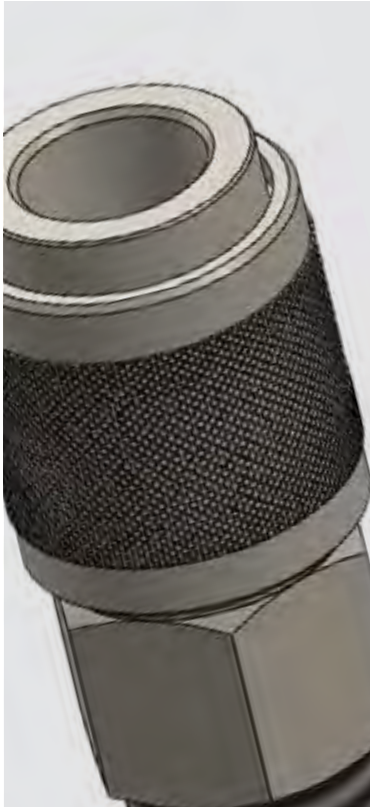


p. 447 / **8980RE**



p. 447 / **PCP**






 -15°C ÷ +80°C

 From 0 to 16 Bar

NOMINAL DIAMETER
7,5 mm

 Compressed air

 Parallel gas from G1/4" to G1/2"

PROFILE

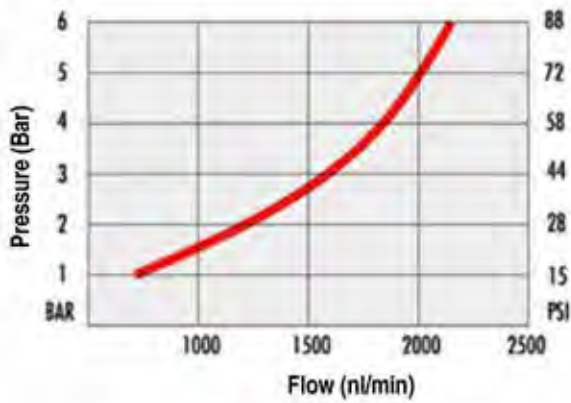


Products in compliance with the directive 2002/95/EC

RoHS2

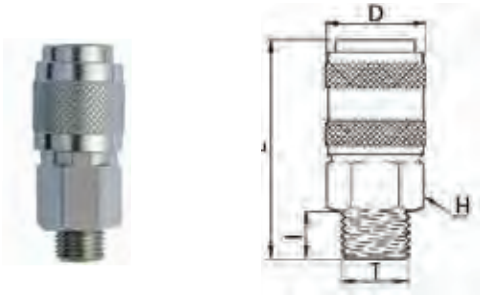
Products in compliance with the directive 2011/65/EU

TIERRE JAPAN SERIES



8910FM

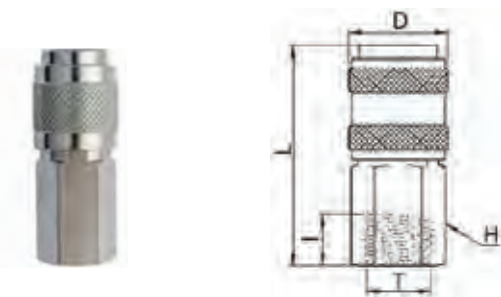
Male quick coupler



CODE	T	I	D	L	H
8910FM02	G1/4"	11,0	24,0	56,5	20
8910FM03	G3/8"	11,5	24,0	53,0	20
8910FM04	G1/2"	14,0	24,0	55,0	22

8920FF

Female quick coupler



CODE	T	I	D	L	H
8920FF02	G1/4"	11,0	24,0	54,0	20
8920FF03	G3/8"	12,0	24,0	54,0	20

8930RE

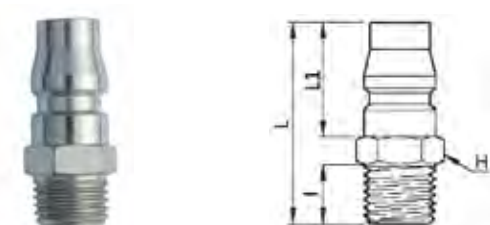
Hose connector quick coupler



CODE	Ø	D	L1	L	H
8930RE06	6	24,0	20,0	65,5	20
8930RE08	8	24,0	20,0	65,5	20
8930RE10	10	24,0	20,0	65,5	20

8960MM

Male connection

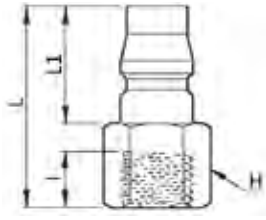


CODE	T	I	L	L1	H
8960MM02	G1/4"	11,0	37,0	21,0	14
8960MM03	G3/8"	11,5	37,5	21,0	17
8960MM04	G1/2"	14,0	40,5	21,0	22



8970FM

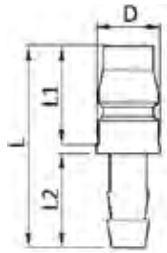
Female connection



CODE	T	I	L	L1	H
8970FM02	G1/4"	12,0	36,0	21,0	17
8970FM03	G3/8"	13,0	37,0	21,0	19

8980RE

Connector with barb connector



CODE	Ø	D	L	L1	L2
8980RE06	6	20,0	43,0	14,0	21,0
8980RE08	8	20,0	43,0	14,0	21,0
8980RE10	10	20,0	43,0	14,0	21,0

PCP

Push-in fittings for tube



CODE	ØD	ØP	ØA	L	E	B	DN	GR.
PCP04N	4	10,0	10,9	31,0	16,3	14,8	3,0	17,0
PCP06N	6	11,9	10,9	31,7	16,3	17,4	5,0	16,0
PCP08N	8	14,0	10,9	34,9	16,3	18,4	6,0	17,0
PCP10N	10	16,0	10,9	42,4	16,3	19,7	8,0	25,0
PCP12N	12	19,0	10,9	45,4	16,3	21,9	8,0	33,0
PCP16N	16	24,0	10,9	49,3	16,3	24,5	8,0	52,0



