

**QUICK
COUPLING FOR
COMPRESSED
AIR**
ITALY SERIES

PLUS

**EASY CONNECTION
AND DISCONNECTION**

STRONG

**SUITABLE FOR PNEUMATIC
APPLICATIONS**





p. 435 / **8210FM**



p. 435 / **8220FF**



p. 436 / **8240PO**



p. 436 / **8250MO**



p. 436 / **8260MO**



p. 436 / **8270FM**



p. 437 / **8230PO**

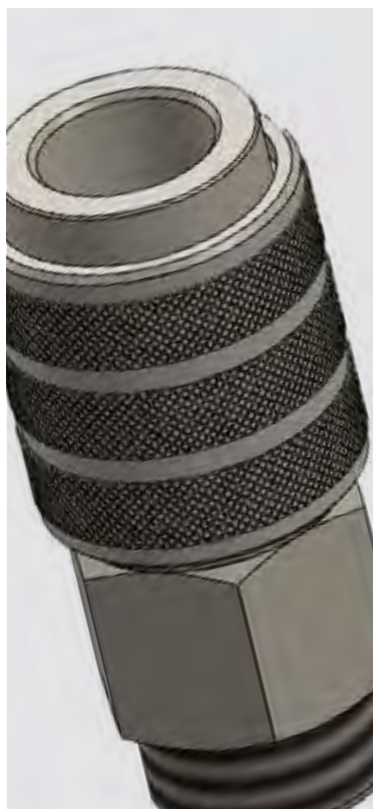


p. 437 / **8285BM**



p. 437 / **8295MO**





-15°C ÷ +80°C



Up to 8 Bar

NOMINAL DIAMETER

4,8 mm



Compressed air



Taper gas from R1/8" to R1/2"
Parallel gas from G1/8" to G1/2"

PROFILE



Products in compliance with
the directive 2002/95/EC

RoHS2

Products in compliance with
the directive 2011/65/EU

8210FM

Male quick coupler



CODE	T	L	H
8210FM01	R1/8"	51,9	19
8210FM02	R1/4"	52,1	19
8210FM03	R3/8"	52,2	19
8210FM04	R1/2"	55,5	22

8220FF

Male quick coupler



CODE	T	L	H
8220FF02	G1/4"	52,2	19
8220FF03	G3/8"	58,0	19
8220FF04	G1/2"	58,1	25



8240PO

Hose connector quick coupler



CODE	ØD	L	H1	H2
8240PO610	6X10	70,5	19	15
8240PO612	6X12	72,0	19	15
8240PO613	6X13	70,5	19	16
8240PO614	6X14	70,5	19	17
8240PO716	7X16	73,2	19	19
8240PO812	8X12	70,5	19	15
8240PO813	8X13	70,5	19	15
8240PO815	8X15	70,5	19	15
8240PO817	8X17	71,1	19	20
8240PO1017	10X17	76,2	19	18
8240PO1019	10X19	77,8	19	20

8250MO

Quick coupler with spring



CODE	ØD	L	H1	H2
8250MO46	4X6	131,1	19	12
8250MO58	5X8	140,5	19	13
8250MO68	6X8	138,7	19	12
8250MO6510	6,5X10	140,0	19	15
8250MO810	8X10	144,3	19	15
8250MO1012	10X12	148,7	19	17

8260MM

Male connection



CODE	T	L	H
8260MM01	R1/8"	34,7	13
8260MM02	R1/4"	37,9	14
8260MM03	R3/8"	38,2	17
8260MM04	R1/2"	42,1	22

8270FM

Female connection



CODE	T	L	H
8270FM01	G1/8"	29,0	13
8270FM02	G1/4"	37,0	15
8270FM03	G3/8"	38,1	19
8270FM04	G1/2"	42,0	25



8230PO

Connection with hose connector



CODE	D	L	H1	H2
8230PO610	6X10	55,5	13	15
8230PO612	6X12	55,5	13	15
8230PO613	6X13	54,8	13	16
8230PO614	6X14	55,7	12	17
8230PO716	7X16	55,1	13	19
8230PO812	8X12	55,0	13	15
8230PO813	8X13	55,0	13	16
8230PO815	8X15	55,0	13	18
8230PO817	8X17	55,4	13	20
8230PO1017	10X17	57,9	13	20
8230PO1019	10X19	59,8	13	22

8285BM

Bayonet male connection



CODE	D	L	P
8285BM55	5,5	155,8	15

8295MO

Connection with spring



CODE	D	L	H1	H2
8295MO46	4X6	112,1	12	12
8295MO58	5X8	125,5	13	13
8295MO68	6X8	124,9	13	13
8295MO6510	6,5X10	126,0	12	15
8295MO810	8X10	123,7	13	15
8295MO812	8X12	125,5	15	17
8295MO1012	10X12	127,5	15	17



