

**QUICK
COUPLING FOR
COMPRESSED
AIR**
GERMANY SERIES

PLUS

**EASY CONNECTION
AND DISCONNECTION**

**SUITABLE FOR PNEUMATIC
APPLICATIONS**





p. 429 / **8310FM**



p. 429 / **8320FF**



p. 430 / **8330RE**



p. 430 / **8390PO**



p. 430 / **8350MO**



p. 430 / **8360MM**



p. 431 / **8370FM**



p. 431 / **8340PO**

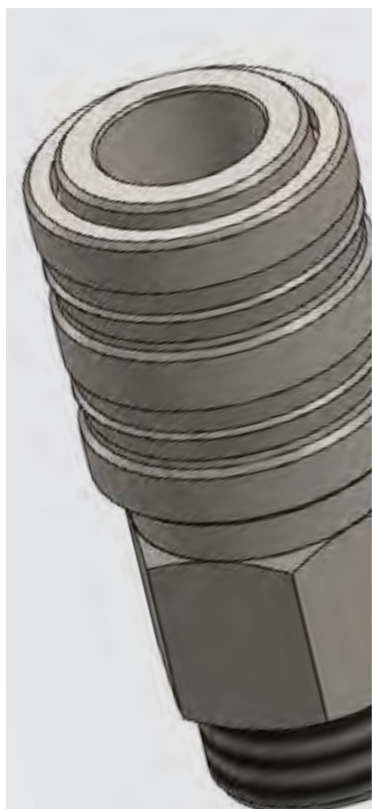


p. 431 / **8380RE**



p. 431 / **8395MO**





-15°C ÷ +80°C



Up to 8 Bar

NOMINAL DIAMETER

7,0 mm

FLOW

2000 l/min



Compressed air



Taper gas from R1/4" to R1/2"
Parallel gas from G1/4" to G1/2"

PROFILE



Products in compliance with
the directive 2002/95/EC

RoHS2

Products in compliance with
the directive 2011/65/EU

8310FM

Male quick coupler



CODE	T	L	H
8310FM02	R1/4"	51,5	19
8310FM03	R3/8"	51,5	19
8310FM04	R1/2"	54,5	22

8320FF

Female quick coupler



CODE	T	L	H
8320FF02	G1/4"	51,4	19
8320FF03	G3/8"	57,0	19
8320FF04	G1/2"	54,3	25



8330RE

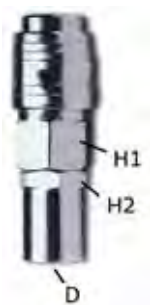
Barb connector quick coupler



CODE	D	L	H
8330RE06	6	38,5	19
8330RE07	7	61,5	19
8330RE08	8	63,1	19
8330RE09	9	63,3	19
8330RE10	10	65,7	19
8330RE12	12	66,7	19
8330RE13	13	66,3	19

8390PO

Hose connector quick coupler



CODE	D	L	H1	H2
8390PO610	6X10	72,5	19	15
8390PO612	6X12	72,5	19	15
8390PO614	6X14	73,2	19	20
8390PO812	8X12	70,0	19	15
8390PO817	8X17	70,3	19	20
8390PO1019	10X19	76,4	19	20

8350MO

Quick coupler with spring



CODE	D	L	H1	H2
8350MO46	4X6	129,0	19	12
8350MO58	5X8	139,0	19	13
8350MO68	6X8	137,0	19	13
8350MO6510	6,5X10	140,0	19	15
8350MO810	8X10	139,5	19	15
8350MO1012	10X12	144,7	19	17

8360MM

Male connection



CODE	T	L	H
8360MM02	R1/4"	33,5	14
8360MM03	R3/8"	35,5	17
8360MM04	R1/2"	38,4	22



8370FM

Female connection



CODE	T	L	H
8370FM02	G1/4"	33,1	15
8370FM03	G3/8"	35,0	19
8370FM04	G1/2"	38,0	25

8340PO

Connection with hose connector



CODE	D	L	H1	H2
8340PO1019	6X10	51,4	13	15
8340PO610	6X12	51,4	13	15
8340PO612	6X14	51,4	13	17
8340PO614	8X17	52,5	13	18
8340PO817	10X19	55,4	12	22

8380RE

Connection with barb connector



CODE	D	P
8380RE06	6	38,2
8380RE07	7	40,0
8380RE08	8	40,2
8380RE09	9	40,9
8380RE10	10	39,4
8380RE12	12	44,6
8380RE13	13	45,6

8395MO

Connection with barb connector



CODE	D	L	H1	H2
8395MO46	4X6	103,2	13	12
8395MO58	5X8	119,5	13	13
8395MO68	6X8	124,3	13	13
8395MO6510	6,5X10	120,5	13	15
8395MO810	8X10	123,2	13	15
8395MO1012	10X12	123,2	13	17



