

**QUICK
COUPLING FOR
COMPRESSED
AIR**
SWISS SERIES

PLUS

**EASY CONNECTION
AND DISCONNECTION**

**SUITABLE FOR PNEUMATIC
APPLICATIONS**





p. 425 / **8460MM**



p. 425 / **8470FM**



p. 426 / **8480RE**

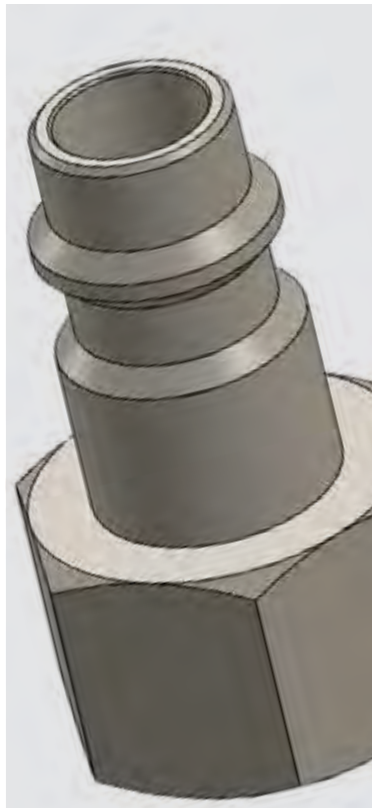


p. 426 / **8485PO**



p. 426 / **8490MO**





-15°C ÷ +80°C



Up to 16 Bar

NOMINAL DIAMETER

5,0 mm



Compressed air



Parallel gas BSPP ISO 228
from G 1/4" to G 1/2"

PROFILE



Products in compliance with
the directive 2002/95/EC

RoHS2

Products in compliance with
the directive 2011/65/EU

8460MM

Male connection



CODE	T
8460MM02	G1/4"
8460MM03	G3/8"
8460MM04	G1/2"

8470FM

Female connection



CODE	T
8470FM02	G1/4"
8470FM03	G3/8"
8470FM04	G1/2"



8480RE

Connection with barb connector



CODE	Ø
8480RE06	6
8480RE08	8
8480RE10	10
8480RE12	12

8485PO

Connection with hose connector



CODE	Ø
8485PO610	6X10
8485PO612	6X12
8485PO614	6X14
8485PO812	8X12
8485PO814	8X14
8485PO817	8X17
8485PO10145	10X14,5
8485PO1017	10X17
8485PO1019	10X19

8490MO

Connection with spring



CODE	Ø
8490MO46	4X6
8490MO58	5X8
8490MO68	6X8
8490MO810	8X10
8490MO6510	6,5X10
8490MO812	8X12
8490MO1012	10X12

