

**QUICK
COUPLING FOR
COMPRESSED
AIR**
USA SERIES

PLUS

**EASY CONNECTION
AND DISCONNECTION**

**SUITABLE FOR PNEUMATIC
APPLICATIONS**





p. 421 / **8060MM**



p. 421 / **8070FM**



p. 422 / **8080RE**

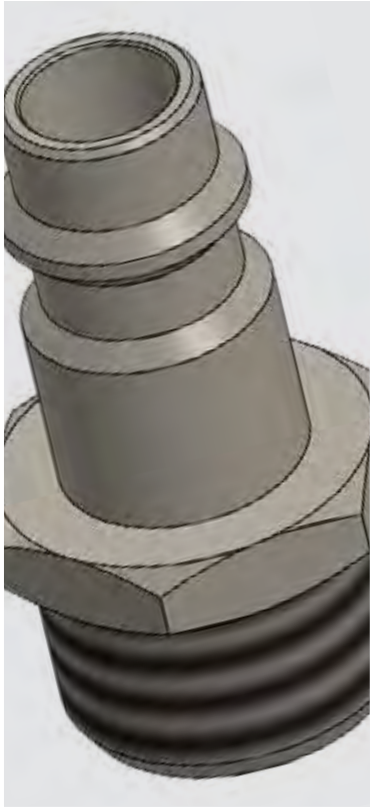


p. 422 / **8085PO**



p. 422 / **8090MO**





-15°C ÷ +80°C



Up to 16 Bar

NOMINAL DIAMETER
5,0 mm



Compressed air



Parallel gas BSPP ISO 228 from G1/8" to G1/2"

PROFILE



Products in compliance with the directive 2002/95/EC

RoHS2

Products in compliance with the directive 2011/65/EU

8060MM

Male connection



CODE	T
8060MM02	G1/4"
8060MM03	G3/8"
8060MM04	G1/2"

8070FM

Female connection



CODE	T
8070FM02	G1/4"
8070FM03	G3/8"
8070FM04	G1/2"



8080RE

Connection with barb connector



CODE	Ø
8080RE06	6
8080RE08	8
8080RE10	10
8080RE12	12

8085PO

Connection with hose connector



CODE	Ø
8085PO610	6X10
8085PO612	6X12
8085PO614	6X14
8085PO812	8X12
8085PO814	8X14
8085PO817	8X17
8085PO10145	10X14,5
8085PO1017	10X17
8085PO1019	10X19

8090MO

Connection with spring



CODE	Ø
8090MO46	4X6
8090MO58	5X8
8090MO68	6X8
8090MO810	8X10
8090MO6510	6,5X10
8090MO812	8X12
8090MO1012	10X12

