

BARB CONNECTORS

INOX AISI 316

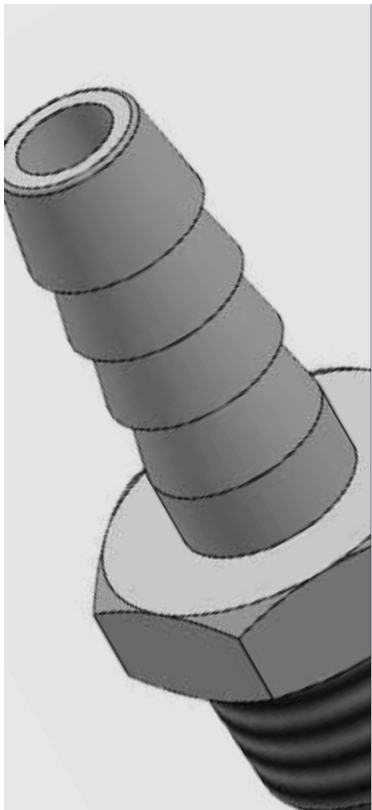
PLUS

**SUITABLE FOR FOOD & POTABLE WATER
CONTACT**

**ACCESSORIES FOR HIGHER GRIPPING
AND SAFETY AVAILABLE**



p. 286 / **1469**



-20°C ÷ +180°C



Up to 60 Bar



Compressed air, potable water, oil and food fluids suitable with construction materials



Taper gas BSPT ISO 7 from R1/8" to R3/4"



Polyurethane, Polyethylene, Polyamide, PTFE, FEP



Stainless steel INOX AISI 316L



Products in compliance with the directive 2002/95/EC

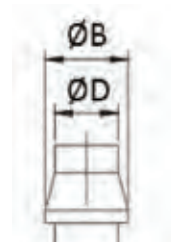
RoHS2

Products in compliance with the directive 2011/65/EU



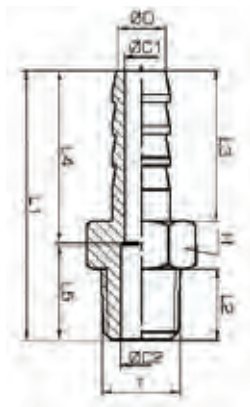
DIAMETER OF THE BARB

ØD	Ø 6 mm	Ø 8 mm	Ø 10 mm	Ø 14 mm	Ø 20 mm
ØB (mm)	7,2 mm	9,2 mm	11,2 mm	15,2 mm	21,0 mm



1469

Male barb connector BSPT thread Inox AISI 316



CODE	T	ØD	L1	L2	L3	L4	L5	ØC1	ØC2	H	GR.
1469TR186	R1/8"	6	34,0	9,0	19,0	21,7	12,0	4,0	5,0	12	13,0
1469TR148	R1/4"	8	35,5	10,5	19,0	21,1	14,0	5,5	7,0	14	18,0
1469TR3810	R3/8"	10	41,5	11,5	23,0	25,9	15,0	8,0	10,0	17	26,0
1469TR1214	R1/2"	14	51,0	15,0	28,0	32,4	18,0	11,0	13,0	22	54,0
1469TR3420	R3/4"	20	65,0	18,0	37,0	40,8	23,0	14,0	18,0	27	119,0

