

BARB CONNECTORS

HDPE

PLUS

**ACCESSORIES FOR HIGHER GRIPPING
AND SAFETY AVAILABLE**

HIGH DENSITY POLYETHYLENE





p. 259 / **5030PE**



p. 260 / **5040PE**

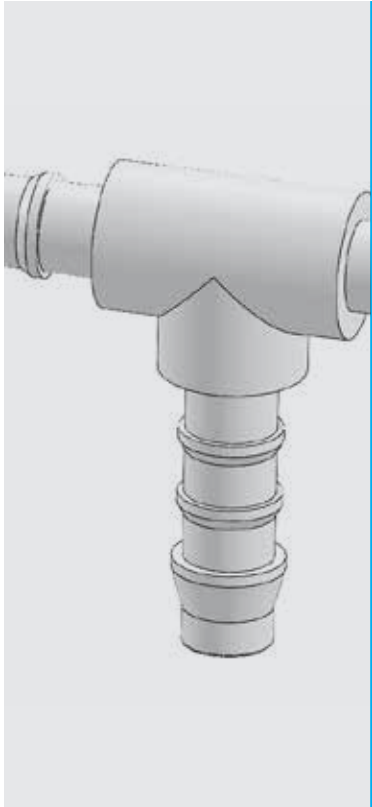


p. 260 / **5050PE**



p. 260 / **5060PE**





0°C ÷ +70°C
subject to application



up to 14 Bar at 20°C
depending from the used tube



Compressed air, water and fluids
suitable with construction materials



Polyurethane, silicon and soft PVC



High density polyethylene (HDPE)

FEATURES

Suitable for food.



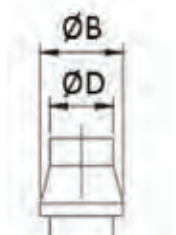
Products in compliance with
the directive 2002/95/EC

RoHS2

Products in compliance with
the directive 2011/65/EU

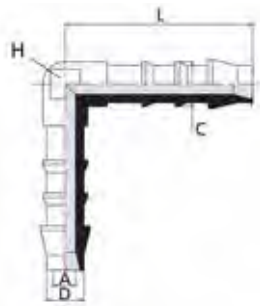
DIAMETER OF THE BARB

ØD	Ø 4 mm	Ø 6 mm	Ø 8 mm
ØB (mm)	5,2 mm	8,0 mm	10,0 mm



5030PE

Union elbow barb connector

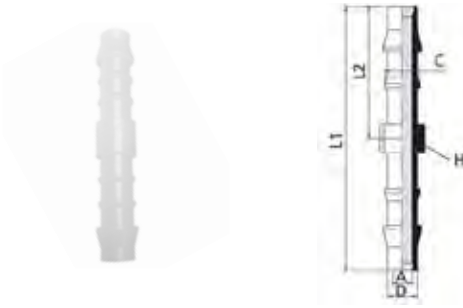


CODE	ØD	ØA	ØB	ØC	L	H	GR.
5030PE4	4 - 5/32"	2,8	5,2	4,8	22,0	6,3	0,5
5030PE6	6 - 1/4"	4,0	8,0	7,5	31,2	7,8	1,4
5030PE8	8 - 5/16"	5,7	10,0	9,2	36,0	10,3	2,4



5040PE

Union barb connector



CODE	ØD	ØA	ØB	ØC	L1	L2	H	GR.
5040PE4	4 - 5/32"	2,8	5,2	4,8	36	18	6,0	0,4
5040PE6	6 - 1/4"	4,0	8,0	7,5	53,6	26,8	6,0	1
5040PE8	8 - 5/16"	5,7	10,0	9,2	59,0	29,5	10,0	1,7

5050PE

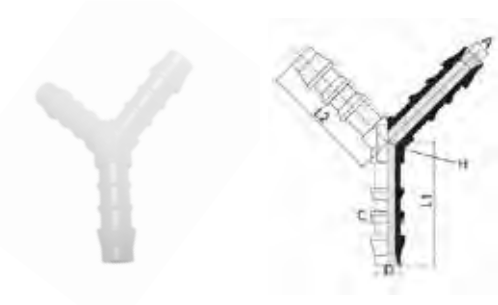
Union tee barb connector



CODE	ØD	ØA	ØB	ØC	L1	L2	H	GR.
5050PE4	4 - 5/32"	2,8	5,2	4,8	39,0	21,2	6,3	0,7
5050PE6	6 - 1/4"	4,0	8,0	7,5	56,4	31,0	7,8	1,8
5050PE8	8 - 5/16"	5,7	10,0	9,2	61,5	33,0	10,3	2,7

5060PE

Y barb connector



CODE	ØD	ØA	ØB	ØC	L1	L2	H	GR.
5060PE4	4 - 5/32"	2,8	5,2	4,8	20,0	20,0	6,3	0,6
5060PE6	6 - 1/4"	4,0	8,0	7,5	29,0	29,0	7,8	1,8
5060PE8	8 - 5/16"	5,7	10,0	9,2	31,2	31,2	10,3	2,7

