

PUSH-ON FITTINGS

ACETAL
RESIN

PLUS

**GREAT GRIPPING SYSTEM
WITH THE LOCKING NUT**

**STUDIED FOR COMPRESSED AIR AND
VACUUM**

**EASY TO BE USED AND EXTREMELY
STRONG**





p. 168 / **CK**

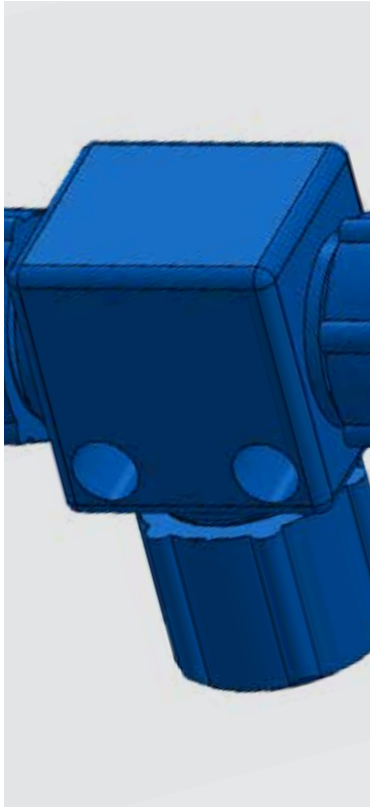


p. 168 / **GCK**



p. 168 / **FCK**





0°C ÷ 60°C



Working pressure: 10 Bar
Negative pressure: -750mmHg



Compressed air & vacuum



Taper gas BSPT ISO 7
 from R1/8" to R1/2"



Polyurethane



Acetal resin



Products in compliance with
 the directive 2002/95/EC

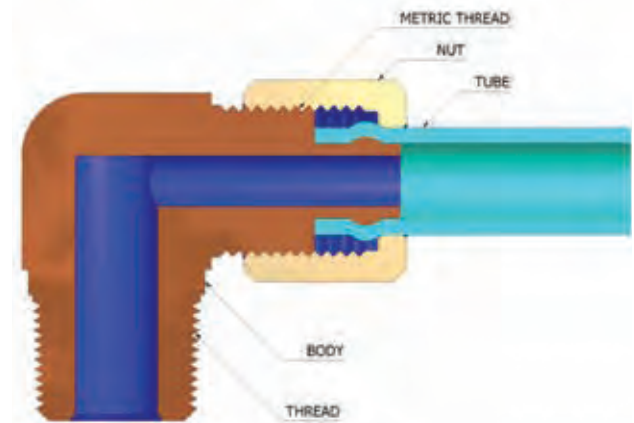
RoHS2

Products in compliance with
 the directive 2011/65/EU

PRECAUTIONS

- The products are made in plastic and it's necessary to use teflon coating over the thread for installation in order to prevent air leakage. Be sure to prevent excessive torque when screwing the fittings.
- To connect the tube, insert the tube to the end and tight the cap before use.
- Cut the pressed part of the tube before connection to reuse the released tube
- Do not use in water applications

CONSTRUCTION MATERIALS



PUES

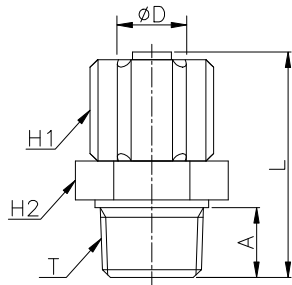


SIZE								
4X2,5	PUES0425AZ	PUES0425NE	PUES0425RO	PUES0425GL	PUES0425VD	PUES0425TR	PUES0425AZTR	PUES0425SL
6X4	PUES0604AZ	PUES0604NE	PUES0604RO	PUES0604GL	PUES0604VD	PUES0604TR	PUES0604AZTR	PUES0604SL
8X5,5	PUES0855AZ	PUES0855NE	PUES0855RO	PUES0855GL	PUES0855VD	PUES0855TR	PUES0855AZTR	PUES0855SL
10X6,5	PUES1065AZ	-	-	PUES1065GL	-	-	-	-
12X8	PUES1208AZ	PUES1208NE	-	PUES1208GL	-	-	-	-



CK

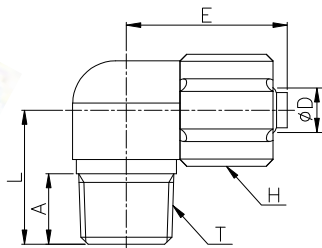
Male connector BSPT thread



CODE	ØD	T	L	A	H1	H2	GR.
CK04R01	4/2,5	R1/8"	24,5	8,0	10	12	2,0
CK06R01	6/4	R1/8"	28,5	7,0	12	13	3,0
CK06R02	6/4	R1/4"	30,5	9,0	12	15	4,0
CK08R01	8/5,5	R1/8"	30,0	9,0	14	14	5,0
CK08R02	8/5,5	R1/4"	29,0	9,0	14	17	5,0
CK08R03	8/5,5	R3/8"	31,7	10,2	14	19	6,0
CK10R02	10/6,5	R1/4"	33,4	9,2	17	17	7,0
CK10R03	10/6,5	R3/8"	34,9	10,2	17	19	7,0
CK12R02	12/8	R1/4"	39,0	9,2	19	17	9,0
CK12R03	12/8	R3/8"	41,2	10,2	19	19	9,0
CK12R04	12/8	R1/2"	45,0	15,0	19	22	13,0

GCK

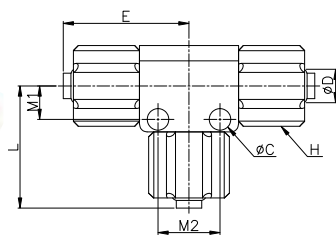
Male elbow BSPT thread



CODE	ØD	T	L	E	A	H	GR.
GCK04R01	4/2,5	R1/8"	16,5	16,0	8,0	12	3,0
GCK06R01	6/4	R1/8"	18,0	21,5	8,5	12	5,0
GCK06R02	6/4	R1/4"	18,7	23,5	9,0	12	7,0
GCK08R01	8/5,5	R1/8"	17,0	21,0	8,0	14	6,0
GCK08R02	8/5,5	R1/4"	19,0	22,5	10,0	14	8,0
GCK08R03	8/5,5	R3/8"	20,5	23,8	10,2	14	10,0
GCK10R02	10/6,5	R1/4"	22,0	24,1	12,0	17	10,0
GCK10R03	10/6,5	R3/8"	23,0	27,1	12,0	17	12,0
GCK12R02	12/8	R1/4"	23,0	32,2	11,0	19	14,0
GCK12R03	12/8	R3/8"	25,0	32,2	12,0	19	16,0
GCK12R04	12/8	R1/2"	28,0	34,0	15,0	19	19,0

FCK

Union Tee



CODE	ØD	L	E	ØC	M1	M2	H	GR.
FCK0400	4/2,5	19,0	18,0	2,5	5,7	9,5	10	4,0
FCK0600	6/4	24,3	24,2	4,3	5,7	11,2	12	11,0
FCK0800	8/5,5	24,1	24,8	4,3	6,6	12,2	14	14,0
FCK1000	10/6,5	30,0	27,0	4,3	8,3	13,4	17	24,0
FCK1200	12/8	36,9	34,0	4,3	9,3	13,7	19	26,0

