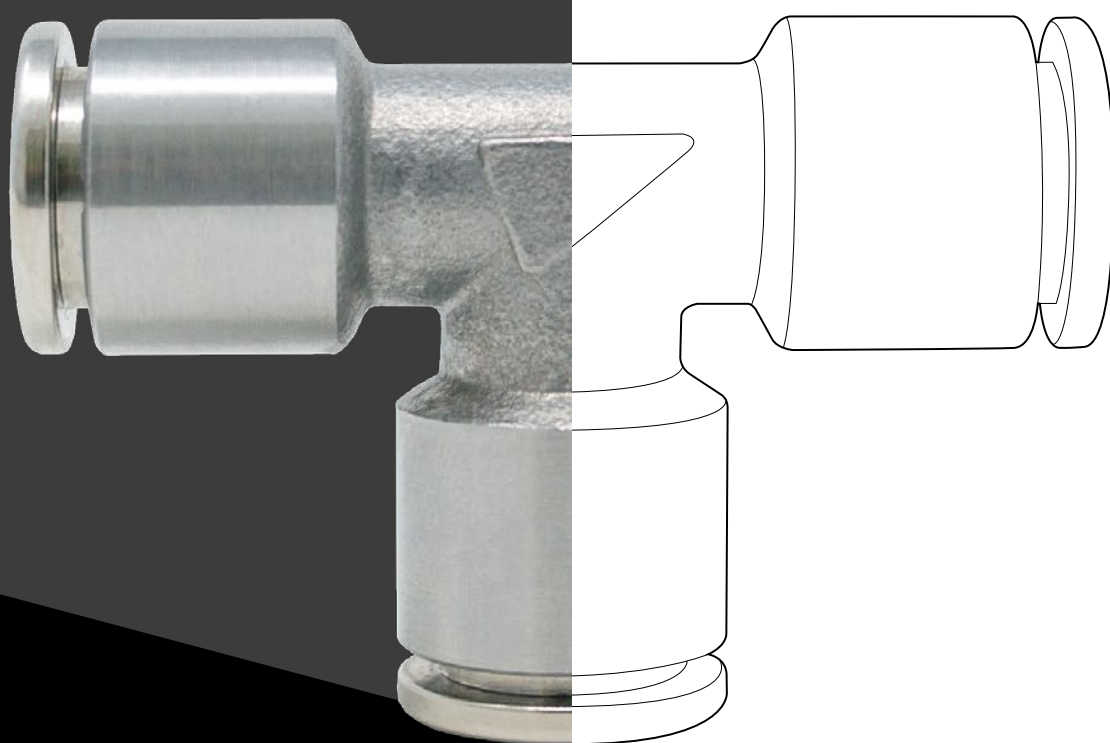


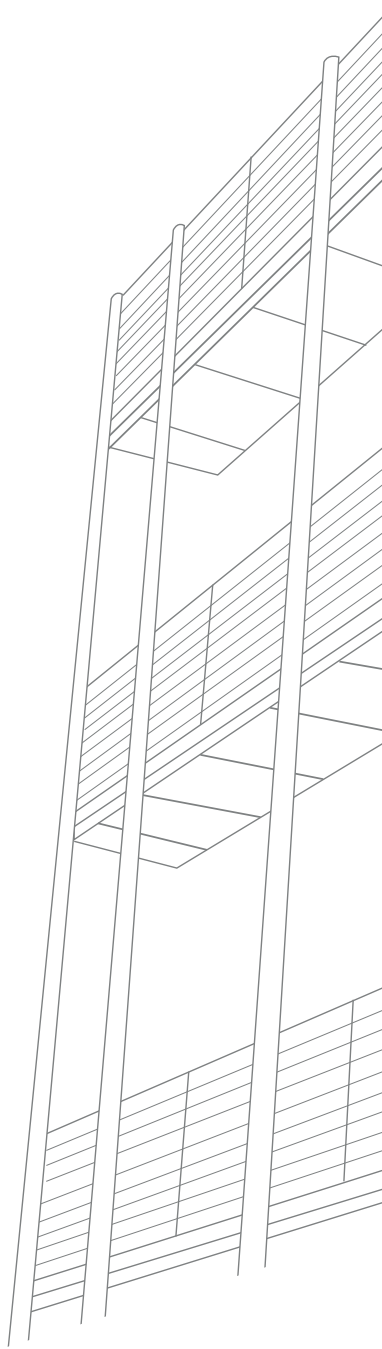
XVR SERIES INOX AISI 316L

 **TierreFittings**[®]



 **TierreGroup**[®]





 **TierreGroup**[®]
INDUSTRIAL AUTOMATION
HYGIENIC & FOOD FOOD & BEVERAGE

 **TierreFittings**[®]

 **F-Line.PRO**

 **NET.Fit**[®]

 **INOX.Fit**[®]



XVR SERIES INOX AISI 316L



PLUS

**SUITABLE TO BE USED IN
AGGRESSIVE ENVIRONMENTS,
EVEN WITH SALINE**

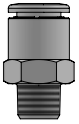
**CAN BE WASHED DOWN AND
SANITIZED WITH AGGRESSIVE
DETERGENTS**

RESISTANT TO WATER-HAMMER

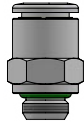
**SUITABLE FOR PERMANENT FOOD
CONTACT APPLICATIONS**

**DESIGN OPTIMISED TO MINIMIZE
RETENTION**





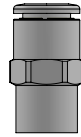
p. 8 / **XVRC-R**



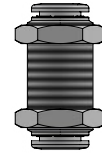
p. 8 / **XVRC-G**



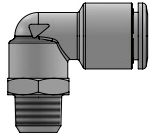
p. 8 / **XVROC-G**



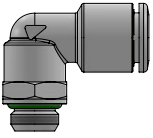
p. 9 / **XVRCF-G**



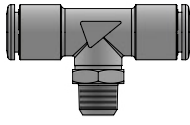
p. 9 / **XVRMM**



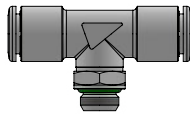
p. 9 / **XVRL-R**



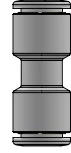
p. 10 / **XVRL-G**



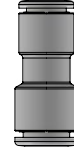
p. 10 / **XVRT-R**



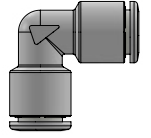
p. 10 / **XVRT-G**



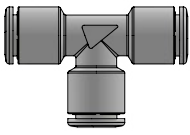
p. 11 / **XVRUC**



p. 11 / **XVRG**



p. 11 / **XVRUL**

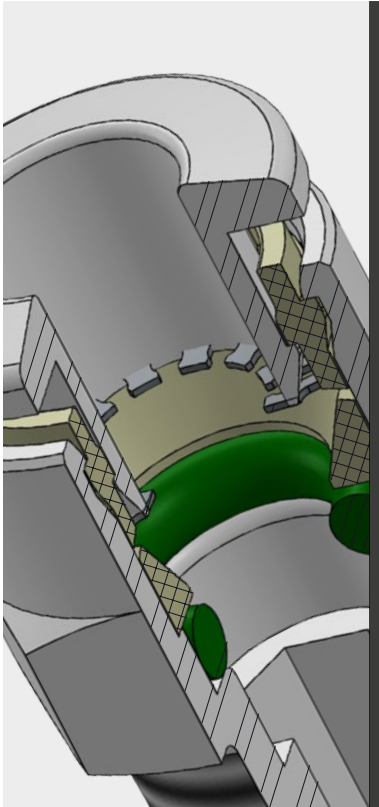



p. 12 / **XVRUT**





p. 12 / **XVRGJ**






 -20°C ÷ 150°C

 Max. working pressure:
20 Bar
Negative pressure:
- 0,95 Bar


 Compressed air, vacuum,
water and fluid suitable with
the construction materials

- Taper gas BSPT ISO 7
R1/8" - R1/4"

 - Parallel gas BSPP ISO 228
G1/8" - G1/2"

- Metric ISO 262
M5 - M7

Polyamide, Polyethylene, FEP,
PTFE and Inox tube with groove

 **TUBE TOLERANCE:**
See attached table at page 7

Body: Stainless steel AISI 316L
Collet: Stainless steel AISI 316L
Collar: PVDF-UHM FDA compliant
Lock claw: Stainless steel AISI 301
Back ring: PVDF-UHM FDA compliant
O'ring: FKM NSF/ANSI 61 certified
and FDA compliant
Retaining ring for swivel system:
Stainless steel AISI 302



Products in compliance with
the directive 1907/2006



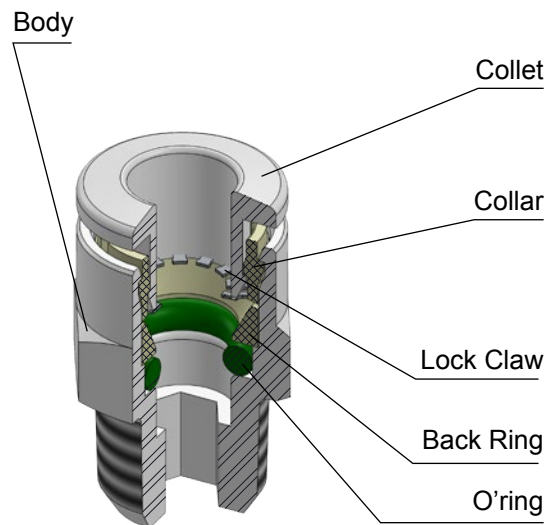
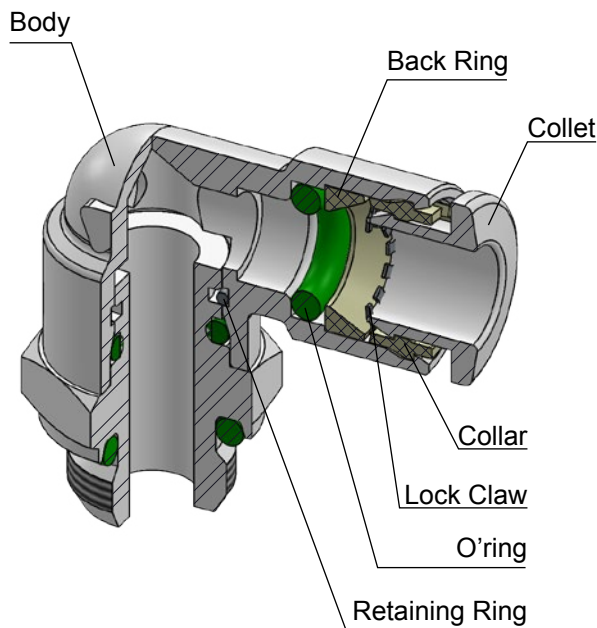
Products in compliance with
the directive EU 2015/863



NSF/ANSI 169



CONSTRUCTION DETAILS



TIGHTENING TORQUE
TAPER GAS BSPT ISO 7

THREAD	1/8"	1/4"
Nm	2,5	3,5

TIGHTENING TORQUE
PARALLEL GAS BSPP ISO 228 & METRIC ISO 262

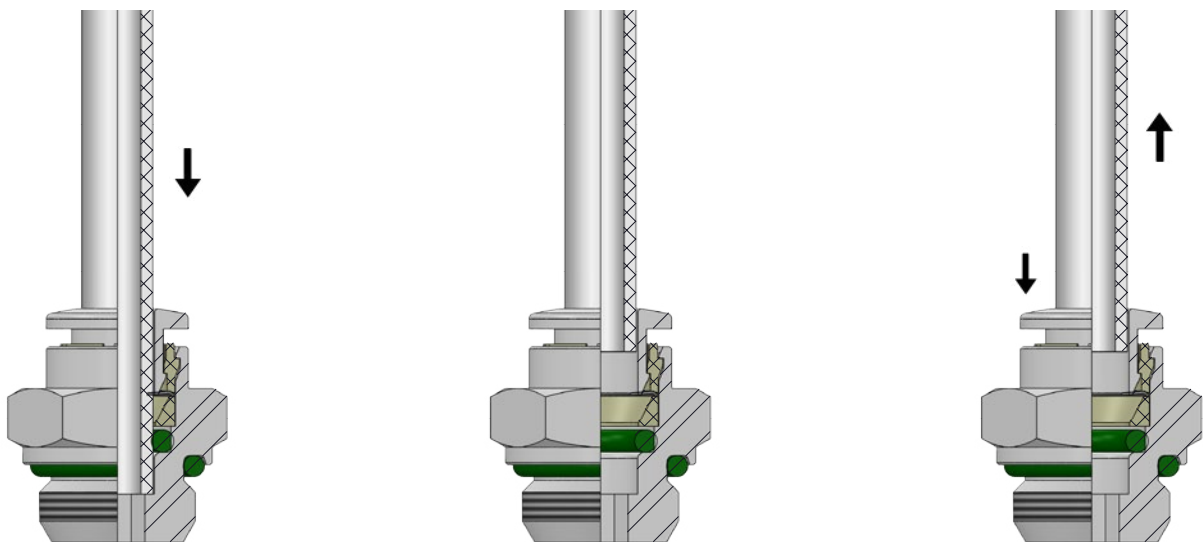
THREAD	M5x0,8	M7x1	1/8"	1/4"	3/8"	1/2"
Nm	0,8	0,8	1,2	1,5	2,5	3,5

INSERTION OF THE TUBE INTO THE FITTING

- Make sure the tube is fully inserted into the fitting.
- To insert the tube into the fitting cut the tube off square (90°), insert tube up to the fitting end stop, and pull back gently to make sure it is correctly connected.
- If there is any damage or scratches on the tube surface the tube is an oval shape, air leakage and tube release may occur. Check the tube condition carefully.
- The OD of polyurethane tube expands when pressure is applied. Reinsertion into the fitting may not always be possible. Check the OD of the tube and renew it the expansion is out of tolerance.

DISCONNECTION OF THE TUBE FROM THE FITTING

- Make sure the pressure in the system is zero before releasing the tube from the fitting.
- To release the tube, press the release sleeve towards the fitting with one hand and pull the tube away from the fitting with the other hand.
- Always remove the section of tube previously inserted into the fitting before reinserting the tube by cutting back the tube. Always use the correct tube cutter in order to cut the tube square and free of damage.



TUBE TOLERANCES

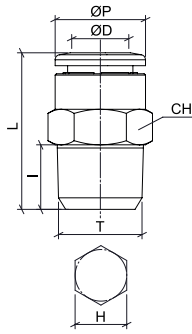
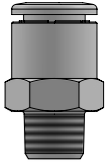
Ø TUBE (mm)	4	6	8	10	12
TOLERANCE (mm)	± 0,1	± 0,1	± 0,1	± 0,15	± 0,15

TUBE INSERTION DEPTH

Ø TUBE (mm)	4	6	8	10	12
TUBE INSERTION LENGTH (mm)	14	15,5	17,5	19	21



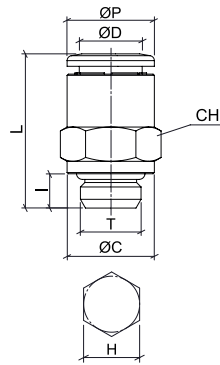
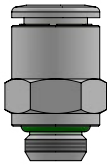
XVRC-R



Male connector BSPT thread stainless steel AISI 316L

CODE	ØD	T	ØP	I	L	CH	H
XVRC04R01	4	R 1/8"	10	8	18,5	10	3
XVRC04R02		R 1/4"	10	10	20	14	3
XVRC06R01	6	R 1/8"	12	8	21	12	4
XVRC06R02		R 1/4"	12	10	20,5	14	4
XVRC08R01	8	R 1/8"	14	8	26	14	5
XVRC08R02		R 1/4"	14	10	24	14	6

XVRC-G

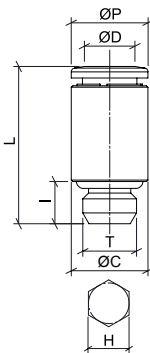


Male connector BSPP & metric thread stainless steel AISI 316L

CODE	ØD	T	ØP	ØC	I	L	CH	H
XVRC04M5	4	M5x0,8	10	7	4	19	10	2,5
XVRC04G01		G 1/8"	10	13	5,5	18	13	3
XVRC04G02		G 1/4"	10	16	6,5	18	16	3
XVRC06M5	6	M5x0,8	12	7	5	21	12	2,5
XVRC06G01		G 1/8"	12	13	5,5	19,5	13	4
XVRC06G02		G 1/4"	12	16	6,5	19,5	16	4
XVRC08G01	8	G 1/8"	14	14	5,5	24,5	14	5
XVRC08G02		G 1/4"	14	16	6,5	21,5	16	6
* XVRC10G02	10	G 1/4"	16	16	6,5	27,5	16	7
* XVRC10G03		G 3/8"	16	20	7,5	25	20	8
* XVRC12G03	12	G 3/8"	19	22	7,5	29,5	22	10
* XVRC12G04		G 1/2"	19	25	9	28	25	10

* available soon

XVROC-G



Male connector round body BSPP & metric thread stainless steel AISI 316L

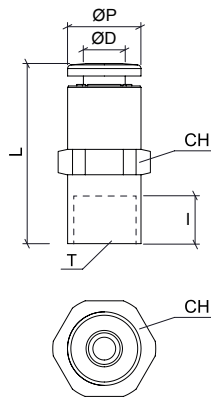
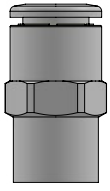
CODE	ØD	T	ØP	ØC	I	L	H
XVROC04M5	4	M5x0,8	10	10	4	19	2,5
XVROC04M7		M7x1	10	10	5,5	20,5	2,5
XVROC06M7C	6	M7x1	10	10	5,5	20,5	4
XVROC06G01		G 1/8"	12	14	5,5	19,5	4
XVROC08G01	8	G 1/8"	14	14	5,5	24,5	5



XVRCF-G



Female connector BSPP thread stainless steel AISI 316L

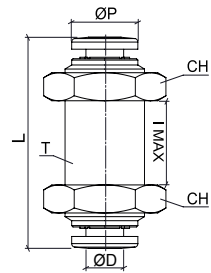
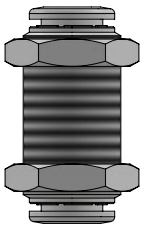


CODE	ØD	T	ØP	I	L	CH
XVRCF04G01	4	G 1/8"	10	7,5	24,5	13
XVRCF06G01	6	G 1/8"	12	7,5	27	13
XVRCF08G02	8	G 1/4"	14	11	30	16

XVRMM



Bulkhead connector stainless steel AISI 316L



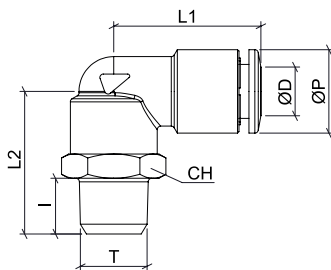
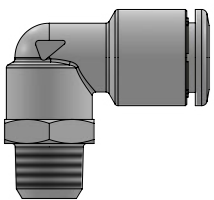
CODE	ØD	T	ØP	I (MAX)	L	CH
XVRMM04	4	M12x1	10	12	30	16
XVRMM06	6	M14x1	12	15	35,5	17
XVRMM08	8	M16x1	14	16	36,5	19
* XVRMM10	10	M20x1	16	19	43	24
* XVRMM12	12	M22x1,5	19	20	44	25

* available soon

XVRL-R



Swivel male elbow BSPT thread stainless steel AISI 316L



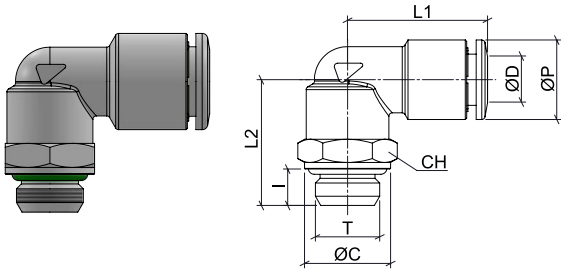
CODE	ØD	T	ØP	I	L1	L2	CH
XVRL04R01	4	R 1/8"	10	8	19,5	20,5	13
XVRL04R02		R 1/4"	10	10	19,5	23	14
XVRL06R01	6	R 1/8"	12	8	21	20,5	13
XVRL06R02		R 1/4"	12	10	21	23	14
XVRL08R01	8	R 1/8"	14	8	23	20,5	14
XVRL08R02		R 1/4"	14	10	23	23	14



XVRL-G



Swivel male elbow BSPP & metric stainless steel AISI 316L



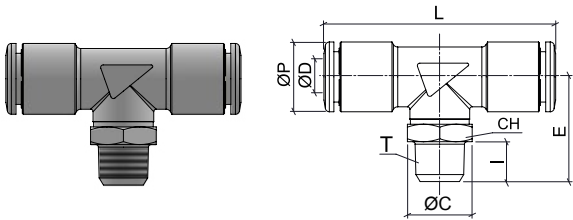
CODE	ØD	T	ØP	ØC	I	L1	L2	CH
XVRL04M5	4	M5x0,8	10	7	4	18	16,5	8
XVRL04G01		G 1/8"	10	13	5,5	19,5	19	13
XVRL04G02		G 1/4"	10	16	6,5	19,5	21,5	13
XVRL06M5	6	M5x0,8	12	7	4	21	16,5	8
XVRL06G01		G 1/8"	12	13	5,5	21	19	13
XVRL06G02		G 1/4"	12	16	6,5	21	21	16
XVRL08G01	8	G 1/8"	14	13	5,5	23	19	13
XVRL08G02		G 1/4"	14	16	6,5	23	21	16
XVRL08G03		G 3/8"	14	20	7,5	23	23	20
* XVRL10G02	10	G 1/4"	16	16	6,5	26	23	16
* XVRL10G03		G 3/8"	16	20	7,5	26	26	20
* XVRL12G03	12	G 3/8"	19	20	7,5	31	29	20
* XVRL12G04		G 1/2"	19	25	9	31	29	20

* available soon

XVRT-R



Swivel male tee BSPT thread stainless steel AISI 316L

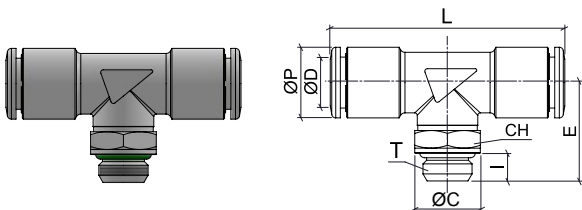


CODE	ØD	T	ØP	I	E	L	CH
XVRT04R01	4	R 1/8"	10	8	21	39	13
XVRT06R01	6	R 1/8"	12	8	21	42	13
XVRT06R02		R 1/4"	12	10	23,5	42	14
XVRT08R01	8	R 1/8"	14	8	21	46,5	13
XVRT08R02		R 1/4"	14	10	23,5	46,5	14

XVRT-G



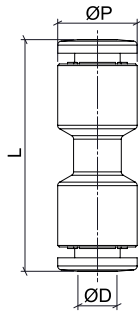
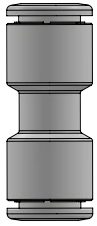
Swivel male tee BSPP & metric thread stainless steel AISI 316L



CODE	ØD	T	ØP	ØC	I	E	L	CH
XVRT04M5	4	M5x0,8	10	7	4	17	32	8
XVRT04G01		G 1/8"	10	13	5,5	19,5	39	13
XVRT06M5	6	M5x0,8	12	7	4	17	40	8
XVRT06G01		G 1/8"	12	13	5,5	19,5	42	13
XVRT06G02		G 1/4"	12	16	6,5	22	42	13
XVRT08G01	8	G 1/8"	14	13	5,5	19,5	46,5	13
XVRT08G02		G 1/4"	14	16	6,5	22	46,5	13
* XVRT10G02	10	G 1/4"	16	16	6,5	23	52	16
* XVRT10G03		G 3/8"	16	20	7,5	26	52	16
* XVRT12G03	12	G 3/8"	19	20	7,5	26,5	62	20
* XVRT12G04		G 1/2"	19	25	9	29	62	20

* available soon

XVRUC

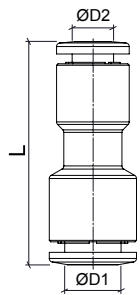
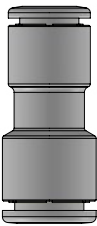


Union connector metric tube stainless steel AISI 316L

CODE	ØD	ØP	L
XVRUC04	4	10	29
XVRUC06	6	12	32
XVRUC08	8	14	35,5
* XVRUC10	10	16	39,5
* XVRUC12	12	19	44

* available soon

XVRG

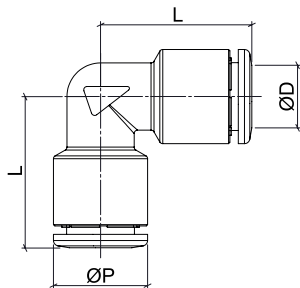
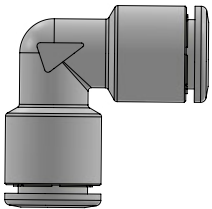


Reduced union connector stainless steel AISI 316L

CODE	ØD1	ØD2	L
XVRG0604	6	4	30,5
XVRG0806	8	6	34
* XVRG1008	10	8	37
* XVRG1210	12	10	41,5

* available soon

XVRUL



Union elbow metric tube stainless steel AISI 316L

CODE	ØD	ØP	L
XVRUL04	4	10	16,5
XVRUL06	6	12	20,5
XVRUL08	8	14	22,5
* XVRUL10	10	16	25
* XVRUL12	12	19	29

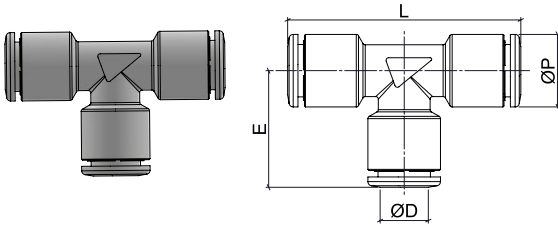
* available soon



XVRUT



Union tee metric tube stainless steel AISI 316L



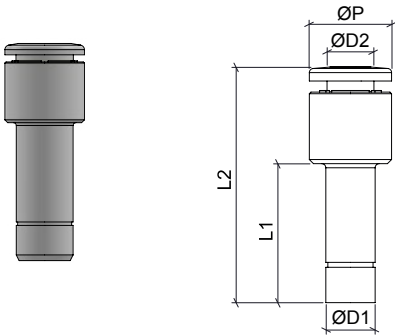
CODE	ØD	ØP	E	L
XVRUT04	4	10	16,5	33
XVRUT06	6	12	20,5	41
XVRUT08	8	14	22,5	45
* XVRUT10	10	16	25	50,5
* XVRUT12	12	19	29	58

* available soon

XVRGJ



Stem reduction metric tube stainless steel AISI 316L



CODE	ØD1	ØD2	ØP	L1	L2
XVRGJ0604	6	4	10	17	28,5
XVRGJ0806	8	6	12	19,5	32,5
XVRGJ1008	10	8	14	24	38



NSF CERTIFICATION FOR TIERRE GROUP S.P.A.

NSF International

789 N. Dixboro Road, Ann Arbor, MI 48105 USA

RECOGNIZES

Tierre Group S.p.A.
Italy

AS COMPLYING WITH NSF/ANSI 169 AND ALL APPLICABLE REQUIREMENTS.
PRODUCTS APPEARING IN THE NSF OFFICIAL LISTING ARE
AUTHORIZED TO BEAR THE NSF MARK.



Certification Program Accredited by the American National Standards Institute



Certification Program Accredited by the Standards Council of Canada

This certificate is the property of NSF International and must be returned upon request. This certificate remains valid as long as this client has products in NSF's Official Listings for the referenced standards. For the most current and complete Listing information, please access NSF's website (www.nsf.org).

July 10, 2019
Certificate# C0484626 - 01

Sarah Krol
Global Managing Director, Food Safety Product Certification





Tierre Group S.p.a.

via dell'Industria, 18 - 20032 Cormano (MI)

Tel. +39 02 663088.1 - Fax +39 02 66304172

www.tierregroup.com - info@tierregroup.com

C.F. e P.IVA 12437570158

Cap. Soc. Euro 120.000,00 i.v. - REA MI-1558390