



Solenoid Pump PX-G Series

PX50G

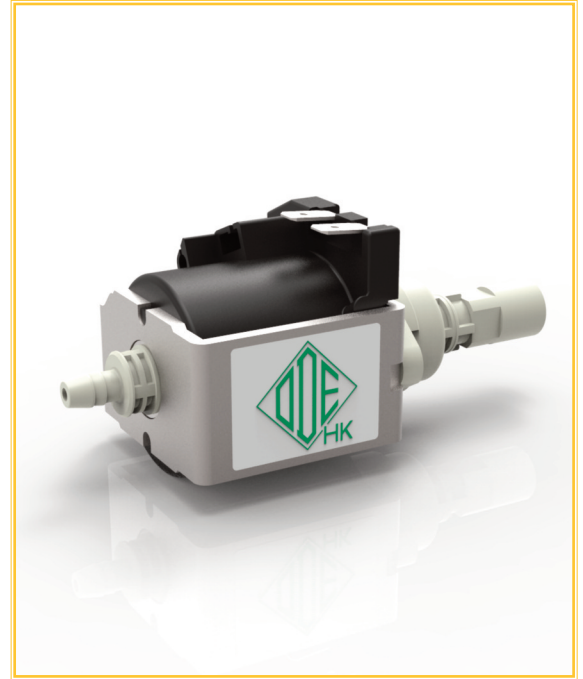
FEATURES:

Outlet connection	G 1/8
Pressure max	15 bar
Fluid	Water
Max Ambient Temperature	35°C
Fluid Temperature	+ 4°C - 35°C
Terminals	6.3mm x 0.8mm Faston type

External diode not required
Patented solution

MATERIALS:

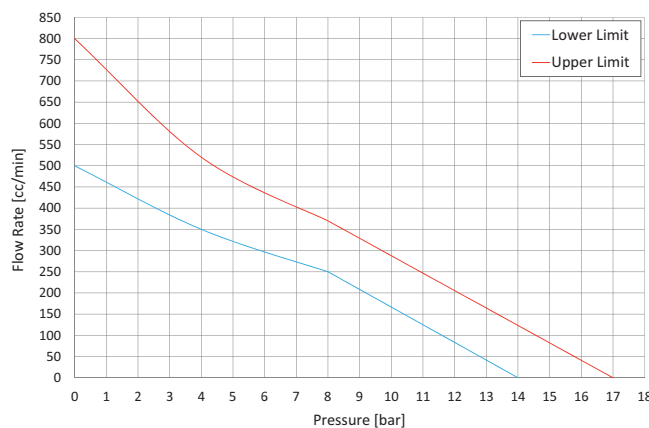
Body	PA66
Plunger	Stainless Steel series 400
Springs	Stainless Steel series 300
Check valve	NBR
Seals	NBR



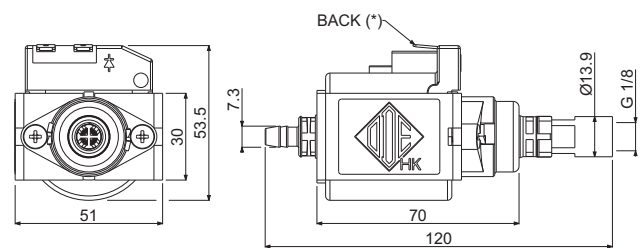
Code	Voltage Frequency [V - Hz]	Duty cycle ON/OFF [min.]	Class	Power	Approvals
PX50G120-AAB-001	120 ~ 60	2/1	F (155°C)	0,6 A	UL NSF LFGB
PX50G220-AAB-001	220 ~ 60	1/1,5	H (180°C)	48 W	CB NSF LFGB
PX50G230-AAB-001	230 ~ 50	2/1	H (180°C)	46 W	CE VDE CQC NSF LFGB

PERFORMANCE CURVE:

Performances measured with cold coil, using water as fluid.



DIMENSIONS:



(*) Also available with faston orientation UP and FORWARD

Note

The performance curve is referred to the 230V 50 Hz version, for different voltages the limits can be slightly different. Please contact our Sales Office for any further clarifications that may be required | A continuous operation can damage the unit permanently | A long storage of the pump, particularly in hot environments, can cause problems during the first operations of the component.

ODE S.r.l. is the official distributor of the products marked *ODE_{HK}.
ODE_{HK} reserves the right to carry out technical and aesthetic modifications without prior notice.
For any request for Product certificate, please contact ODE S.r.l. Sales Office.