



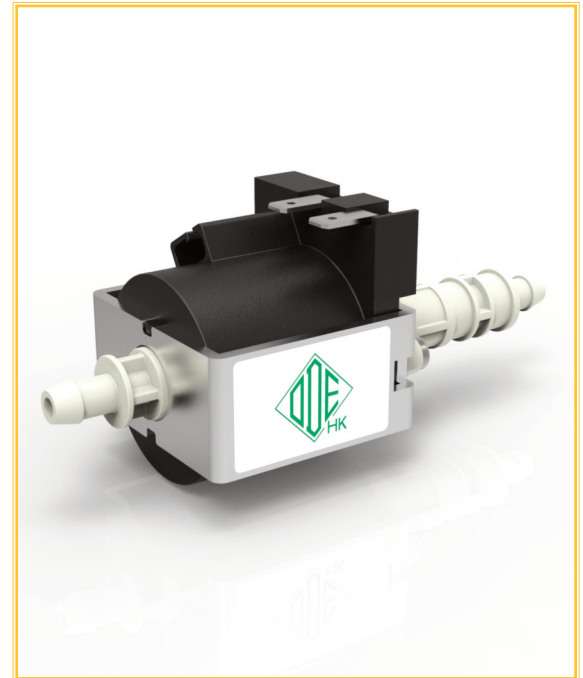
# Compact Solenoid Pump PF Series

PF60A

## FEATURES:

Outlet connection	Hose connection Ø 6
Pressure max	2,5 bar
Fluid	Water
Max Ambient Temperature	35°C
Fluid Temperature	+ 4°C - 35°C
Terminals	4.8mm x 0.8mm Faston type

External diode not required



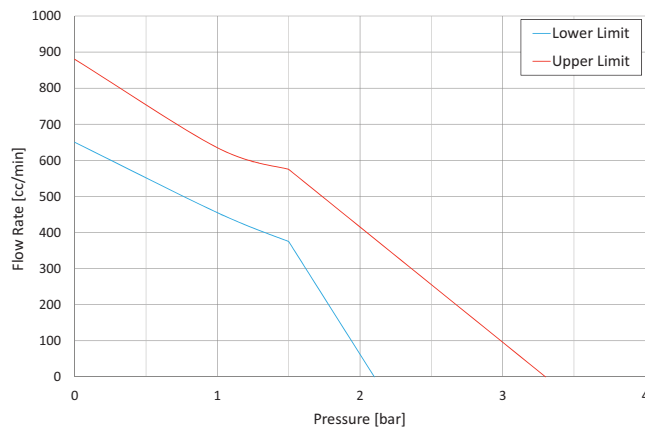
## MATERIALS:

Body	PA66
Plunger	Stainless Steel series 400
Springs	Stainless Steel series 300
Check valve	NBR
Seals	EPDM/NBR

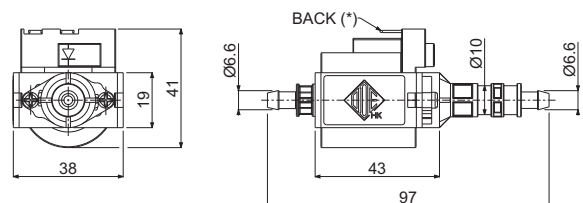
Code	Voltage Frequency [V - Hz]	Duty cycle ON/OFF [min.]	Class	Power	Approvals
PF60A-230A-ADB-20	230 ~ 50	1/1	H (180°C)	27 W	CE   VDE   NSF   LFGB

## PERFORMANCE CURVE:

Performances measured with cold coil, using water as fluid.



## DIMENSIONS:



(\*) Also available with faston orientation UP and FORWARD

## Note

The performance curve is referred to the 230V 50 Hz version, for different voltages the limits can be slightly different. Please contact our Sales Office for any further clarifications that may be required | A continuous operation can damage the unit permanently | A long storage of the pump, particularly in hot environments, can cause problems during the first operations of the component .

ODE S.r.l. is the official distributor of the products marked \*ODE<sub>HK</sub>.  
ODE<sub>HK</sub> reserves the right to carry out technical and aesthetical modifications without prior notice.  
For any request for Product certificate, please contact ODE S.r.l. Sales Office.