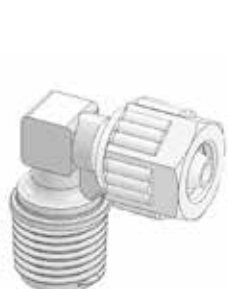


PVDF PUSH-ON FITTINGS

- Raccordi a calzamento in PVDF
- Raccords instantanés en PVDF
- Schnellverschraubungen aus PVDF
- Racores rápidos en PVDF
- Conexões tipo push-on em PVDF



-20°C ÷ 120°C
 (Subject to application)

Up to 14 Bar at 20°C

	R1/8	R1/4	R3/8	R1/2	R3/4
6	•	•	•	•	•
8	•	•	•	•	•
10	•	•	•	•	•
12	•	•	•	•	•



Construction Materials	Materiali Costruttivi	Matériaux Constitutifs	Baumaterialien	Materiales constructivos	Materiais de construção
Body: polyvinylidene fluoride (PVDF) Lock nut: polyvinylidene fluoride (PVDF) O'ring: silicon	Corpo: fluoruro di polivinilidene (PVDF) Ghiera di serraggio: fluoruro di polivinilidene (PVDF) O'ring: silicone	Corps: fluorure de polyvinylidène (PVDF) Écrou de blocage: fluorure de polyvinylidène (PVDF) Joint torique: silicone	Körper: polyvinylidenfluorid (PVDF) Sperrring: polyvinylidenfluorid (PVDF) O-Ring: silikon	Cuerpo: fluoruro de polivinilideno (PVDF) Tuerca de cierre: fluoruro de polivinilideno (PVDF) Junta tórica: silicona	Cuerpo: fluoruro de polivinilideno (PVDF) Porca de fixação: fluoruro de polivinilideno (PVDF) Anel O'ring: silicone
Data Sheet	Dati Tecnici	Informations Techniques	Technische Daten	Datos técnicos	Dados Técnicos
Type of fluids: compressed air, water and fluids suitable with construction materials Threads: taper gas BSPT ISO 7 from R1/8" to R3/4" Tubes to be used: PU, PE, PA, PTFE, FEP Features: good resistance to almost all kind of very corrosive fluids like acids, weak bases, halogens, alcohols, salts, heavy duty oxidants, detergents, etc. UV resistant, Nuclear resistant.	Fluidi compatibili: aria compressa, acqua e fluidi compatibili con i materiali costruttivi Filettature: gas conica BSPT ISO 7 da R1/8" a R3/4" Tubi da utilizzare: PU, PE, PA, PTFE, FEP Caratteristiche: buona resistenza alla maggior parte delle sostanze corrosive, quali acidi, basi forti, alogeni, alcalici, sali, ossidanti, detergenti, ecc. Resistente ai raggi UV ed alle radiazioni in genere.	Fluides compatibles: air comprimé, eau et fluides compatibles avec les matériaux utilisés Filetage: gaz conique BSPT ISO 7 de R1/8" à R3/4" Tubes à utiliser: PU, PE, PA, PTFE, FEP Caractéristiques: bonne résistance à la plupart des substances corrosives, telles qu'acides, bases fortes, halogènes, alcooliques, salines, oxydantes, détergents. Résistant aux rayons UV et aux radiations en général.	Kompatible flüssigkeiten: druckluft, wasser und flüssigkeiten kompatibel mit den baustoffen Gewinde: whitworth-Gewinde konisch BSPT ISO 7 von R1/8" bis R3/4" Zu verwendende rohre: PU, PE, PA, PTFE, FEP Eigenschaften: gute beständigkeit gegen die meisten korrosiven substanzen, wie säuren, starke basen, halogene, alkohol, salze, oxidantien, Reinigungsmittel. Beständig gegen UV-Strahlung und strahlung im allgemeinen.	Fluidos compatibles: aire comprimido, água e fluidos compatíveis com los materiales constructivos Roscas: gas cónica BSPT ISO 7 desde R1/8" hasta R3/4" Tubos a utilizar: PU, PE, PA, PTFE, FEP Características: buena resistencia a la mayor parte de las sustancias corrosivas, como ácidos, bases fuertes, halógenos, alcohólicos, sales, oxidantes y detergentes. Resistente a los rayos UV y a las radiaciones en general.	Fluidos compatíveis: ar comprimido, água e fluidos compatíveis com os materiais de construção Roscas: gás cónica BSPT ISO 7 de R1/8" a R3/4" Tubos a serem utilizados: PU, PE, PA, PTFE, FEP Características: boa resistência à maior parte das substâncias corrosivas, como ácidos, bases fortes, halogénios, álcoois, sais, oxidantes, detergentes. Resistente aos raios UV e às radiações em geral.
Available on demand: tube -INCH thread -NPT	Disponibile a richiesta: tubo -INCH filettatura -NPT	Disponible sur demande: tubes -INCH filetage -NPT	Auf anfrage: rohre -INCH gewinde -NPT	Disponibile en tamaños: tubos -INCH roscas -NPT	Disponível nos tamanhos: tubos -INCH roscas -NPT

<p>2900</p> <p>2900TR186 2900TR146 2900TR188 2900TR148 2900TR1810 2900TR1410</p> <p>Tube : Metric Thread : BSPT</p>	<p>2905</p> <p>2905TR186 2905TR146 2905TR188 2905TR148 2905TR388 2905TR128 2905TR1410 2905TR3810 2905TR1210</p> <p>Tube : Metric Thread : BSPT</p>	<p>2910</p> <p>2910TR186 2910TR146 2910TR386 2910TR126 2910TR346 2910TR188 2910TR148 2910TR388 2910TR128 2910TR348</p> <p>2910TR1410 2910TR3810 2910TR1210 2910TR3410 2910TR1412 2910TR3812 2910TR1212 2910TR3412</p> <p>Tube : Metric Thread : BSPT</p>
<p>2915</p> <p>2915TR6 2915TR8 2915TR86 2915TR12</p> <p>Tube : Metric Thread : BSPT</p>	<p>2930</p> <p>2930TR186 2930TR146 2930TR148</p> <p>Tube : Metric Thread : BSPT</p>	<p>2935</p> <p>2935TR6 2935TR8 2935TR12</p> <p>Tube : Metric Thread : BSPT</p>

PVDF PUSH-ON FITTINGS

- Raccordi a calzamento in PVDF
- Raccords instantanés en PVDF
- Schnellverschraubungen aus PVDF
- Racores rápidos en PVDF
- Conexões tipo push-on em PVDF

<p>2940</p>  <p>2940TR186 2940TR146 2940TR188 2940TR148 2940TR388 2940TR1412 2940TR3812 2940TR1212</p> <p>Tube : Metric Thread : BSPT</p>	<p>NEW 2950</p>  <p>2950TR186 2950TR148</p> <p>Tube : Metric Thread : BSPT</p>	<p>2955</p>  <p>2955TR186 2955TR146 2955TR188 2955TR148 2955TR388 2955TR1412 2955TR3812 2955TR1212</p> <p>Tube : Metric Thread : BSPT</p>
<p>2960</p>  <p>2960TR186 2960TR146 2960TR188 2960TR148 2960TR388 2960TR1412 2960TR3812 2960TR1212</p> <p>Tube : Metric Thread : BSPT</p>	<p>2965</p>  <p>2965TR6 2965TR8 2965TR12</p> <p>2965TR68  2965TR86 </p> <p>Tube : Metric Thread : BSPT</p>	<p>NEW 2970</p>  <p>2970TR148</p> <p>Tube : Metric Thread : BSPT</p>
<p>2230</p>  <p>2230TR6 2230TR8 2230TR10 2230TR12</p> <p>Tube : Metric Thread : BSPT</p>		