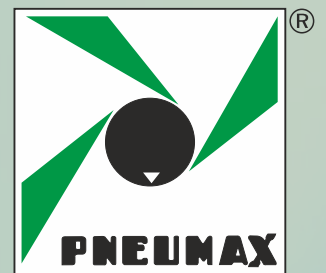


Components for pneumatic automation

Miniaturized proportional pressure regulator



PNEUMAX GREEN LINE: TECHNOLOGY & INNOVATION





General

Modern industrial applications constantly require more sophisticated and better performing pneumatic components . Flexibility and adaptability are key factor when designing a machine. The possibility to change the application parameter during operation such as for example the speed of a cylinder or the force generated by a rotary actuator are beneficial to the designer. In the past it was necessary to design complicated pneumatic circuits based on pneumatic logic elements which required a lot of space and complicated set up, today, thanks to the electronic proportional regulators such operations are extremely easy to achieve and offer even more flexibility.

Pneumax miniaturized proportional regulators series integrates all the main features of the 521 series with the exclusion of the display and analogue/digital output. High precision in pressure regulation, fast response speed, assembling options and reduced dimensions are the main advantages.

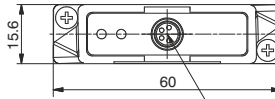
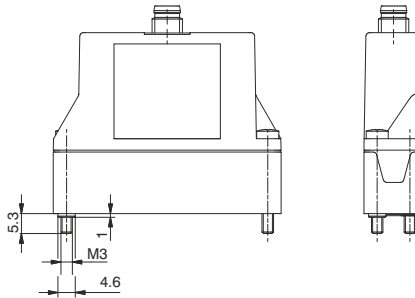
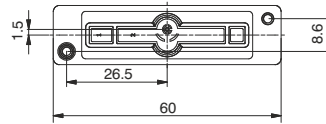
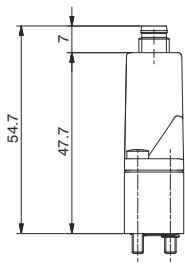
**N.B.: It is possible, upon request , to use specific subbases to mount the regulator on manifold.
It is also possible to use sub bases with 4mm push in fittings.
It is possible to produce the external feed back version.**

Features

Pneumatic	Fluid	Air filtered at 5 micron and dehumidified		
	Minimum inlet pressure	Desired outlet pressure + 1 bar		
	Maximum inlet pressure	10 bar		
	Outlet pressure	Ordering code	009	
		Pressure value	0 ÷ 9 bar	
	Nominal flowrate from 1 to 2 (6 bar Δp 1 bar)	7 NI /min		
	Discharge flowrate (at 6 bar with 1 bar overpressure)	7 NI /min		
	Air consumption	M5 / Ø4		
	Operating connection	M5 / Ø4		
	Exhaust connection	M5 / Ø4		
	Maximum fitting tightening	3 Nm		
Electric	Supply voltage	24VDC ± 10% (stabilised with ripple <1%)		
	Standby current consumption	55 mA		
	Current consumption with solenoid valves on	145 mA		
	Reference signal	Voltage*	0 ÷ 10 V	
		Current*	4 ÷ 20 mA	
	Input impedance	Voltage	10 KΩ	
		Current	250 Ω	
Analog outputs voltage	0,2 ÷ 10 V (10 V a 9 bar)			
Connector	M8 4 poles			
Functional	Linearity	< ± 0,3 % F.S.		
	Hysteresis	<0,3 % F.S.		
	Repeatability	< ± 0,5 % F.S.		
	Sensitivity	< ± 0,5 % F.S.		
	Assembly position	Indifferent		
	Protection grade	IP65 (with casing fitted)		
Ambient temperature	-5° ÷ 50°C / 23° ÷ 122°F			
Constructional	Body	Technopolymer		
	Seals	NBR		
	Cover for electrical part	Technopolymer		
	Weight	60 gr.		

* Request during ordering process

Proportional pressure regulator



M8 CONECTOR M8, 4 POLES

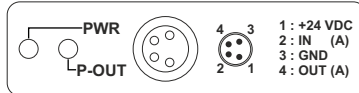
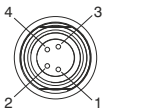
Ordering code

170E2M.V.M.009

VERSION

- T = Voltage signal
- C = Current signal

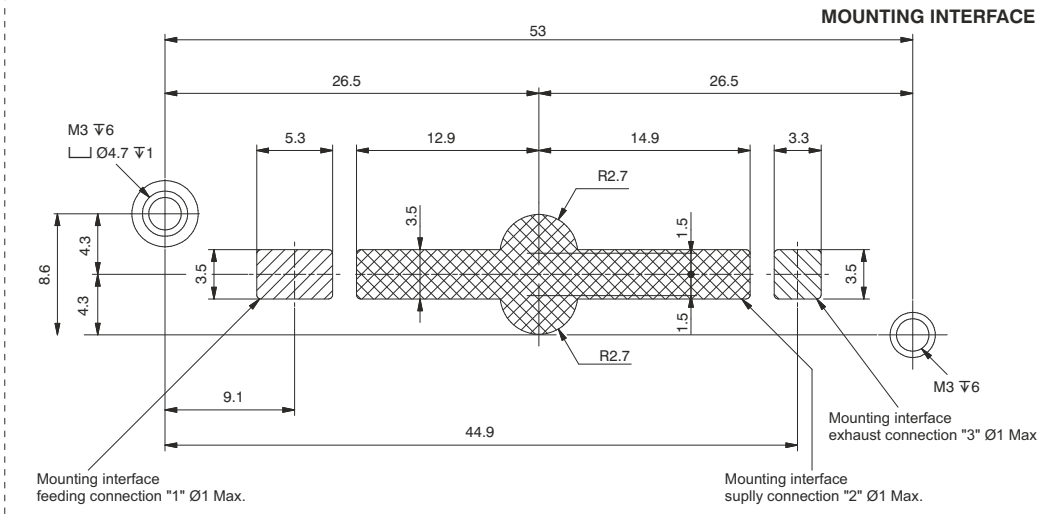
M8 CONECTOR M8, 4 POLES



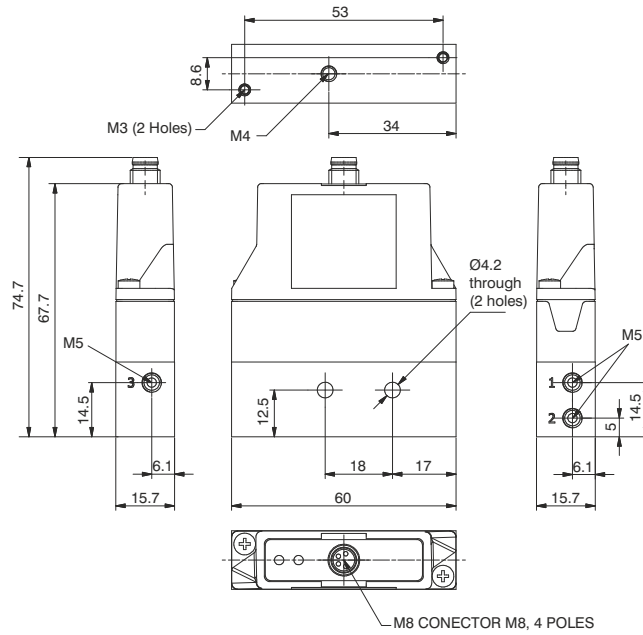
PIN	DESCRIPTION
1	+24 VDC
2	ANALOG INPUT
3	GND
4	ANALOG OUTPUT

PWR	Green Led: The regulator is properly powered
P-OUT	Green Led: lights up when the outlet pressure is higher than the desired pressure minus 0.2 bar and less than the desired pressure more 0.2 bar

MOUNTING INTERFACE



Proportional pressure regulator with M5 horizontal single base



Ordering code

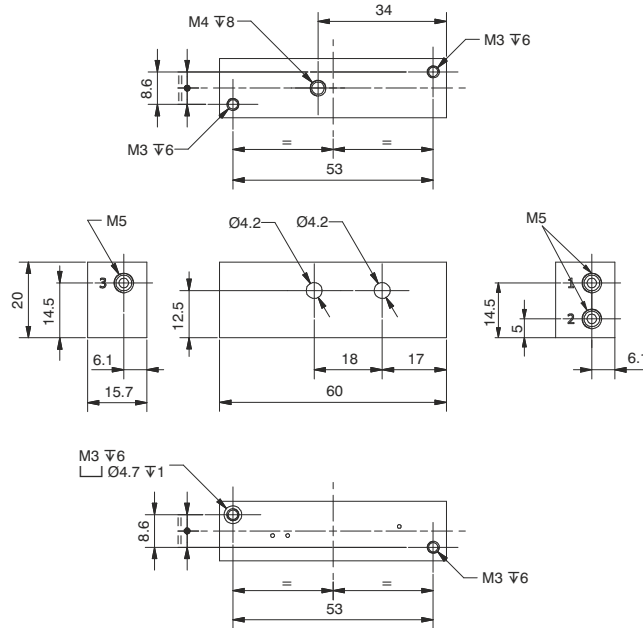
170E2M.V.M.009.FO

VERSION

- T = Voltage signal
- C = Current signal

Weight 110 gr.

M5 horizontal simple base

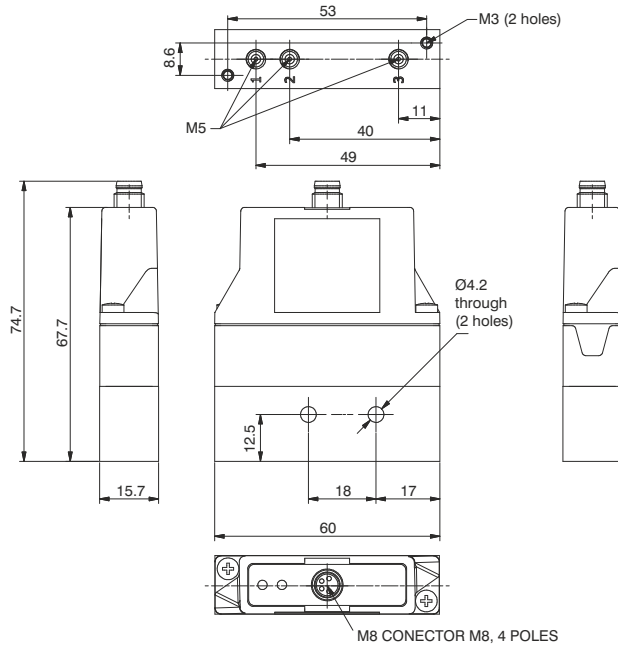
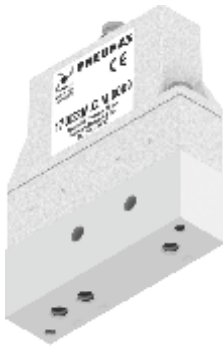


Ordering code

170M1.FO

Weight: 50 gr.

Proportional pressure regulator with M5 vertical single base



Ordering code

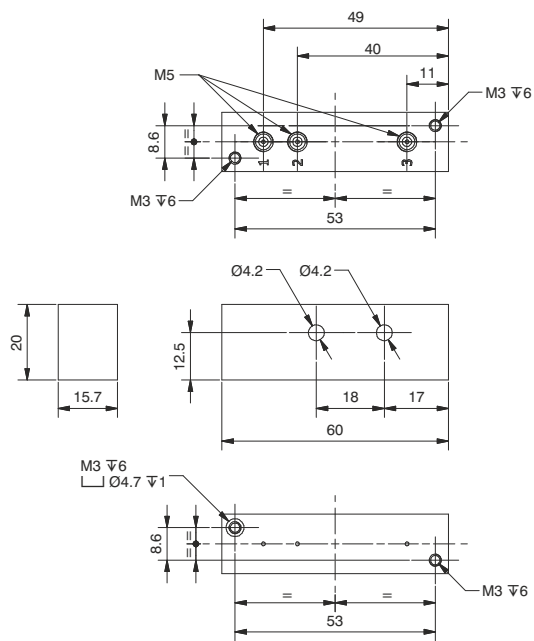
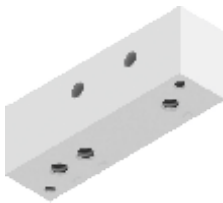
170E2M. M.009.FV

VERSIONE

- T = Voltage signal
- C = Current signal

Weight: 110 gr.

3 M5 vertical single base

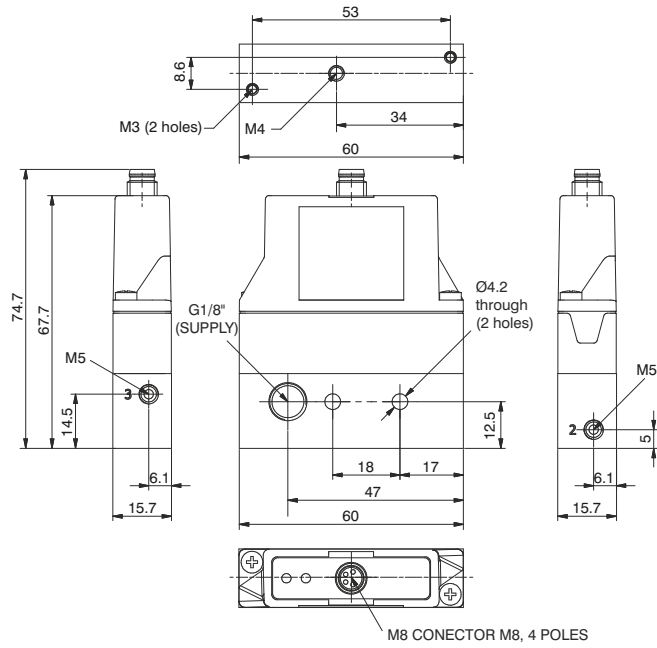


Ordering code

170M1.FV

Weight: 50 gr.

Proportional pressure regulator with M5 through single base



Ordering code

170E2M.V.M.009.FP

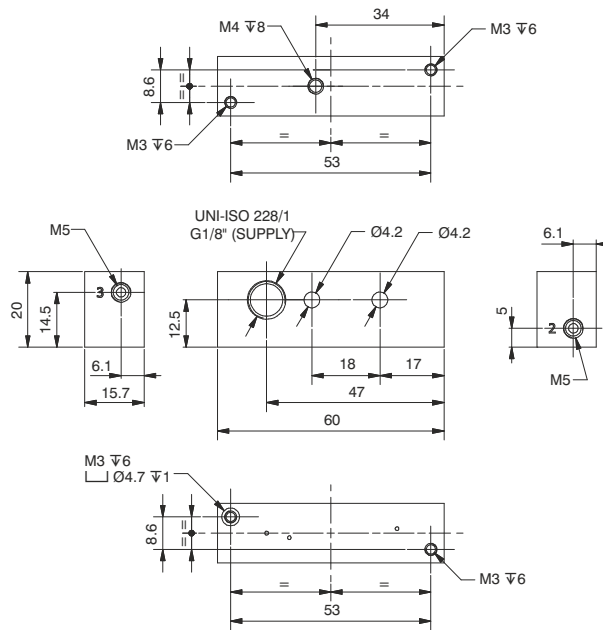
VERSIONE

V T = Voltage signal

C = Current signal

Weight: 110 gr.

M5 through single base



Ordering code

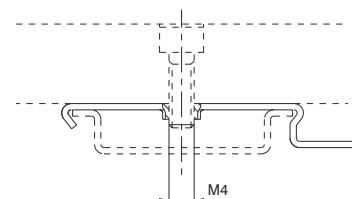
170M1.FP

Weight: 50 gr.

Fixing bracket

Ordering code

800.00



Weight gr. 5

PNEUMAX S.p.A.
24050 Lurano (BG) - Italia
Via Cascina Barbellina, 10

Tel +39 (0) 35 4192777
Fax +39 (0) 35 4192740
+39 (0) 35 4192741

info@pneumaxspa.com
www.pneumaxspa.com

D. NW. 79/GB - 04/2016
PRINTED IN ITALY - 04/2016

