

INNESTI RAPIDI IN TECNOPOLIMERO • plastic push-in fittings

LEGENDA CODICE • Model designation

Filetto Conico BSPT • BSPT Thread

WTC	06	R01																																				
↓	↓	↓																																				
Codice Code	Diametro Tubo tube diameter	Filetto thread size																																				
	<table border="1"> <thead> <tr> <th>Code</th> <th>Size</th> </tr> </thead> <tbody> <tr><td>04</td><td>4mm</td></tr> <tr><td>05</td><td>5mm</td></tr> <tr><td>06</td><td>6mm</td></tr> <tr><td>07</td><td>7mm</td></tr> <tr><td>08</td><td>8mm</td></tr> <tr><td>09</td><td>9mm</td></tr> <tr><td>10</td><td>10mm</td></tr> <tr><td>11</td><td>11mm</td></tr> <tr><td>12</td><td>12mm</td></tr> <tr><td>14</td><td>14mm</td></tr> <tr><td>15</td><td>15mm</td></tr> <tr><td>16</td><td>16mm</td></tr> </tbody> </table>	Code	Size	04	4mm	05	5mm	06	6mm	07	7mm	08	8mm	09	9mm	10	10mm	11	11mm	12	12mm	14	14mm	15	15mm	16	16mm	<table border="1"> <thead> <tr> <th colspan="2">Conico BSPT BSPT thread</th> </tr> </thead> <tbody> <tr><td>01</td><td>R1/8"</td></tr> <tr><td>02</td><td>R1/4"</td></tr> <tr><td>03</td><td>R3/8"</td></tr> <tr><td>04</td><td>R1/2"</td></tr> </tbody> </table>	Conico BSPT BSPT thread		01	R1/8"	02	R1/4"	03	R3/8"	04	R1/2"
Code	Size																																					
04	4mm																																					
05	5mm																																					
06	6mm																																					
07	7mm																																					
08	8mm																																					
09	9mm																																					
10	10mm																																					
11	11mm																																					
12	12mm																																					
14	14mm																																					
15	15mm																																					
16	16mm																																					
Conico BSPT BSPT thread																																						
01	R1/8"																																					
02	R1/4"																																					
03	R3/8"																																					
04	R1/2"																																					

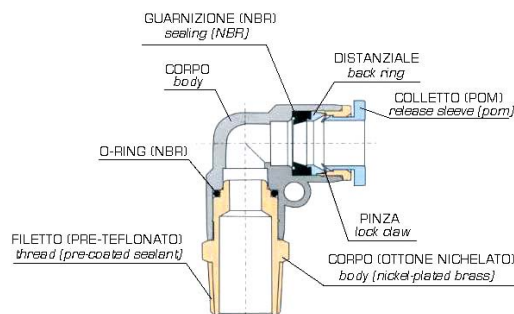
Colore Colletto: Nero
sleeve colour: black

Filetto Cilindrico BSPP e Metrico • BSPP & Metric Thread

WTC	06	G01																														
↓	↓	↓																														
WTC ↓ Codice Code	Diametro Tubo tube diameter	Filetto thread size																														
	<table border="1"> <thead> <tr> <th>Code</th> <th>Size</th> </tr> </thead> <tbody> <tr><td>04</td><td>4mm</td></tr> <tr><td>06</td><td>6mm</td></tr> <tr><td>08</td><td>8mm</td></tr> <tr><td>10</td><td>10mm</td></tr> <tr><td>12</td><td>12mm</td></tr> <tr><td>14</td><td>14mm</td></tr> <tr><td>16</td><td>16mm</td></tr> </tbody> </table>	Code	Size	04	4mm	06	6mm	08	8mm	10	10mm	12	12mm	14	14mm	16	16mm	<table border="1"> <thead> <tr> <th colspan="2">Cilindrico BSPP BSPP thread</th> </tr> </thead> <tbody> <tr><td>M5</td><td>M5x0,8P</td></tr> <tr><td>M6</td><td>M6x1,0P</td></tr> <tr><td>01</td><td>G1/8"</td></tr> <tr><td>02</td><td>G1/4"</td></tr> <tr><td>03</td><td>G3/8"</td></tr> <tr><td>04</td><td>G1/2"</td></tr> </tbody> </table>	Cilindrico BSPP BSPP thread		M5	M5x0,8P	M6	M6x1,0P	01	G1/8"	02	G1/4"	03	G3/8"	04	G1/2"
Code	Size																															
04	4mm																															
06	6mm																															
08	8mm																															
10	10mm																															
12	12mm																															
14	14mm																															
16	16mm																															
Cilindrico BSPP BSPP thread																																
M5	M5x0,8P																															
M6	M6x1,0P																															
01	G1/8"																															
02	G1/4"																															
03	G3/8"																															
04	G1/2"																															

Colore Colletto: Nero
sleeve colour: black

SEZIONE INTERNA • Construction



DATI TECNICI

Applicazioni	Pneumatica & Vuoto
Materiali utilizzati	Corpo: ottone nichelato e PBT Colletto (pinza di sgancio): resina acetalica POM Pinza di tenuta: acciaio SUS 301 O'ring: NBR senza silicone
Filettature	Gas conica BSPT da R1/8" a R1/2" preteflonata Metrica M5, M6 Gas Cilindrica BSPP con OR da G1/8" a G1/2"
Pressione d'esercizio	da 0 a 150 PSI / da 0 a 10 Bar
Pressione negativa	-29,5 in Hg / -750mmHG (-750 torr)
Temperatura d'esercizio	da 32 a 140 °F / da 0°C a 60°C
Tubi da utilizzare	Poliammide (PA) Poliuretano (PU)

Technical specifications

applications	pneumatics & vacuum
materials used	body: brass nickel plated & PBT collet (sleeve): acetal resin POM lock claw: steel SUS 301 o'ring: NBR silicon free
threads	BSPT from R1/8" to R1/2" teflon coated Metric: M5, M6 BSPP with OR from G1/8" to G1/2"
working pressure	from 0 to 150 PSI / from 0 to 10 Bar
negative pressure	-29,5 in Hg / -750 mmHg (-750 torr)
working temperature	from 32 to 140 °F / from 0°C to 60°C
tubes used	polyamide (PA) polyurethane (PU)

Prodotti conformi alla direttiva 2002/95/EC **RoHS**

products in conformity with the directive 2002/95/EC **RoHS**

I dati tecnici e le quote non sono vincolanti • drawings and technical data are not binding

INNESTI RAPIDI IN TECNOPOLIMERO • *plastic push-in fittings*

4

INNESTI RAPIDI • push-in fittings



ISTRUZIONI PER IL CORRETTO USO DEI RACCORDI

- Non utilizzare i raccordi di questa serie con fluidi diversi dall'aria. Contattare l'Ufficio Tecnico Tierre Group per l'utilizzo dei raccordi con altri fluidi.
- Si raccomanda di prevenire eventuali aumenti della pressione causati da vibrazioni, rotazioni e strappi del raccordo.
- Non utilizzare i raccordi in ambienti dove sono presenti scintille di saldatura.
- Vibrazioni o rotazioni improprie del raccordo possono comprometterne la funzionalità e causare perdite. Scegliere il prodotto in base all'applicazione utilizzata tra l'ampia gamma di raccordi del nostro catalogo.
- Non utilizzare i raccordi se sono direttamente a contatto direttamente a fluidi quali olio da taglio, olio lubrificante, olio refrigerante.



WARNING

- *Do not use them on fluids other than air. Contact Tierre Group for use on other fluids. We don't recommend or guarantee to use them for other purposes.*
- *Be sure to prevent pressure buildup caused by twisting, pulling and bending of the fitting product.*
- *Do not use the product where weld spatters occur as fire may break out.*
- *Product damage or air leakage may occur at places where there is rotation and vibration, Choose the right product from our catalogue.*
- *Do not use the product where it is directly exposed to fluids such as cutting oil, lubricating oil and coolant oil.*
- *Assemble the pipes only after clearing away impurities such as dust.*



RACCOMANDAZIONI PER LA CONNESSIONE TUBO-RACCORDO

- Inserire il tubo completamente nel raccordo fino a fine battuta.
- Tagliare il tubo a 90° (mediante l'utilizzo di apposito cutter), inserirlo fino battuta e tirarlo con accortezza per accertare il corretto inserimento
- Se ci sono danni o imperfezioni sulla superficie del tubo o se lo stesso è ovalizzato si possono verificare delle perdite d'aria od una imprevista disconnessione. Verificare il tutto scrupolosamente.
- Il diametro esterno del tubo in poliuretano si espande in base alla pressione applicata. Pertanto il reinserimento del raccordo potrebbe non essere più possibile. Verificare pertanto il diametro esterno del tubo e dopo l'utilizzo cambiarlo se lo stesso ne è stato compromesso dall'espansione.



CAUTION FOR THE INSERTION OF THE TUBE TO THE FITTING PRODUCT

- *Make sure the tube is inserted fully to the end of the fitting.*
- *To insert the tube into the fitting, cut the tube at a right angle 90°, insert it to the end and pull the tube gently to make sure it isn't released.*
- *If there are any damages or scratches on the tube surface or an oval shape, air leakage and tube release may occur. Check it meticulously.*
- *The OD of polyurethane tube expands by pressure applied on them. Reinsertion to the fitting may not be possible. Check the OD of the tube and change the tube if the expansion is serious.*



RACCOMANDAZIONI PER LA CONNESSIONE TUBO-RACCORDO

- Accertarsi che la pressione all'interno del tubo sia nulla prima di disconnettere il tubo dal raccordo
- Per sganciare il tubo premere l'anello di sgancio, tirare ed estrarre il tubo contemporaneamente.
- Tagliare la parte di tubo agganciata al raccordo per poterlo riutilizzare.



CAUTION FOR THE INSERTION OF THE TUBE TO THE FITTING

- Make sure the pressure is zero before releasing the tube from the fitting
- To release the tube, press the release ring regularly at the end and pull the tube with one hand.
- Cut the pressed part of the tube to reuse the released tube.

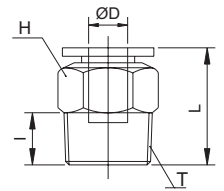
INNESTI RAPIDI IN TECNOPOLIMERO • plastic push-in fittings

diritto maschio conico BSPT nichelato • male connector BSPT thread nickel plated

WTC



CODE	ØD	T	I	L	H(Hex)	Peso Weight(g)	
WTC 04R01	4	R1/8"	7,0	19,3	10	6,2	100
WTC 04R02		R1/4"	9,5	17,9	14	9,8	100
WTC 06R01	6	R1/8"	7,0	20,4	12	6,9	100
WTC 06R02		R1/4"	9,5	22,7	14	13,3	100
WTC 06R03		R3/8"	10,5	20,7	17	19,9	50
WTC 06R04		R1/2"	13,5	24,7	21	39,8	25
WTC 08R01	8	R1/8"	7,0	25,4	14	10,0	100
WTC 08R02		R1/4"	9,5	24,9	14	11,9	100
WTC 08R03		R3/8"	10,5	21,9	17	17,5	50
WTC 08R04		R1/2"	13,5	25,9	21	37,6	25
WTC 10R01	10	R1/8"	7,0	27,7	17	16,4	50
WTC 10R02		R1/4"	9,5	29,5	17	18,6	50
WTC 10R03		R3/8"	10,5	27,0	17	20,7	50
WTC 10R04		R1/2"	13,5	25,3	21	34,6	25
WTC 12R02	12	R1/4"	9,5	32,9	20	24,5	50
WTC 12R03		R3/8"	10,5	29,9	20	25,3	50
WTC 12R04		R1/2"	13,5	32,9	21	41,0	25
WTC 16R03		16	R3/8"	10,5	37,6	24	42,0
WTC 16R04	R1/2"		13,5	35,6	24	42,1	25

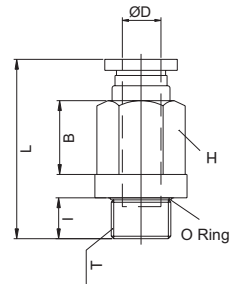


5

INNESTI RAPIDI • push-in fittings

diritto maschio cilindrico BSPP & metrico nichelato • male connector BSPP & metric thread nickel plated

CODE	ØD	T	I	L	B	H(Hex)	Peso Weight(g)	
WTC 04M5	4	M5	3,8	20,1	10,5	10	5,7	100
WTC 04M6		M6	4,5	20,8	10,5	10	6,1	100
WTC 04G01		G1/8"	5,0	19,3	7,4	10	7,4	100
WTC 04G02	6	G1/4"	5,8	16,6	3,9	10	9,4	100
WTC 06M5		M5	3,8	21,2	10,5	12	7,4	100
WTC 06M6		M6	4,5	21,7	10,5	12	7,0	100
WTC 06G01		G1/8"	5,0	19,9	6,7	12	7,5	100
WTC 06G02	8	G1/4"	5,8	20,4	6,4	12	10,8	100
WTC 06G03		G3/8"	6,8	20,0	4,5	12	17,0	50
WTC 06G04		G1/2"	8,0	21,7	4,5	12	27,5	25
WTC 08G01		G1/8"	5,0	24,4	11,1	14	11,7	100
WTC 08G02	10	G1/4"	5,8	22,2	7,0	14	11,1	100
WTC 08G03		G3/8"	6,8	21,2	4,5	14	15,7	50
WTC 08G04		G1/2"	8,0	22,9	4,5	14	27,0	25
WTC 10G01		G1/8"	5,0	26,3	11,0	17	15,9	50
WTC 10G02	12	G1/4"	5,8	27,5	13,9	17	20,4	50
WTC 10G03		G3/8"	6,8	25,0	8,9	17	20,6	50
WTC 10G04		G1/2"	8,0	22,7	4,9	17	28,5	25
WTC 12G02		G1/4"	5,8	31,2	12,0	20	26,3	50
WTC 12G03	14	G3/8"	6,8	28,2	11,0	20	24,3	50
WTC 12G04		G1/2"	8,0	28,9	9,5	20	33,3	25
WTC 14G03		G3/8"	6,8	31,8	13,0	21	30,0	25
WTC 14G04		G1/2"	8,0	29,5	10,0	24	20,0	25
WTC 16G03	16	G3/8"	6,8	34,9	14,5	24	42,0	25
WTC 16G04		G1/2"	8,0	36,1	18,0	24	50,7	25

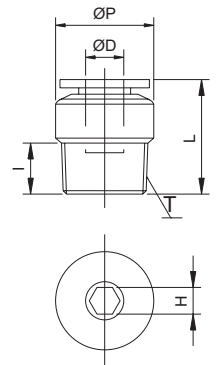


diritto maschio a brugola interna conico BSPT nichelato • male connector internal exagon BSPT thread nickel plated

WTOC



CODE	ØD	T	I	L	ØP	H(Hex)	Peso Weight(g)	
WTOC 04R01	4	R1/8"	7,0	19,3	10	3	5,6	100
WTOC 04R02		R1/4"	9,5	17,9	14	3	11,2	100
WTOC 06R01	6	R1/8"	7,0	20,4	12	4	6,3	100
WTOC 06R02		R1/4"	9,5	22,7	14	4	12,5	100
WTOC 06R03		R3/8"	10,5	20,7	17	4	19,0	50
WTOC 08R01		R1/8"	7,0	25,4	14	5	10,2	100
WTOC 08R02	8	R1/4"	9,5	24,9	14	6	13,1	100
WTOC 08R03		R3/8"	10,5	21,9	17	6	17,3	50
WTOC 08R04		R1/2"	13,5	25,9	21	6	37,9	25
WTOC 10R01		R1/8"	7,0	27,7	17	5	20,8	50
WTOC 10R02	10	R1/4"	9,5	29,5	17	6	22,5	50
WTOC 10R03		R3/8"	10,5	27,0	17	8	22,6	50
WTOC 10R04		R1/2"	13,5	25,3	21	8	34,0	25
WTOC 12R02		R1/4"	9,5	32,9	20	6	21,5	50
WTOC 12R03	12	R3/8"	10,5	29,9	20	8	22,2	50
WTOC 12R04		R1/2"	13,5	32,9	21	8	37,3	25



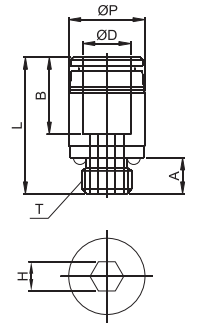
INNESTI RAPIDI IN TECNOPOLIMERO • plastic push-in fittings

diritto maschio a brugola interna metrico nichelato • male connector internal hexagon metric thread nickel plated

WTOC



CODE	ØD	T	I	L	ØP	H(Hex)	Peso Weight(g)	
WTOC 04M5	4	M5x0,8P	3,8	20,1	10	2	5,2	100
WTOC 04M6		M6x1,0P	4,5	20,8	10	2	5,6	100
WTOC 06M5	6	M5x0,8P	3,8	21,0	12	2	6,8	100
WTOC 06M6		M6x1,0P	4,5	21,7	12	2	7,2	100



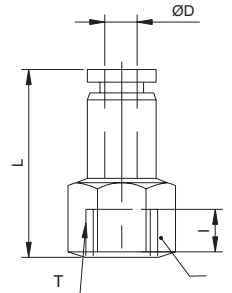
6 INNESTI RAPIDI • push-in fittings

diritto femmina cilindrico BSPP nichelato • female connector BSPP thread nickel plated

WTFC



CODE	ØD	T	I	L	H(Hex)	Peso Weight(g)	
WTFC 04G01	4	G1/8"	7,0	22,3	14	12,5	100
WTFC 04G02		G1/4"	9,0	25,3	17	18,0	50
WTFC 06G01	6	G1/8"	7,0	24,4	14	15,0	100
WTFC 06G02		G1/4"	9,0	26,4	17	19,3	50
WTFC 06G03		G3/8"	10,0	27,4	19	26,3	25
WTFC 08G01	8	G1/8"	7,0	25,9	14	15,8	50
WTFC 08G02		G1/4"	9,0	27,9	17	19,4	50
WTFC 08G03		G3/8"	10,0	28,9	19	18,4	25
WTFC 08G04		G1/2"	12,0	30,9	24	32,8	25
WTFC 10G01	10	G1/8"	7,0	27,7	17	28,5	50
WTFC 10G02		G1/4"	9,0	29,7	17	27,0	50
WTFC 10G03		G3/8"	10,0	30,7	19	24,6	25
WTFC 10G04		G1/2"	12,0	32,7	24	38,5	25
WTFC 12G02	12	G1/4"	9,0	32,9	20	44,2	20
WTFC 12G03		G3/8"	10,0	33,9	20	35,9	20
WTFC 12G04		G1/2"	12,0	35,9	24	34,2	10

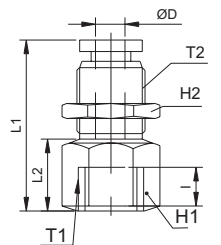


passaparte femmina cilindrico BSPP nichelato • bulkhead female connector BSPP thread nickel plated

WTMF



CODE	ØD	T1	T2	I	L1	L2	H1(Hex)	H2(Hex)	Peso Weight(g)	
WTMF 04G01	4	G1/8"	M12	7	23,3	9,5	14	14	15,5	50
WTMF 04G02		G1/4"		9	25,4	11,6	17	14	20,4	25
WTMF 06G01	6	G1/8"	M14	7	24,2	7,0	17	17	26,3	50
WTMF 06G02		G1/4"		9	29,2	12,0	17	17	26,5	50
WTMF 06G03		G3/8"		10	30,2	13,0	19	17	35,1	25
WTMF 08G01	8	G1/8"	M16	7	27,4	5,0	19	19	32,0	25
WTMF 08G02		G1/4"		9	34,4	12,0	19	19	42,4	25
WTMF 08G03		G3/8"		10	34,4	13,0	19	19	42,4	25
WTMF 08G04		G1/2"		12	36,4	15,0	24	19	47,7	20
WTMF 10G01	10	G1/8"	M20	7	28,4	7,7	21	24	52,8	25
WTMF 10G02		G1/4"		9	30,4	9,7	21	24	53,5	25
WTMF 10G03		G3/8"		10	33,7	13,0	21	24	53,8	20
WTMF 10G04		G1/2"		12	35,7	15,0	24	24	58,8	10
WTMF 12G02	12	G1/4"	M22	9	33,5	9,1	24	27	68,2	20
WTMF 12G03		G3/8"		10	34,4	10,0	24	27	62,7	20
WTMF 12G04		G1/2"		12	39,4	15,0	24	27	62,3	10

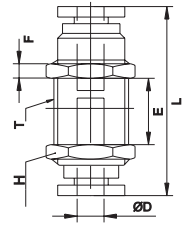


INNESTI RAPIDI IN TECNOPOLIMERO • plastic push-in fittings

passaparete nichelato • bulkhead connector nickel plated

WTMM


CODE	ØD	T	E	L	F	H(Hex)	Peso Weight(g)	
WTMM 0400	4	M12	9,7	30,1	3,5	14	15,4	100
WTMM 0600	6	M14	7,5	31,8	4,0	17	21,4	100
WTMM 0800	8	M16	6,8	35,3	4,5	19	26,8	50
WTMM 1000	10	M20	11,5	39,0	5,0	24	52,7	50
WTMM 1200	12	M22	12,8	45,3	5,0	27	59,8	25



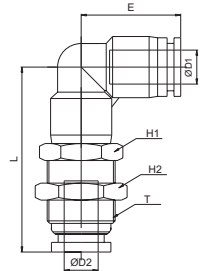
7

INNESTI RAPIDI • push-in fittings

gomito passaparete nichelato • bulkhead elbow nickel plated

WTLM

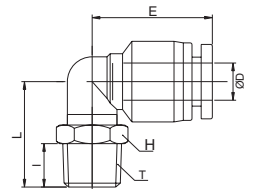

CODE	ØD1	ØD2	T	L	E	H1(Hex)	H2(Hex)	Peso Weight(g)	
WTLM 04	4	4	M12x1,0	28,5	17,5	14	14	15,0	50
WTLM 06	6	6	M14x1,0	34,8	19,0	17	17	27,2	50
WTLM 08	8	8	M16x1,0	43,4	22,8	17	19	38,0	50
WTLM 10	10	10	M20x1,0	45,5	26,3	21	24	55,0	25
WTLM 12	12	12	M22x1,0	51,6	29,6	24	27	85,0	20



gomito maschio compatto conico BSPT nichelato • short male elbow BSPT thread nickel plated

WTSL

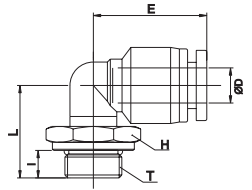

CODE	ØD	T	I	L	E	H(Hex)	Peso Weight(g)	
WTSL 04R01	4	R1/8"	7,0	16,0	17,5	10	5,8	100
WTSL 06R01	6	R1/8"	7,0	17,0	19,0	10	6,4	100
WTSL 06R02	6	R1/4"	9,5	20,5	19,0	14	12,4	100
WTSL 08R01	8	R1/8"	7,0	21,3	22,8	12	11,5	50
WTSL 08R02	8	R1/4"	9,5	21,5	22,8	14	13,3	50
WTSL 08R03	8	R3/8"	10,5	23,0	22,8	17	20,3	50
WTSL 10R02	10	R1/4"	9,5	26,0	26,3	14	18,4	25
WTSL 10R03	10	R3/8"	10,5	25,0	26,3	17	21,9	25



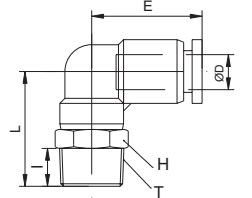
INNESTI RAPIDI IN TECNOPOLIMERO • plastic push-in fittings

 gomito maschio compatto cilindrico BSPP e metrico nichelato • *short male elbow BSPP & metric thread nickel plated*
WTSL

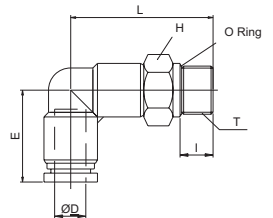

CODE	ØD	T	I	L	E	H(Hex)	Peso Weight(g)
WTSL 04M5	4	M5x0,8P	3,8	15,3	17,5	8	5,2
WTSL 04G01		G1/8"	4,8	14,8	17,5	14	7,6
WTSL 06M5	6	M5x0,8P	3,8	15,3	19,0	8	5,8
WTSL 06G01		G1/8"	4,8	15,8	19,0	14	8,3
WTSL 06G02		G1/4"	5,5	17,0	19,0	17	13,3
WTSL 08G01	8	G1/8"	4,8	20,0	22,8	14	11,9
WTSL 08G02		G1/4"	5,5	18,0	22,8	17	13,8
WTSL 08G03		G3/8"	6,5	19,5	22,8	20	21,2
WTSL 10G02	10	G1/4"	5,5	23,1	26,3	17	21,3
WTSL 10G03		G3/8"	6,5	21,5	26,3	20	24,3


 gomito maschio girevole conico BSPT nichelato • *swivel male elbow BSPT thread nickel plated*
WTL


CODE	ØD	T	I	L	E	H(Hex)	Peso Weight(g)
WTL 04R01	4	R1/8"	7,0	23,5	17,5	10	8,1
WTL 04R02		R1/4"	9,5	27,0	17,5	14	13,9
WTL 06R01	6	R1/8"	7,0	25,2	19,0	12	11,5
WTL 06R02		R1/4"	9,5	28,2	19,0	14	16,5
WTL 06R03		R3/8"	10,5	29,7	19,0	17	22,6
WTL 06R04		R1/2"	13,5	33,2	19,0	21	35,9
WTL 08R01	8	R1/8"	7,0	29,0	22,8	14	17,6
WTL 08R02		R1/4"	9,5	31,5	22,8	14	17,7
WTL 08R03		R3/8"	10,5	33,0	22,8	17	25,3
WTL 08R04		R1/2"	13,5	36,5	22,8	21	38,2
WTL 10R01	10	R1/8"	7,0	33,8	26,3	17	30,7
WTL 10R02		R1/4"	9,5	36,3	26,3	17	31,4
WTL 10R03		R3/8"	10,5	37,3	26,3	17	30,8
WTL 10R04		R1/2"	13,5	40,8	26,3	21	47,3
WTL 12R02	12	R1/4"	9,5	38,5	29,6	21	44,3
WTL 12R03		R3/8"	10,5	39,5	29,6	21	46,7
WTL 12R04		R1/2"	13,5	42,5	29,6	21	51,2
WTL 16R03	16	R3/8"	10,5	43,0	33,0	24	67,6
WTL 16R04		R1/2"	13,5	46,0	33,0	24	72,8


 gomito maschio girevole cilindrico BSPP & metrico nichelato • *swivel male elbow BSPP & metric thread nickel plated*

CODE	ØD	T	I	L	E	H(Hex)	Peso Weight(g)
WTL 04M5	4	M5x0,8P	3,8	17,3	17,5	8	5,1
WTL 04M6		M6x1,0P	4,5	18,0	17,5	8	5,3
WTL 04G01		G1/8"	5,0	24,0	17,5	14	11,8
WTL 04G02		G1/4"	5,8	25,3	17,5	17	17,9
WTL 06M5	6	M5x0,8P	3,8	17,3	19,0	8	5,8
WTL 06M6		M6x1,0P	4,5	18,0	19,0	8	6,0
WTL 06G01		G1/8"	5,0	25,2	19,0	14	14,6
WTL 06G02		G1/4"	5,8	26,5	19,0	17	17,5
WTL 06G03		G3/8"	6,8	28,0	19,0	20	24,4
WTL 06G04		G1/2"	8,0	29,2	19,0	24	38,4
WTL 08G01	8	G1/8"	5,0	28,5	22,8	14	17,5
WTL 08G02		G1/4"	5,8	29,8	22,8	17	20,5
WTL 08G03		G3/8"	6,8	31,3	22,8	20	26,6
WTL 08G04		G1/2"	8,0	32,5	22,8	24	36,8
WTL 10G01	10	G1/8"	5,0	33,3	26,3	17	31,2
WTL 10G02		G1/4"	5,8	34,1	26,3	17	30,5
WTL 10G03		G3/8"	6,8	35,6	26,3	20	34,6
WTL 10G04		G1/2"	8,0	37,8	26,3	24	47,3
WTL 12G02	12	G1/4"	5,8	36,8	29,6	21	43,9
WTL 12G03		G3/8"	6,8	37,8	29,6	21	44,5
WTL 12G04		G1/2"	8,0	39,5	29,6	24	51,8
WTL 14G03	14	G3/8"	8,0	40,8	33,0	21	52,0
WTL 14G04		G1/2"	9,3	42,0	33,0	24	61,0
WTL 16G03	16	G3/8"	7,5	40,8	33,0	24	64,0
WTL 16G04		G1/2"	8,0	42,0	33,0	24	66,5



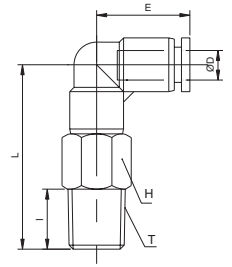
INNESTI RAPIDI IN TECNOPOLIMERO • plastic push-in fittings

gomito prolungato girevole conico BSPT nichelato • long swivel male elbow BSPT thread nickel plated

WTLL



CODE	ØD	T	I	L	E	H(Hex)	Peso Weight(g)
WTLL 04R01	4	R1/8"	7,0	35,5	17,5	10	14,2
WTLL 04R02		R1/4"	9,5	39,0	17,5	14	26,2
WTLL 06R01	6	R1/8"	7,0	39,2	19,0	12	22,0
WTLL 06R02		R1/4"	9,5	42,2	19,0	14	29,2
WTLL 06R03		R3/8"	10,5	43,7	19,0	17	39,4
WTLL 06R04		R1/2"	13,5	47,2	19,0	21	62,9
WTLL 08R01	8	R1/8"	7,0	44,3	22,8	14	34,6
WTLL 08R02		R1/4"	9,5	46,8	22,8	14	33,1
WTLL 08R03		R3/8"	10,5	48,3	22,8	17	45,6
WTLL 08R04		R1/2"	13,5	51,8	22,8	21	70,1
WTLL 10R01	10	R1/8"	7,0	53,8	26,3	17	61,2
WTLL 10R02		R1/4"	9,5	56,3	26,3	17	62,5
WTLL 10R03		R3/8"	10,5	57,3	26,3	17	56,7
WTLL 10R04		R1/2"	13,5	60,8	26,3	21	87,2
WTLL 12R02	12	R1/4"	9,5	61,5	29,6	21	86,7
WTLL 12R03		R3/8"	10,5	62,5	29,6	21	100,7
WTLL 12R04		R1/2"	13,5	65,5	29,6	21	89,7

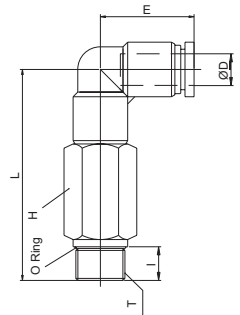


9 INNESTI RAPIDI • push-in fittings

gomito prolungato girevole cilindrico BSPP & metrico nichelato • long swivel male elbow BSPP & metric thread nickel plated



CODE	ØD	T	I	L	E	H(Hex)	Peso Weight(g)
WTLL 04M5	4	M5x0,8P	3,8	29,3	17,5	8	10,4
WTLL 04M6		M6x1,0P	4,5	30,0	17,5	8	10,8
WTLL 04G01		G1/8"	5,0	36,0	17,5	14	25,9
WTLL 04G02		G1/4"	5,8	37,3	17,5	17	26,6
WTLL 06M5	6	M5x0,8P	3,8	31,3	19,0	8	11,4
WTLL 06M6		M6x1,0P	4,5	32,0	19,0	8	11,8
WTLL 06G01		G1/8"	5,0	39,2	19,0	14	30,5
WTLL 06G02		G1/4"	5,8	40,5	19,0	17	43,3
WTLL 06G03	8	G3/8"	6,8	42,0	19,0	20	57,0
WTLL 06G04		G1/2"	8,0	43,2	19,0	24	91,5
WTLL 08G01		G1/8"	5,0	43,8	22,8	14	35,4
WTLL 08G02		G1/4"	5,8	45,1	22,8	17	48,0
WTLL 08G03	10	G3/8"	6,8	46,6	22,8	20	60,3
WTLL 08G04		G1/2"	8,0	47,8	22,8	24	93,7
WTLL 10G01		G1/8"	5,0	53,3	26,3	17	61,8
WTLL 10G02		G1/4"	5,8	54,1	26,3	17	68,7
WTLL 10G03	12	G3/8"	6,8	55,6	26,3	20	78,7
WTLL 10G04		G1/2"	8,0	57,8	26,3	24	105,8
WTLL 12G02		G1/4"	5,8	59,8	29,6	21	98,1
WTLL 12G03		G3/8"	6,8	60,8	29,6	21	101,9
WTLL 12G04	G1/2"	8,0	62,5	29,6	24	124,3	

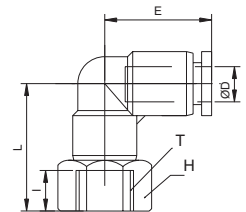


gomito femmina girevole cilindrico BSPP nichelato • swivel female elbow BSPP thread nickel plated

WTLF



CODE	ØD	T	I	L	E	H(Hex)	Peso Weight(g)
WTLF 04M5	4	M5x0,8P	4,5	19,5	17,5	10	7,4
WTLF 04M6		M6x1,0P	5,0	20,0	17,5	10	7,2
WTLF 04G01		G1/8"	7,0	23,0	17,5	14	13,9
WTLF 04G02		G1/4"	9,0	25,0	17,5	17	18,2
WTLF 06M5	6	M5x0,8P	4,5	20,7	19,0	12	10,6
WTLF 06M6		M6x1,0P	5,0	21,2	19,0	12	10,4
WTLF 06G01		G1/8"	7,0	24,4	19,0	14	16,4
WTLF 06G02		G1/4"	9,0	26,4	19,0	17	21,3
WTLF 06G03	8	G3/8"	10,0	27,7	19,0	19	30,0
WTLF 08G01		G1/8"	7,0	27,3	22,8	14	19,4
WTLF 08G02		G1/4"	9,0	29,5	22,8	17	24,1
WTLF 08G03		G3/8"	10,0	31,0	22,8	19	32,4
WTLF 08G04	10	G1/2"	12,0	33,0	22,8	24	41,6
WTLF 10G01		G1/8"	7,0	27,3	26,3	17	27,7
WTLF 10G02		G1/4"	9,0	33,8	26,3	17	33,8
WTLF 10G03		G3/8"	10,0	35,3	26,3	19	34,3
WTLF 10G04	12	G1/2"	12,0	37,8	26,3	24	51,2
WTLF 12G02		G1/4"	9,0	29,0	29,6	21	36,7
WTLF 12G03		G3/8"	10,0	37,0	29,6	21	49,2
WTLF 12G04		G1/2"	12,0	39,5	29,6	24	54,7

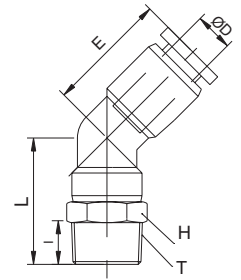


INNESTI RAPIDI IN TECNOPOLIMERO • plastic push-in fittings

gomito maschio 45° conico BSPT nichelato • male elbow 45° BSPT thread nickel plated

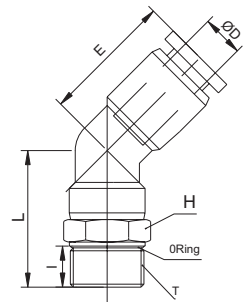
WTLH


CODE	ØD	T	I	L	E	H(Hex)	Peso Weight(g)	
WTLH 04R01	4	R1/8"	7,0	22,2	16,2	10	8,0	100
WTLH 04R02		R1/4"	9,5	25,7	16,2	14	13,8	50
WTLH 06R01	6	R1/8"	7,0	23,9	17,7	12	11,0	100
WTLH 06R02		R1/4"	9,5	26,9	17,7	14	16,0	100
WTLH 06R03		R3/8"	10,5	28,4	17,7	17	22,2	50
WTLH 06R04		R1/2"	13,5	31,9	17,7	21	35,4	25
WTLH 08R01	8	R1/8"	7,0	27,1	20,9	14	17,3	50
WTLH 08R02		R1/4"	9,5	29,6	20,9	14	17,4	50
WTLH 08R03		R3/8"	10,5	31,1	20,9	17	25,0	50
WTLH 08R04		R1/2"	13,5	34,6	20,9	21	37,9	25
WTLH 10R01	10	R1/8"	7,0	29,7	22,2	17	30,0	50
WTLH 10R02		R1/4"	9,5	32,2	22,2	17	30,7	25
WTLH 10R03		R3/8"	10,5	33,2	22,2	17	30,1	25
WTLH 10R04		R1/2"	13,5	36,7	22,2	21	46,6	25
WTLH 12R02	12	R1/4"	9,5	35,2	26,3	21	42,6	25
WTLH 12R03		R3/8"	10,5	36,2	26,3	21	45,0	25
WTLH 12R04		R1/2"	13,5	39,2	26,3	21	49,5	25



gomito maschio 45° cilindrico BSPP & metrico nichelato • male elbow 45° BSPP & metric thread nickel plated

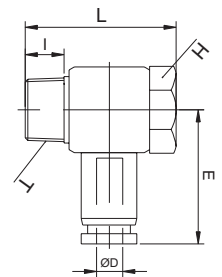
CODE	ØD	T	I	L	E	H(Hex)	Peso Weight(g)	
WTLH 04M5	4	M5x0,8P	3,8	20,0	16,2	10	8,1	100
WTLH 04M6		M6x1,0P	4,5	20,7	16,2	10	8,3	100
WTLH 04G01		G1/8"	5,0	22,7	16,2	14	11,7	100
WTLH 04G02		G1/4"	5,8	24,0	16,2	17	17,8	50
WTLH 06M5	6	M5x0,8P	3,8	21,7	17,7	12	10,8	100
WTLH 06M6		M6x1,0P	4,5	22,4	17,7	12	11,5	100
WTLH 06G01		G1/8"	5,0	23,9	17,7	14	14,2	100
WTLH 06G02		G1/4"	5,8	25,2	17,7	17	17,5	100
WTLH 06G03	8	G3/8"	6,8	26,7	17,7	20	24,0	50
WTLH 06G04		G1/2"	8,0	27,9	17,7	24	38,0	25
WTLH 08G01		G1/8"	5,0	26,6	20,9	14	17,2	50
WTLH 08G02		G1/4"	5,8	27,9	20,9	17	20,2	50
WTLH 08G03	10	G3/8"	6,8	29,4	20,9	20	26,3	50
WTLH 08G04		G1/2"	8,0	30,6	20,9	24	36,5	25
WTLH 10G01		G1/8"	5,0	29,2	22,2	17	30,6	50
WTLH 10G02		G1/4"	5,8	30,0	22,2	17	29,9	25
WTLH 10G03	12	G3/8"	6,8	31,5	22,2	20	34,0	25
WTLH 10G04		G1/2"	8,0	33,7	22,2	24	46,7	25
WTLH 12G02		G1/4"	5,8	33,5	26,3	21	42,4	25
WTLH 12G03		G3/8"	6,8	34,5	26,3	21	43,0	25
WTLH 12G04	G1/2"	8,0	36,2	26,3	24	50,3	25	



gomito a banjo maschio girevole conico BSPT nichelato • swivel male banjo elbow BSPT thread nickel plated

WTH


CODE	ØD	T	I	L	E	H(Hex)	Peso Weight(g)	
WTH 04R01	4	R1/8"	7,0	23,0	22,3	10	10,5	100
WTH 04R02		R1/4"	9,5	26,3	24,1	14	21,9	50
WTH 06R01	6	R1/8"	7,0	23,0	23,1	10	11,0	100
WTH 06R02		R1/4"	9,5	26,3	25,1	14	22,5	50
WTH 06R03		R3/8"	10,5	31,9	26,8	19	37,8	25
WTH 08R01		R1/8"	7,0	23,0	25,6	10	11,8	50
WTH 08R02	8	R1/4"	9,5	26,3	28,6	14	23,3	50
WTH 08R03		R3/8"	10,5	31,9	29,6	19	38,4	25
WTH 08R04		R1/2"	13,5	38,6	32,6	24	75,4	20
WTH 10R02		R1/4"	9,5	26,3	31,0	14	26,7	25
WTH 10R03	10	R3/8"	10,5	31,9	31,6	19	41,8	25
WTH 10R04		R1/2"	13,5	38,6	34,6	24	78,8	20
WTH 12R02		R1/4"	9,5	26,3	33,5	14	28,2	25
WTH 12R03		12	R3/8"	10,5	31,9	35,6	19	43,4
WTH 12R04	R1/2"		13,5	38,6	36,6	24	80,3	10



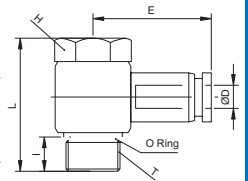
INNESTI RAPIDI IN TECNOPOLIMERO • plastic push-in fittings

gomito a banjo maschio cilindrico BSPP & metrico nichelato • swivel male banjo elbow BSPP & metric thread nickel plated

WTH



CODE	ØD	T	I	L	E	H(Hex)	Peso Weight(g)	
WTH 04M5	4	M5x0,8P	4,0	18,0	20,0	8	6,6	100
WTH 04M6		M6x1,0P	4,5	18,5	20,0	8	11,8	100
WTH 04G01		G1/8"	5,0	22,5	22,3	10	11,5	100
WTH 06M5	6	M5x0,8P	4,0	18,0	21,9	8	7,2	100
WTH 06M6		M6x1,0P	4,5	18,5	21,9	8	12,4	100
WTH 06G01		G1/8"	5,0	22,5	23,1	10	12,0	100
WTH 06G02		G1/4"	5,8	26,2	25,1	14	23,0	50
WTH 08G01	8	G1/8"	5,0	22,5	25,6	10	12,8	50
WTH 08G02		G1/4"	5,8	26,2	28,6	14	23,8	50
WTH 08G03		G3/8"	6,8	31,7	29,6	19	40,9	25
WTH 10G02	10	G1/4"	5,8	26,2	31,1	14	27,2	25
WTH 10G03		G3/8"	6,8	31,7	31,6	19	44,3	25
WTH 12G03	12	G3/8"	6,8	31,7	35,6	19	45,9	25
WTH 12G04		G1/2"	8,0	37,1	36,6	24	79,3	10

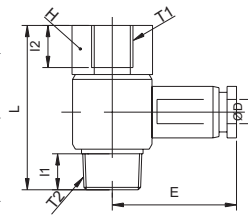


gomito a banjo femmina girevole conico BSPT nichelato • swivel female banjo elbow BSPT thread

WTHF



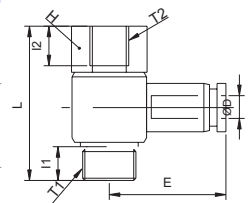
CODE	ØD	T1	T2	I1	I2	L	E	H(Hex)	Peso Weight(g)	
WTHF 04R01	4	G1/8"	R1/8"	7,0	7,0	29,0	22,3	14	16,4	100
WTHF 04R02		G1/4"	R1/4"	9,5	9,0	33,3	24,1	17	27,4	50
WTHF 06R01	6	G1/8"	R1/8"	7,0	7,0	29,0	23,1	14	17,0	100
WTHF 06R02		G1/4"	R1/4"	9,5	9,0	33,3	25,1	17	28,0	50
WTHF 06R03		G3/8"	R3/8"	10,5	10,0	39,9	26,8	19	44,8	25
WTHF 08R01	8	G1/8"	R1/8"	7,0	7,0	29,0	25,6	14	17,8	50
WTHF 08R02		G1/4"	R1/4"	9,5	9,0	33,3	28,6	17	28,8	50
WTHF 08R03		G3/8"	R3/8"	10,5	10,0	39,9	29,6	19	45,4	25
WTHF 08R04		G1/2"	R1/2"	13,5	12,0	46,5	32,6	24	71,9	20
WTHF 10R02	10	G1/4"	R1/4"	9,5	9,0	33,3	31,0	17	32,2	25
WTHF 10R03		G3/8"	R3/8"	10,5	10,0	39,9	31,6	19	48,8	25
WTHF 10R04		G1/2"	R1/2"	13,5	12,0	46,5	34,6	24	75,3	20
WTHF 12R02	12	G1/4"	R1/4"	9,5	9,0	33,3	33,5	17	33,7	20
WTHF 12R03		G3/8"	R3/8"	10,5	10,0	39,9	35,6	19	50,4	20
WTHF 12R04		G1/2"	R1/2"	13,5	12,0	46,5	36,6	24	76,8	10



gomito a banjo femmina girevole cilindrico BSPP & metrico nichelato • swivel female banjo elbow BSPP & metric thread nickel plated



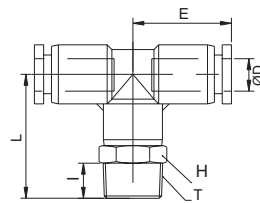
CODE	ØD	T1	T2	I1	I2	L	E	H(Hex)	Peso Weight(g)	
WTHF 04M5	4	M5x0,8P	M5x0,8P	4,0	5,5	20,5	20,0	10	8,3	100
WTHF 04M6		M6x1,0P	M6x1,0P	4,5	6,0	21,0	20,0	10	8,3	100
WTHF 04G01		G1/8"	G1/8"	5,7	7,0	29,0	22,3	14	18,4	100
WTHF 06M5	6	M5x0,8P	M5x0,8P	4,0	5,5	20,5	21,9	10	8,9	100
WTHF 06M6		M6x1,0P	M6x1,0P	4,5	7,0	30,0	23,1	14	8,9	100
WTHF 06G01		G1/8"	G1/8"	5,5	7,0	30,0	23,1	14	19,0	100
WTHF 06G02		G1/4"	G1/4"	6,5	9,0	33,7	25,1	17	30,5	50
WTHF 08G01	8	G1/8"	G1/8"	5,5	7,0	30,0	25,6	14	19,8	50
WTHF 08G02		G1/4"	G1/4"	6,5	9,0	33,7	28,6	17	31,3	50
WTHF 08G03		G3/8"	G3/8"	7,5	10,0	39,7	29,6	19	47,9	25
WTHF 10G02	10	G1/4"	G1/4"	6,5	9,0	33,7	31,1	17	34,7	25
WTHF 10G03		G3/8"	G3/8"	7,5	10,0	39,7	31,6	19	51,3	25
WTHF 12G03	12	G3/8"	G3/8"	7,5	10,0	39,7	35,6	19	52,9	20
WTHF 12G04		G1/2"	G1/2"	9,0	12,0	45,0	36,6	24	77,3	10



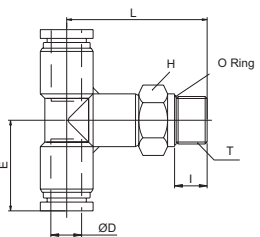
INNESTI RAPIDI IN TECNOPOLIMERO • plastic push-in fittings

 T centrale maschio girevole conico BSPT nichelato • *swivel male central tee BSPT thread nickel plated*
WTT

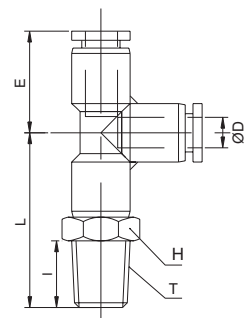

CODE	ØD	T	I	L	E	H(Hex)	Peso Weight(g)	
WTT 04R01	4	R1/8"	7,0	24,5	18,5	10	10,5	100
WTT 04R02		R1/4"	9,5	28,0	18,5	14	16,3	50
WTT 06R01	6	R1/8"	7,0	25,5	19,3	12	14,1	50
WTT 06R02		R1/4"	9,5	28,5	19,3	14	19,1	50
WTT 06R03		R3/8"	10,5	30,0	19,3	17	25,2	25
WTT 06R04		R1/2"	13,5	33,5	19,3	21	38,5	25
WTT 08R01	8	R1/8"	7,0	29,0	22,8	14	20,9	50
WTT 08R02		R1/4"	9,5	31,5	22,8	14	21,0	50
WTT 08R03		R3/8"	10,5	32,0	22,8	17	28,6	25
WTT 08R04		R1/2"	13,5	36,5	22,8	21	41,5	25
WTT 10R01	10	R1/8"	7,0	34,5	27,0	17	37,9	25
WTT 10R02		R1/4"	9,5	37,0	27,0	17	38,6	25
WTT 10R03		R3/8"	10,5	38,0	27,0	17	38,0	25
WTT 10R04		R1/2"	13,5	41,5	27,0	21	54,5	20
WTT 12R02	12	R1/4"	9,5	38,5	29,6	21	52,8	20
WTT 12R03		R3/8"	10,5	39,5	29,6	21	55,2	20
WTT 12R04		R1/2"	13,5	42,5	29,6	21	59,7	10
WTT 16R03		16	R3/8"	10,5	43,0	33,0	24	81,0
WTT 16R04	R1/2"		13,5	46,0	33,0	24	85,5	10


 T centrale maschio girevole cilindrico BSPP & metrico nichelato • *swivel male central tee BSPP & metric thread nickel plated*

CODE	ØD	T	I	L	E	H(Hex)	Peso Weight(g)	
WTT 04M5	4	M5x0,8P	3,8	22,3	18,5	10	10,6	100
WTT 04M6		M6x1,0P	4,5	23,0	18,5	10	10,8	100
WTT 04G01		G1/8"	5,0	25,0	18,5	14	14,2	100
WTT 04G02		G1/4"	5,8	26,3	18,5	17	20,3	50
WTT 06M5	6	M5x0,8P	3,8	23,3	19,3	12	13,9	50
WTT 06M6		M6x1,0P	4,5	24,0	19,3	12	14,6	50
WTT 06G01		G1/8"	5,0	25,5	19,3	14	17,2	50
WTT 06G02		G1/4"	5,8	26,8	19,3	17	20,5	50
WTT 06G03	8	G3/8"	6,8	28,3	19,3	20	27,0	25
WTT 06G04		G1/2"	8,0	29,5	19,3	24	41,0	25
WTT 08G01		G1/8"	5,0	28,5	22,8	14	20,8	50
WTT 08G02		G1/4"	5,8	29,8	22,8	17	23,8	50
WTT 08G03	10	G3/8"	6,8	31,3	22,8	20	29,9	25
WTT 08G04		G1/2"	8,0	32,5	22,8	24	40,1	25
WTT 10G01		G1/8"	5,0	34,0	27,0	17	38,4	25
WTT 10G02		G1/4"	5,8	34,8	27,0	17	37,7	25
WTT 10G03	12	G3/8"	6,8	36,3	27,0	20	41,8	25
WTT 10G04		G1/2"	8,0	38,5	27,0	24	54,5	20
WTT 12G02		G1/4"	5,8	36,8	29,6	21	52,4	20
WTT 12G03		G3/8"	6,8	37,8	29,6	21	53,0	20
WTT 12G04	14	G1/2"	8,0	39,5	29,6	24	60,3	10
WTT 14G03		G3/8"	6,8	39,8	31,7	21	61,0	10
WTT 14G04		G1/2"	8,0	41,5	31,7	24	69,0	10
WTT 16G03		16	G3/8"	6,8	40,8	33,0	24	76,6
WTT 16G04	G1/2"		8,0	42,0	33,0	24	79,4	10


 T laterale maschio girevole conico BSPT nichelato • *swivel lateral male tee BSPT thread nickel plated*
WTST


CODE	ØD	T	I	L	E	H(Hex)	Peso Weight(g)	
WTST 04R01	4	R1/8"	7,0	24,5	18,5	10	10,5	100
WTST 04R02		R1/4"	9,5	28,0	18,5	14	16,3	50
WTST 06R01	6	R1/8"	7,0	25,5	19,3	12	14,1	50
WTST 06R02		R1/4"	9,5	28,5	19,3	14	19,1	50
WTST 06R03		R3/8"	10,5	30,0	19,3	17	25,2	25
WTST 06R04		R1/2"	13,5	33,5	19,3	21	38,5	25
WTST 08R01	8	R1/8"	7,0	29,0	22,8	14	20,9	50
WTST 08R02		R1/4"	9,5	31,5	22,8	14	21,0	50
WTST 08R03		R3/8"	10,5	32,3	22,8	17	28,6	25
WTST 08R04		R1/2"	13,5	36,5	22,8	21	41,5	25
WTST 10R01	10	R1/8"	7,0	34,5	27,0	17	37,9	25
WTST 10R02		R1/4"	9,5	37,0	27,0	17	38,6	25
WTST 10R03		R3/8"	10,5	38,0	27,0	17	38,0	25
WTST 10R04		R1/2"	13,5	41,5	27,0	21	54,5	20
WTST 12R02	12	R1/4"	9,5	38,5	29,6	21	52,8	20
WTST 12R03		R3/8"	10,5	39,5	29,6	21	55,2	20
WTST 12R04		R1/2"	13,5	42,5	29,6	21	59,7	10



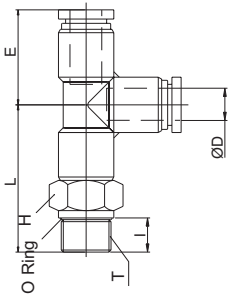
INNESTI RAPIDI IN TECNOPOLIMERO • plastic push-in fittings

T centrale maschio girevole cilindrico BSPP & metrico nichelato • swivel male central tee BSPP & metric thread nickel plated

WTST



CODE	ØD	T	I	L	E	H(Hex)	Peso Weight(g)
WTST 04M5	4	M5x0,8P	3,8	22,3	18,5	10	10,6
WTST 04M6		M6x1,0P	4,5	23,0	18,5	10	10,8
WTST 04G01		G1/8"	5,0	25,0	18,5	14	14,2
WTST 04G02		G1/4"	5,8	26,3	18,5	17	20,3
WTST 06M5	6	M5x0,8P	3,8	23,3	19,3	12	13,9
WTST 06M6		M6x1,0P	4,5	24,0	19,3	12	14,6
WTST 06G01		G1/8"	5,0	25,5	19,3	14	17,2
WTST 06G02		G1/4"	5,8	26,8	19,3	17	20,5
WTST 06G03	G3/8"	6,8	28,3	19,3	20	27,0	
WTST 06G04	G1/2"	8,0	29,5	19,3	24	41,0	
WTST 08G01	8	G1/8"	5,0	28,5	22,8	14	20,8
WTST 08G02		G1/4"	5,8	29,8	22,8	17	23,8
WTST 08G03		G3/8"	6,8	31,3	22,8	20	29,9
WTST 08G04		G1/2"	8,0	32,5	22,8	24	40,1
WTST 10G01	10	G1/8"	5,0	34,0	27,0	17	38,4
WTST 10G02		G1/4"	5,8	34,8	27,0	17	37,7
WTST 10G03		G3/8"	6,8	36,3	27,0	20	41,8
WTST 10G04		G1/2"	8,0	38,5	27,0	24	54,5
WTST 12G02	12	G1/4"	5,8	36,8	29,6	21	52,4
WTST 12G03		G3/8"	6,8	37,8	29,6	21	53,0
WTST 12G04		G1/2"	8,0	39,5	29,6	24	60,3

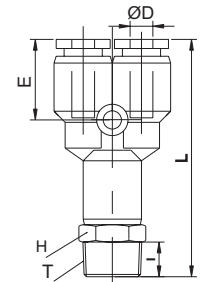


Y maschio girevole conico BSPT nichelato • swivel male Y BSPT thread nickel plated

WTWT



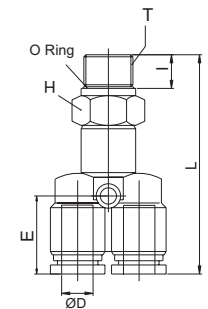
CODE	ØD	T	I	L	E	H(Hex)	Peso Weight(g)
WTWT 04R01	4	R1/8"	7,0	41,5	14,0	10	10,7
WTWT 04R02		R1/4"	9,5	45,0	14,0	14	16,6
WTWT 06R01	6	R1/8"	7,0	43,3	14,8	12	14,6
WTWT 06R02		R1/4"	9,5	46,3	14,8	14	19,6
WTWT 06R03		R3/8"	10,5	47,8	14,8	17	25,8
WTWT 06R04		R1/2"	13,5	51,3	14,8	21	39,0
WTWT 08R01	8	R1/8"	7,0	46,6	18,2	14	21,0
WTWT 08R02		R1/4"	9,5	49,1	18,2	14	21,1
WTWT 08R03		R3/8"	10,5	50,6	18,2	17	28,7
WTWT 08R04		R1/2"	13,5	54,1	18,2	21	41,6
WTWT 10R01	10	R1/8"	7,0	54,6	19,5	17	38,3
WTWT 10R02		R1/4"	9,5	57,1	19,5	17	39,0
WTWT 10R03		R3/8"	10,5	58,1	19,5	17	38,4
WTWT 10R04		R1/2"	13,5	61,6	19,5	21	54,9
WTWT 12R02	12	R1/4"	9,5	62,1	21,6	21	53,6
WTWT 12R03		R3/8"	10,5	63,1	21,6	21	46,0
WTWT 12R04		R1/2"	13,5	66,1	21,6	21	60,5



Y maschio girevole cilindrico BSPP & metrico • swivel male Y BSPP & metric thread nickel plated



CODE	ØD	T	I	L	E	H(Hex)	Peso Weight(g)
WTWT 04M5	4	M5x0,8P	3,8	39,3	14,0	10	10,8
WTWT 04M6		M6x1,0P	4,5	40,0	14,0	10	11,0
WTWT 04G01		G1/8"	5,0	42,0	14,0	14	14,5
WTWT 04G02 new		G1/4"	5,8	43,3	14,0	14	20,6
WTWT 06M5	6	M5x0,8P	3,8	41,1	14,8	12	14,5
WTWT 06M6		M6x1,0P	4,5	41,8	14,8	12	15,1
WTWT 06G01		G1/8"	5,0	43,3	14,8	14	17,7
WTWT 06G02		G1/4"	5,8	44,6	14,8	17	21,0
WTWT 06G03 new	G3/8"	6,8	46,1	14,8	20	27,5	
WTWT 06G04 new	G1/2"	8,0	47,3	14,8	24	41,5	
WTWT 08G01	8	G1/8"	5,0	46,1	18,2	14	20,9
WTWT 08G02		G1/4"	5,8	47,4	18,2	17	23,9
WTWT 08G03		G3/8"	6,8	48,9	18,2	20	30,0
WTWT 08G04 new		G1/2"	8,0	50,1	18,2	24	40,2
WTWT 10G01	10	G1/8"	5,0	54,1	19,5	17	38,8
WTWT 10G02		G1/4"	5,8	54,9	19,5	17	38,1
WTWT 10G03		G3/8"	6,8	56,4	19,5	20	42,2
WTWT 10G04 new		G1/2"	8,0	58,6	19,5	24	54,9
WTWT 12G02 new	12	G1/4"	5,8	60,4	21,6	21	53,2
WTWT 12G03		G3/8"	6,8	61,4	21,6	21	53,8
WTWT 12G04		G1/2"	8,0	63,1	21,6	24	61,1



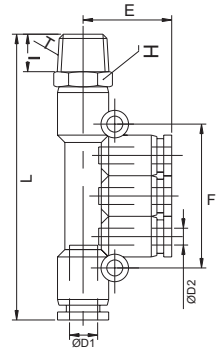
INNESTI RAPIDI IN TECNOPOLIMERO • plastic push-in fittings

multi T laterale girevole conico BSPT nichelato • swivel multi-tee lateral male connector BSPT thread

WTKD



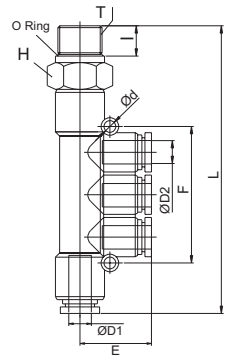
CODE	ØD1	ØD2	T	I	L	E	F	H(Hex)	Peso Weight(g)	
WTKD 0604R01	4	4	R1/8"	7,0	63,8	19,0	36,0	12	17,4	25
WTKD 0804R02	8	4	R1/4"	9,5	71,3	20,0	42,0	14	23,1	25
WTKD 0806R02		6	R1/4"	9,5	71,3	20,3	42,0	14	24,2	25
WTKD 1008R03	10	8	R3/8"	10,5	91,0	24,3	48,0	17	40,2	25



multi T laterale girevole cilindrico BSPP nichelato • swivel multi-tee lateral male connector BSPP thread nickel plated



CODE	ØD1	ØD2	Ød	T	I	L	E	F	H(Hex)	Peso Weight(g)	
WTKD 0604G01	4	4	3,2	G1/8"	5,0	63,8	19,0	36,0	14	20,5	25
WTKD 0804G02	8	4	3,2	G1/4"	5,8	69,6	20,0	42,0	17	26,0	25
WTKD 0806G02		6	3,2	G1/4"	5,8	69,6	20,3	42,0	17	27,0	25
WTKD 1008G03	10	8	4,2	G3/8"	6,8	89,3	24,3	48,0	20	44,0	25

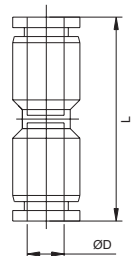


intermedio diritto • union connector

WTUC



CODE	ØD	L	Peso Weight(g)	
WTUC 0400	4	33,0	4,2	100
WTUC 0500	5	35,2	5,0	100
WTUC 0600	6	35,2	5,2	100
WTUC 0700	7	39,1	7,0	100
WTUC 0800	8	39,1	6,8	100
WTUC 0900	9	45,2	14,0	100
WTUC 1000	10	45,2	14,0	50
WTUC 1100	11	49,2	17,0	50
WTUC 1200	12	49,2	16,4	50
WTUC 1400	14	48,4	18,0	50
WTUC 1500	15	51,0	25,0	50
WTUC 1600	16	51,0	24,5	25

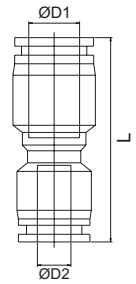


INNESTI RAPIDI IN TECNOPOLIMERO • plastic push-in fittings

intermedio diritto ridotto • reduced union connector

WTG

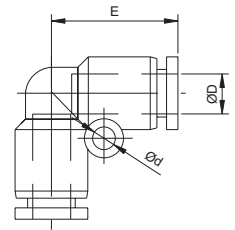

CODE	ØD1	ØD2	L	Peso Weight(g)	
WTG 0604	6	4	33,6	5,2	100
WTG 0805	8	5	35,5	6	100
WTG 0806	8	6	36,1	6,8	100
WTG 1007	10	7	43	10	50
WTG 1008	10	8	41,8	12,7	50
WTG 1207	12	7	45,5	13	50
WTG 1210	12	10	46,1	16,6	50
WTG 1410	14	10	46,7	17,0	25
WTG 1412	14	12	48,3	17,0	25
WTG 1612	16	12	50,1	26,0	25
WTG 1614	16	14	50	28	25



intermedio a gomito • union elbow

WTUL

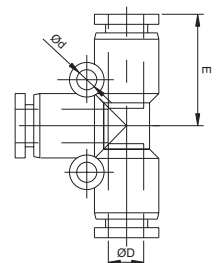

CODE	ØD1	Ød	E	Peso Weight(g)	
WTUL 0400	4	3,2	17,5	4,2	100
WTUL 0600	6	3,2	19,0	5,5	100
WTUL 0800	8	3,2	22,8	7,3	100
WTUL 1000	10	4,2	26,3	14,3	50
WTUL 1200	12	4,3	29,6	18,2	25
WTUL 1400	14	5,1	31,7	23,0	25
WTUL 1600	16	5,1	33,0	27,0	25



intermedio a T • union tee

WTUT

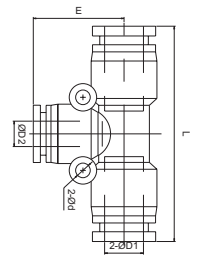

CODE	ØD1	Ød	E	Peso Weight(g)	
WTUT 0400	4	3,2	18,5	6,5	100
WTUT 0600	6	3,2	19,3	8,1	100
WTUT 0800	8	3,2	22,8	10,6	50
WTUT 1000	10	4,2	27,0	21,4	25
WTUT 1200	12	4,3	29,6	26,7	25
WTUT 1400	14	5,1	31,7	31,0	15
WTUT 1600	16	5,1	33,0	39,7	10



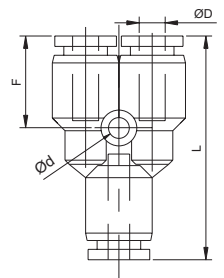
INNESTI RAPIDI IN TECNOPOLIMERO • plastic push-in fittings

 intermedio a T ridotto • *reduced union connector*
WTGT

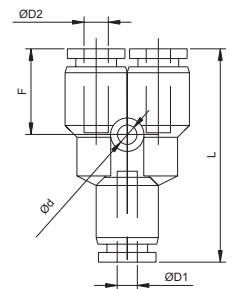

CODE	ØD1	ØD2	Ød	E	L	Peso Weight(g)	
WTGT 0604	6	4	3,2	19,5	38,6	8,1	100
WTGT 0806	8	6	3,2	20,3	45,5	10,6	50
WTGT 1008	10	8	4,2	24,8	54,0	20,2	25
WTGT 1210	12	10	4,2	28,5	59,2	26,9	25
WTGT 1612	16	12	5,1	32,1	66,0	41,9	10


 intermedio a Y • *union Y*
WTY


CODE	ØD1	Ød	L	F	Peso Weight(g)	
WTY 0400	4	3,2	35,5	14,0	6,8	100
WTY 0600	6	3,2	37,1	14,8	8,6	100
WTY 0800	8	3,2	40,4	18,2	10,7	50
WTY 1000	10	4,2	47,1	19,5	21,8	25
WTY 1200	12	4,2	53,2	21,6	27,5	25


 intermedio a Y ridotto • *reduced union Y*
WTW



CODE	ØD1	ØD2	Ød	L	F	Peso Weight(g)	
WTW 0604	6	4	3,2	36,8	14,5	9,2	100
WTW 0806	8	6	3,2	39,9	17,7	11,4	50
WTW 1008	10	8	4,2	47,9	20,3	21,8	25
WTW 1210	12	10	4,2	51,6	20,0	29,3	25

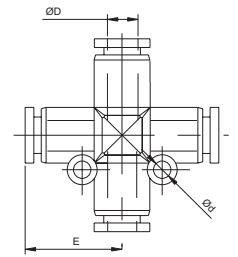


giunzione a croce • cross junction

WTZA




CODE	ØD1	Ød	E	Peso Weight(g)	
WTZA 0400	4	3,2	17,5	8,0	100
WTZA 0600	6	3,2	19,3	10,2	50
WTZA 0800	8	3,2	22,8	13,6	50
WTZA 1000	10	4,2	27,0	28,2	20
WTZA 1200	12	4,3	29,6	34,2	10

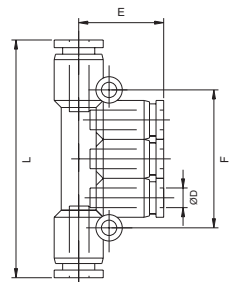


multi T • multi tee

WTK




CODE	ØD	L	F	E	Peso Weight(g)	
WTK 04	4	57,0	36	19,0	13,0	50
WTK 06	6	61,6	42	20,3	17,0	25
WTK 08	8	81,6	48	24,3	22,0	25

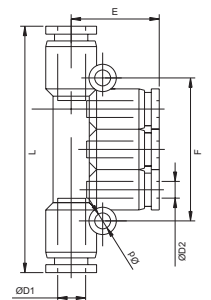


multi T ridotto • reduced multi tee

WTKG



CODE	ØD1	ØD2	Ød	L	E	F	Peso Weight(g)	
WTKG 0604	6	4	3,2	57,6	19,0	36	13,0	25
WTKG 0804	8	4	3,2	62,6	20,0	42	16,0	25
WTKG 0806	8	6	3,2	62,6	20,3	42	16,6	25
WTKG 1006	10	6	4,2	80,0	23,8	48	28,0	25
WTKG 1008	10	8	4,2	80,0	24,3	48	30,8	25

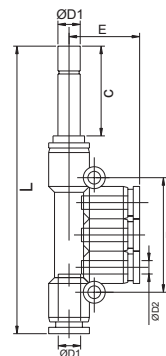


INNESTI RAPIDI IN TECNOPOLIMERO • plastic push-in fittings

multi T con codolo laterale • multi-tee union with lateral stem

WTKJ


CODE	ØD1	ØD2	L	E	F	C	Peso Weight(g)	
WTKY 0604	6	4	74,8	19,0	36,0	18,0	17,0	20
WTKY 0804	8	4	82,3	20,0	42,0	21,0	19,0	20
WTKY 0806		6	82,3	20,3	42,0	21,0	23,4	20
WTKY 1006		6	104,5	23,8	48,0	24,0	31,0	10
WTKY 1008	10	8	104,5	24,3	48,0	24,0	39,7	10



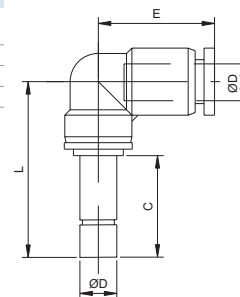
18

INNESTI RAPIDI • push-in fittings

gomito codolo • elbow with stem

WTLJ

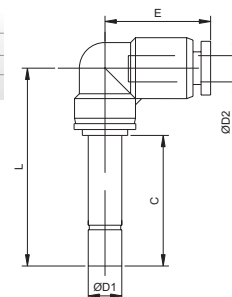

CODE	ØD	L	E	C	Peso Weight(g)	
WTLJ 0400	4	33,0	17,5	16,0	7,6	100
WTLJ 0600	6	36,2	19,0	18,0	11,2	100
WTLJ 0800	8	42,5	22,8	21,0	17,0	50
WTLJ 1000	10	50,8	26,3	24,0	30,5	25
WTLJ 1200	12	54,5	29,6	26,0	40,6	20



gomito codolo ridotto • reduced elbow with stem

WTLGJ


CODE	ØD1	ØD2	L	E	C	Peso Weight(g)	
WTGJ 0604	6	4	35,0	17,5	18,0	8,7	100
WTGJ 0806	8	6	39,2	19,0	21,0	13,7	100
WTGJ 1008	10	8	46,5	22,8	24,0	19,4	50
WTGJ 1210	12	10	52,8	26,3	26,0	34,6	25

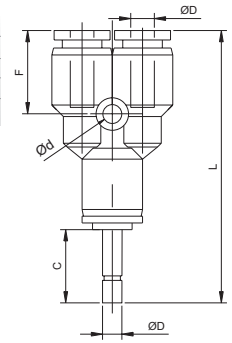


INNESTI RAPIDI IN TECNOPOLIMERO • plastic push-in fittings

intermedio a Y • union Y with stem

WTYJ

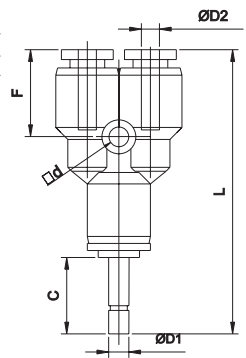

CODE	ØD	Ød	L	F	C	Peso Weight(g)	
WTYJ 0400	4	3,2	51,0	14,0	16	10,2	50
WTYJ 0600	6	3,2	54,3	14,8	18	14,4	50
WTYJ 0800	8	3,2	60,1	18,2	21	20,4	50
WTYJ 1000	10	4,2	71,6	19,5	24	38,1	25
WTYJ 1200	12	4,2	78,1	21,6	26	49,9	20



intermedio a Y codolo ridotto • reduced union Y with stem

WTWJ

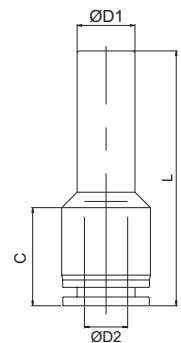

CODE	ØD1	ØD2	Ød	L	F	C	Peso Weight(g)	
WTWJ 0604	6	4	3,2	53,0	14,0	18	14,5	100
WTWJ 0806	8	6	3,2	57,3	14,8	21	20,4	50
WTWJ 1008	10	8	4,2	64,1	18,2	24	35,5	25
WTWJ 1210	12	10	4,2	73,6	19,5	26	50,5	20



riduzione codolo tubo • reducer

WTGJ


CODE	ØD1	ØD2	L	C	Peso Weight(g)	
WTGJ 0604	6	4	39,5	14,0	1,4	100
WTGJ 0804	8	4	41,5	14,0	2,7	100
WTGJ 0806	8	6	41,8	14,3	2,0	100
WTGJ 1006	10	6	46,8	17,3	3,8	100
WTGJ 1008	10	8	47,3	17,8	2,8	100
WTGJ 1206	12	6	51,8	19,3	7,7	50
WTGJ 1208	12	8	52,3	19,8	6,4	50
WTGJ 1210	12	10	51,5	19,0	4,2	50



codolo • junction

WTIJ

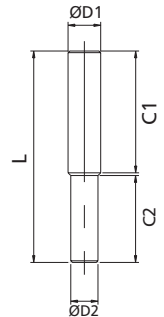

CODE	ØD	L	Peso Weight(g)	
WTIJ 04	4	35	0,4	100
WTIJ 06	6	37	0,8	100
WTIJ 08	8	41	1,2	100
WTIJ 10	10	51	2,7	100
WTIJ 12	12	54	3,5	100
WTIJ 16	16	58	5,3	100



codolo ridotto • reduced junction

WTIG


CODE	ØD1	ØD2	C1	C2	L	Peso Weight(g)	
WTIG 0604	6	4	18	17	36	0,6	100
WTIG 0806	8	6	20	18	39	1,0	100
WTIG 1008	10	8	25	20	46	1,9	100
WTIG 1210	12	10	27	26	54	3,2	100
WTIG 1612	16	12	28	28	56	4,8	50



tappo maschio • male plug

WTP


CODE	ØD	L	ØP1	ØP2	C	Peso Weight(g)	
WTP 04	4	28	5,0	3,0	15,0	0,4	100
WTP 06	6	33	7,0	3,0	17,0	0,8	100
WTP 08	8	37	9,0	4,0	18,0	1,3	100
WTP 10	10	42	11,0	5,0	20,5	2,2	100
WTP 12	12	44	13,0	6,0	23,0	3,1	50

