

NEW



AIISI 316L

INNESTI RAPIDI IN ACCIAIO INOX AISI 316L

push-in fittings INOX AISI 316L

LEGENDA CODICE • model designation

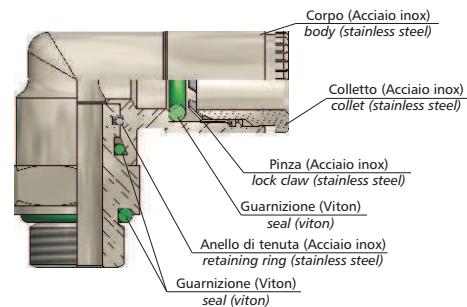
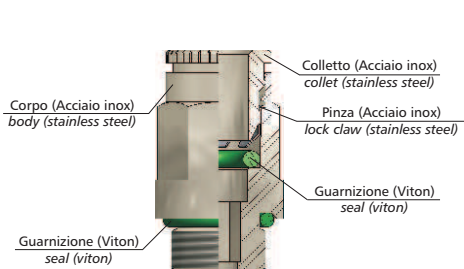
Filetto Conico BSPT • BSPT thread

XVC	04	R01
↓	↓	↓
Codice code	Diametro Tubo tube diameter	Filetto thread size
	Code	Size
	04	4mm
	06	6mm
	08	8mm
	10	10mm
		Conico BSPT BSPT thread
		R01 R1/8"
		R02 R1/4"
		R03 R3/8"

Filetto Cilindrico BSPP e Metrico • BSPP & metric thread

XVC	06	G01
↓	↓	↓
Codice code	Diametro Tubo tube diameter	Filetto thread size
	Codice code	Misura size
	04	4mm
	06	6mm
	08	8mm
		Metrico metric thread
		M5 M5x0,8P
		Cilindrico BSPP BSPP thread
		G01 G1/8"
		G02 G1/4"

SEZIONE INTERNA • structural diagram



DATI TECNICI

Fluidi compatibili	Aria Compressa, lubrificata e non lubrificata, Fluidi compatibili con i materiali costruttivi
Materiali costruttivi	Corpo: acciaio inox AISI 316L (1.4404) Colletto: acciaio inox AISI 316L (1.4404) Guarnizioni: Viton conforme FDA Pinza: acciaio inox AISI 316 (1.4401) Anello di tenuta per sistemi girevoli: AISI 302 (1.4310)
Filettature	Gas Conica BSPT ISO 7 da R1/8" a R3/8" Gas Cilindrica BSPP ISO 228 da G1/8" a G1/4" Metrica ISO 262 M5x0,8P
Pressione d'esercizio	da -750mmHg a 16 Bar
Temperatura d'esercizio	da -20°C a +150°C
Tubi utilizzabili	Poliammide (PA) - Polietilene (PE) - FEP Tolleranza da Ø 4mm a Ø 10mm - ±0,1mm PTFE - PUET Tolleranza da Ø 4mm a Ø 8mm - ±0,1mm Tolleranza Ø 10mm - ±0,15mm

Technical specifications

fluid types	lubricated and not-lubricated compressed air, fluids suitable with construction materials
materials used	body: stainless steel AISI 316L (1.4404) collet: stainless steel AISI 316L (1.4404) seals: viton approved FDA lock claw: stainless steel AISI 316 (1.4401) retaining ring for swivel systems: AISI 302 (1.4310)
threads	taper gas BSPT ISO 7 from R1/8" to R3/8" parallel gas BSPP ISO 228 from G1/8" to G1/4" metric ISO 262 M5x0,8P
working pressure	from -750mmHg to 16 Bar from -20°C to +150°C
working temperature	polyamide (PA) - polyethylene (PE) - FEP
applicable tubes	tolerance from Ø 4mm to Ø 10mm - ±0,1mm PTFE - PUET tolerance from Ø 4mm to Ø 8mm - ±0,1mm tolerance Ø 10mm - ±0,15mm

Disponibili a richiesta gamma "XE" con guarnizione in EPDM
available on demand "XE" series with EPDM seal

Prodotti conformi alla direttiva 2002/95/EC **RoHS**

Prodotti conformi alla direttiva 1907/2006 **REACH**

products in compliance with the directive 2002/95/EC **RoHS**

products in compliance with the directive 1907/2006 **REACH**

I dati tecnici e le quote non sono vincolanti • drawings and technical data are not binding

diritto maschio conico BSPT • male connector BSPT thread

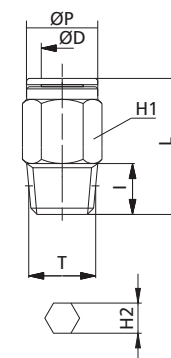
XVC



NEW

CODE	ØD	T	I	ØP	L	H1(Hex)	H2(Hex)	Passaggio orifice	Peso Weight(g)
XVC 04R01	4	R1/8"	6,5	9,0	19,0	10,0	3,0	3,0	9,0
XVC 04R02		R1/4"	11,0	9,0	20,0	14,0	3,0	3,4	14,0
XVC 06R01	6	R1/8"	7,5	11,0	21,0	12,0	5,0	5,0	10,0
XVC 06R02		R1/4"	11,0	11,0	21,0	14,0	5,0	5,0	17,0
XVC 08R01	8	R1/8"	7,5	13,0	26,0	14,0	6,0	6,0	13,0
XVC 08R02		R1/4"	11,0	13,0	23,0	14,0	6,0	6,0	15,0
XVC 10R02	10	R1/4"	11,0	15,0	31,0	16,0	8,0	8,3	24,0
XVC 10R03		R3/8"	11,5	15,0	27,0	17,0	8,0	8,3	25,0

AISI 316L



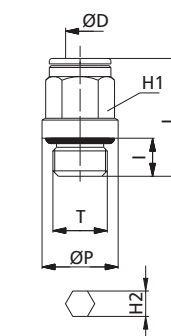
diritto maschio cilindrico BSPP & metrico con OR • male connector BSPP & metric thread with OR



NEW

CODE	ØD	T	I	ØP	L	H1(Hex)	H2(Hex)	Passaggio orifice	Peso Weight(g)
XVC 04M5	4	M5	4,0	8,0	20,0	9,0	-	2,5	5,0
XVC 04G01		G1/8"	6,0	13,0	20,0	9,0	3,0	2,6	8,0
XVC 06G01	6	G1/8"	6,0	13,0	24,0	13,0	4,0	4,2	10,0
XVC 06G02		G1/4"	8,0	16,0	21,5	16,0	4,0	4,2	16,0
XVC 08G01	8	G1/8"	6,0	13,0	26,5	13,0	5,0	5,2	13,0
XVC 08G02		G1/4"	8,0	16,0	25,0	16,0	6,0	6,2	17,0

AISI 316L



gomito maschio girevole conico BSPT • swivel male elbow BSPT thread

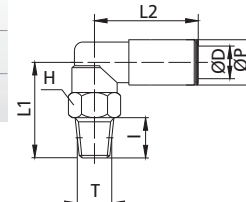
XVL



NEW

CODE	ØD	T	I	ØP	L1	L2	H(Hex)	Peso Weight(g)
XVL 04R01	4	R1/8"	7,0	9,0	20,0	20,0	10,0	19,0
XVL 06R01	6	R1/8"	7,0	11,0	20,0	21,0	13,0	20,0
XVL 06R02		R1/4"	11,0	11,0	25,0	21,0	14,0	25,0
XVL 08R01	8	R1/8"	7,0	13,0	20,0	24,0	13,0	21,0
XVL 08R02		R1/4"	11,0	13,0	25,0	24,0	14,0	26,0
XVL 10R02	10	R1/4"	11,0	16,0	26,5	25,5	16,0	33,0
XVL 10R03		R3/8"	11,5	16,0	27,0	25,5	17,0	40,0

AISI 316L



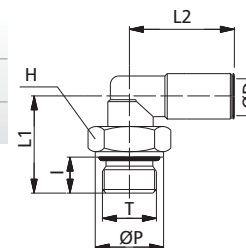
gomito maschio girevole cilindrico BSPP & metrico con OR • swivel male elbow BSPP & metric thread with OR



NEW

CODE	ØD	T	I	ØP	L1	L2	H(Hex)	Peso Weight(g)
XVL 04M5	4	M5	4	8,0	14,5	17,0	9,0	10,0
XVL 04G01		G1/8"	5,5	13,0	19,5	20,0	13,0	16,0
XVL 06G01	6	G1/8"	5,5	13,0	19,5	21,0	13,0	19,0
XVL 06G02		G1/4"	6,5	16,0	20,5	21,0	16,0	24,0
XVL 08G01	8	G1/8"	5,5	13,0	19,5	24,0	13,0	20,0
XVL 08G02		G1/4"	6,5	16,0	20,5	24,0	16,0	24,0

AISI 316L



intermedio diritto • union connector

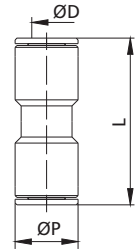
XVUC



NEW

CODE	ØD	ØP	L	Passaggio orifice	Peso Weight(g)	
XVUC 0400	4	9,0	32,0	3,0	10,0	1
XVUC 0600	6	11,0	33,0	5,0	19,0	1
XVUC 0800	8	13,0	39,0	7,0	28,0	1
XVUC 1000	10	15,0	39,0	9,0	30,0	1

AISI 316L



intermedio a gomito • union elbow

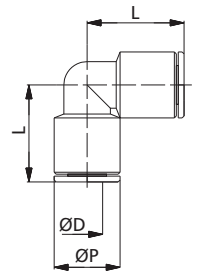
XVUL



NEW

CODE	ØD	ØP	L	Passaggio orifice	Peso Weight(g)	
XVUL 0400	4	9,0	17,0	3,0	9,0	1
XVUL 0600	6	12,0	20,0	5,0	12,0	1
XVUL 0800	8	14,0	21,0	7,0	23,0	1
XVUL 1000	10	16,0	25,0	9,0	24,0	1

AISI 316L



intermedio a T • union tee

XVUT



NEW

CODE	ØD	ØP	L1	L2	Passaggio orifice	Peso Weight(g)	
XVUT 0400	4	9,0	17,0	17,0	3,0	11,0	1
XVUT 0600	6	12,0	20,0	20,0	5,0	17,0	1
XVUT 0800	8	14,0	21,0	21,0	7,0	26,0	1
XVUT 1000	10	16,0	25,0	25,0	9,0	34,0	1

AISI 316L

