

## INNESTI RAPIDI IN PVDF • *push-in fittings in PVDF*

### LEGENDA CODICE • *Model designation*

PVDC	04	R01
PVDL	04	M5
PVDL	04	G01
↓	↓	↓
Codice Code	Diametro Tubo tube diameter	Filetto thread size

Code	Size	Conico BSPT BSPT thread	
04	4mm	01	R1/8"
06	6mm	02	R1/4"
08	8mm	03	R3/8"
10	10mm	04	R1/2"
12	12mm	Metrico metric thread	
		M5	M5
		Cilindrico BSPP BSPP thread	
		01	G1/8"
		02	G1/4"
		03	G3/8"
		04	G1/2"



### TOLLERANZA DIAMETRO ESTERNO TUBO • *Outer diameter tube tolerance*

Tubo • tube	Ø 4mm	Ø 6mm	Ø 8mm	Ø 10mm	Ø 12mm
Tolleranza tolerance	± 0,1	± 0,1	± 0,1	± 0,15	± 0,15

### DATI TECNICI

Applicazioni	Pneumatica, Fluidi, Settore Alimentare, Chimico, Medicale e Farmaceutico
Materiali utilizzati	Corpo: PVDF (polivinilidene fluoride) & acciaio inox AISI 316 Colletto (pinza di sgancio): PVDF (polivinilidene fluoride) Ghiera: PVDF (polivinilidene fluoride) Pinza di Tenuta: inox AISI 301 O'Ring: FKM (Viton)
Filettature	Gas Conica BSPT Gas Cilindrica BSPP Metrica M5
Pressione d'esercizio max	10 Bar (PN 10) a 20°C
Temperatura d'esercizio	da -20°C a +60°C
Tubi da utilizzare	Polietilene (PE) PTFE Calibrato FEP Calibrato

### Technical specifications

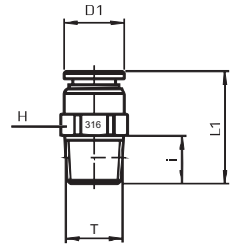
<i>applications</i>	<i>pneumatics, fluids, food, chemical, medical and pharmaceutical application</i>
<i>materials used</i>	<i>body: PVDF (polyvinylidene fluoride) &amp; stainless steel AISI 316 collet: PVDF (polyvinylidene fluoride) back ring: PVDF (polyvinylidene fluoride) lock claw: stainless steel AISI 301 o'ring: FKM (viton)</i>
<i>threads</i>	<i>BSPT thread BSPP thread Metric M5</i>
<i>max working pressure</i>	<i>10 Bar (PN 10) at 20°C</i>
<i>working temperature</i>	<i>from -20 °C to +60 °C</i>
<i>tubes used</i>	<i>polyethylene (PE) PTFE calibrated FEP calibrated</i>

**INNESTI RAPIDI IN PVDF • push-in fittings in PVDF**

diritto maschio conico BSPT • male connector BSPT thread

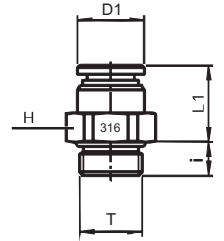
**PVDC**


CODE	ØD	T	i	L1	D1	H(Hex)	Peso Weight(g)	
PVDC 04R01	4	R1/8"	7,5	20,5	10,0	10	7,0	1
PVDC 06R01	6	R1/8"	7,5	21,5	12,0	12	8,0	1
PVDC 06R02		R1/4"	11,0	24,5	12,0	14	15,0	1
PVDC 08R01	8	R1/8"	7,5	27,0	14,0	14	12,0	1
PVDC 08R02		R1/4"	11,0	26,5	14,0	14	13,0	1
PVDC 08R03		R3/8"	11,5	24,5	14,0	17	22,0	1
PVDC 10R02		R1/4"	11,0	32,5	16,5	17	22,0	1
PVDC 10R03	10	R3/8"	11,5	28,0	16,5	17	22,0	1
PVDC 10R04		R1/2"	14,0	26,5	16,5	22	22,0	1
PVDC 12R04 <b>new</b>	12	R1/2"	14,0	31,5	20,0	22	21,0	1



diritto maschio cilindrico BSPP e metrico • male connector BSPP &amp; metric thread

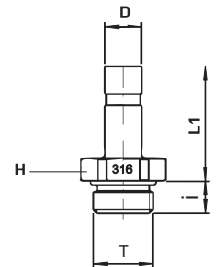
CODE	ØD	T	i	L1	D1	H(Hex)	Peso Weight(g)	
PVDC 04M5	4	M5	3,5	16,5	8,0	8	3,0	1
PVDC 04G01		G1/8"	5,0	14,0	10,0	13	9,0	1
PVDC 06M5	6	M5	3,5	17,5	10,0	10	4,0	1
PVDC 06G01		G1/8"	5,0	15,0	12,0	13	8,0	1
PVDC 06G02	8	G1/4"	7,0	14,5	12,0	17	16,0	1
PVDC 08G01		G1/8"	5,0	20,0	14,0	14	11,0	1
PVDC 08G02		G1/4"	7,0	16,0	14,0	17	14,0	1
PVDC 08G03		G3/8"	8,0	16,0	14,0	19	23,0	1
PVDC 10G02	10	G1/4"	7,0	22,0	16,5	17	20,0	1
PVDC 10G03		G3/8"	8,0	17,5	16,5	19	21,0	1
PVDC 10G04	12	G1/2"	9,0	15,5	16,5	24	37,0	1
PVDC 12G02 <b>new</b>		G1/4"	7,0	25,0	20,0	22	28,0	1
PVDC 12G03 <b>new</b>		G3/8"	8,0	19,5	20,0	22	28,0	1



adattatore cilindrico BSPP con o'ring • adapter BSPP thread with o'ring

**XTA**

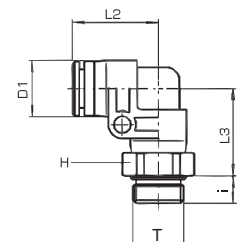

CODE	ØD	T	i	L1	H(Hex)	Peso Weight(g)	
XTA 04G01	4	G1/8"	5,0	21,5	13	6,0	1
XTA 04G02		G1/4"	7,0	22,0	17	13,0	1
XTA 06G01	6	G1/8"	5,0	22,5	13	7,0	1
XTA 06G02		G1/4"	7,0	23,0	17	14,0	1
XTA 08G01	8	G1/8"	5,0	24,5	13	8,0	1
XTA 08G02		G1/4"	7,0	25,0	17	14,0	1
XTA 10G02	10	G1/4"	7,0	29,0	17	16,0	1
XTA 10G03		G3/8"	8,0	29,0	19	18,0	1
XTA 12G03 <b>new</b>	12	G3/8"	8,0	31,0	19	28,0	1



gomito maschio girevole cilindrico BSPP e metrico • swivel male elbow BSPP &amp; metric thread

**PVDL**


CODE	ØD	T	i	L2	L3	D1	H(Hex)	Peso Weight(g)	
PVDL 04M5	4	M5	3,5	17,0	9,0	8,0	8	4,0	1
PVDL 04G01		G1/8"	5,0	18,5	19,5	12,5	13	16,0	1
PVDL 04G02	6	G1/4"	7,0	18,5	20,0	12,5	17	4,0	1
PVDL 06M5		M5	3,5	18,0	10,0	10,0	8	4,0	1
PVDL 06G01	8	G1/8"	5,0	19,0	19,5	12,5	13	16,0	1
PVDL 06G02		G1/4"	7,0	19,0	20,0	12,5	17	25,0	1
PVDL 08G01	8	G1/8"	5,0	22,0	22,0	14,5	14	19,0	1
PVDL 08G02		G1/4"	7,0	22,0	22,5	14,5	17	26,0	1
PVDL 08G03	10	G3/8"	8,0	22,0	22,5	14,5	19	35,0	1
PVDL 10G02		G1/4"	7,0	26,0	25,5	17,0	17	32,0	1
PVDL 10G03	12	G3/8"	8,0	26,0	25,5	17,0	19	41,0	1
PVDL 12G02 <b>new</b>		G1/4"	7,0	31,0	30,5	23,0	22	58,0	1
PVDL 12G03 <b>new</b>	G3/8"	8,0	31,0	30,5	23,0	22	58,0	1	

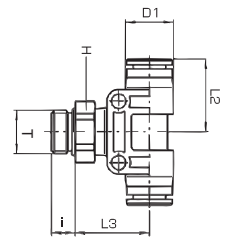


**INNESTI RAPIDI IN PVDF • push-in fittings in PVDF**

T centrale maschio girevole cilindrico BSPP • swivel central male tee BSPP thread

**PVDT**


CODE	ØD	T	i	L2	L3	D1	H (Hex)	Peso Weight(g)	
PVDT 04G01	4	G1/8"	5	18,5	19,5	12,5	13	19,0	1
PVDT 04G02		G1/4"	7	18,5	20,0	12,5	17	29,0	1
PVDT 06G01	6	G1/8"	5	19,0	19,5	12,5	13	20,0	1
PVDT 06G02		G1/4"	7	19,0	20,0	12,5	17	29,0	1
PVDT 08G01	8	G1/8"	5	22,0	22,0	14,5	14	24,0	1
PVDT 08G02		G1/4"	7	22,0	22,5	14,5	17	31,0	1
PVDT 08G03		G3/8"	8	22,0	22,5	14,5	19	40,0	1
PVDT 10G02	10	G1/4"	7	26,0	25,5	17,0	17	40,0	1
PVDT 10G03		G3/8"	8	26,0	25,5	17,0	19	46,0	1
PVDT 12G02 <b>new</b>	12	G1/4"	7	31,0	30,5	23,0	22	58,0	1
PVDT 12G03 <b>new</b>		G3/8"	8	31,0	30,5	23,0	22	40,0	1



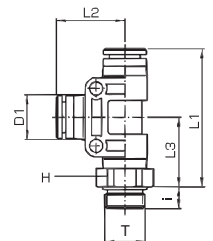
45

INNESTI RAPIDI • push-in fittings

T laterale maschio girevole cilindrico BSPP • swivel lateral male tee BSPP thread

**PVDST**

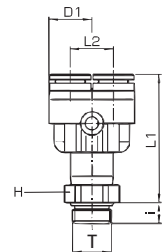

CODE	ØD	T	i	L1	L2	L3	D1	H (Hex)	Peso Weight(g)	
PVDST 04G01	4	G1/8"	5	39,0	18,5	19,5	12,5	13	19,0	1
PVDST 04G02		G1/4"	7	38,5	18,5	20,0	12,5	17	29,0	1
PVDST 06G01	6	G1/8"	5	39,5	19,0	19,5	12,5	13	20,0	1
PVDST 06G02		G1/4"	7	39,0	19,0	20,0	12,5	17	29,0	1
PVDST 08G01	8	G1/8"	5	44,0	22,0	22,0	14,5	14	24,0	1
PVDST 08G02		G1/4"	7	44,5	22,0	22,5	14,5	17	31,0	1
PVDST 08G03		G3/8"	8	44,5	22,0	22,5	14,5	19	40,0	1
PVDST 10G02	10	G1/4"	7	51,5	26,0	25,5	17,0	17	40,0	1
PVDST 10G03		G3/8"	8	51,5	26,0	25,5	17,0	19	48,0	1
PVDST 12G02 <b>new</b>	12	G1/4"	7	61,5	31,0	30,5	23,0	22	58,0	1
PVDST 12G03 <b>new</b>		G3/8"	8	61,5	31,0	30,5	23,0	22	58,0	1



Y maschio girevole cilindrico BSPP • swivel male Y BSPP thread

**PVDWT**

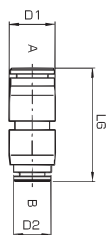

CODE	ØD	T	i	L1	L2	D1	H (Hex)	Peso Weight(g)	
PVDWT 04G01	4	G1/8"	5	38,0	12,5	12,5	13	19,0	1
PVDWT 04G02		G1/4"	7	38,5	12,5	12,5	17	28,0	1
PVDWT 06G01	6	G1/8"	5	38,5	12,5	12,5	13	20,0	1
PVDWT 06G02		G1/4"	7	39,0	12,5	12,5	17	29,0	1
PVDWT 08G01	8	G1/8"	5	43,0	14,5	14,5	14	24,0	1
PVDWT 08G02		G1/4"	7	43,5	14,5	14,5	17	32,0	1
PVDWT 08G03		G3/8"	8	43,5	14,5	14,5	19	40,0	1
PVDWT 10G02	10	G1/4"	7	48,5	17,0	17,0	17	40,0	1
PVDWT 10G03		G3/8"	8	48,5	17,0	17,0	17	48,0	1
PVDWT 12G02 <b>new</b>	12	G1/4"	7	55,0	20,5	21,0	22	40,0	1
PVDWT 12G03 <b>new</b>		G3/8"	8	55,0	20,5	21,0	22	58,0	1



intermedio diritto • union connector

**PVDUC**


CODE	A	B	L6	D1	D2	Peso Weight(g)	
PVDUC 0400	4	4	31,0	12,5	12,5	6,0	1
PVDUC 0604	6	4	31,5	12,5	12,5	6,0	1
PVDUC 0600		6	32,0	12,5	12,5	6,0	1
PVDUC 0806	8	6	35,5	14,5	14,5	6,0	1
PVDUC 0800		8	36,0	14,5	14,5	6,0	1
PVDUC 1008	10	8	40,5	17,0	17,0	15,0	1
PVDUC 1000		10	41,0	17,0	17,0	9,0	1
PVDUC 1200 <b>new</b>	12	12	46,0	23,0	23,0	9,0	1



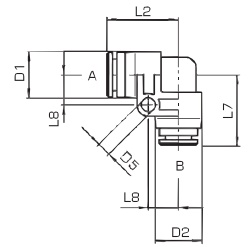
INNESTI RAPIDI IN PVDF • push-in fittings in PVDF

intermedio a gomito • union elbow

PVDUL



CODE	A	B	L2	L7	L8	D1	D2	D5	Peso Weight(g)	
PVDUL 0400	4	4	18,5	18,5	8,3	12,5	12,5	4,3	7,0	1
PVDUL 0604	6	4	19,0	18,5	8,3	12,5	12,5	4,3	7,0	1
PVDUL 0600	6	6	19,0	19,0	8,3	12,5	12,5	4,3	6,0	1
PVDUL 0806	8	6	22,0	21,5	9,3	14,5	14,5	4,3	12,0	1
PVDUL 0800	8	8	22,0	22,0	9,3	14,5	14,5	4,3	13,0	1
PVDUL 1006	10	6	26,0	25,0	12,0	17,0	17,0	4,3	19,0	1
PVDUL 1008	10	8	26,0	25,5	12,0	17,0	17,0	4,3	19,0	1
PVDUL 1000	10	10	26,0	26,0	12,0	17,0	17,0	4,3	19,0	1
PVDUL 1200 new	12	12	31,0	31,0	12,0	23,0	23,0	4,3	9,0	1

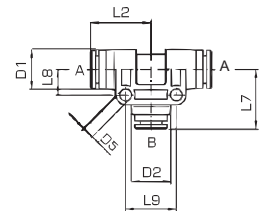


intermedio a T • union tee

PVDUT



CODE	A	B	L2	L7	L8	L9	D1	D2	D5	Peso Weight(g)	
PVDUT 0400	4	4	18,5	18,5	8,3	16,5	12,5	12,5	4,3	11,0	1
PVDUT 0604	6	4	19,0	18,5	8,3	16,5	12,5	12,5	4,3	11,0	1
PVDUT 0600	6	6	19,0	19,0	8,3	16,5	12,5	12,5	4,3	12,0	1
PVDUT 0806	8	6	22,0	21,5	9,3	18,5	14,5	14,5	4,3	20,0	1
PVDUT 0800	8	8	22,0	22,0	9,3	18,5	14,5	14,5	4,3	15,0	1
PVDUT 1006	10	6	26,0	25,0	12,0	24,0	17,0	17,0	4,3	25,0	1
PVDUT 1008	10	8	26,0	25,5	12,0	24,0	17,0	17,0	4,3	31,0	1
PVDUT 1000	10	10	26,0	26,0	12,0	24,0	17,0	17,0	4,3	15,0	1
PVDUT 1200 new	12	12	31,0	31,0	12,0	24,0	23,0	23,0	4,3	15,0	1

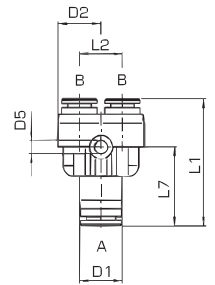


intermedio a Y • union Y

PVDY



CODE	A	B	L1	L2	L7	D1	D2	D5	Peso Weight(g)	
PVDY 0400	4	4	37,0	12,5	22,5	12,5	12,5	3,3	12,0	1
PVDY 0604	6	4	37,5	12,5	23,0	12,5	12,5	3,3	10,0	1
PVDY 0600	6	6	38,0	12,5	23,0	12,5	12,5	3,3	13,0	1
PVDY 0806	8	6	43,0	14,5	26,5	14,5	14,5	4,3	18,0	1
PVDY 0800	8	8	43,0	14,5	26,5	14,5	14,5	4,3	20,0	1
PVDY 1008	10	8	48,5	17,0	31,0	17,0	17,0	4,3	23,0	1
PVDY 1000	10	10	49,0	17,0	31,0	17,0	17,0	4,3	23,0	1
PVDY 1200 new	12	12	55,5	20,5	35,5	23,0	23,0	4,3	15,0	1



passaparte • bulkhead union

PVDMM



CODE	A	B	M	B	L1	L6	D1	D2	H1(Hex)	H2(Hex)	H3(Hex)	Peso Weight(g)	
PVDMM 0400	4	4	M14X1	1-10	10,5	31,0	10,0	10,0	17	12,5	17	10,0	1
PVDMM 0604	6	4	M14X1	1-10	11,0	31,5	12,0	10,0	17	12,5	17	10,0	1
PVDMM 0600	6	6	M14X1	1-10	11,0	32,0	12,0	12,0	17	12,5	17	11,0	1
PVDMM 0806	8	6	M16X1	1-10	12,5	35,5	14,0	12,0	19	14,5	19	14,0	1
PVDMM 0800	8	8	M16X1	1-10	12,5	36,0	14,0	14,0	19	14,5	19	14,0	1
PVDMM 1008	10	8	M20X1	1-10	14,0	40,5	17,0	14,0	22	18,0	24	21,0	1
PVDMM 1000	10	10	M20X1	1-10	14,0	41,0	17,0	17,0	22	18,0	24	21,0	1

