

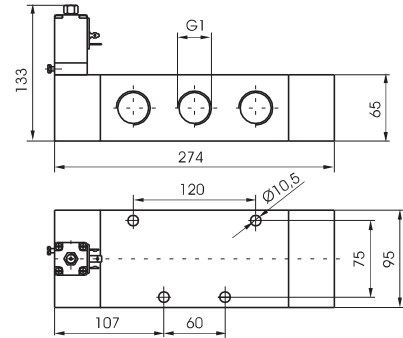
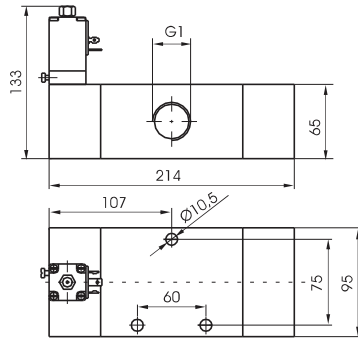
**Solenoid - Spring**

3/2

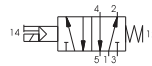
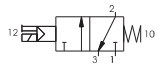
Ordering code

**411.T.0.1.S**

- T** TYPE  
32 = 3 ways  
52 = 5 ways
- S** SOLENOID CODE  
S = See Solenoid valves "S" type, Series 300



Weight gr. 3400  
Minimum working pressure 2,5 bar



Weight gr. 4300  
Minimum working pressure 2,5 bar

**Operational characteristic**

Operational characteristic	Fluid	Max working pressure (bar)	Temperature °C		Flow rate at 6 bar with Δp=1 (NI/min)	Orifice size (mm)	Working ports size
	Filtered and lubricated air	10 bar	Min. -5°C	Max. +50°C	6500 NI/min	mm 20	G 1"

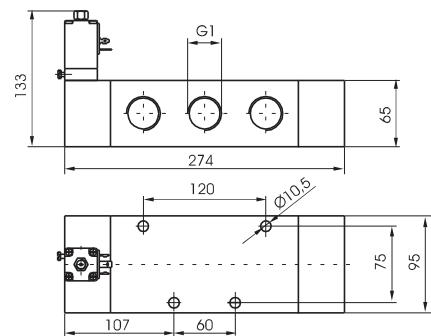
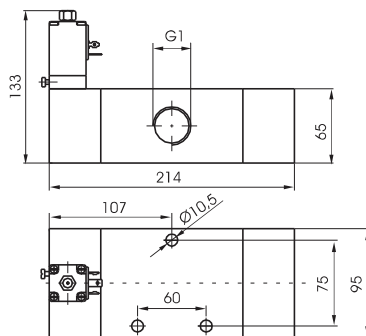
**Solenoid - Differential**

3/2

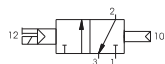
Ordering code

**411.T.0.12.S**

- T** TYPE  
32 = 3 ways  
52 = 5 ways
- S** SOLENOID CODE  
S = See Solenoid valves "S" type, Series 300



Weight gr. 3400  
Minimum working pressure 2,5 bar



Weight gr. 4300  
Minimum working pressure 2,5 bar

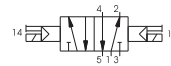
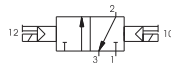
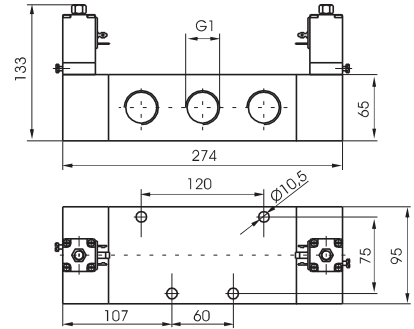
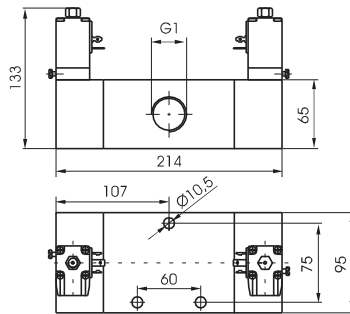
**Operational characteristic**

Operational characteristic	Fluid	Max working pressure (bar)	Temperature °C		Flow rate at 6 bar with Δp=1 (NI/min)	Orifice size (mm)	Working ports size
	Filtered and lubricated air	10 bar	Min. -5°C	Max. +50°C	6500 NI/min	mm 20	G 1"

3/2

Solenoid - Solenoid

Ordering code	<b>411.1.0.0.S</b>
TYPE	32 = 3 ways 52 = 5 ways
SOLENOID CODE	S = See Solenoid valves "S" type, Series 300



Weight gr. 3700  
Minimum working pressure 2 bar

Weight gr. 4600  
Minimum working pressure 2 bar

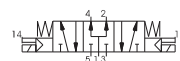
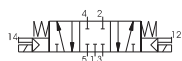
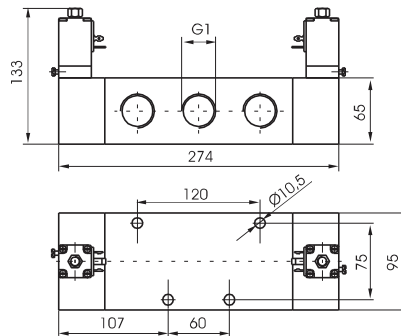
Operational characteristic	Fluid	Max working pressure (bar)	Temperature °C		Flow rate at 6 bar with Δp=1 (NI/min)	Orifice size (mm)	Working ports size
		Filtered and lubricated air	10 bar	Min. -5°C	Max. +50°C	6500 NI/min	mm 20

2

Solenoid - Solenoid

5/3

Ordering code	<b>411.53.F.0.0.S</b>
FUNCTION	31 = Closed centres 32 = Open centres 33 = Pressured centres
SOLENOID CODE	S = See Solenoid valves "S" type, Series 300



Weight gr. 4700  
Minimum working pressure 3 bar

Operational characteristic	Fluid	Max working pressure (bar)	Temperature °C		Flow rate at 6 bar with Δp=1 (NI/min)	Orifice size (mm)	Working ports size
		Filtered and lubricated air	10 bar	Min. -5°C	Max. +50°C	6500 NI/min	mm 20