


**AISI 316**

203

# RACCORDI STANDARD INOX AISI 316

## standard fittings INOX AISI 316

### LEGENDA CODICE • Model designation

1480TR  
↓  
Codice  
code

H  
↓  
Alta Pressione  
high pressure

18  
↓  
Filetto  
thread size

Conico BSPT BSPT thread	
18	R1/8"
14	R1/4"
38	R3/8"
12	R1/2"
34	R3/4"
1	R1"

Cilindrico BSPP BSPP thread	
18	G1/8"
14	G1/4"
38	G3/8"
12	G1/2"
34	G3/4"
1	G1"



### DATI TECNICI


<b>Fluidi compatibili</b>	Aria compressa, acqua potabile e fluidi alimentari compatibili con i materiali costruttivi
<b>Materiali costruttivi</b>	Corpo: Acciaio INOX AISI 316 Corpo: Acciaio INOX AISI 316 forgiato secondo norma ASME-SA-182 316 BS970 316-S31 DIN 4401 (per i codici serie H: 1480, 1485, 1490 e 1492)
<b>Filettature</b>	Gas Conica BSPT ISO 7 da R1/8" a R1" Gas Cilindrica BSPP ISO 228 da G1/8" a G1"
<b>Pressione d'esercizio</b>	PN 350 per i codici 1480, 1485, 1490 e 1492 PN 150 per tutti gli altri codici
<b>Temperatura d'esercizio</b>	da -20°C a +180°C


### Technical specifications

<b>fluid types</b>	compressed air, potable water and food fluids suitable with construction materials
<b>construction materials</b>	body: stainless steel AISI 316 body: stainless steel AISI 316 forged according to standard ASME-SA-182 316 BS970 316-S31 DIN 4401 (for H codes: 1480, 1485, 1490 and 1492)
<b>threads</b>	taper gas BSPT ISO 7 from R1/8" to R1" parallel gas BSPP ISO 228 from G1/8" to G1"
<b>working pressure</b>	PN 350 for codes 1480, 1485, 1490 and 1492 PN 150 for all the other codes
<b>working temperature</b>	from -20°C to +180°C

Prodotti conformi alla direttiva 2002/95/EC 

Prodotti conformi alla direttiva 1907/2006 

products in compliance with the directive 2002/95/EC 

products in compliance with the directive 1907/2006 

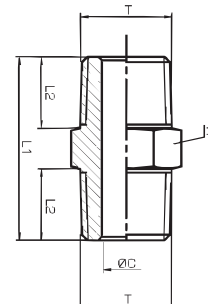
nipplo conico BSPT • nipple BSPT thread

### 1410



CODE	T	PN(Bar)	ØC	L1	L2	H(Hex)	Peso Weight(g)	
1410TR18	R1/8"	150	5	24	9,0	12	11,3	10
1410TR14	R1/4"	150	7	27	10,5	14	19,6	10
1410TR38	R3/8"	150	10	30	11,5	17	29,9	10
1410TR12	R1/2"	150	13	38	15,0	22	58,0	10
1410TR34	R3/4"	150	18	46	18,0	27	95,4	10

AISI 316



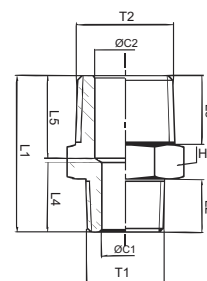
nipplo conico ridotto BSPT • reduced nipple BSPT thread

### 1412



CODE	T1	T2	PN(Bar)	ØC1	ØC2	L1	L2	L3	L4	L5	H(Hex)	Peso Weight(g)	
1412TR1814	R1/8"	R1/4"	150	7	5	25,5	10,5	9,0	15,00	9,9	14	15,9	10
1412TR1438	R1/4"	R3/8"	150	7	10	29,0	10,5	11,5	13,10	15,0	17	26,6	10
1412TR1412	R1/4"	R1/2"	150	7	13	33,0	10,5	15,0	13,27	18,0	22	45,3	10
1412TR3812	R3/8"	R1/2"	150	10	13	34,0	11,5	15,0	15,10	18,0	22	48,5	10
1412TR1234	R1/2"	R3/4"	150	13	18	43,0	15,0	18,0	19,60	22,0	27	87,1	10

AISI 316



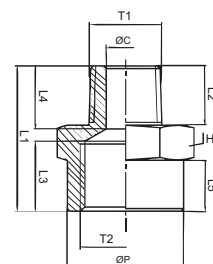
maggiorazione M conica BSPT / F Cilindrica BSPP • M BSPT thread / F BSPP thread enlarger

### 1420



CODE	T1	T2	PN(Bar)	ØC	ØP	L1	L2	L3	L4	L5	H(Hex)	Peso Weight(g)	
1420TR1814	R1/8"	G1/4"	150	5	16,5	22	8	11,0	9,1	8,0	17	16,2	10
1420TR1438	R1/4"	G3/8"	150	7	21,5	27,0	11	13,0	11,7	9,5	22	33,2	10
1420TR3812	R3/8"	G1/2"	150	10	26,5	30,0	11	15,0	12,4	11,5	27	54,6	10

AISI 316



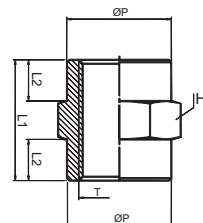
manicotto F/F cilindrico BSPP • F/F sleeve BSPP thread

### 1425



CODE	T	PN(Bar)	ØP	L1	L2	H(Hex)	Peso Weight(g)	
1425TR18	G1/8"	150	13,0	15	5,0	14	8,9	10
1425TR14	G1/4"	150	16,5	22	7,5	17	17,4	10
1425TR38	G3/8"	150	21,5	25	8,5	22	34,4	10
1425TR12	G1/2"	150	26,5	32	11,0	27	64,4	10
1425TR34	G3/4"	150	31,5	34	12,0	32	79,3	10

AISI 316



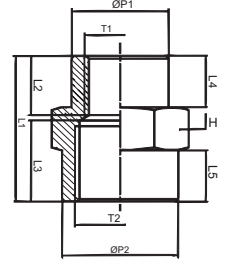
manicotto F/F ridotto cilindrico BSPP • reduced F/F sleeve BSPP thread

1426



CODE	T1	T2	PN(Bar)	ØP1	ØP2	L1	L2	L3	L4	L5	H(Hex)	Peso Weight(g)	
1426TR1814	G1/8"	G1/4"	150	13,5	16,5	23,0	9,1	13	7,0	9,0	17	18,4	10
1426TR1438	G1/4"	G3/8"	150	18,0	21,5	27,0	11,0	15	9,5	9,5	22	36,2	10
1426TR1412	G1/4"	G1/2"	150	18,0	26,5	30,0	10,8	17	9,5	10,5	27	56,8	10
1426TR3812	G3/8"	G1/2"	150	21,5	26,5	30,0	11,8	17	8,0	13,0	27	61,6	10
1426TR1234	G1/2"	G3/4"	150	26,5	31,5	36,0	14,6	20	11,0	15,0	32	88,3	10

AISI 316



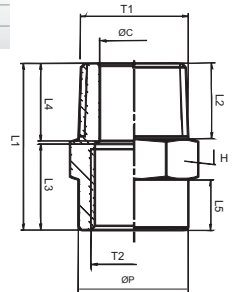
riduzione M conica BSPT / F cilindrica BSPP • M BSPT thread / F BSPP thread reducer

1440



CODE	T1	T2	PN(Bar)	ØP	ØC	L1	L2	L3	L4	L5	H(Hex)	Peso Weight(g)	
1440TR1418	R1/4"	G1/8"	150	13,5	7,0	23,5	11,0	9	13,0	7,0	14	16,0	10
1440TR3814	R3/8"	G1/4"	150	16,5	10,0	26,5	11,5	12	13,1	8,0	17	23,7	10
1440TR1238	R1/2"	G3/8"	150	21,4	13,0	33,0	15,0	17	15,4	10,0	22	47,0	10

AISI 316



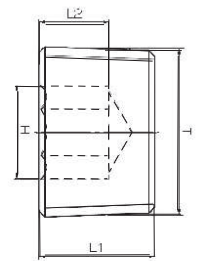
tappo M brugola conico BSPT piatto • M plug BSPT thread with exagon embedded

1461



CODE	T1	PN(Bar)	L1	L2	H(Hex)	Peso Weight(g)	
1461TR18	R1/8"	150	8,2	5,0	5	3,0	10
1461TR14	R1/4"	150	10,2	6,0	6	7,4	10
1461TR38	R3/8"	150	11,6	7,0	8	14,0	10
1461TR12	R1/2"	150	13,3	8,0	10	24,5	10
1461TR34	R3/4"	150	15,0	9,0	12	46,4	10

AISI 316



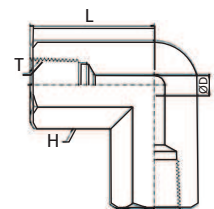
gomito F/F cilindrico BSPP • F/F elbow BSPP thread

1480



CODE	T	ØD	L	H(Hex)	
1480TRH18	G1/8"	8,6	26,4	5/8	10
1480TRH14	G1/4"	11,4	29,7	13/16	10
1480TRH38	G3/8"	15,0	36,1	15/16	10
1480TRH12	G1/2"	18,5	39,6	1-1/8	10
1480TRH34	G3/4"	23,9	48,8	1-3/8	10
1480TRH1	G1"	29,7	48,5	1-11/16	10

AISI 316



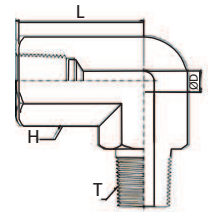
gomito M/F • M/F elbow

1485



CODE	T	ØD	L	H(Hex)	
1485TRH18	G1/8"	4,8	26,4	5/8	10
1485TRH14	G1/4"	7,1	29,7	13/16	10
1485TRH38	G3/8"	9,6	36,1	15/16	10
1485TRH12	G1/2"	11,9	39,6	1-1/8	10
1485TRH34	G3/4"	15,8	48,8	1-3/8	10
1485TRH1	G1"	22,4	48,5	1-11/16	10

AISI 316



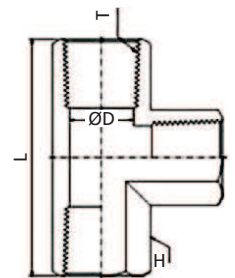
T F/F/F • F/F/F tee

1490



CODE	T	ØD	L	H(Hex)	
1490TRH18	G1/8"	8,6	52,8	5/8	10
1490TRH14	G1/4"	11,4	59,4	13/16	10
1490TRH38	G3/8"	15,0	72,2	15/16	10
1490TRH12	G1/2"	18,5	79,2	1-1/8	10
1490TRH34	G3/4"	23,9	97,6	1-3/8	10
1490TRH1	G1"	29,7	97,0	1-11/16	10

AISI 316



T F/M/F • F/M/F tee

1492



CODE	T1	ØD	L1	L2	H(Hex)	
1492TRH18	R1/8"	4,8	52,8	22,1	5/8	10
1492TRH14	R1/4"	7,1	59,4	29,7	13/16	10
1492TRH38	R3/8"	9,6	72,2	32,0	15/16	10
1492TRH12	R1/2"	11,9	79,2	39,6	1-1/8	10

AISI 316

