

RACCORDI STANDARD IN LEGA PRESSOFUSA

die-casted alloy standard fittings

LEGENDA CODICE • model designation

900TR

 ↓
Codice
code

18

 ↓
Filetto
thread size

Conico BSPT BSPT thread	
18	R1/8"
14	R1/4"
38	R3/8"
12	R1/2"
34	R3/4"
1	R1"

Cilindrico BSPP BSPP thread	
18	G1/8"
14	G1/4"
38	G3/8"
12	G1/2"
34	G3/4"
1	G1"



DATI TECNICI

Fluidi compatibili	Aria compressa, acqua, olio e fluidi compatibili con i materiali costruttivi
Materiali costruttivi	Legga pressofusa
Filettature	Gas Conica BSPT ISO 7 da R1/8" a R1/2" Gas Cilindrica BSPP ISO 228 da G1/8" a G1/2"
Pressione d'esercizio max	40 BAR Pressione e temperatura d'esercizio sono comunque determinate dal tipo di tubo impiegato, pertanto tali valori sono da definire in base alle caratteristiche del tubo stesso.

Technical specifications

fluids type	compressed air, water, oil and fluids suitable with construction materials
construction materials	die-casted alloy
threads	taper gas BSPT ISO 7 from R1/8" to R1/2" parallel gas BSPP ISO 228 from G1/8" to G1/2"
max working pressure	40 BAR Pressure & temperature depend on the tube used, so their values will be defined according to the features of the tube itself.

 Prodotti conformi alla direttiva 2002/95/EC **RoHS**

Prodotti conformi alla direttiva 1907/2006


 products in compliance with the directive 2002/95/EC **RoHS**

products in compliance with the directive 1907/2006




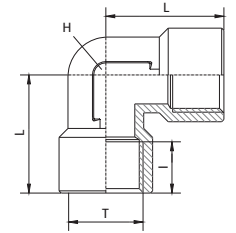
RACCORDI STANDARD IN LEGA PRESSOFUSA • die-casted alloy standard fittings

gomito F/F cilindrico BSPP • F/F elbow BSPP thread

900




CODE	T	I	L	H (Hex)	
900TR18	G1/8"	7,5	18,5	8	100
900TR14	G1/4"	11,0	22,0	13	100
900TR38	G3/8"	11,5	26,5	17	50
900TR12	G1/2"	14,0	33,0	20	25

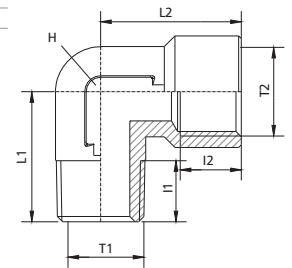


gomito M conico BSPT / F cilindrico BSPP • male BSPT thread / female BSPP thread elbow

905




CODE	T1	T2	I1	I2	L1	L2	H (Hex)	
905TR18	R1/8"	G1/8"	7,5	7,5	18,5	18,5	8	100
905TR14	R1/4"	G1/4"	11,0	11,0	22,0	22,0	13	100
905TR38	R3/8"	G3/8"	11,5	11,5	26,5	26,5	17	50
905TR12	R1/2"	G1/2"	14,0	14,0	30,5	30,0	20	25

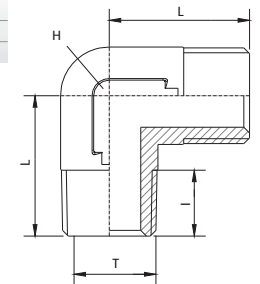


gomito M/M conico BSPT • M/M elbow BSPT thread

910




CODE	T	I	L	H (Hex)	
910TR18	R1/8"	7,5	18,5	8	100
910TR14	R1/4"	11,0	22,0	13	100
910TR38	R3/8"	11,5	26,5	17	50
910TR12	R1/2"	14,0	30,5	20	25

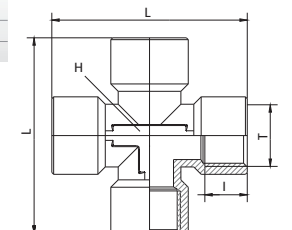


croce F/F/F/F cilindrico BSPP • F/F/F/F BSPP thread equal cross

915



CODE	T	I	L	H (Hex)	
915TR18	G1/8"	7,5	37,0	8	100
915TR14	G1/4"	11,0	44,0	13	50
915TR38	G3/8"	11,5	53,0	17	25
915TR12	G1/2"	14,0	66,0	20	10



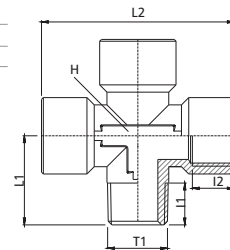
RACCORDI STANDARD IN LEGA PRESSOFUSA • die-casted alloy standard fittings

croce M/F/F/F • M/F/F/F equal cross

916



CODE	T1	T2	I1	I2	L1	L2	H (Hex)	
916TR18	R1/8"	G1/8"	7,5	7,5	18,5	37,0	8	100
916TR14	R1/4"	G1/4"	11,0	11,0	22,0	44,0	13	100
916TR38	R3/8"	G3/8"	11,5	11,5	26,5	53,0	17	50
916TR12	R1/2"	G1/2"	14,0	14,0	30,5	66,0	20	25

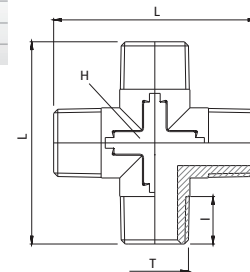


croce M/M/M/M • M/M/M/M equal cross

918



CODE	T	I	L	H (Hex)	
918TR18	R1/8"	7,5	37,0	8	25
918TR14	R1/4"	11,0	44,0	13	25
918TR38	R3/8"	11,5	53,0	17	25
918TR12	R1/2"	14,0	61,0	20	25

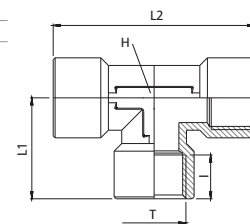


T F/F/F • F/F/F tee

920



CODE	T	I	L1	L2	H (Hex)	
920TR18	G1/8"	7,5	18,5	37,0	8	100
920TR14	G1/4"	11,0	22,0	44,0	13	50
920TR38	G3/8"	11,5	26,5	53,0	17	50
920TR12	G1/2"	14,0	33,0	66,0	20	25

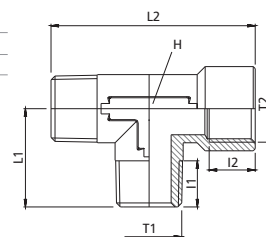


T M/M/F • M/M/F tee

925



CODE	T1	T2	I1	I2	L1	L2	H (Hex)	
925TR18	R1/8"	G1/8"	7,5	7,5	18,5	37,0	8	100
925TR14	R1/4"	G1/4"	11,0	11,0	22,0	44,0	13	50
925TR38	R3/8"	G3/8"	11,5	11,5	26,5	53,0	17	50
925TR12	R1/2"	G1/2"	14,0	14,0	30,5	63,5	20	25

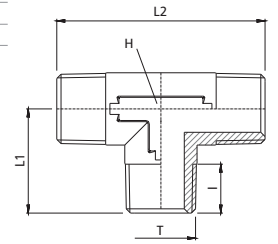


T M/M/M • M/M/M tee

930



CODE	T	I	L1	L2	H (Hex)	
930TR18	R1/8"	7,5	18,5	37,0	8	100
930TR14	R1/4"	11,0	22,0	44,0	13	50
930TR38	R3/8"	11,5	26,5	53,0	17	50
930TR12	R1/2"	14,0	30,5	61,0	20	25

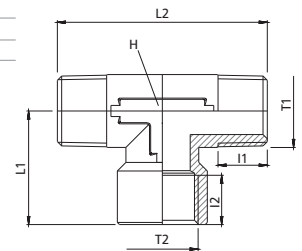


T M/F/M • M/F/M tee

935



CODE	T1	T2	I1	I2	L1	L2	H (Hex)	
935TR18	R1/8"	G1/8"	7,5	7,5	18,5	37,0	8	100
935TR14	R1/4"	G1/4"	11,0	11,0	22,0	44,0	13	50
935TR38	R3/8"	G3/8"	11,5	11,5	26,5	53,0	17	50
935TR12	R1/2"	G1/2"	14,0	14,0	33,0	61,0	20	25

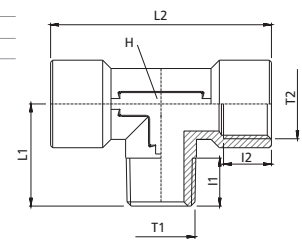


T F/M/F • F/M/F tee

940



CODE	T1	T2	I1	I2	L1	L2	H (Hex)	
940TR18	R1/8"	G1/8"	7,5	7,5	18,5	37,0	8	100
940TR14	R1/4"	G1/4"	11,0	11,0	22,0	44,0	13	50
940TR38	R3/8"	G3/8"	11,5	11,5	26,5	53,0	17	50
940TR12	R1/2"	G1/2"	14,0	14,0	30,5	66,0	20	25

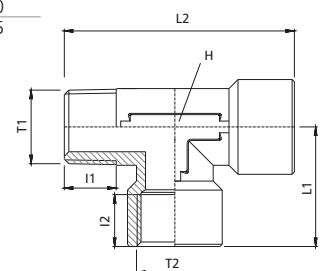


T M/F/F • M/F/F tee

945



CODE	T1	T2	I1	I2	L1	L2	H (Hex)	
945TR18	R1/8"	G1/8"	7,5	7,5	18,5	37,0	8	100
945TR14	R1/4"	G1/4"	11,0	11,0	22,0	44,0	13	50
945TR38	R3/8"	G3/8"	11,5	11,5	26,5	53,0	17	50
945TR12	R1/2"	G1/2"	14,0	14,0	33,0	63,5	20	25



RACCORDI STANDARD IN OTTONE • *brass standard fittings*

LEGENDA CODICE • *model designation*

1200TR
↓
Codice
code

M5
↓
Filetto
thread size

Metrico Metric thread	
M5	M5

Conico BSPT BSPT thread	
18	R1/8"
14	R1/4"
38	R3/8"
12	R1/2"
34	R3/4"
1	R1"

Cilindrico BSPP BSPP thread	
18	G1/8"
14	G1/4"
38	G3/8"
12	G1/2"
34	G3/4"
1	G1"



DATI TECNICI

Fluidi compatibili	Aria compressa, acqua, olio e fluidi compatibili con i materiali costruttivi
Materiali costruttivi	Ottone UNI EN 12164 CW 614N nichelato Ottone UNI EN 12165 CW 617N nichelato O'Ring: NBR
Filettature	Gas Conica BSPT ISO 7 da R1/8" a R1" Gas Cilindrica BSPP ISO 228 da G1/8" a G1" Metrica ISO R/262 M5
Pressione d'esercizio max	60 BAR Pressione e temperatura d'esercizio sono comunque determinate dal tipo di tubo impiegato, pertanto tali valori sono da definire in base alle caratteristiche del tubo stesso.

Prodotti conformi alla direttiva 2002/95/EC 

Prodotti conformi alla direttiva 1907/2006 

Technical specifications

<i>fluids type</i>	<i>compressed air, water, oil and fluids suitable with construction materials</i>
<i>construction materials</i>	<i>nickel plated brass UNI EN 12164 CW 614N nickel plated brass UNI EN 12165 CW 617N O'Ring: NBR</i>
<i>threads</i>	<i>taper gas BSPT ISO 7 from R1/8" to R1" parallel gas BSPP ISO 228 from G1/8" to G1" metric ISO R/262 M5</i>
<i>max working pressure</i>	<i>60 BAR Pressure & temperature depends on the tube used, so their values will be defined according to the features of the tube itself.</i>

products in compliance with the directive 2002/95/EC 

products in compliance with the directive 1907/2006 

Disponibili su richiesta e quantità minima in ottone giallo
available on demand and with minimum quantity in yellow brass

I dati tecnici e le quote non sono vincolanti • *drawings and technical data are not binding*

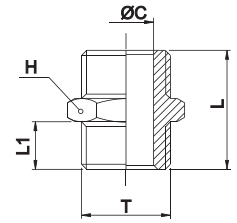
RACCORDI STANDARD IN OTTONE • *brass standard fittings*

nipplo cilindrico BSPP & metrico • *nipple BSPP & metric thread*

1105



CODE	T	ØC	L	L1	H (Hex)	Peso Weight(g)	
1105TRM5	M5	2,5	11,0	4	8	2,0	100
1105TR18	G1/8"	6,0	18,5	7	14	9,0	100
1105TR14	G1/4"	8,5	21,0	8	17	15,0	100
1105TR38	G3/8"	11,5	23,0	9	19	21,0	100
1105TR12	G1/2"	15,0	25,0	10	24	34,0	50
1105TR34	G3/4"	20,0	27,5	11	30	53,0	50
1105TR1	G1"	26,0	32,0	13	36	84,0	25

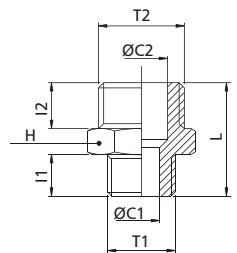


nipplo cilindrico ridotto BSPP & metrico • *reduced nipple BSPP & metric thread*

1107



CODE	T1	T2	ØC1	ØC2	I1	I2	L	H (Hex)	Peso Weight(g)	
1107TRM518	M5	G1/8"	2,5	6,0	5,0	6,5	15,5	14	7,0	100
1107TR1814	G1/8"	G1/4"	5,5	8,5	6,5	8,0	19,0	17	14,0	100
1107TR1838	G1/8"	G3/8"	5,5	11,5	6,5	9,0	20,5	19	19,0	100
1107TR1438	G1/4"	G3/8"	8,5	11,5	8,0	9,0	22,0	19	19,0	100
1107TR1412	G1/4"	G1/2"	8,0	15,0	9,0	10,0	24,5	24	35,0	100
1107TR3812	G3/8"	G1/2"	11,0	15,0	9,0	10,0	24,5	24	36,0	50
1107TR3834	G3/8"	G3/4"	11,0	20,0	10,0	11,0	26,5	30	52,0	50
1107TR1234	G1/2"	G3/4"	15,0	20,0	11,0	11,0	27,5	30	52,0	50
1107TR341	G3/4"	G1"	20,0	25,5	11,0	13,0	30,0	36	71,0	25

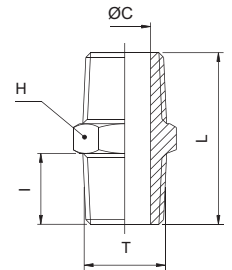


nipplo conico BSPT • *nipple BSPT thread*

1110



CODE	T	ØC	I	L	H (Hex)	Peso Weight(g)	
1110TR18	R1/8"	6,0	7,5	19,0	12	7,0	100
1110TR14	R1/4"	7,5	11,0	26,5	14	16,0	100
1110TR38	R3/8"	11,5	11,0	27,0	17	23,0	100
1110TR12	R1/2"	15,0	12,5	30,5	22	79,0	50
1110TR34	R3/4"	20,0	14,0	34,5	27	61,0	50
1110TR1	R1"	26,0	15,5	37,0	34	92,0	25

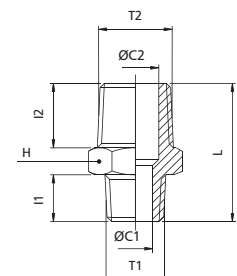


nipplo conico ridotto BSPT • *reduced nipple BSPT thread*

1112



CODE	T1	T2	ØC1	ØC2	I1	I2	L	H (Hex)	Peso Weight(g)	
1112TR1814	R1/8"	R1/4"	5,5	8,5	7,5	11,0	23,0	14	12,0	100
1112TR1838	R1/8"	R3/8"	5,5	11,5	7,5	11,0	23,5	17	19,0	100
1112TR1438	R1/4"	R3/8"	8,5	11,5	10,5	11,0	26,5	17	21,0	100
1112TR1412	R1/4"	R1/2"	8,0	15,0	10,5	12,5	28,5	22	32,0	100
1112TR3812	R3/8"	R1/2"	11,0	15,0	10,5	12,5	28,5	22	35,0	50
1112TR1234	R1/2"	R3/4"	15,0	20,0	12,5	14,0	32,5	27	58,0	50
1112TR341	R3/4"	R1"	20,0	25,5	13,0	15,5	35,5	34	91,0	25



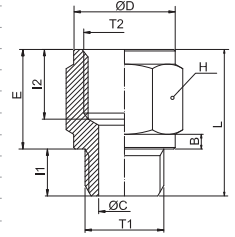
RACCORDI STANDARD IN OTTONE • *brass standard fittings*

maggiorazione M/F cilindrica BSPP & metrico • *M/F BSPP & metric thread enlarger*

1115



CODE	T1	T2	B	Ø C	Ø D	I1	I2	E	L	H(Hex)	Peso Weight(g)	
1115TRM5	M5	M5	1,5	2,5	7,5	4,5	5,0	6,5	11,0	8	3,0	100
1115TRM518	M5	G1/8"	2,0	2,2	13,5	5,0	7,0	11,0	16,0	14	10,0	100
1115TRM618	M6	G1/8"	2,0	2,7	13,5	6,0	7,0	11,0	17,0	14	10,0	100
1115TR18	G1/8"	G1/8"	2,0	5,5	13,5	6,5	8,0	11,0	17,5	14	11,0	100
1115TR1814	G1/8"	G1/4"	2,0	5,5	16,5	6,5	10,5	13,5	20,0	17	18,0	100
1115TR1838	G1/8"	G3/8"	2,5	5,5	21,5	6,5	10,5	14,0	20,5	22	33,0	100
1115TR14	G1/4"	G1/4"	2,0	8,5	16,5	8,0	10,5	13,5	21,5	17	19,0	100
1115TR1438	G1/4"	G3/8"	2,5	8,0	21,5	9,0	10,5	14,0	23,0	22	32,0	100
1115TR1412	G1/4"	G1/2"	3,0	8,0	26,5	9,0	12,5	17,0	26,0	27	51,0	100
1115TR38	G3/8"	G3/8"	2,5	11,0	21,5	9,0	10,5	14,0	23,0	22	32,0	100
1115TR3812	G3/8"	G1/2"	3,0	11,0	26,5	9,0	12,5	17,0	26,0	27	54,0	50
1115TR3834	G3/8"	G3/4"	3,0	11,0	31,5	9,0	12,5	17,0	26,0	32	66,0	50
1115TR12	G1/2"	G1/2"	3,0	15,0	26,5	10,5	12,5	16,0	26,5	27	56,0	50
1115TR1234	G1/2"	G3/4"	3,0	15,0	31,5	10,5	12,5	17,0	27,5	32	71,0	50
1115TR121	G1/2"	G1"	3,0	15,0	37,5	11,0	12,5	18,0	29,0	38	93,0	50
1115TR34	G3/4"	G3/4"	3,0	20,0	31,5	10,5	12,5	17,0	27,5	32	69,0	50
1115TR341	G3/4"	G1"	3,0	20,0	37,5	11,0	12,5	18,0	29,0	38	93,0	25
1115TR1	G1"	G1"	3,0	26,0	37,5	13,0	12,5	18,0	31,0	38	96,0	25

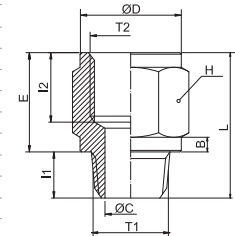


maggiorazione M conica BSPT / F cilindrica BSPP • *M BSPT thread / F BSPP thread enlarger*

1120



CODE	T1	T2	B	Ø C	Ø D	I1	I2	E	L	H(Hex)	Peso Weight(g)	
1120TR18	R1/8"	G1/8"	2,0	5,5	13,5	7,5	8	11,0	18,5	14	12,0	100
1120TR1814	R1/8"	G1/4"	2,0	5,5	16,5	7,5	10,5	13,5	21,0	17	18,0	100
1120TR1838	R1/8"	G3/8"	2,5	5,5	21,5	7,5	10,5	14,0	21,5	22	31,0	100
1120TR14	R1/4"	G1/4"	2,0	8,5	16,5	10,5	10,5	13,5	24,0	17	18,0	100
1120TR1438	R1/4"	G3/8"	2,5	8,0	21,5	10,5	10,5	14,0	24,5	22	32,0	100
1120TR1412	R1/4"	G1/2"	3,0	8,0	26,5	10,5	12,5	17,0	27,5	27	52,0	100
1120TR38	R3/8"	G3/8"	2,5	11,0	21,5	10,5	10,5	14,0	24,5	22	37,0	100
1120TR3812	R3/8"	G1/2"	3,0	11,0	26,5	10,5	12,5	17,0	27,5	27	55,0	50
1120TR3834	R3/8"	G3/4"	3,0	11,0	31,5	11,0	12,5	17,0	28,0	32	74,0	50
1120TR12	R1/2"	G1/2"	3,0	15,0	26,5	12,5	12,5	16,0	28,5	27	54,0	50
1120TR1234	R1/2"	G3/4"	3,0	15,0	31,5	12,5	12,5	17,0	29,5	32	70,0	50
1120TR121	R1/2"	G1"	3,0	15,0	37,5	13,0	12,5	18,0	31,0	38	91,0	25
1120TR34	R3/4"	G3/4"	3,0	20,0	31,5	13,0	12,5	17,0	30,0	32	74,0	50
1120TR341	R3/4"	G1"	3,0	20,0	37,5	13,0	12,5	18,0	31,0	38	97,0	25
1120TR1	R1"	G1"	3,0	26,0	37,5	15,5	12,5	18,0	33,5	38	100,0	25

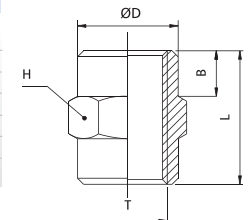


manicotto F/F cilindrico BSPP & metrico • *F/F sleeve BSPP & metric thread*

1125



CODE	T	Ø D	B	L	H (Hex)	Peso Weight(g)	
1125TRM5	M5	7,5	3,5	11,0	8	3,0	100
1125TR18	G1/8"	13,5	5,0	15,0	14	10,0	100
1125TR14	G1/4"	16,5	8,0	22,0	17	18,0	100
1125TR38	G3/8"	21,5	8,5	24,0	22	37,0	100
1125TR12	G1/2"	26,5	10,0	29,0	27	62,0	50
1125TR34	G3/4"	31,5	10,0	29,0	32	70,0	50
1125TR1	G1"	37,5	11,0	31,0	38	89,0	25

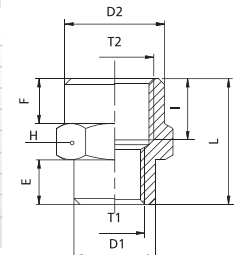


manicotto F/F ridotto cilindrico BSPP & metrico • *reduced F/F sleeve BSPP & metric thread*

1126



CODE	T1	T2	ØD1	ØD2	I	E	F	L	H(Hex)	Peso Weight(g)	
1126TRM518	M5	G1/8"	8,0	13,5	7,0	3,5	4,5	12,5	14	9,0	100
1126TR1814	G1/8"	G1/4"	13,0	16,5	11,0	6,0	8,0	20,0	17	18,0	100
1126TR1838	G1/8"	G3/8"	14,0	21,5	11,0	6,0	8,0	20,0	22	28,0	100
1126TR1438	G1/4"	G3/8"	17,0	21,5	11,0	7,0	8,0	21,0	22	30,0	100
1126TR1412	G1/4"	G1/2"	17,0	26,5	13,0	8,0	9,0	24,0	27	46,0	50
1126TR3812	G3/8"	G1/2"	21,5	26,5	13,0	8,0	9,0	24,0	27	48,0	50
1126TR3834	G3/8"	G3/4"	21,0	31,5	13,5	8,0	10,0	25,0	32	64,0	50
1126TR1234	G1/2"	G3/4"	26,0	31,5	13,5	8,0	10,0	25,0	32	65,0	50
1126TR121	G1/2"	G1"	26,0	37,0	14,0	8,0	10,0	25,0	38	84,0	25
1126TR341	G3/4"	G1"	32,0	37,0	14,0	8,0	10,0	25,0	38	83,0	25



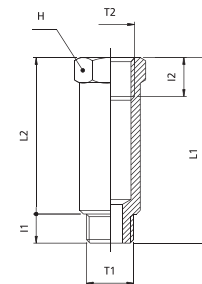
RACCORDI STANDARD IN OTTONE • *brass standard fittings*

prolunga M/F cilindrica BSPP • *M/F extension BSPP thread*

1130



CODE	T1	T2	I1	I2	L1	L2	H (Hex)	Peso Weight(g)	
1130TR181422	G1/8"	G1/8"	6	8,0	22	16	14	14,0	100
1130TR181442	G1/8"	G1/8"	6	8,0	42	36	14	30,0	100
1130TR181451	G1/8"	G1/8"	6	8,0	51	45	14	36,0	100
1130TR141735	G1/4"	G1/4"	8	11,0	35	27	17	32,0	100
1130TR141751	G1/4"	G1/4"	8	11,0	51	43	17	46,0	50

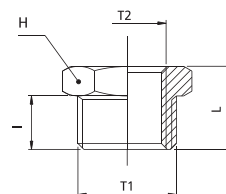


riduzione M/F cilindrica BSPP & metrico • *M/F reducer BSPP & metric thread*

1135



CODE	T1	T2	I	L	H (Hex)	Peso Weight(g)	
1135TRM518	G1/8"	M5	6,5	10,5	14	7,0	100
1135TR1418	G1/4"	G1/8"	8,0	12,5	17	10,0	100
1135TR3818	G3/8"	G1/8"	9,0	14,0	19	18,0	100
1135TR3814	G3/8"	G1/4"	9,0	14,0	19	13,0	100
1135TR1218	G1/2"	G1/8"	10,0	15,0	24	39,0	100
1135TR1214	G1/2"	G1/4"	10,0	15,0	24	32,0	100
1135TR1238	G1/2"	G3/8"	10,0	15,0	24	21,0	100
1135TR3414	G3/4"	G1/4"	11,0	16,5	30	64,0	50
1135TR3438	G3/4"	G3/8"	11,0	16,5	30	52,0	50
1135TR3412	G3/4"	G1/2"	11,0	16,5	30	36,0	50
1135TR138	G1"	G3/8"	13,5	19,5	36	110,0	25
1135TR112	G1"	G1/2"	13,0	19,0	36	90,0	25
1135TR134	G1"	G3/4"	13,0	19,0	36	59,0	25

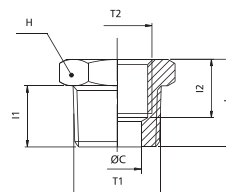


riduzione M conica BSPT / F cilindrica BSPP • *M BSPT thread / F BSPP thread reducer*

1140



CODE	T1	T2	ØC	I1	I2	L	H (Hex)	Peso Weight(g)	
1140TR1418	R1/4"	G1/8"	6,0	11,0	9,0	15,5	14	9,0	100
1140TR3818	R3/8"	G1/8"	6,5	11,0	9,0	15,5	17	21,0	100
1140TR3814	R3/8"	G1/4"	8,5	11,0	11,0	15,5	17	13,0	100
1140TR1218	R1/2"	G1/8"	6,0	12,5	10,0	18,0	22	42,0	100
1140TR1214	R1/2"	G1/4"	8,5	12,5	11,5	18,0	22	34,0	100
1140TR1238	R1/2"	G3/8"	11,5	12,5	11,5	18,0	22	25,0	100
1140TR3414	R3/4"	G1/4"	8,5	14,0	12,0	20,0	27	74,0	50
1140TR3438	R3/4"	G3/8"	11,5	14,0	12,0	20,0	27	62,0	50
1140TR3412	R3/4"	G1/2"	15,0	14,0	14,0	20,0	27	43,0	50
1140TR138	R1"	G3/8"	15,0	15,5	13,0	21,5	34	123,0	25
1140TR112	R1"	G1/2"	15,0	15,5	14,0	21,5	34	104,0	25
1140TR134	R1"	G3/4"	20,0	15,5	14,0	21,5	34	73,0	25

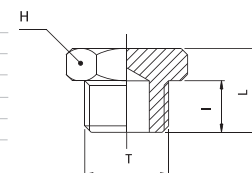


tappo M cilindrico BSPP & metrico • *M plug BSPP & metric thread*

1145



CODE	T	I	L	H (Hex)	Peso Weight(g)	
1145TRM5	M5	4,5	7,5	8	4,0	100
1145TR18	G1/8"	6,0	10,0	14	7,0	100
1145TR14	G1/4"	8,0	12,5	17	12,0	100
1145TR38	G3/8"	9,0	13,5	19	19,0	100
1145TR12	G1/2"	10,0	15,0	24	28,0	100
1145TR34	G3/4"	11,0	16,5	30	46,0	50
1145TR1	G1"	12,5	18,5	36	79,0	25



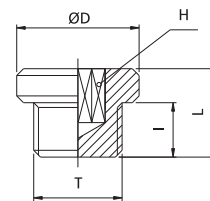
RACCORDI STANDARD IN OTTONE • *brass standard fittings*

tappo M cilindrico BSPP & metrico con brugola • *M plug BSPP & metric thread with exagon embedded*

1148



CODE	T	I	L	Ø D	H (Hex)	Peso Weight(g)	
1148TRM5	M5	4,0	6,5	8,0	2,5	2,0	100
1148TR18	G1/8"	6,0	10,0	15,0	5	8,0	100
1148TR14	G1/4"	8,0	12,0	18,0	6	12,0	100
1148TR38	G3/8"	9,0	13,0	21,0	8	22,0	100
1148TR12	G1/2"	10,0	14,5	25,0	10	36,0	100

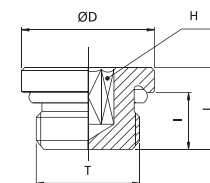


tappo M cilindrico BSPP & metrico con brugola e OR • *M plug BSPP & metric thread with exagon embedded and OR*

1149



CODE	T	I	L	Ø D	H (Hex)	Peso Weight(g)	
1149TRM5	M5	4,5	7,2	8,0	2,5	1,4	100
1149TR18	G1/8"	6,5	9,5	14,0	5	6,0	100
1149TR14	G1/4"	8,0	11,5	17,0	6	12,0	100
1149TR38	G3/8"	9,0	12,5	20,0	8	18,0	100
1149TR12	G1/2"	10,0	14,0	26,0	10	32,0	100

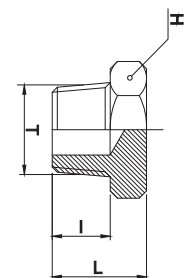


tappo M conico BSPT • *M plug BSPT thread*

1150



CODE	T	I	L	H (Hex)	Peso Weight(g)	
1150TR18	R1/8"	7,5	11,5	10	4,0	100
1150TR14	R1/4"	11,0	15,5	14	9,0	100
1150TR38	R3/8"	11,0	16,0	17	17,0	100
1150TR12	R1/2"	12,0	17,5	22	29,0	100
1150TR34	R3/4"	13,5	19,5	27	60,0	50
1150TR1	R1"	15,5	22,0	34	92,0	25

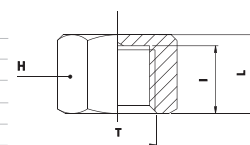


tappo F cilindrico BSPP & metrico • *F plug BSPP & metric thread*

1155



CODE	T	I	L	H (Hex)	Peso Weight(g)	
1155TRM5	M5	5,5	7,0	8	2,0	100
1155TR18	G1/8"	9,0	11,0	14	5,0	100
1155TR14	G1/4"	11,0	13,0	17	17,0	100
1155TR38	G3/8"	11,0	13,5	21	23,0	100
1155TR12	G1/2"	11,0	13,5	24	44,0	100
1155TR34	G3/4"	12,5	15,0	30	44,0	50
1155TR1	G1"	12,5	15,0	38	56,0	25

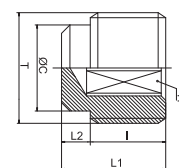


tappo M brugola cilindrico BSPP con invito • *M plug BSPP thread with exagon embedded*

1160



CODE	T	I	ØC	L1	L2	H (Hex)	Peso Weight(g)	
1160TR18	G1/8"	4,0	8,0	7,0	3,0	5	2,0	100
1160TR14	G1/4"	6,0	10,5	10,0	4,0	6	6,0	100
1160TR38	G3/8"	6,0	13,5	10,0	4,0	8	10,0	50
1160TR12	G1/2"	6,5	17,5	11,0	4,0	10	13,0	50



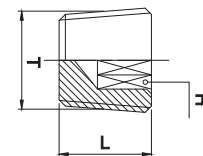
RACCORDI STANDARD IN OTTONE • *brass standard fittings*

tappo M brugola conico BSPT piatto • *M flat plug BSPT thread exagon embedded*

1161



CODE	T	L	H (Hex)	Peso Weight(g)	
1161TR18	R1/8"	8,0	5	3,0	100
1161TR14	R1/4"	10,0	6	7,0	100
1161TR38	R3/8"	10,5	8	23,0	50
1161TR12	R1/2"	13,0	10	24,0	50

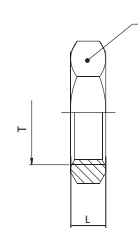


dado • *nut*

1175



CODE	T	L	H (Hex)	Peso Weight(g)	
1175TRM5	M5	2,5	9	1,0	100
1175TR18	G1/8"	3,5	12	3,0	100
1175TR14	G1/4"	4,0	16	2,0	100
1175TR38	G3/8"	4,5	19	3,0	50
1175TR12	G1/2"	4,5	24	6,0	50
1175TR34	G3/4"	5,0	30	10,0	25
1175TR1	G1"	6,0	38	20,0	10

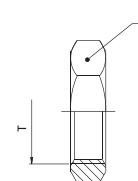


ghiera passaparete • *bulkhead locking nut*

1176



CODE	T	H (Hex)	
1176TRM101	M10x1	14	100
1176TRM121	M12x1	16	100
1176TRM1615	M16x1,5	19	100
1176TRM1815	M18x1,5	22	100
1176TRM2015	M20x1,5	24	100
1176TRM2215	M22x1,5	25	100
1176TRM2615	M26x1,5	32	100
1176TRM2815	M28x1,5	36	100

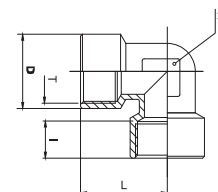


gomito F/F cilindrico BSPP & metrico • *F/F elbow BSPP & metric thread*

1200



CODE	T	I	D	L	H (Hex)	Peso Weight(g)	
1200TRM5	M5	5,5	9,0	11,0	8	6,0	100
1200TR18	G1/8"	8,0	13,5	20,5	10	19,0	100
1200TR14	G1/4"	11,5	16,5	31,0	13	33,0	100
1200TR38	G3/8"	12,0	21,0	36,0	17	57,0	50
1200TR12	G1/2"	15,0	26,0	44,0	21	109,0	50
1200TR34	G3/4"	16,5	32,0	36,5	25	144,0	10
1200TR1	G1"	19,0	39,0	45,0	30	244,0	10

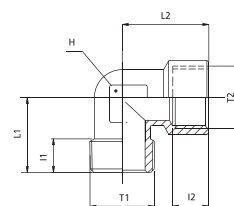


gomito M conico BSPT / F cilindrico BSPP & metrico • *male BSPT / female BSPP & metric thread elbow*

1205



CODE	T1	T2	I1	I2	L1	L2	H (Hex)	Peso Weight(g)	
1205TRM5	M5	M5	5,0	5,5	11,5	11	8	7,0	100
1205TR18	R1/8"	G1/8"	9,5	8,0	17,5	19,5	10	16,0	100
1205TR14	R1/4"	G1/4"	11,5	11,5	24,0	25	13	31,0	100
1205TR38	R3/8"	G3/8"	13,0	12,0	27,5	27,5	17	46,0	50
1205TR12	R1/2"	G1/2"	15,0	15,0	30,0	33,5	21	92,0	50
1205TR34	R3/4"	G3/4"	16,0	16,5	33,0	36,5	25	120,0	10
1205TR1	R1"	G1"	17,0	19,0	39,0	45,0	30	212,0	10



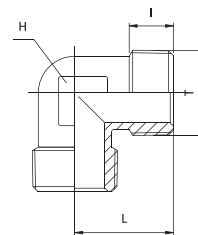
RACCORDI STANDARD IN OTTONE • *brass standard fittings*

gomito M/M conico BSPT • *M/M elbow BSPT thread*

1210



CODE	T	I	L	H (Hex)	Peso Weight(g)	
1210TRM5	M5	5,0	13,5	8	6,0	100
1210TR18	R1/8"	9,0	18,5	10	13,0	100
1210TR14	R1/4"	11,5	22,0	12	20,0	100
1210TR38	R3/8"	13,0	26,0	13	31,0	50
1210TR12	R1/2"	14,0	28,5	17	55,0	50
1210TR34	R3/4"	16,0	33,0	25	100,0	10
1210TR1	R1"	17,0	39,0	30	174,0	10

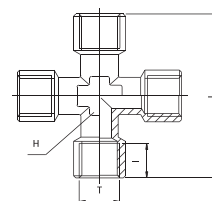


croce F/F/F/F • *F/F/F/F equal cross*

1215



CODE	T	I	L	H (Hex)	Peso Weight(g)	
1215TR18	G1/8"	8,0	42,0	10	38,0	100
1215TR14	G1/4"	11,0	51,0	13	76,0	50
1215TR38	G3/8"	11,5	56,0	17	108,0	25
1215TR12	G1/2"	14,0	67,0	21	186,0	10

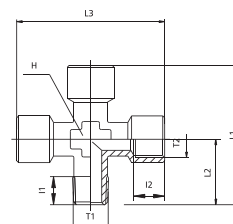


croce M/F/F/F • *M/F/F/F equal cross*

1216



CODE	T1	T2	I1	I2	L1	L2	L3	H (Hex)	Peso Weight(g)	
1216TR18	R1/8"	G1/8"	8,0	8,0	39,5	18,5	42	10	34,0	100
1216TR14	R1/4"	G1/4"	11,0	11,0	49,0	23,5	51	13	68,0	50
1216TR38	R3/8"	G3/8"	11,5	11,5	54,0	26,0	56	17	100,0	25
1216TR12	R1/2"	G1/2"	14,0	14,0	64,5	31,0	67	21	168,0	10

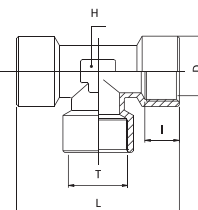


T F/F/F • *F/F/F tee*

1220



CODE	T	I	L	H (Hex)	Peso Weight(g)	
1220TRM5	M5	5,5	26,5	8	7,0	100
1220TR18	G1/8"	8,0	40,0	10	28,0	100
1220TR14	G1/4"	11,5	50,0	13	49,0	50
1220TR38	G3/8"	12,0	57,0	17	85,0	50
1220TR12	G1/2"	15,0	68,5	21	146,0	25
1220TR34	G3/4"	16,5	73,0	25	194,0	10
1220TR1	G1"	19,0	90,0	30	326,0	10

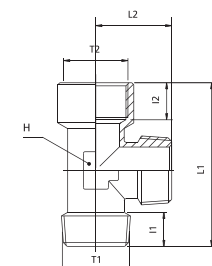


T M/M/F • *M/M/F tee*

1225



CODE	T1	T2	I1	I2	L1	L2	H (Hex)	Peso Weight(g)	
1225TRM5	M5	M5	5,0	5,5	26,0	13,0	8	8,0	100
1225TR18	R1/8"	G1/8"	9,5	8,0	38,5	18,5	10	25,0	100
1225TR14	R1/4"	G1/4"	11,5	11,5	47,5	23,5	13	43,0	50
1225TR38	R3/8"	G3/8"	13,0	12,0	56,0	26,0	17	72,0	25
1225TR12	R1/2"	G1/2"	15,0	15,0	67,5	32,0	21	102,0	25
1225TR34	R3/4"	G3/4"	16,0	16,5	69,5	33,0	25	156,0	10
1225TR1	R1"	G1"	17,5	19,0	84,0	39,0	30	268,0	10



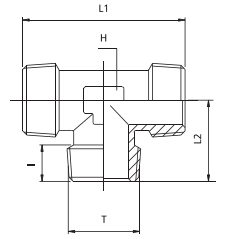
RACCORDI STANDARD IN OTTONE • *brass standard fittings*

T M/M/M • M/M/M tee

1230



CODE	T	I	L1	L2	H (Hex)	Peso Weight(g)	
1230TRM5	M5	5,0	27,5	13,5	8	8,0	100
1230TR18	R1/8"	9,5	36,0	17,0	10	20,0	100
1230TR14	R1/4"	11,5	48,0	24,0	12	38,0	100
1230TR38	R3/8"	12,0	48,0	24,0	13	47,0	50
1230TR12	R1/2"	15,0	57,0	28,0	17	80,0	50
1230TR34	R3/4"	16,2	66,4	33,0	25	134,0	10
1230TR1	R1"	17,5	78,0	39,0	30	236,0	10

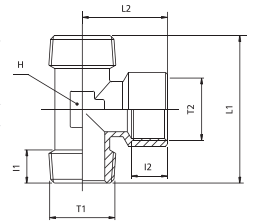


T M/F/M • M/F/M tee

1235



CODE	T1	T2	I1	I2	L1	L2	H (Hex)	Peso Weight(g)	
1235TRM5	M5	M5	5,0	5,5	27,5	13,0	8	6,0	100
1235TR18	R1/8"	G1/8"	9,5	8,0	36,5	19,5	10	22,0	100
1235TR14	R1/4"	G1/4"	11,5	11,5	48,0	25,5	13	37,0	100
1235TR38	R3/8"	G3/8"	13,0	12,0	51,5	28,0	17	62,0	50
1235TR12	R1/2"	G1/2"	15,0	15,0	63,0	34,0	21	118,0	25
1235TR34	R3/4"	G3/4"	16,0	16,5	66,4	36,5	25	156,0	10
1235TR1	R1"	G1"	17,5	19,0	78,0	45,0	30	268,0	10

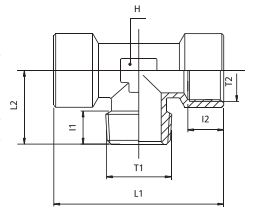


T F/M/F • F/M/F tee

1240



CODE	T1	T2	I1	I2	L1	L2	H (Hex)	Peso Weight(g)	
1240TRM5	M5	M5	5,0	5,5	26,5	11,5	8	9,0	100
1240TR18	R1/8"	G1/8"	9,5	8,0	40,0	18,5	10	22,0	100
1240TR14	R1/4"	G1/4"	11,5	11,5	50,0	24,5	13	49,0	50
1240TR38	R3/8"	G3/8"	13,0	12,0	57,0	26,5	17	75,0	50
1240TR12	R1/2"	G1/2"	15,0	15,0	68,5	32,0	21	127,0	25
1240TR34	R3/4"	G3/4"	16,0	16,5	73,0	33,0	25	178,0	10
1240TR1	R1"	G1"	17,5	19,0	90,0	39,0	30	296,0	10

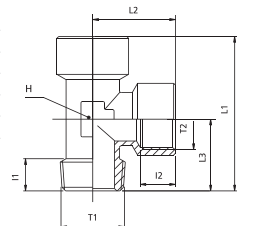


T M/F/F • M/F/F tee

1245



CODE	T1	T2	I1	I2	L1	L2	L3	H (Hex)	Peso Weight(g)	
1245TRM5	M5	M5	5,0	5,5	26,0	13,0	12,0	8	9,0	100
1245TR18	R1/8"	G1/8"	9,5	8,0	38,5	19,5	18,5	10	24,0	100
1245TR14	R1/4"	G1/4"	11,5	11,5	49,0	25,0	24,0	13	44,0	50
1245TR38	R3/8"	G3/8"	13,0	12,0	54,0	28,5	25,5	17	74,0	50
1245TR12	R1/2"	G1/2"	15,0	15,0	65,5	34,5	31,0	21	132,0	25
1245TR34	R3/4"	G3/4"	16,0	16,5	69,5	36,5	33,0	25	172,0	10
1245TR1	R1"	G1"	17,5	19,0	84,0	45,0	39,0	30	298,0	10

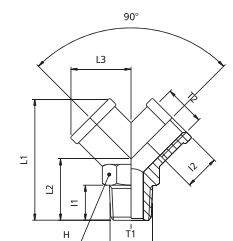


Y F/M/F • F/M/F Y

1300



CODE	T1	T2	I1	I2	L1	L2	L3	H (Hex)	Peso Weight(g)	
1300TR18	R1/8"	G1/8"	8,0	8,0	32,0	16	14,5	13	22,0	100
1300TR14	R1/4"	G1/4"	11,0	11,0	38,0	20	18,0	17	38,0	100
1300TR38	R3/8"	G3/8"	11,5	11,5	42,5	22	20,5	20	52,0	50
1300TR12	R1/2"	G1/2"	14,0	14,0	53,0	27	26,5	25	110,0	25



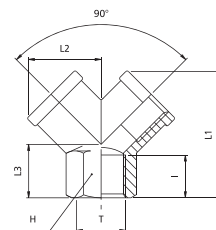
RACCORDI STANDARD IN OTTONE • *brass standard fittings*

Y F/F/F • F/F/F Y

1310



CODE	T	I	L1	L2	L3	H (Hex)	Peso Weight(g)	
1310TR18	G1/8"	8,0	26,5	14,5	12	13	18,0	100
1310TR14	G1/4"	11,0	32,0	18,0	14	17	32,0	100
1310TR38	G3/8"	11,5	37,0	20,5	16	20	44,0	50
1310TR12	G1/2"	14,0	45,0	26,5	19	25	92,0	25

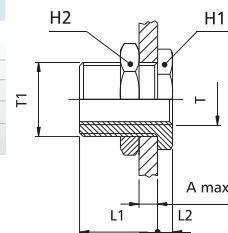


passaparte F/F • *F/F bulkhead connector*

1320



CODE	T	T1	A max	L1	L2	H1 (Hex)	H2 (Hex)	Peso Weight(g)	
1320TRM5M101	M5	M10X1	7	10,5	3,5	14	14	12,0	100
1320TR18M1615	G1/8"	M16X1,5	10	14,0	4,0	19	22	30,0	100
1320TR14M2015	G1/4"	M20X1,5	16	21,0	4,0	24	27	58,0	50
1320TR38M2615	G3/8"	M26X1,5	15	21,0	5,0	30	32	94,0	50
1320TR12M2815	G1/2"	M28X1,5	21	27,0	6,0	32	36	116,0	25

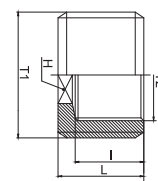


riduzione con brugola a scomparsa • *exagon embedded reducer*

1600



CODE	T1	T2	I	L	H (Hex)	Peso Weight(g)	
1600TRM518	G1/8"	M5	6,5	8,0	3	3,0	100
1600TR1418	G1/4"	G1/8"	7,0	9,0	6	7,0	100
1600TR3818	G3/8"	G1/8"	7,0	9,0	6	10,0	100
1600TR3814	G3/8"	G1/4"	7,0	9,0	8	6,0	100
1600TR1214	G1/2"	G1/4"	8,5	10,5	10	23,0	50
1600TR1238	G1/2"	G3/8"	8,5	10,5	10	10,0	50
1600TR3412	G3/4"	G1/2"	11,0	13,0	12	35,0	25
1600TR134	G1"	G3/4"	12,5	15,0	17	38,0	10



niplo tre pezzi M/M conico BSPT • *M/M nipple three pieces BSPT thread*

1110-3PCS



NEW

CODE	T	I	L	H1 (Hex)	H2 (Hex)	H3 (Hex)	Peso Weight(g)	
1110TR18-3P	R1/8"	9,0	27,0	15	5	5	59,0	100
1110TR14-3P	R1/4"	12,0	33,5	19	6	6	65,0	100
1110TR38-3P	R3/8"	13,0	36,5	22	8	8	71,0	100
1110TR12-3P	R1/2"	16,0	44,0	27	12	12	86,0	50
1110TR34-3P	R3/4"	18,0	53,0	36	14	14	103,0	50
1110TR1-3P	R1"	22,0	64,0	46	19	19	124,0	25

