

NEW



RACCORDI PORTAGOMMA IN PVDF PVDF barb connectors

LEGENDA CODICE • model designation

5910TR

↓
Codice
code

18

↓
Filetto
thread size

4

↓
Diametro Tubo
tube diameter

Conico BSPT BSPT thread	
18	R1/8"
14	R1/4"
38	R3/8"
12	R1/2"
34	R3/4"
1	R1"

Misure in mm mm sizes	
4	4mm
5	5mm
6	6mm
8	8mm
10	10mm
12	12mm
14	14mm
16	16mm
19	19mm
25	25mm



DATI TECNICI

Fluidi compatibili	Aria compressa, acqua, fluidi alimentari compatibili con i materiali costruttivi
Applicazioni	Ideali per applicazioni con fluidi altamente corrosivi come acidi, basi deboli, alogeni, alcoli, sali, ossidanti pesanti, detergenti, ecc. Sono resistenti ai raggi UV e alle radiazioni nucleari
Materiali costruttivi	Fluoruro di polivinilidene (PVDF)
Filettature	Gas Conica BSPT da R1/8" a R1"
Pressione d'esercizio	sino a 14 BAR (200 psi) a 20°C
Temperatura d'esercizio	da -80°F a +226°F / da -20°C a +110°C

Technical specifications

fluid types	compressed air, water, food fluids suitable with construction materials
advantages	to be used with all kind of very corrosive fluids like Acids, Weak bases, Halogens, Alcohols, Salts, Heavy duty oxidants, Detergents, etc. UV resistant, Nuclear resistant.
construction materials	polyvinylidene fluoride (PVDF)
threads	taper gas BSPT from R1/8" to R1"
working pressure	up to 14 BAR (200 psi) to 20°C
working temperature	from -80°F to +226°F / from -20°C to +110°C

Prodotti conformi alla direttiva 2002/95/EC

Prodotti conformi alla direttiva 1907/2006

products in compliance with the directive 2002/95/EC

products in compliance with the directive 1907/2006



PRECAUZIONI

I raccordi di questa serie hanno il filetto in plastica e di conseguenza si consiglia di evitare una forza eccessiva durante l'avvitamento e di teflonare il filetto prima dell'utilizzo in modo tale da prevenire eventuali perdite.



PRECAUTIONS

The product are made in plastic and it's necessary to use teflon tape over the thread for installation in order and to prevent leakage. Be sure to prevent excessive torque when screwing the fittings

I dati tecnici e le quote non sono vincolanti • drawings and technical data are not binding

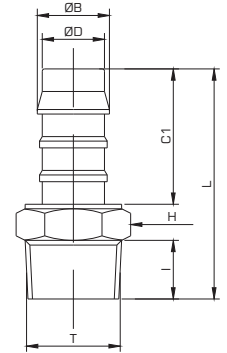
5910



NEW

portagomma maschio conico BSPT • male barb connector BSPT thread

CODE	T	ØD I.D.	I	C1	L	H (Hex)	ØB Cresta barb	Peso (g) weight	
5910TR184	R1/8"	4	8,0	16,0	30,5	11	5,2	1,0	50
5910TR144	R1/4"	4	10,0	16,0	33,5	14	5,2	1,2	50
5910TR185	R1/8"	5	8,0	21,0	35,5	11	6,3	1,0	50
5910TR145	R1/4"	5	10,0	21,0	38,5	14	6,3	1,0	50
5910TR186	R1/8"	6	8,0	23,0	37,5	11	8,0	1,0	50
5910TR146	R1/4"	6	10,0	23,0	40,5	14	8,0	2,0	50
5910TR386	R3/8"	6	10,0	23,0	40,5	17	8,0	3,0	50
5910TR126	R1/2"	6	12,5	23,0	44,0	22	8,0	6,0	50
5910TR346	R3/4"	6	14,5	23,0	46,0	22	8,0	8,2	25
5910TR188	R1/8"	8	8,0	25,0	39,5	11	10,0	2,0	50
5910TR148	R1/4"	8	10,0	25,0	42,5	14	10,0	2,0	50
5910TR388	R3/8"	8	10,0	25,0	42,5	17	10,0	3,0	50
5910TR128	R1/2"	8	12,5	25,0	46,0	22	10,0	6,0	50
5910TR1410	R1/4"	10	10,0	27,0	44,0	14	12,0	1,0	50
5910TR3810	R3/8"	10	10,0	27,0	44,0	17	12,0	4,0	50
5910TR1210	R1/2"	10	12,5	27,0	48,0	22	12,0	6,0	50
5910TR3410	R3/4"	10	14,5	27,0	50,0	27	12,0	9,1	25
5910TR1412	R1/4"	12	10,0	28,0	45,0	14	14,0	4,0	50
5910TR3812	R3/8"	12	10,0	28,0	45,0	17	14,0	4,0	50
5910TR1212	R1/2"	12	12,5	28,0	49,0	22	14,0	7,0	50
5910TR3412	R3/4"	12	14,5	28,0	51,0	27	14,0	9,2	25
5910TR3814	R3/8"	14	10,0	29,5	47,0	17	16,2	6,0	50
5910TR1214	R1/2"	14	12,5	29,5	50,5	22	16,2	7,0	50
5910TR3414	R3/4"	14	14,5	29,5	52,5	27	16,2	9,8	25
5910TR1216	R1/2"	16	12,5	30,0	51,0	22	18,2	8,0	50
5910TR3416	R3/4"	16	14,5	30,0	53,0	27	18,2	10,0	25
5910TR1219	R1/2"	19	12,5	31,0	52,0	22	21,0	9,0	50
5910TR3419	R3/4"	19	14,5	31,0	54,0	27	21,0	15,0	25
5910TR119	R1"	19	21,0	31,0	62,0	27	21,0	18,8	25



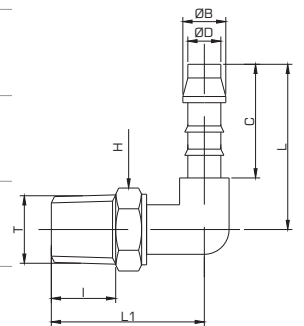
5920



NEW

portagomma a gomito maschio conico BSPT • male elbow barb connector BSPT thread

CODE	T	ØD I.D.	I	C	L	L1	H (Hex)	ØB Cresta barb	Peso (g) weight	
5920TR184	R1/8"	4	8,0	16,0	22,5	21,0	11	5,2	1,0	50
5920TR144	R1/4"	4	10,0	16,0	24,0	21,0	14	5,2	1,0	50
5920TR185	R1/8"	5	8,0	21,0	24,0	21,0	11	6,3	1,0	50
5920TR145	R1/4"	5	10,0	21,0	26,0	21,0	14	6,3	3,0	50
5920TR125	R1/2"	5	13,0	21,0	30,0	21,0	22	6,3	6,0	50
5920TR186	R1/8"	6	8,5	23,5	31,5	23,5	11	8,0	1,0	50
5920TR146	R1/4"	6	10,0	23,0	31,0	26,0	14	8,0	3,0	50
5920TR386	R3/8"	6	10,5	23,0	31,0	26,0	17	8,0	3,0	50
5920TR126	R1/2"	6	13,0	23,5	31,5	30,0	22	8,0	7,0	50
5920TR188	R1/8"	8	8,0	25,0	26,0	26,0	11	10,0	3,0	50
5920TR148	R1/4"	8	10,0	25,0	28,0	26,0	14	10,0	3,0	50
5920TR388	R3/8"	8	10,5	25,0	28,0	26,0	17	10,0	5,0	50
5920TR128	R1/2"	8	13,0	25,0	30,5	26,0	22	10,0	7,0	50
5920TR1410	R1/4"	10	10,0	27,0	28,0	28,0	14	12,0	4,0	50
5920TR3810	R3/8"	10	10,5	27,0	28,0	28,0	17	12,0	6,0	50
5920TR1210	R1/2"	10	13,0	27,0	30,5	28,0	22	12,0	8,0	50
5920TR3410	R3/4"	10	14,5	27,0	33,5	27,0	27	12,0	9,9	25
5920TR1412	R1/4"	12	10,0	28,0	28,0	28,0	14	14,0	7,0	50
5920TR3812	R3/8"	12	10,5	28,0	28,0	28,0	17	14,0	8,0	50
5920TR1212	R1/2"	12	13,0	28,0	32,0	28,0	22	14,0	9,0	50
5920TR3412	R3/4"	12	14,5	28,0	34,0	27,0	27	14,0	12,0	25
5920TR3814	R3/8"	14	10,5	29,5	31,5	31,5	17	16,2	9,0	50
5920TR1214	R1/2"	14	13,0	29,5	34,0	34,0	22	16,2	11,0	50
5920TR3414	R3/4"	14	14,5	29,5	37,5	27,0	27	16,2	14,4	25
5920TR1216	R1/2"	16	12,5	30,0	36,0	36,0	22	18,2	13,0	50
5920TR3416	R3/4"	16	14,5	30,0	39,0	27,0	27	18,2	14,0	25
5920TR1219	R1/2"	19	12,5	31,0	36,0	36,0	22	21,0	15,0	50
5920TR3419	R3/4"	19	15,0	31,0	38,0	27,0	27	21,0	16,6	25



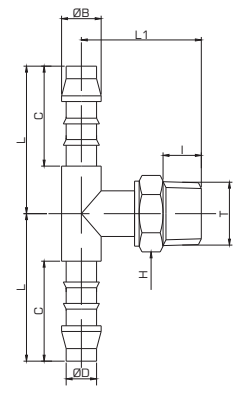
portagomma a T maschio conico BSPT • male tee barb connector BSPT thread

5925

CODE	T	ØD I.D.	I	C	L	L1	H (Hex)	ØB Cresta barb	Peso (g) weight	
5925TR184	R1/8"	4	8,0	16,0	19,5	18,5	11	5,2	1,0	50
5925TR144	R1/4"	4	10,5	16,0	19,5	21,5	14	5,2	2,5	50
5925TR185	R1/8"	5	8,0	21,0	25,0	19,5	11	6,3	1,0	50
5925TR145	R1/4"	5	10,5	21,0	25,0	22,5	14	6,3	3,0	50
5925TR186	R1/8"	6	8,5	23,5	31,5	23,5	11	8,0	1,0	50
5925TR146	R1/4"	6	10,5	23,0	27,5	23,0	14	8,0	3,0	50
5925TR386	R3/8"	6	13,0	23,0	27,5	23,0	17	8,0	4,1	50
5925TR126	R1/2"	6	12,5	23,0	27,5	27,0	22	8,0	7,1	50
5925TR188	R1/8"	8	8,0	25,0	30,5	21,5	11	10,0	3,0	50
5925TR148	R1/4"	8	10,5	25,0	30,5	24,5	14	10,0	5,0	50
5925TR388	R3/8"	8	10,5	25,0	30,5	24,5	17	10,0	6,0	50
5925TR128	R1/2"	8	13,0	25,0	30,5	28,5	22	10,0	7,5	50
5925TR1410	R1/4"	10	10,0	27,0	39,0	28,0	14	12,0	6,4	50
5925TR3810	R3/8"	10	10,5	27,0	39,0	28,0	17	12,0	7,3	50
5925TR1210	R1/2"	10	12,5	27,0	39,0	30,5	22	12,0	9,6	50
5925TR3410	R3/4"	10	13,0	27,0	39,0	31,5	27	12,0	11,8	25
5925TR1412	R1/4"	12	10,0	28,0	41,0	28,0	14	14,0	15,0	50
5925TR3812	R3/8"	12	10,5	28,0	41,0	28,0	17	14,0	9,0	50
5925TR1212	R1/2"	12	13,0	28,0	41,0	31,5	22	14,0	12,6	50
5925TR3412	R3/4"	12	13,0	28,0	41,0	31,5	27	14,0	14,3	25
5925TR3814	R3/8"	14	10,5	29,5	42,5	31,5	17	16,2	12,8	50
5925TR1214	R1/2"	14	12,5	29,5	42,5	34,0	22	16,2	15,0	50
5925TR3414	R3/4"	14	13,0	30,0	42,5	35,0	27	16,2	17,9	25
5925TR1216	R1/2"	16	12,5	30,0	44,0	36,0	22	18,2	15,0	50
5925TR3416	R3/4"	16	13,5	30,0	44,0	37,0	27	18,2	18,6	25
5925TR1219	R1/2"	19	12,5	31,0	45,0	36,0	22	21,0	19,6	50
5925TR3419	R3/4"	19	13,5	31,0	45,0	36,0	27	21,0	21,6	25



NEW



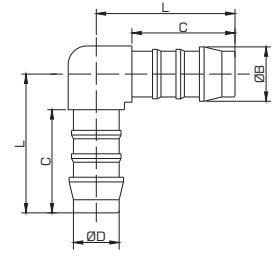
portagomma intermedio a gomito • union elbow barb connector

5930

CODE	ØD I.D.	C	L	ØB Cresta barb	Peso (g) weight	
5930TR4	4	16,0	23,0	5,2	1,0	50
5930TR5	5	21,0	28,5	6,3	1,2	50
5930TR6	6	23,0	31,5	8,0	1,5	50
5930TR8	8	25,0	36,5	10,0	3,0	50
5930TR10	10	27,0	39,0	12,0	4,0	50
5930TR12	12	28,0	40,0	14,0	7,0	50
5930TR14	14	29,5	42,5	16,2	9,0	25
5930TR16	16	30,0	44,0	18,2	11,0	25
5930TR19	19	31,0	45,0	21,0	13,0	25



NEW



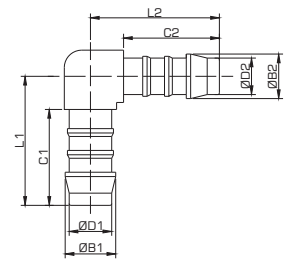
portagomma intermedio a gomito ridotto • reduced union elbow barb connector

5935

CODE	ØD1 I.D.	ØD2 I.D.	C1	L1	C2	L2	ØB1 Cresta barb	ØB2 Cresta barb	Peso (g) weight	
5935TR54	5	4	21,0	28,5	16,0	23,0	6,3	5,2	1,0	50
5935TR65	6	5	23,0	31,5	21,0	28,5	8,0	6,3	1,5	50
5935TR86	8	6	25,0	36,5	23,0	31,5	10,0	8,0	2,0	50
5935TR106	10	6	27,0	39,0	23,0	31,5	12,0	8,0	3,8	50
5935TR108	10	8	27,0	39,0	25,0	36,5	12,0	10,0	4,0	50
5935TR1210	12	10	28,0	40,0	27,0	39,0	14,0	12,0	7,0	50
5935TR1412	14	12	29,5	42,5	28,0	40,0	16,2	14,0	9,0	25
5935TR1614	16	14	30,0	44,0	29,5	42,5	18,2	16,2	11,0	25
5935TR1916	19	16	31,0	45,0	30,0	44,0	21,0	18,2	14,0	25



NEW



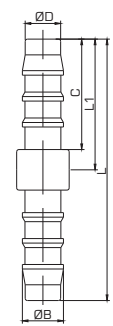
portagomma intermedio diritto • union barb connector

5940

CODE	ØD I.D.	C	L1	L	ØB Cresta barb	Peso (g) weight	
5940TR4	4	16,0	18,0	36,0	5,2	1,0	50
5940TR5	5	21,0	23,5	47,0	6,3	1,2	50
5940TR6	6	23,0	26,0	52,0	8,0	1,5	50
5940TR8	8	25,0	29,0	58,0	10,0	2,0	50
5940TR10	10	27,0	31,5	63,0	12,0	3,0	50
5940TR12	12	28,0	33,0	66,0	14,0	4,0	50
5940TR14	14	29,5	35,5	71,0	16,2	7,5	25
5940TR16	16	30,0	36,0	72,0	18,2	9,0	25
5940TR19	19	31,0	37,0	74,0	21,0	11,0	25



NEW



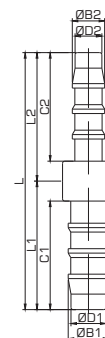
5945

portagomma intermedio diritto ridotto • reduced union barb connector

CODE	ØD1 I.D.	ØD2 I.D.	C1	L1	C2	L2	L	ØB1 Cresta barb	ØB2 Cresta barb	Peso (g) weight	
5945TR54	5	4	21,0	23,5	16,0	18,0	41,5	6,3	5,2	1,0	50
5945TR64	6	4	23,0	26,0	16,0	18,0	44,0	8,0	5,2	1,0	50
5945TR65	6	5	23,0	26,0	21,0	23,5	49,5	8,0	6,3	1,0	50
5945TR85	8	5	25,0	29,5	21,0	23,5	53,0	10,0	6,3	2,0	50
5945TR86	8	6	25,0	29,0	23,0	26,0	55,0	10,0	8,0	3,0	50
5945TR106	10	6	27,0	31,5	23,0	26,0	57,5	12,0	8,0	3,0	50
5945TR108	10	8	27,0	31,5	25,0	29,0	60,5	12,0	10,0	3,0	50
5945TR128	12	8	28,0	33,0	25,0	29,0	62,0	14,0	10,0	3,0	50
5945TR1210	12	10	28,0	33,0	27,0	31,5	64,5	14,0	12,0	5,0	50
5945TR1410	14	10	29,5	35,5	27,0	31,5	67,0	16,2	12,0	6,0	25
5945TR1412	14	12	29,5	35,5	28,0	33,0	68,5	16,2	14,0	7,0	25
5945TR1612	16	12	30,0	36,0	28,0	33,0	69,0	18,2	14,0	7,0	25
5945TR1614	16	14	30,0	36,0	29,5	35,5	71,5	18,2	16,2	8,0	25
5945TR1914	19	14	31,0	37,0	29,5	35,5	72,5	21,0	16,2	10,0	25
5945TR1916	19	16	31,0	37,0	30,0	36,0	73,0	21,0	18,2	10,0	25



NEW



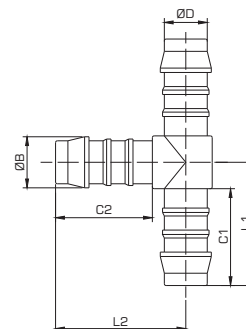
5950

portagomma intermedio a T • union tee barb connector

CODE	ØD I.D.	C1	L1	C2	L2	ØB Cresta barb	Peso (g) weight	
5950TR4	4	16,0	19,0	16,0	20,5	5,2	1,0	50
5950TR5	5	21,0	25,0	21,0	26,5	6,3	1,0	50
5950TR6	6	23,0	27,5	23,0	29,0	8,0	1,0	50
5950TR8	8	25,0	30,5	25,0	32,5	10,0	3,0	50
5950TR10	10	27,0	33,0	27,0	33,5	12,0	5,0	50
5950TR12	12	28,0	34,0	28,0	37,5	14,0	8,0	50
5950TR14	14	29,5	42,5	29,5	42,5	16,2	12,0	25
5950TR16	16	30,0	44,0	30,0	44,0	18,2	13,0	25
5950TR19	19	31,0	45,0	31,0	45,0	21,0	17,0	25



NEW



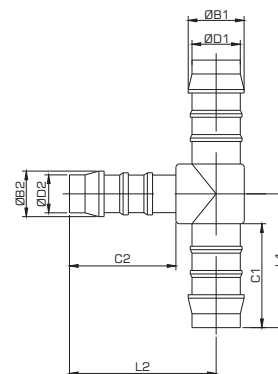
5955

portagomma intermedio a T ridotto • reduced union tee barb connector

CODE	ØD1 I.D.	ØD2 I.D.	C1	L1	C2	L2	ØB1 Cresta barb	ØB2 Cresta barb	Peso (g) weight	
5955TR54	5	4	21,0	25,0	16,0	21,5	6,3	5,2	1,0	50
5955TR65	6	5	23,0	27,5	21,0	27,0	8,0	6,3	2,0	50
5955TR86	8	6	25,0	30,5	23,0	30,5	10,0	8,0	3,0	50
5955TR108	10	8	27,0	33,0	25,0	34,0	12,0	10,0	4,0	50
5955TR1210	12	10	28,0	34,5	27,0	36,5	14,0	12,0	7,0	50
5955TR1412	14	12	29,5	37,0	28,0	38,5	16,2	14,0	11,0	25
5955TR1614	16	14	30,0	39,0	29,5	41,5	18,2	16,2	13,0	25
5955TR1916	19	16	31,0	41,0	30,0	43,0	21,0	18,2	17,0	25



NEW



5960

portagomma intermedio a Y • Y barb connector

CODE	ØD I.D.	C	ØB Cresta barb	Peso (g) weight	
5960TR4	4	16,5	5,2	1,0	50
5960TR6	6	23,5	8,0	1,5	50
5960TR8	8	25,5	10,0	3,0	50
5960TR10	10	24,0	12,0	5,0	50
5960TR17	17	24,0	17,6	7,0	25



NEW

