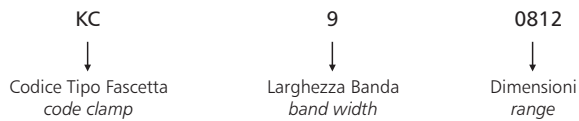


FASCETTE • clamps

LEGENDA CODICE • Model designation



Code	Materiale <i>material</i>
KC9	INOX AISI 430
KCW9	INOX AISI 304
KCX9	INOX AISI 316
FN	Nylon
SG	Acciaio Zincato <i>zinc coated</i>
SGX	INOX AISI 304
CGX	INOX AISI 304



KC9

Fascette stringitubo con banda piena da 9 mm., realizzate in conformità alla norma DIN 3017. Tenute elevate con basse coppie di serraggio sono assicurate dal particolare sistema vite-cassetto. I bordi della fascetta sono arrotondati per evitare eventuali danni ai tubi

Worm drive clamps produced according to DIN 3017 standard, with 9 mm band. High maximum torque and flared edges guarantee excellent performance. The internal surfaces are smooth so as to avoid damages to the tubes.

MATERIALI/materials

KC9: Banda e cassetto acciaio INOX AISI 430, vite in acciaio zincato con trattamento di zincatura bianca trivalente, esente cromo VI (direttiva EU RoHS)

housing & band stainless steel 430, screw zinc plated steel with white trivalent zinc plating, RoHS compliant coating

KCW9: Band, cassetto e vite acciaio INOX AISI 304, band, housing & screw stainless steel 304

KCX9: Banda, cassetto e vite acciaio INOX AISI 316, band, housing & screw stainless steel 316

AISI 316

APPLICAZIONI/applications

- Autoveicoli, Motocicli, Motori
vehicles, motorcycles,automotives
- Macchine Agricole - *agricultural machines*
- Ferramenta - *hardware*
- Termoidraulica e Elettrodomestici
plumbing sanitary & white goods
- Cantieri Navali - *shipyards*
- Motori Marini - *marine engines*
- Industria Petrochimica - *petrochemical industry*
- Industria Alimentare - *food industry*
- Industria Chimica - *chemical industry*

Code	Vite - screw	Cassetto - housing	Banda - band
KC9	Acciaio zincato <i>zinc coated steel</i>	DIN 1.4016 AISI 430	DIN 1.4016 AISI 430
KCW9	DIN 1.4301 AISI 304	DIN 1.4301 AISI 304	DIN 1.4301 AISI 304
KCX9	DIN 1.4401 AISI 316	DIN 1.4401 AISI 316	DIN 1.4401 AISI 316

FASCETTE • clamps



CNS

Fascette in nylon con bordi arrotondati. Testa e dente ad alta resistenza alla trazione. Estremità ricurva per inserimento e montaggio facilitato.
Smooth rounded edges nylon ties. Head and pawl for added strength and durability. Ben Tip on all cable ties allows easier pick-up, insertion and pull-up.

MATERIALI • Materials

- Nylon 6.6

CERTIFICAZIONI • Certifications

- Conformi - *accordance*: CE - 73/23-93/98 CEE
- UL file n. E86244 (classe autoestinguenza - *flammability grade*: UL 94 V2)
- CEI EN 50146
- R.I.N.a. n. ELE 10502CS
- GL Germanischer Lloyd n. 99332 97 HH
- MIL (military standard) SAE AS23190 33671

FN



Fermacavi in nylon utilizzati per il fissaggio di cavi e tubi. Leggeri e di facile applicazione.
Nylon clips used to fix light cables. Light & easy to use

MATERIALI • Materials

- Nylon 6.6

APPLICAZIONI • Applications

- Industria automobilistica - *automotive*
- Industria elettronica ed elettrotecnica - *electronic and eletrotechnical industries*

CIS



Collari isofonici per sostegno tubazioni in ferro e polietilene, conformi normativa DIN 4109
Isophonic clamps for iron & polyethylene pipes according to DIN 4109.

MATERIALI • Materials

- Acciaio zincato e gomma EPDM - *zinc plated steel and EPDM rubber*
- Viti laterali M6x20 - *lateral screws M6x20*
- Spessore banda - *band thickness*: 2 mm.
- Larghezza banda - *band width*: 20 mm.

SG



Fascette con semianello di protezione all'interno della banda, ideali per il serraggio di tubi in PVC ed in gomma morbida o dura; la protezione interna ed i bordi arrotondati evitano pizzicamenti e danneggiamenti ai tubi.
Internal protection ear rings are ideal for clamping hoses in soft rubber or PVC; the insert prevents damage of the hose.

MATERIALI • Materials

SG: banda in acciaio zincato, semianello in acciaio INOX 304 trattamento di zincatura bianca esente cromo VI spessore 8 mm. (direttiva EU RoHs)

housing zinc plates steel, ring in stainless steel 430, white trivalent zinc-plating 8 micron minimum. No Chromium VI used for surface treatment (according to EU RoHs)

APPLICAZIONI • Applications

- Apparecchi elettromedicali - *medical equipments*
- Industria Elettrotecnica - *electrotechnics industry*
- Industria Saldatura - *welding equipments*
- Impianti di Spillatura - *dispensing equipments*

SGX: acciaio INOX AISI 304 - *stainless steel 304*

FASCETTE • clamps



CGX

Fascette con semianello di protezione all'interno della banda, ideali per il serraggio dei tubi in PVC ed in gomma morbida o dura; la protezione interna ed i bordi arrotondati evitano pizzicamenti e danneggiamenti ai tubi
Ear clips with ring are ideals for clamping of hoses in soft rubber or PVC; the insert bridges prevent damage on the hoses.

MATERIALI • Materials:

- Acciaio INOX AISI 304 - *stainless steel 304*

APPLICAZIONI • Applications

- Apparecchi elettromedicali - *medical equipments*
- Industria Elettronica - *electrotecnics industry*
- Apparecchi di Saldatura - *welding equipments*
- Impianti di Spillatura - *dispensing equipments*



5090

Fascetta stringitubo in resina acetilica - *acetal resin snap clip*

DATI TECNICI

Materiali utilizzati	Resina Acetalica
Colore	Nero
Pressione d'esercizio	14 BAR (200 psi)
Temperatura d'esercizio	da -4°C a +90°C
Caratteristiche	resistenza alla corrosione e bassa tossicità

Technical specifications

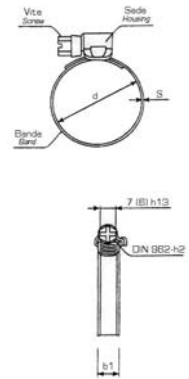
<i>materials used</i>	<i>acetal resin</i>
<i>colour</i>	<i>black</i>
<i>working pressure</i>	<i>14 BAR (200 psi)</i>
<i>working temperature</i>	<i>from -4°C to +90°C</i>
<i>advantages</i>	<i>strong, durable, low toxicity</i>

FASCETTE • clamps

fascetta stringitubo DIN 3017, con banda 9mm, cassetto in INOX AISI 430 e vite in acciaio zincato
worm drive hose clamp to DIN 3017, band width 9mm, housing in INOX AISI 430 and screw in zinc coated steel

KC9

CODE	d - Campo Ø size range (mm)	Larghezza banda band width	b1 - Vite screw mm	S Spessore banda band thickness	Coppia di Serraggio tightening torque (Nm)
KC9-0812	8-12				100
KC9-1016	10-16				100
KC9-1220	12-20				100
KC9-1222 new	12-22				100
KC9-1625	16-25				100
KC9-1627 new	16-27				100
KC9-2032	20-32				100
KC9-2535 new	25-35	9,0	7,0	0,6	4,5
KC9-2540	25-40				100
KC9-3045 new	30-45				100
KC9-3250	32-50				100
KC9-4060 new	40-60				100
KC9-5070 new	50-70				100
KC9-6080	60-80				100
KC9-7090	70-90				100



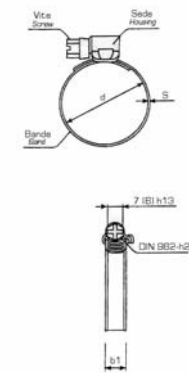
fascetta stringitubo DIN 3017, con banda 9mm, cassetto e vite in INOX AISI 304
worm drive hose clamp to DIN 3017, band width 9mm, housing & screw in INOX AISI 304

KCW9

CODE	d - Campo Ø size range (mm)	Larghezza banda band width	b1 - Vite screw mm	S Spessore banda band thickness	Coppia di Serraggio tightening torque (Nm)
KCW9-0812	8-12				100
KCW9-1016	10-16				100
KCW9-1220	12-20				100
KCW9-1625	16-25				100
KCW9-2032	20-32				100
KCW9-2535	25-35				100
KCW9-2540	25-40	9,0	7,0	0,6	4,5
KCW9-3045	30-45				100
KCW9-3250	32-50				100
KCW9-4060	40-60				100
KCW9-5070	50-70				100
KCW9-6080	60-80				100
KCW9-7090	70-90				100



NEW



fascetta stringitubo DIN 3017 con banda 9 mm., cassetto e vite in INOX AISI 316
worm drive hose clamp to DIN 3017, band width 9mm, housing and screw in INOX AISI 316

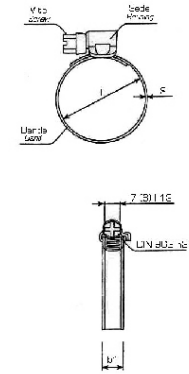
AISI 316

KCX9

CODE	d - Campo Ø size range (mm)	Larghezza banda band width	b1 - Vite screw mm	S Spessore banda band thickness	Coppia di Serraggio tightening torque (Nm)
KCX9-0812	8-12				100
KCX9-1016	10-16				100
KCX9-1220	12-20				100
KCX9-1625	16-25				100
KCX9-2032	16-27				100
KCX9-2535	25-35				100
KCX9-2540	25-40	9,0	7,0	0,6	4,5
KCX9-3045	30-45				100
KCX9-3250	32-50				100
KCX9-4060	40-60				100
KCX9-5070	50-70				100
KCX9-6080	60-80				100
KCX9-7090	70-90				100



NEW



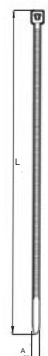
fascetta in nylon standard con bordi arrotondati • smooth rounded edge standard nylon tie

CNS

CODE	L (mm)	A (mm)	Tenuta Minima tensile strength (Kg)	Ø Max Utile (mm) Ø max bundle (mm)
CNS 03	98	2,5	8,0	19
CNS 06	160	2,5	8,0	40
CNS 09	140	3,6	18,0	34
CNS 10	290	3,6	18,0	77
CNS 11	160	4,5	22,0	40
CNS 14	200	3,6	18,0	50
CNS 15	200	4,5	22,0	50
CNS 17	286	4,5	22,0	75
CNS 19	360	4,5	22,0	100
CNS 23	180	7,6	54,0	48
CNS 26	292	7,6	54,0	75
CNS 27	365	7,6	54,0	100
CNS 31	540	7,6	54,0	160



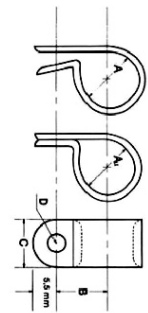
NEW



FASCETTE • clamps

fermacavi in nylon • nylon snap clip

FN	CODE	ØA (mm)	ØA1 (mm)	C - Larghezza Banda band width (mm)	B - Interasse distance (mm)	D - Foro Attacco fastening hole (mm)	Spessore Banda band thickness (mm)	
	FN003	3,2	2,9	9,5	8,3	5,1	1,3	500
	FN004	4,8	4,4		500			
	FN006	6,3	5,9		500			
	FN008	7,9	7,5		500			
	FN009	9,5	9,1		500			
	FN011	11,1	10,7		500			
	FN012	12,7	12,3		500			
	FN014	14,3	13,9		300			
NEW	FN016	15,9	15,5	12,7	15,8	5,1	1,5	300
	FN017	17,4	17,1		19,1			300
	FN019	19,0	18,6		19,9			300
	FN020	20,6	20,2		20,7			300
	FN022	22,2	21,9		21,5			100
	FN025	25,4	25,0		23,1			100
	FN028	28,6	28,0		24,6			100
	FN030	30,1	29,6		25,4			100
	FN032	31,8	31,2		27,0			100
	FN035	34,9	34,3		28,6			100
FN038	38,1	37,5	30,1	100				



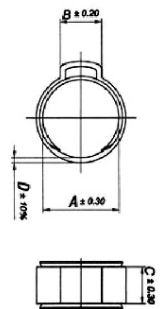
collare isofonico per sostegno tubazioni rigide DIN 4109 • isophonic clamp for rigid tubes DIN 4109

CIS	CODE	Ø	Ø Campo size range (mm)	Filettatura thread	Spessore Banda band thickness (mm)	Larghezza Banda band width (mm)	
	CIS15	1/4"	13-17	M8	2	20	10
	CIS22	1/2"	20-24	M8			10
	CIS28	3/4"	26-30	M8			10

NEW

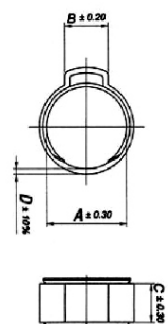
fascetta stringitubo antigrinza senza vite in acciaio zincato • worm drive hose smooth inside clamp without screw, zinc plated steel

SG	CODE	Ø Campo Ø size range (mm)	A - Ø fornitura diameter supplied	D - Spessore banda band thickness (mm)	B - Larghezza orecchia ear width (mm)	C - Larghezza banda band width (mm)	
	SG090	7,5-8,5	8,5	0,8	5,5	6,0	100
	SG100	8,0-9,5	9,5	0,8	6,0	6,0	100
	SG110	9,0-10,5	10,5	0,8	6,5	6,5	100
	SG120	10,0-11,5	11,5	0,8	7,0	6,5	100
	SG128	10,5-12,5	12,5	0,9	7,5	6,5	100
	SG140	11,5-13,5	13,5	1,0	8,0	7,0	100
	SG160	13,0-15,3	15,3	1,1	8,5	7,0	100
	SG180	15,0-17,3	17,3	1,2	9,5	7,0	100



fascetta stringitubo antigrinza senza vite in INOX AISI 304 • worm drive hose smooth inside clamp without screw in INOX AISI 304

SGX	CODE	Ø Campo Ø size range (mm)	A - Ø fornitura diameter supplied (mm)	D - Spessore banda band thickness (mm)	B - Larghezza orecchia ear width (mm)	C - Larghezza Banda band width (mm)	
	SGX090	7,5-8,5	8,5	0,8	5,5	6,0	100
	SGX100	8,0-9,5	9,5	0,8	6,0	6,0	100
	SGX110	9,0-10,5	10,5	0,8	6,5	6,5	100
	SGX120	10,0-11,5	11,5	0,8	7,0	6,5	100
	SGX128	10,5-12,5	12,5	0,9	7,5	6,5	100
	SGX140	11,5-13,5	13,5	1,0	8,0	7,0	100
	SGX150	12,4-14,5	14,5	1,0	8,0	7,0	100
	SGX160	13,0-15,3	15,3	1,0	8,5	7,0	100
	SGX170	14,5-16,3	16,3	1,0	9,0	7,0	100
	SGX180	15,0-17,3	17,3	1,0	9,5	7,0	100
NEW	SGX190	16,0-18,3	18,3	1,0	9,5	7,5	100
	SGX200	17,0-19,3	19,3	1,0	10,0	7,5	100



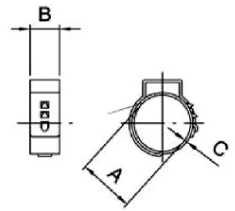
FASCETTE • clamps

fascetta stringitubo antigirina in INOX AISI 304 • worm drive hose smooth inside clamp INOX AISI 304

CGX



CODE	Ø Campo Ø size range (mm)	A - Ø fornitura diameter supplied (mm)	C - Spessore banda band thickness (mm)	B- Larghezza Banda band width (mm)	
CGX105	8,8-10,5	10,5	0,5	5,0	100
CGX113	9,6-11,3	11,3	0,5	5,0	100
CGX133	10,8-13,3	13,3	0,6	7,0	100
CGX140	11,5-14,0	14,0	0,6	7,0	100
CGX145	12,0-14,5	14,5	0,6	7,0	100



TEN

tenaglia • pincer

CODE	
TEN 1099	1



NEW

5090

fascetta stringitubo in resina acetilica
cetal resin snap clip



CODE	D (mm)	
5090TR810	8-10	50
5090TR1012	10-12	50
5090TR1113	11-13	50
5090TR1315	13-15	50
5090TR1416	14-16	50
5090TR1517	15-17	50
5090TR1618	16-18	50
5090TR1719	17-19	50
5090TR1820	18-20	50
5090TR2022	20-22	50
5090TR2123	21-23	50
5090TR2325	23-25	50
5090TR2628	26-28	50
5090TR3032	30-32	50
5090TR3537	35-37	50
5090TR4446	44-46	50
5090TR4749	47-49	50