

RACCORDI PORTAGOMMA IN NYLON

nylon barb connectors

LEGENDA CODICE • model designation

5010TR

↓
Codice
code

18

↓
Filetto
thread size

4

↓
Diametro Tubo
tube diameter

Conico BSPT BSPT thread	
18	R1/8"
14	R1/4"
38	R3/8"
12	R1/2"
34	R3/4"
1	R1

Filetto NPT NPT thread	
18	N1/8"
14	N1/4"
38	N3/8"
12	N1/2"
34	N3/4"

Misure in mm mm sizes		Misure in pollici inch sizes	
4	4mm	532	5/32"
5	5mm	316	3/16"
6	6mm	14	1/4"
8	8mm	516	5/16"
10	10mm	38	3/8"
12	12mm	12	1/2"
14	14mm	58	5/8"
16	16mm	34	3/4"
19	19mm		
25	25mm		



DATI TECNICI

Fluidi compatibili	Aria compressa, acqua, fluidi alimentari compatibili con i materiali costruttivi
Materiali costruttivi	Nylon 66
Filettature	Gas Conica BSPT da R1/8" a R1" NPT da N1/8" a N3/4"
Pressione d'esercizio	sino a 14 BAR (200 psi) a 20°C
Temperatura d'esercizio	da -5°F a +230°F / da -20°C a +110°C
Caratteristiche	Compatibili per connessioni con tubi in plastica, gomma e PVC morbido

Technical specifications

fluid types	compressed air, water, food fluids suitable with construction materials
construction materials	nylon 66
threads	taper gas BSPT from R1/8" to R1" NPT from N1/8" to N3/4"
working pressure	up to 14 BAR (200 psi) at 20°C
working temperature	from -5°F to +230°F / from -20°C to +110°C
features	suitable for connecting plastic, rubber or soft PVC tubes

Prodotti conformi alla direttiva 2002/95/EC **RoHS**

Prodotti conformi alla direttiva 1907/2006 **REACH**

products in compliance with the directive 2002/95/EC **RoHS**

products in compliance with the directive 1907/2006 **REACH**



PRECAUZIONI

I raccordi di questa serie hanno il filetto in plastica e di conseguenza si consiglia di evitare una forza eccessiva durante l'avvitamento e di teflonare il filetto prima dell'utilizzo in modo tale da prevenire eventuali perdite.



PRECAUTIONS

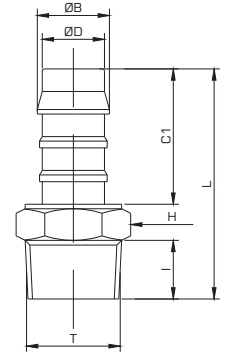
The product are made in plastic and it's necessary to use teflon tape over the thread for installation in order and to prevent leakage. Be sure to prevent excessive torque when screwing the fittings

5010



portagomma maschio conico BSPT • male barb connector BSPT thread

CODE	T	ØD I.D.	I	C1	L	H (Hex)	ØB Cresta barb	Peso (g) weight	
5010TR184	R1/8"	4	8,0	16,0	30,5	11	5,2	1,0	50
5010TR144	R1/4"	4	10,0	16,0	33,5	14	5,2	1,2	50
5010TR185	R1/8"	5	8,0	21,0	35,5	11	6,3	1,0	50
5010TR145	R1/4"	5	10,0	21,0	38,5	14	6,3	1,0	50
5010TR186	R1/8"	6	8,0	23,0	37,5	11	8,0	1,0	50
5010TR146	R1/4"	6	10,0	23,0	40,5	14	8,0	2,0	50
5010TR386	R3/8"	6	10,0	23,0	40,5	17	8,0	3,0	50
5010TR126	R1/2"	6	12,5	23,0	44,0	22	8,0	6,0	50
5010TR346	R3/4"	6	14,5	23,0	46,0	22	8,0	8,2	25
5010TR188	R1/8"	8	8,0	25,0	39,5	11	10,0	2,0	50
5010TR148	R1/4"	8	10,0	25,0	42,5	14	10,0	2,0	50
5010TR388	R3/8"	8	10,0	25,0	42,5	17	10,0	3,0	50
5010TR128	R1/2"	8	12,5	25,0	46,0	22	10,0	6,0	50
5010TR1410	R1/4"	10	10,0	27,0	44,0	14	12,0	1,0	50
5010TR3810	R3/8"	10	10,0	27,0	44,0	17	12,0	4,0	50
5010TR1210	R1/2"	10	12,5	27,0	48,0	22	12,0	6,0	50
5010TR3410	R3/4"	10	14,5	27,0	50,0	27	12,0	9,1	25
5010TR1412	R1/4"	12	10,0	28,0	45,0	14	14,0	4,0	50
5010TR3812	R3/8"	12	10,0	28,0	45,0	17	14,0	4,0	50
5010TR1212	R1/2"	12	12,5	28,0	49,0	22	14,0	7,0	50
5010TR3412	R3/4"	12	14,5	28,0	51,0	27	14,0	9,2	25
5010TR3814	R3/8"	14	10,0	29,5	47,0	17	16,2	6,0	50
5010TR1214	R1/2"	14	12,5	29,5	50,5	22	16,2	7,0	50
5010TR3414	R3/4"	14	14,5	29,5	52,5	27	16,2	9,8	25
5010TR1216	R1/2"	16	12,5	30,0	51,0	22	18,2	8,0	50
5010TR3416	R3/4"	16	14,5	30,0	53,0	27	18,2	10,0	25
5010TR1219	R1/2"	19	12,5	31,0	52,0	22	21,0	9,0	50
5010TR3419	R3/4"	19	14,5	31,0	54,0	27	21,0	15,0	25
5010TR119	R1"	19	21,0	31,0	62,0	27	21,0	18,8	25

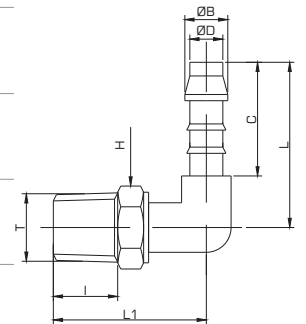


5020



portagomma a gomito maschio conico BSPT • male elbow barb connector BSPT thread

CODE	T	ØD I.D.	I	C	L	L1	H (Hex)	ØB Cresta barb	Peso (g) weight	
5020TR184	R1/8"	4	8,0	16,0	22,5	21,0	11	5,2	1,0	50
5020TR144	R1/4"	4	10,0	16,0	22,5	24,0	14	5,2	1,0	50
5020TR185	R1/8"	5	8,0	21,0	28,0	24,0	11	6,3	1,0	50
5020TR145	R1/4"	5	10,0	21,0	28,0	26,0	14	6,3	3,0	50
5020TR125	R1/2"	5	13,0	21,0	30,0	30,0	22	6,3	6,0	50
5020TR186	R1/8"	6	8,5	23,5	31,5	23,5	11	8,0	1,0	50
5020TR146	R1/4"	6	10,0	23,0	31,0	26,0	14	8,0	3,0	50
5020TR386	R3/8"	6	10,5	23,0	31,0	26,0	17	8,0	3,0	50
5020TR126	R1/2"	6	13,0	23,5	31,5	30,0	22	8,0	7,0	50
5020TR188	R1/8"	8	8,0	25,0	36,0	26,0	11	10,0	3,0	50
5020TR148	R1/4"	8	10,0	25,0	36,0	28,0	14	10,0	3,0	50
5020TR388	R3/8"	8	10,5	25,0	36,0	28,0	17	10,0	5,0	50
5020TR128	R1/2"	8	13,0	25,0	36,0	30,5	22	10,0	7,0	50
5020TR1410	R1/4"	10	10,0	27,0	39,0	28,0	14	12,0	4,0	50
5020TR3810	R3/8"	10	10,5	27,0	39,0	28,0	17	12,0	6,0	50
5020TR1210	R1/2"	10	13,0	27,0	39,0	30,5	22	12,0	8,0	50
5020TR3410	R3/4"	10	14,5	27,0	39,0	33,5	27	12,0	9,9	25
5020TR1412	R1/4"	12	10,0	28,0	41,0	28,0	14	14,0	7,0	50
5020TR3812	R3/8"	12	10,5	28,0	41,0	28,0	17	14,0	8,0	50
5020TR1212	R1/2"	12	13,0	28,0	41,0	32,0	22	14,0	9,0	50
5020TR3412	R3/4"	12	14,5	28,0	41,0	34,0	27	14,0	12,0	25
5020TR3814	R3/8"	14	10,5	29,5	42,5	31,5	17	16,2	9,0	50
5020TR1214	R1/2"	14	13,0	29,5	42,5	34,0	22	16,2	11,0	50
5020TR3414	R3/4"	14	14,5	29,5	42,5	37,5	27	16,2	14,4	25
5020TR1216	R1/2"	16	12,5	30,0	44,0	36,0	22	18,2	13,0	50
5020TR3416	R3/4"	16	14,5	30,0	44,0	39,0	27	18,2	14,0	25
5020TR1219	R1/2"	19	12,5	31,0	45,0	36,0	22	21,0	15,0	50
5020TR3419	R3/4"	19	15,0	31,0	45,0	38,0	27	21,0	16,6	25

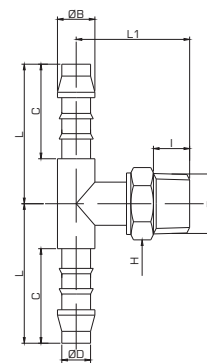


portagomma a T maschio conico BSPT • male tee barb connector BSPT thread

5025



CODE	T	ØD I.D.	I	C	L	L1	H (Hex)	ØB Cresta barb	Peso (g) weight	
5025TR184	R1/8"	4	8,0	16,0	19,5	18,5	11	5,2	1,0	50
5025TR144	R1/4"	4	10,5			21,5	14		2,5	50
5025TR185	R1/8"	5	8,0	21,0	25,0	19,5	11	6,3	1,0	50
5025TR145	R1/4"	5	10,5			22,5	14		3,0	50
5025TR186	R1/8"	6	8,5	23,5	31,5	23,5	11		1,0	50
5025TR146	R1/4"	6	10,5	23,0	27,5	23,0	14	8,0	3,0	50
5025TR386	R3/8"	6	13,0	23,0	27,5	23,0	17		4,1	50
5025TR126	R1/2"	6	12,5	23,0	27,5	27,0	22		7,1	50
5025TR188	R1/8"	8	8,0			21,5	11		3,0	50
5025TR148	R1/4"	8	10,5	25,0	30,5	24,5	14	10,0	5,0	50
5025TR388	R3/8"	8	10,5			24,5	17		6,0	50
5025TR128	R1/2"	8	13,0			28,5	22		7,5	50
5025TR1410	R1/4"	10	10,0			28,0	14		6,4	50
5025TR3810	R3/8"	10	10,5	27,0	39,0	28,0	17	12,0	7,3	50
5025TR1210	R1/2"	10	12,5			30,5	22		9,6	50
5025TR3410	R3/4"	10	13,0			31,5	27		11,8	25
5025TR1412	R1/4"	12	10,0			28,0	14		15,0	50
5025TR3812	R3/8"	12	10,5	28,0	41,0	28,0	17	14,0	9,0	50
5025TR1212	R1/2"	12	13,0			31,5	22		12,6	50
5025TR3412	R3/4"	12	13,0			31,5	27		14,3	25
5025TR3814	R3/8"	14	10,5	29,5		31,5	17		12,8	50
5025TR1214	R1/2"	14	12,5	29,5	42,5	34,0	22	16,2	15,0	50
5025TR3414	R3/4"	14	13,0	30,0		35,0	27		17,9	25
5025TR1216	R1/2"	16	12,5	30,0	44,0	36,0	22	18,2	15,0	50
5025TR3416	R3/4"	16	13,5			37,0	27		18,6	25
5025TR1219	R1/2"	19	12,5	31,0	45,0	36,0	22	21,0	19,6	50
5025TR3419	R3/4"	19	13,5			36,0	27		21,6	25

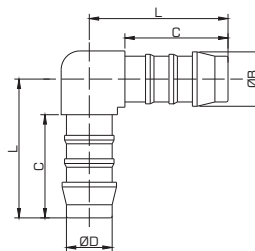


portagomma intermedio a gomito • union elbow barb connector

5030



CODE	ØD I.D.	C	L	ØB Cresta barb	Peso (g) weight	
5030TR4	4	16,0	23,0	5,2	1,0	50
5030TR5	5	21,0	28,5	6,3	1,2	50
5030TR6	6	23,0	31,5	8,0	1,5	50
5030TR8	8	25,0	36,5	10,0	3,0	50
5030TR10	10	27,0	39,0	12,0	4,0	50
5030TR12	12	28,0	40,0	14,0	7,0	50
5030TR14	14	29,5	42,5	16,2	9,0	25
5030TR16	16	30,0	44,0	18,2	11,0	25
5030TR19	19	31,0	45,0	21,0	13,0	25

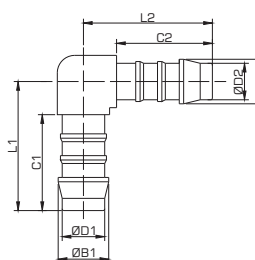


portagomma intermedio a gomito ridotto • reduced union elbow barb connector

5035



CODE	ØD1 I.D.	ØD2 I.D.	C1	L1	C2	L2	ØB1 Cresta barb	ØB2 Cresta barb	Peso (g) weight	
5035TR54	5	4	21,0	28,5	16,0	23,0	6,3	5,2	1,0	50
5035TR65	6	5	23,0	31,5	21,0	28,5	8,0	6,3	1,5	50
5035TR86	8	6	25,0	36,5	23,0	31,5	10,0	8,0	2,0	50
5035TR106	10	6	27,0	39,0	23,0	31,5	12,0	8,0	3,8	50
5035TR108	10	8	27,0	39,0	25,0	36,5	12,0	10,0	4,0	50
5035TR1210	12	10	28,0	40,0	27,0	39,0	14,0	12,0	7,0	50
5035TR1412	14	12	29,5	42,5	28,0	40,0	16,2	14,0	9,0	25
5035TR1614	16	14	30,0	44,0	29,5	42,5	18,2	16,2	11,0	25
5035TR1916	19	16	31,0	45,0	30,0	44,0	21,0	18,2	14,0	25

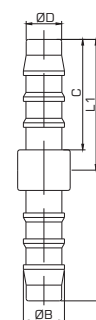


portagomma intermedio diritto • union barb connector

5040



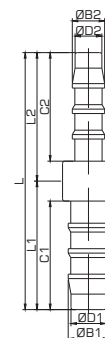
CODE	ØD I.D.	C	L1	L	ØB Cresta barb	Peso (g) weight	
5040TR4	4	16,0	18,0	36,0	5,2	1,0	50
5040TR5	5	21,0	23,5	47,0	6,3	1,2	50
5040TR6	6	23,0	26,0	52,0	8,0	1,5	50
5040TR8	8	25,0	29,0	58,0	10,0	2,0	50
5040TR10	10	27,0	31,5	63,0	12,0	3,0	50
5040TR12	12	28,0	33,0	66,0	14,0	4,0	50
5040TR14	14	29,5	35,5	71,0	16,2	7,5	25
5040TR16	16	30,0	36,0	72,0	18,2	9,0	25
5040TR19	19	31,0	37,0	74,0	21,0	11,0	25



5045

portagomma intermedio diritto ridotto • reduced union barb connector

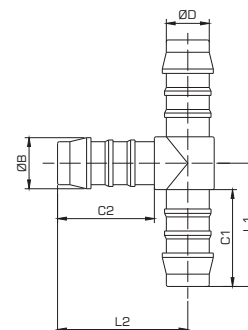
CODE	ØD1 I.D.	ØD2 I.D.	C1	L1	C2	L2	L	ØB1 Cresta barb	ØB2 Cresta barb	Peso (g) weight	
5045TR54	5	4	21,0	23,5	16,0	18,0	41,5	6,3	5,2	1,0	50
5045TR64	6	4	23,0	26,0	16,0	18,0	44,0	8,0	5,2	1,0	50
5045TR65	6	5	23,0	26,0	21,0	23,5	49,5	8,0	6,3	1,0	50
5045TR85	8	5	25,0	29,5	21,0	23,5	53,0	10,0	6,3	2,0	50
5045TR86	8	6	25,0	29,0	23,0	26,0	55,0	10,0	8,0	3,0	50
5045TR106	10	6	27,0	31,5	23,0	26,0	57,5	12,0	8,0	3,0	50
5045TR108	10	8	27,0	31,5	25,0	29,0	60,5	12,0	10,0	3,0	50
5045TR128	12	8	28,0	33,0	25,0	29,0	62,0	14,0	10,0	3,0	50
5045TR1210	12	10	28,0	33,0	27,0	31,5	64,5	14,0	12,0	5,0	50
5045TR1410	14	10	29,5	35,5	27,0	31,5	67,0	16,2	12,0	6,0	25
5045TR1412	14	12	29,5	35,5	28,0	33,0	68,5	16,2	14,0	7,0	25
5045TR1612	16	12	30,0	36,0	28,0	33,0	69,0	18,2	14,0	7,0	25
5045TR1614	16	14	30,0	36,0	29,5	35,5	71,5	18,2	16,2	8,0	25
5045TR1914	19	14	31,0	37,0	29,5	35,5	72,5	21,0	16,2	10,0	25
5045TR1916	19	16	31,0	37,0	30,0	36,0	73,0	21,0	18,2	10,0	25



5050

portagomma intermedio a T • union tee barb connector

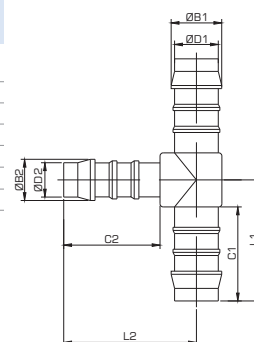
CODE	ØD I.D.	C1	L1	C2	L2	ØB Cresta barb	Peso (g) weight	
5050TR4	4	16,0	19,0	16,0	20,5	5,2	1,0	50
5050TR5	5	21,0	25,0	21,0	26,5	6,3	1,0	50
5050TR6	6	23,0	27,5	23,0	29,0	8,0	1,0	50
5050TR8	8	25,0	30,5	25,0	32,5	10,0	3,0	50
5050TR10	10	27,0	33,0	27,0	33,5	12,0	5,0	50
5050TR12	12	28,0	34,0	28,0	37,5	14,0	8,0	50
5050TR14	14	29,5	42,5	29,5	42,5	16,2	12,0	25
5050TR16	16	30,0	44,0	30,0	44,0	18,2	13,0	25
5050TR19	19	31,0	45,0	31,0	45,0	21,0	17,0	25



5055

portagomma intermedio a T ridotto • reduced union tee barb connector

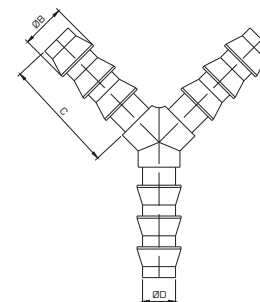
CODE	ØD1 I.D.	ØD2 I.D.	C1	L1	C2	L2	ØB1 Cresta barb	ØB2 Cresta barb	Peso (g) weight	
5055TR54	5	4	21,0	25,0	16,0	21,5	6,3	5,2	1,0	50
5055TR65	6	5	23,0	27,5	21,0	27,0	8,0	6,3	2,0	50
5055TR86	8	6	25,0	30,5	23,0	30,5	10,0	8,0	3,0	50
5055TR108	10	8	27,0	33,0	25,0	34,0	12,0	10,0	4,0	50
5055TR1210	12	10	28,0	34,5	27,0	36,5	14,0	12,0	7,0	50
5055TR1412	14	12	29,5	37,0	28,0	38,5	16,2	14,0	11,0	25
5055TR1614	16	14	30,0	39,0	29,5	41,5	18,2	16,2	13,0	25
5055TR1916	19	16	31,0	41,0	30,0	43,0	21,0	18,2	17,0	25



5060

portagomma intermedio a Y • Y barb connector

CODE	ØD I.D.	C	ØB Cresta barb	Peso (g) weight	
5060TR4	4	16,5	5,2	1,0	50
5060TR6	6	23,5	8,0	1,5	50
5060TR8	8	25,5	10,0	3,0	50
5060TR10	10	24,0	12,0	5,0	50
5060TR17	17	24,0	17,6	7,0	25



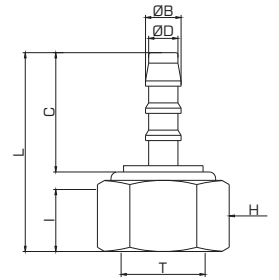
5070



NEW

portagomma diritto femmina conico BSPT • female barb connector BSPT thread

CODE	T	ØD I.D.	I	C	L	H (Hex)	ØB Cresta barb	Peso (g) weight	
5070TR184	R1/8"	4	10,0	16,0	27,5	13	5,2	1,0	50
5070TR144	R1/4"		14,2		31,7	16	6,3	1,0	50
5070TR185	R1/8"		10,0		32,5	13	5,2	1,2	50
5070TR145	R1/4"	5	15,0	21,0	36,7	16	6,3	1,5	50
5070TR385	R3/8"		14,5		40,2	20	8,0	2,0	50
5070TR146	R1/4"		15,0		38,7	16	10,0	2,0	50
5070TR386	R3/8"	6	14,5	23,0	39,0	20	6,3	3,0	50
5070TR126	R1/2"		17,0		41,5	24	8,0	6,0	50
5070TR148	R1/4"		14,2		40,2	16	10,0	2,0	50
5070TR388	R3/8"	8	14,5	25,0	41,0	20	12,0	2,0	50
5070TR128	R1/2"		17,0		43,5	24	8,0	3,0	50
5070TR348	R3/4"		17,0		43,5	30	10,0	6,0	25
5070TR3810	R3/8"		14,5		43,0	20	12,0	4,0	50
5070TR1210	R1/2"	10	17,0	27,0	45,5	24	14,0	6,0	50
5070TR3410	R3/4"		17,0		45,5	30	16,2	9,0	25
5070TR1212	R1/2"		17,0		46,5	24	10,0	8,0	50
5070TR3412	R3/4"	12	17,0	28,0	46,5	30	12,0	10,0	25
5070TR1214	R1/2"		17,0		48,0	24	14,0	8,0	50
5070TR3414	R3/4"		17,0		48,0	30	16,2	10,0	25
5070TR3416	R3/4"	16	17,0	30,0	48,5	30	18,2	11,0	25
5070TR3419	R3/4"	19	17,0	31,0	49,5	30	21,0	16,0	25

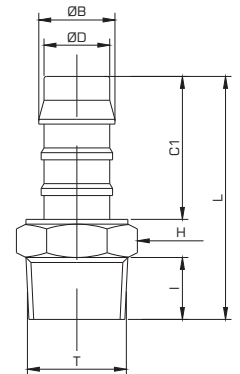


5015



portagomma diritto maschio NPT • male barb connector NPT thread

CODE	T	ØD I.D.	I	C1	L	H (Hex)	ØB Cresta barb	Peso (g) weight	
5015TR18532	N1/8"	5/32"	8,0	16,0	30,5	11	5,3	1,0	50
5015TR18316	N1/8"		9,0		20,5	11		1,0	50
5015TR14316	N1/4"	3/16"	13,0	21,0	40,5	14	6,3	1,0	50
5015TR1814	N1/8"		9,0		32,5	17		1,5	50
5015TR14	N1/4"	1/4"	13,0	23,0	42,5	22	8,0	1,0	50
5015TR3814	N3/8"		13,0		44,0	11		3,0	50
5015TR1214	N1/2"		18,0		49,0	14		6,4	50
5015TR18516	N1/8"		9,0		34,5	17		1,8	50
5015TR14516	N1/4"	5/16"	13,0	25,0	44,5	22	9,8	2,7	50
5015TR38516	N3/8"		13,0		46,0	14		4,1	50
5015TR12516	N1/2"		18,0		51,0	22		6,8	50
5015TR1438	N1/4"		13,0		46,5	22		3,0	50
5015TR38	N3/8"		13,0		48,0	27		5,0	50
5015TR1238	N1/2"	3/8"	18,0	27,0	53,0	22	12,0	7,4	50
5015TR3438	N3/4"		19,0		54,0	27		9,8	25
5015TR1412	N1/4"		13,0		47,5	22		3,5	50
5015TR3812	N3/8"		13,0		49,0	17,5		5,0	50
5015TR12	N1/2"	1/2"	18,0	28,0	54,0	27	13,8	7,6	50
5015TR3412	N3/4"		19,0		55,0	22		10,3	25
5015TR1258	N1/2"	5/8"	18,0	30,0	56,0	22	17,5	8,5	50
5015TR3458	N3/4"		19,0		57,0	27		11,2	25
5015TR1234	N1/2"	3/4"	18,0	31,0	57,0	22	21,0	9,1	50
5015TR34	N3/4"		19,0		58,0	27		11,9	25

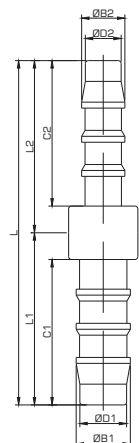


5047



portagomma intermedio diritto ridotto tubo in pollici • reduced inch size union barb connector

CODE	ØD1 I.D.	ØD2 I.D.	C1	L1	C2	L2	L	ØB1 Cresta barb	ØB2 Cresta barb	Peso (g) weight	
5047TR14316	1/4"	3/16"	23,0	26,0	21,0	23,5	49,5	8,0	6,3	1,0	50
5047TR516316	5/16"	3/16"	25,0	29,5	21,0	23,5	53,0	9,8	6,3	2,0	50
5047TR51614	5/16"	1/4"	25,0	29,0	23,0	26,0	55,0	9,8	8,0	2,1	50
5047TR3814	3/8"	1/4"	27,0	31,5	23,0	27,0	58,5	12,1	7,8	2,5	50
5047TR38516	3/8"	5/16"	27,0	31,5	25,0	29,0	60,5	12,1	9,8	2,8	50
5047TR12516	1/2"	5/16"	28,0	33,0	25,0	29,0	62,0	13,8	9,8	4,1	50
5047TR1238	1/2"	3/8"	28,0	33,0	27,0	31,5	64,5	13,8	12,1	4,6	50
5047TR5812	5/8"	1/2"	30,0	36,0	28,0	33,0	69,0	17,5	13,8	7,5	25
5047TR3458	3/4"	5/8"	31,0	37,0	30,0	37,0	74,0	21,0	17,5	10,0	25



portagomma intermedio a T tubo in pollici • union tee inch size barb connector

5052



CODE	ØD I.D.	C1	L1	C2	L2	ØB Cresta barb	Peso (g) weight	
5052TR316	3/16"	21,0	25,0	21,0	27,5	6,3	1,2	50
5052TR14	1/4"	23,0	27,5	23,0	29,0	8,0	1,9	50
5052TR516	5/16"	25,0	30,5	25,0	32,5	9,8	3,2	50
5052TR38	3/8"	26,5	33,0	27,0	35,5	12,0	5,5	50
5052TR12	1/2"	28,0	34,0	28,0	37,5	13,8	9,0	50
5052TR58	5/8"	30,0	44,0	30,0	44,0	17,5	14,0	25
5052TR34	3/4"	31,0	45,0	31,0	45,0	21,0	17,0	25

