

RACCORDI A CALZAMENTO IN OTTONE • *brass push-on fittings*

LEGENDA CODICE • *Model designation*

2500TR

 ↓
Codice
code

18

 ↓
Filetto
thread size

53

 ↓
Diametro Tubo
tube diameter

Metrico <i>metric thread</i>	
M5	M5
M6	M6
M12125	M12x1,25
M1215	M12x1,5
Conico BSPT <i>BSPT thread</i>	
18	R1/8"
14	R1/4"
38	R3/8"
12	R1/2"
Cilindrico BSPP <i>BSPP thread</i>	
18	G1/8"
14	G1/4"
38	G3/8"
12	G1/2"

Code	O.D.	I.D.
4	4mm	2,7mm
5	5mm	3mm
6	6mm	4mm
8	8mm	6mm
10	10mm	8mm
12	12mm	10mm
15	15mm	12,5mm



DATI TECNICI

Applicazioni	Circuiti Pneumatici, Oleodinamici ed Idraulici
Materiali utilizzati	Ottone UNI EN 12164 CW 614N. Ottone UNI EN 12165 CW 617N O'Ring: NBR
Filettature	Gas Conica BSPT ISO 7 Gas Cilindrica BSPP ISO 228 da 1/8" a 1/2" Metrica ISO R/262
Pressione d'esercizio	18 BAR
Temperatura d'esercizio	-20°C +90°C -10°C +80°C (per i raccordi con OR e girevoli) la pressione massima di esercizio e la temperatura sono determinate dalle caratteristiche del tubo impiegato. Contattare l'Ufficio Tecnico Tierre Group per maggiori informazioni
Tubi da utilizzare	Poliuretano (PU) Polietilene (PE) Poliammide (PA) PTFE calibrato FEP calibrato

Technical specifications

<i>applications</i>	<i>pneumatic and hydraulic systems</i>
<i>materials used</i>	<i>brass UNI EN 12164 CW 614N brass UNI EN 12165 CW 617N O'Ring: NBR</i>
<i>threads</i>	<i>taper gas BSPT ISO 7 cylindrical gas BSPP ISO 228 from 1/8" to 1/2" metric ISO R/262</i>
<i>working pressure</i>	<i>18 BAR</i>
<i>working temperature</i>	<i>-20°C +90°C -10°C +80°C (for swivel fittings & fittings with OR) the working pressure & working temperature depend on the features of the selected tube Ask to Tierre Group Technical Department for more information</i>
<i>tubes used</i>	<i>polyurethane (PU) polyethylene (PE) polyamide (PA) calibrated PTFE calibrated FEP</i>

 Prodotti conformi alla direttiva 2002/95/EC **RoHS**

 products in conformity with the directive 2002/95/EC **RoHS**

Disponibile su richiesta la nichelatura alimentare NSF con suffisso -HF
available on demand NSF nickel plating coating with -HF into the code

 I dati tecnici e le quote non sono vincolanti • *drawings and technical data are not binding*

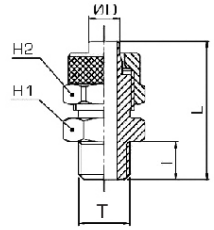
RACCORDI A CALZAMENTO IN OTTONE • *brass push-on fittings*

diritto maschio cilindrico BSPP • *male connector BSPP thread*

2500



CODE	T	Ø D O.D./I.D.	I	L	H1(Hex)	H2(Hex)	Peso Weight(g)	
2500TR1853	G1/8"	5/3	6	23,0	14	8	10,0	100
2500TR1864	G1/8"		6	25,5	14	12	16,0	100
2500TR1464	G1/4"	6/4	8	28,0	17	12	24,0	100
2500TR3864	G3/8"		9	29,0	19	12	28,0	50
2500TR1886	G1/8"		6	25,5	14	14	18,0	100
2500TR1486	G1/4"	8/6	8	28,0	17	14	26,0	50
2500TR3886	G3/8"		9	29,0	19	14	28,0	50
2500TR18108	G1/8"		6	27,0	14	16	24,0	50
2500TR14108	G1/4"	10/8	8	29,5	17	16	30,0	50
2500TR38108	G3/8"		9	30,5	19	16	34,0	50
2500TR12108	G1/2"		10	32,0	24	16	44,0	50
2500TR381210	G3/8"	12/10	9	32,0	19	18	38,0	50
2500TR121210	G1/2"		10	33,5	24	18	48,0	50
2500TR1215125	G1/2"	15/12,5	10	35,5	24	22	60,0	25



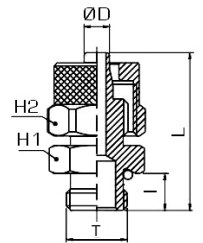
diritto maschio cilindrico BSPP con OR • *male connector BSPP thread with OR*

2502



NEW

CODE	T	Ø D O.D./I.D.	I	L	H1(Hex)	H2(Hex)	Peso Weight(g)	
2502TR18427	G1/8"	4/2,7	6	21,8	13	8	10,0	100
2502TR1853	G1/8"	5/3	6	23,0	15	8	11,0	100
2502TR1864	G1/8"		6	25,5	13	12	16,0	100
2502TR1464	G1/4"	6/4	8	28,0	16	12	21,0	100
2502TR3864	G3/8"		9	29,0	19	12	26,0	50
2502TR1264	G1/2"		10	30,5	24	12	45,0	50
2502TR1886	G1/8"		6	25,5	14	14	18,0	100
2502TR1486	G1/4"	8/6	8	28,0	16	14	22,0	50
2502TR3886	G3/8"		9	29,0	19	14	31,0	50
2502TR1286	G1/2"		10	30,5	24	14	38,0	50
2502TR18108	G1/8"		6	27,5	14	16	24,0	50
2502TR14108	G1/4"	10/8	8	29,5	16	16	28,0	50
2502TR38108	G3/8"		9	30,5	19	16	32,0	50
2502TR12108	G1/2"		10	32,0	24	16	51,0	50
2502TR381210	G3/8"	12/10	9	32,0	19	18	36,0	50
2502TR121210	G1/2"		10	33,5	24	18	46,0	50
2502TR1215125	G1/2"	15/12,5	10	35,5	24	22	52,0	25

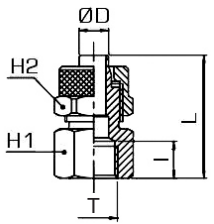


diritto femmina cilindrico BSPP • *female connector BSPP thread*

2505



CODE	T	Ø D O.D./I.D.	I	L	H1(Hex)	H2(Hex)	Peso Weight(g)	
2505TR18427 new	G1/8"	4/2,7	8,0	21,3	14	8	11,0	100
2505TR1853 new	G1/8"	5/3	8,0	22,5	14	8	12,0	100
2505TR1864	G1/8"		8,0	25,0	14	12	18,0	100
2505TR1464	G1/4"	6/4	11,0	29,0	17	12	26,0	100
2505TR3864	G3/8"		11,5	29,5	20	12	30,0	50
2505TR1886	G1/8"		8,0	25,0	14	14	20,0	100
2505TR1486	G1/4"	8/6	11,0	29,0	17	14	28,0	50
2505TR3886	G3/8"		11,5	29,5	20	14	32,0	50
2505TR18108	G1/8"		8,0	26,5	14	16	24,0	100
2505TR14108	G1/4"	10/8	11,0	30,5	17	16	32,0	50
2505TR38108	G3/8"		11,5	31,0	20	16	36,0	50
2505TR12108	G1/2"		14,0	34,5	24	16	50,0	50
2505TR381210	G3/8"	12/10	11,5	32,5	20	18	40,0	25

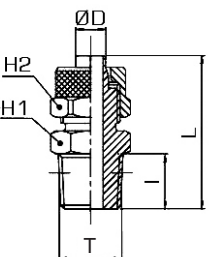


diritto maschio conico BSPT • *male connector BSPT thread*

2510



CODE	T	Ø D O.D./I.D.	I	L	H1(Hex)	H2(Hex)	Peso Weight(g)	
2510TR18427 new	R1/8"	4/2,7	8	23,8	12	8	10,0	100
2510TR1853	R1/8"	5/3	8,0	25,0	12	8	10,0	100
2510TR1864	R1/8"		8,0	27,5	12	12	16,0	100
2510TR1464	R1/4"	6/4	11,0	31,0	14	12	20,0	100
2510TR3864	R3/8"		11,5	31,5	17	12	26,0	50
2510TR1886	R1/8"		8,0	27,5	12	14	18,0	100
2510TR1486	R1/4"	8/6	11,0	31,0	14	14	22,0	50
2510TR3886	R3/8"		11,5	31,5	17	14	28,0	50
2510TR1286 new	R1/2"		14,0	34,5	22	14	44,0	50
2510TR18108	R1/8"		8,0	29,5	14	16	24,0	50
2510TR14108	R1/4"	10/8	11,0	32,5	14	16	28,0	50
2510TR38108	R3/8"		11,5	33,0	17	16	34,0	50
2510TR12108	R1/2"		14,0	36,0	22	16	46,0	50
2510TR381210	R3/8"	12/10	11,5	34,5	17	18	38,0	50
2510TR121210	R1/2"		14,0	37,5	22	18	50,0	50
2510TR1215125	R1/2"	15/12,5	14,0	39,5	22	22	62,0	25



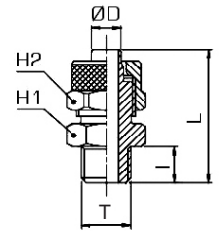
RACCORDI A CALZAMENTO IN OTTONE • brass push-on fittings

diritto maschio metrico • male connector metric thread

2512



CODE	T	Ø D O.D./I.D.	I	L	H1(Hex)	H2(Hex)	Peso Weight(g)	
2512TRM5427	M5	4/2,7	4	20	9	8	6,0	100
2512TRM553	M5		4	20	8	8	4,0	100
2512TRM653	M6	5/3	5	21	8	8	6,0	100
2512TRM564	M5		4	21	8	9	6,0	100
2512TRM664	M6	6/4	5	22	8	9	6,0	100
2512TRM1212564	M12X1,25		8	28	17	12	22,0	50
2512TRM121564	M12X1,5		8	28	17	12	22,0	50
2512TRM1212586	M12X1,25	8/6	8	28	17	14	24,0	50
2512TRM121586	M12X1,5		8	28	17	14	24,0	50

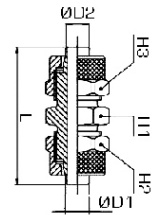


diritto intermedio • union connector

2515



CODE	Ø D1 O.D./I.D.	Ø D2 O.D./I.D.	L	H1(Hex)	H2(Hex)	H3(Hex)	Peso Weight(g)	
2515TR427 new	4/2,7	4/2,7	26,0	8	8	8	8,0	100
2515TR53	5/3	5/3	28,5	8	8	8	8,0	100
2515TR64	6/4	6/4	34,5	12	12	12	22,0	100
2515TR86	8/6	8/6	35,0	14	14	14	28,0	50
2515TR8664	8/6	6/4	35,0	14	14	12	26,0	50
2515TR108	10/8	10/8	38,0	14	16	16	36,0	50
2515TR1210	12/10	12/10	41,0	17	18	18	48,0	25
2515TR15125	15/12,5	15/12,5	45,5	22	22	22	78,0	25

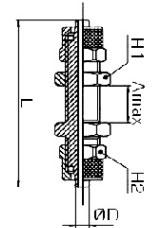


passaparete • bulkhead connector

2520



CODE	Ø D O.D./I.D.	L	A max	H1(Hex)	H2(Hex)	Peso Weight(g)	
2520TR427 new	4/2,7	36,7	8,5	9	8	10,0	100
2520TR53	5/3	40,0	8,5	9	8	12,0	100
2520TR64	6/4	48,0	10,5	14	12	34,0	100
2520TR86	8/6	48,0	10,5	16	14	42,0	50
2520TR108	10/8	50,0	8,5	17	16	54,0	50
2520TR1210	12/10	53,0	8,5	19	18	76,0	50
2520TR15125	15/12,5	58,0	8,5	24	22	110,0	25

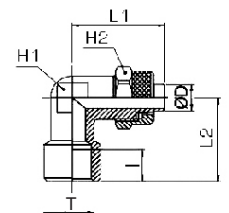


gomito femmina cilindrico BSPP • female elbow BSPP thread

2530



CODE	T	Ø D O.D./I.D.	I	L1	L2	H1(Hex)	H2(Hex)	Peso Weight(g)	
2530TR1853	G1/8"	5/3	8,0	21,5	19,0	10	8	16,0	100
2530TR1864	G1/8"		8,0	22,5	19,0	10	12	22,0	100
2530TR1464	G1/4"	6/4	10,5	25,0	23,0	11	12	36,0	50
2530TR1886	G1/8"		8,0	22,5	19,0	10	14	22,0	50
2530TR1486	G1/4"	8/6	10,5	25,0	23,0	11	14	32,0	50
2530TR14108	G1/4"	10/8	11,0	26,0	23,5	13	16	38,0	50
2530TR381210	G3/8"	12/10	11,5	30,5	28,0	17	18	60,0	25

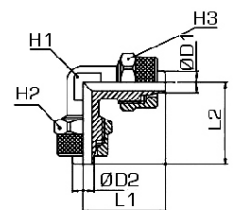


gomito intermedio • union elbow

2535



CODE	Ø D1 O.D./I.D.	Ø D2 O.D./I.D.	L1	L2	H1(Hex)	H2(Hex)	H3(Hex)	Peso Weight(g)	
2535TR427 new	4/2,7	4/2,7	20,3	20,3	8	8	8	11,0	100
2535TR53	5/3	5/3	21,5	21,5	8	8	8	12,0	100
2535TR64	6/4	6/4	21,5	21,5	8	12	12	20,0	100
2535TR86	8/6	8/6	22,5	22,5	10	14	14	28,0	50
2535TR8664	8/6	6/4	22,5	22,5	10	14	12	26,0	50
2535TR108	10/8	10/8	25,5	25,5	11	16	16	38,0	25
2535TR1210	12/10	12/10	30,0	30,0	14	18	18	56,0	25
2535TR15125	15/12,5	15/12,5	34,0	34,0	17	22	22	88,0	25



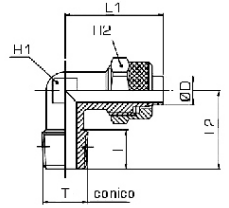
RACCORDI A CALZAMENTO IN OTTONE • brass push-on fittings

gomito maschio conico BSPT • male elbow BSPT thread

2540



CODE	T	Ø D O.D./I.D.	I	L1	L2	H1(Hex)	H2(Hex)	Peso Weight(g)	
2540TR18427 new	R1/8"	4/2,7	8	19,5	17,0	8	8	10,0	100
2540TR1853	R1/8"	5/3	8,0	21,5	17,0	8	8	10,0	100
2540TR1864	R1/8"		8,0	22,5	17,0	8	12	16,0	100
2540TR1464	R1/4"	6/4	11,0	22,5	20,0	10	12	22,0	100
2540TR3864	R3/8"		11,5	23,5	22,5	11	12	30,0	50
2540TR1886	R1/8"		8,0	22,5	17,0	10	14	20,0	100
2540TR1486	R1/4"	8/6	11,0	22,5	20,0	10	14	24,0	100
2540TR3886	R3/8"		11,5	24,0	22,5	11	14	32,0	50
2540TR18108	R1/8"		8,0	25,5	18,5	11	16	28,0	50
2540TR14108	R1/4"		11,0	25,5	21,5	11	16	32,0	50
2540TR38108	R3/8"	10/8	11,5	25,5	22,5	11	16	34,0	50
2540TR12108	R1/2"		14,0	28,0	28,0	17	16	56,0	25
2540TR141210	R1/4"		11,0	30,0	24,0	14	18	42,0	50
2540TR381210	R3/8"	12/10	11,5	30,0	24,0	14	18	48,0	25
2540TR121210	R1/2"		14,0	30,5	28,0	17	18	60,0	25
2540TR1215125	R1/2"	15/12,5	14,0	34,0	28,0	17	22	70,0	25

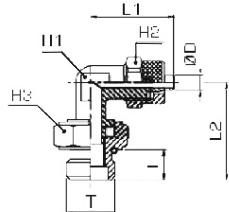


gomito girevole maschio cilindrico BSPP • swivel male elbow BSPP thread

2542



CODE	T	Ø D O.D./I.D.	I	L1	L2	H1(Hex)	H2(Hex)	H3(Hex)	Peso Weight(g)	
2542TR18427 new	G1/8"	4/2,7	6	21,5	22,5	8	12	14	18,0	100
2542TR1864	G1/8"		6	22,5	22,5	8	12	14	22,0	100
2542TR1464	G1/4"	6/4	8	23,5	25,0	10	12	17	34,0	50
2542TR1886	G1/8"		6	23,5	22,5	10	14	14	28,0	50
2542TR1486	G1/4"	8/6	8	23,5	25,0	10	14	17	36,0	50
2542TR14108	G1/4"	10/8	8	23,5	25,5	11	14	17	42,0	25



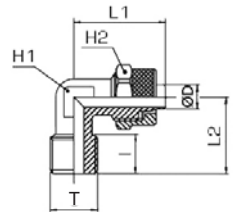
Articolo disponibile anche con OR • item available also with OR

gomito maschio metrico • male elbow metric thread

2548



CODE	T	Ø D O.D./I.D.	I	L1	L2	H1(Hex)	H2(Hex)	Peso Weight(g)	
2548TRM5427 new	M5		4	19,5	15	8	8	10,0	100
2548TRM6427 new	M6	4/2,7	4	19,5	15	8	8	10,0	100
2548TRM553	M5	5/3	4	21,5	15	8	8	10,0	50
2548TRM564	M5		4	22,5	15	8	9	14,0	50
2548TRM1212564	M12X1,25	6/4	9	22,5	21	10	12	24,0	50
2548TRM121564	M12X1,5		9	22,5	21	10	12	22,0	50
2548TRM1212586	M12X1,25	8/6	9	22,5	21	10	14	24,0	25
2548TRM121586	M12X1,5		9	22,5	21	10	14	24,0	25

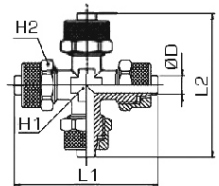


giunzione a croce • cross junction

2550



CODE	Ø D O.D./I.D.	L1	L2	H1(Hex)	H2(Hex)	Peso Weight(g)	
2550TR53	5/3	43	43	8	8	22,0	100
2550TR64	6/4	45	45	8	12	42,0	50
2550TR86	8/6	45	45	10	14	52,0	50
2550TR108	10/8	51	51	11	16	70,0	50



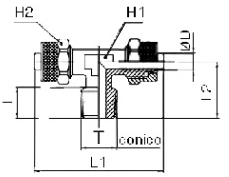
RACCORDI A CALZAMENTO IN OTTONE • brass push-on fittings

T maschio conico BSPT • male tee adapter BSPT thread

2555



CODE	T	Ø D O.D./I.D.	I	L1	L2	H1(Hex)	H2(Hex)	Peso Weight(g)	
2555TR18427 new	R1/8"	4/2,7	8,0	40,5	17,0	8	8	16,0	100
2555TRM553 new	M5		4,0	43,0	15,0	8	8	16,0	100
2555TR1853	R1/8"	5/3	8,0	43,0	17,0	8	8	16,0	100
2555TR1864	R1/8"		8,0	45,0	17,0	8	12	26,0	100
2555TR1464	R1/4"	6/4	11,0	45,5	20,5	10	12	34,0	50
2555TR3864 new	R3/8"		11,5	47,0	22,5	11	12	42,0	50
2555TR1886	R1/8"		8,0	45,5	17,5	10	14	34,0	50
2555TR1486	R1/4"	8/6	11,0	45,5	20,5	10	14	36,0	50
2555TR3886 new	R3/8"		11,5	48,0	22,5	11	14	44,0	50
2555TR18108	R1/8"		8,0	51,0	18,5	11	16	44,0	50
2555TR14108	R1/4"	10/8	11,0	51,0	21,5	11	16	48,0	50
2555TR38108	R3/8"		11,5	51,0	22,5	11	16	50,0	50
2555TR12108	R1/2"		14,0	57,0	28,0	17	16	80,0	25
2555TR381210	R3/8"	12/10	11,5	60,0	24,5	14	18	70,0	25
2555TR121210	R1/2"		14,0	61,0	28,0	17	18	86,0	25
2555TR1215125	R1/2"	15/12,5	14,0	68,0	28,0	17	22	108,0	25

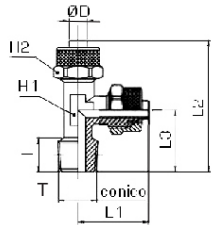


T laterale maschio conico BSPT • lateral male tee BSPT thread

2560



CODE	T	Ø D O.D./I.D.	I	L1	L2	L3	H1(Hex)	H2(Hex)	Peso Weight(g)	
2560TR18427 new	R1/8"	4/2,7	8,0	21,5	38,0	17,0	8	8	16,0	100
2560TRM553 new	M5		4,0	21,5	36,5	15,0	8	8	16,0	100
2560TR1853	R1/8"	5/3	8,0	21,5	38,5	17,0	8	8	16,0	100
2560TR1864	R1/8"		8,0	22,5	39,5	17,0	8	12	26,0	100
2560TR1464	R1/4"	6/4	11,0	22,5	42,5	20,0	10	12	34,0	50
2560TR3864 new	R3/8"		11,5	24,0	46,5	22,5	11	12	40,0	50
2560TR1886	R1/8"		8,0	22,5	40,5	17,5	10	14	34,0	50
2560TR1486	R1/4"	8/6	11,0	22,5	43,5	20,5	10	14	38,0	50
2560TR3886 new	R3/8"		11,5	23,5	46,5	22,5	11	14	44,0	50
2560TR18108	R1/8"		8,0	25,5	44,0	18,5	11	16	44,0	50
2560TR14108	R1/4"	10/8	11,0	25,5	46,5	21,0	11	16	48,0	50
2560TR38108	R3/8"		11,5	25,5	48,0	22,5	11	16	50,0	50
2560TR12108	R1/2"		14,0	29,0	57,0	28,0	17	16	76,0	25
2560TR381210	R3/8"	12/10	11,5	30,0	54,5	24,5	14	18	70,0	25
2560TR121210	R1/2"		14,0	30,5	58,5	28,0	17	18	86,0	25
2560TR1215125	R1/2"	15/12,5	14,0	34,0	62,0	28,0	17	22	108,0	25

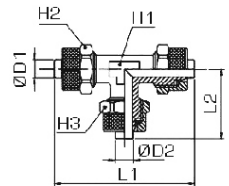


T intermedio • union tee

2565



CODE	Ø D1 O.D./I.D.	Ø D2 O.D./I.D.	L1	L2	H1(Hex)	H2(Hex)	H3(Hex)	Peso Weight(g)	
2565TR427 new	4/2,7	4/2,7	40,6	20,3	8	8	8	16,0	100
2565TR53	5/3	5/3	43,0	21,5	8	8	8	16,0	100
2565TR64	6/4	6/4	45,0	22,5	8	12	12	32,0	50
2565TR86	8/6	8/6	45,0	22,5	10	14	14	42,0	50
2565TR8664	8/6	6/4	45,0	22,5	10	14	12	40,0	50
2565TR108	10/8	10/8	51,0	25,5	11	16	16	56,0	25
2565TR1210	12/10	12/10	60,0	30,0	14	18	18	78,0	25
2565TR15125	15/12,5	15/12,5	68,0	34,0	17	22	22	124,0	25

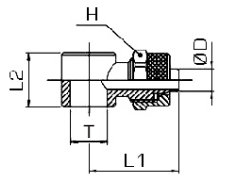


orientabile singolo • single banjo body

2570



CODE	T	Ø D O.D./I.D.	L1	L2	H(Hex)	Peso Weight(g)	
2570TRM5427 new	M5		15,8	9,0	8	6,0	100
2570TRM6427 new	M6	4/2,7	15,8	9,0	8	6,0	100
2570TR18427 new	G1/8"		21,3	14,5	8	15,0	100
2570TRM553 new	M5		17,0	9,0	8	8,0	100
2570TR1853 new	G1/8"	5/3	22,5	14,5	8	14,0	100
2570TRM564 new	M5		18,0	9,0	9	8,0	100
2570TR1864	G1/8"	6/4	24,0	14,5	12	20,0	100
2570TR1464	G1/4"		26,0	14,5	12	24,0	100
2570TR1886	G1/8"	8/6	24,0	14,5	14	22,0	100
2570TR1486	G1/4"		26,0	14,5	14	26,0	50
2570TR14108 new	G1/4"	10/8	27,5	14,5	16	30,0	50

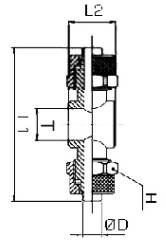


orientabile doppio • double banjo body

2575



CODE	T	Ø D O.D./I.D.	L1	L2	H(Hex)	Peso Weight(g)	
2575TR18427 new	G1/8"	4/2,7	42,6	14,5	8	19,0	100
2575TR1853 new	G1/8"	5/3	45,0	14,5	8	20,0	100
2575TR1864	G1/8"	6/4	48,0	14,5	12	30,0	100
2575TR1464 new	G1/4"		52,0	14,5	12	34,0	100
2575TR1886 new	G1/8"	8/6	48,0	14,5	14	32,0	100
2575TR1486 new	G1/4"		52,0	14,5	14	38,0	100
2575TR14108 new	G1/4"	10/8	55,0	14,5	16	44,0	50

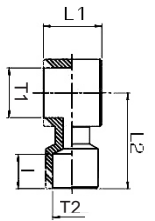


orientabile singolo femmina • female single banjo body

2580



CODE	T1	T2	I	L1	L2	Peso Weight(g)	
2580TR18	G1/8"	G1/8"	8,0	14,5	20,0	22,0	100
2580TR14	G1/4"	G1/4"	10,0	17,5	24,5	41,0	100
2580TR38	G3/8"	G3/8"	11,5	21,0	29,0	78,0	50



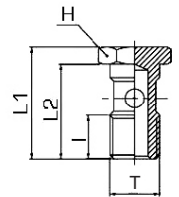
NEW

asta singola • single banjo stem

251V



CODE	T	I	L1	L2	H(Hex)	Peso Weight(g)	
251VM5	M5	6	18,0	14,5	8	4,0	50
251VM6 new	M6	6	18,0	14,5	8	5,0	50
251V18	G1/8"	8	27,0	23,0	14	14,0	50
251V14	G1/4"	11	29,5	25,0	17	24,0	50

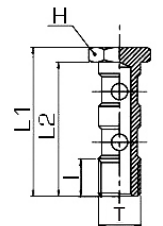


asta doppia • double banjo stem

252V



CODE	T	I	L1	L2	H(Hex)	Peso Weight(g)	
252V18	G1/8"	8	43,0	39,0	14	18,0	50
252V14	G1/4"	11	45,5	41,0	17	34,0	50

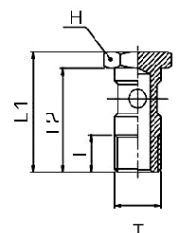


astina singola lunga • long single banjo stem

2585



CODE	T	I	L1	L2	H(Hex)	Peso Weight(g)	
2585TR18	G1/8"	8	31,0	27,0	14,0	16,0	100
2585TR14	G1/4"	11	33,5	29,0	17,0	26,0	100



NEW

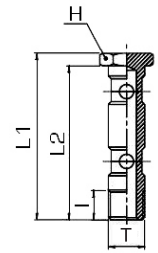
asta doppia lunga • *long double banjo stem*

2595



NEW

CODE	T	I	L1	L2	H(Hex)	Peso Weight(g)	
2595TR18	G1/8"	8	56,0	52,0	14	24,0	100
2595TR14	G1/4"	11	58,5	54,0	17	42,0	100

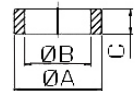


distanziale nylon • *nylon spacer*

2625



CODE	-	A	B	C	Peso Weight(g)	
2625TR18	1/8"	14,0	10,0	5,0	52,0	100
2625TR14	1/4"	17,5	13,2	5,0	66,0	100



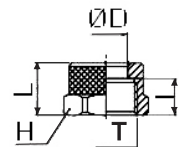
Questo distanziale viene utilizzato sulle aste 2585 e 2595 - *this spacer is used on stems 2585 & 2595*

dado di bloccaggio • *locking nut*

2630



CODE	T	Ø D O.D./I.D.	I	L	H(Hex)	Peso Weight(g)	
2630TRM605427 new	M6X0,5	4/2,7	6,0	8,1	8	1,50	100
2630TRM707553	M7X0,75	5/3	6,0	8,5	8	1,34	100
2630TRM807564	M8X0,75	6/4	6,5	9,0	9	1,51	100
2630TRM10164	M10X1	6/4	7,5	10,5	12	4,64	100
2630TRM12186	M12X1	8/6	7,5	10,5	14	5,57	100
2630TRM141108	M14X1	10/8	8,0	11,5	16	7,09	100
2630TRM1611210	M16X1	12/10	10,0	13,0	18	9,36	100
2630TRM20115125	M20X1	15/12,5	11,0	15,5	22	15,04	100



2610



rondella nylon dentellata
nylon notched washer
Pag. 223

2615



rondella nylon
nylon washer
Pag. 223

2620



rondella alluminio
aluminium washer
Pag. 223

