

NEW



INNESTI RAPIDI IN TECNOPOLIMERO PER ALTE PRESTAZIONI

plastic push-in fittings for high performance

LEGENDA CODICE • model designation

Filetto Conico BSPT • BSPT thread

HPC	06	R01																						
↓ Codice code	↓ Diametro Tubo tube diameter	↓ Filetto thread size																						
	<table border="1"> <thead> <tr> <th>Codice code</th> <th>Misura size</th> </tr> </thead> <tbody> <tr><td>04</td><td>4mm</td></tr> <tr><td>06</td><td>6mm</td></tr> <tr><td>08</td><td>8mm</td></tr> <tr><td>10</td><td>10mm</td></tr> <tr><td>12</td><td>12mm</td></tr> </tbody> </table>	Codice code	Misura size	04	4mm	06	6mm	08	8mm	10	10mm	12	12mm	<table border="1"> <thead> <tr> <th colspan="2">Conico BSPT BSPT thread</th> </tr> </thead> <tbody> <tr><td>R01</td><td>R1/8"</td></tr> <tr><td>R02</td><td>R1/4"</td></tr> <tr><td>R03</td><td>R3/8"</td></tr> <tr><td>R04</td><td>R1/2"</td></tr> </tbody> </table>	Conico BSPT BSPT thread		R01	R1/8"	R02	R1/4"	R03	R3/8"	R04	R1/2"
Codice code	Misura size																							
04	4mm																							
06	6mm																							
08	8mm																							
10	10mm																							
12	12mm																							
Conico BSPT BSPT thread																								
R01	R1/8"																							
R02	R1/4"																							
R03	R3/8"																							
R04	R1/2"																							

Filetto Cilindrico BSPP • BSPP thread

HPC	06	G01																						
↓ Codice code	↓ Diametro Tubo tube diameter	↓ Filetto thread size																						
	<table border="1"> <thead> <tr> <th>Codice code</th> <th>Misura size</th> </tr> </thead> <tbody> <tr><td>04</td><td>4mm</td></tr> <tr><td>06</td><td>6mm</td></tr> <tr><td>08</td><td>8mm</td></tr> <tr><td>10</td><td>10mm</td></tr> <tr><td>12</td><td>12mm</td></tr> </tbody> </table>	Codice code	Misura size	04	4mm	06	6mm	08	8mm	10	10mm	12	12mm	<table border="1"> <thead> <tr> <th colspan="2">Cilindrico BSPP BSPP thread</th> </tr> </thead> <tbody> <tr><td>G01</td><td>G1/8"</td></tr> <tr><td>G02</td><td>G1/4"</td></tr> <tr><td>G03</td><td>G3/8"</td></tr> <tr><td>G04</td><td>G1/2"</td></tr> </tbody> </table>	Cilindrico BSPP BSPP thread		G01	G1/8"	G02	G1/4"	G03	G3/8"	G04	G1/2"
Codice code	Misura size																							
04	4mm																							
06	6mm																							
08	8mm																							
10	10mm																							
12	12mm																							
Cilindrico BSPP BSPP thread																								
G01	G1/8"																							
G02	G1/4"																							
G03	G3/8"																							
G04	G1/2"																							

DATI TECNICI

Fluidi compatibili	Acqua potabile, bevande, aria compressa, vuoto, gas & liquidi compatibili con i materiali costruttivi
Materiali costruttivi	Corpo: POM Colletto: POM + SUS301 Guarnizioni: EPDM idoneo al contatto con alimenti
Filettature	Gas Conica BSPT ISO 7 da R1/8" a R1/2" Gas Cilindrica BSPP ISO 228 da G1/8" a G1/2"
Coppie di serraggio	1/8" & 1/4": 1,5 N/m - 3/8" & 1/2": 3,0 N/m
Pressione d'esercizio	da -750mmHg a 20 Bar
Temperatura d'esercizio	fino a 98°C

°C / mm	4	6	8	10	12
1° C *	20 Bar	20 Bar	20 Bar	16 Bar	14 Bar
25° C *	20 Bar	20 Bar	20 Bar	16 Bar	14 Bar
70° C *	16 Bar	16 Bar	16 Bar	14 Bar	12 Bar
98° C	10 Bar	10 Bar	10 Bar	8 Bar	6 Bar

Tubi utilizzabili	<p>Tubi plastici:</p> <p>Poliammide (PA) - Polietilene (PE) - PUES - PUET PTFE - FEP (tolleranza ±0,1mm)</p> <p>Tubi in metalli leggeri:</p> <p>Ottone, rame e acciaio dolce</p> <p>Tubi in metalli duri:</p> <p>Contattare l'ufficio tecnico per l'utilizzo con tubi in acciaio inox e altri metalli duri</p>
--------------------------	--

Technical specifications

fluid types	water, beverages, compressed air, vacuum, selected gases & liquids suitable with construction materials
construction materials	body: POM collet: POM + SUS 301 seals: EPDM suitable for food contact
threads	taper gas BSPT ISO 7 from R1/8" to R1/2" parallel gas BSPP ISO 228 from G1/8" to G1/2"
max torque	1/8" & 1/4": 1,5 N/m - 3/8" & 1/2": 3,0 N/m
working pressure	from -750mmHg to 20 Bar
working temperature	up to 98°C

°C / mm	4	6	8	10	12
1° C *	20 Bar	20 Bar	20 Bar	16 Bar	14 Bar
25° C *	20 Bar	20 Bar	20 Bar	16 Bar	14 Bar
70° C *	16 Bar	16 Bar	16 Bar	14 Bar	12 Bar
98° C	10 Bar	10 Bar	10 Bar	8 Bar	6 Bar

applicable tubes	<p>Plastic tubes:</p> <p>polyamide (PA) - polyethylene (PE) PUES - PUET - PTFE - FEP (tolerance ±0,1mm)</p> <p>Soft metal tubes:</p> <p>Brass, copper and mild steel</p> <p>Hard metal tubes:</p> <p>please contact our technical department for stainless steel and other hard materials tubes use</p>
-------------------------	---

Prodotti conformi alla direttiva 2002/95/EC **RoHS**

Prodotti conformi alla direttiva 1907/2006

products in compliance with the directive 2002/95/EC **RoHS**

products in compliance with the directive 1907/2006

I dati tecnici e le quote non sono vincolanti • drawings and technical data are not binding

INNESTI RAPIDI IN TECNOPOLIMERO PER ALTE PRESTAZIONI
plastic push-in fittings for high performance



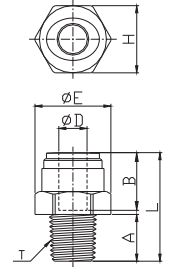
diritto maschio conico BSPT • *male connector BSPT thread*

HPC



NEW

CODE	ØD	T	A	B	ØE	L	H(Hex)	Peso Weight(g)	
HPC 06R01W	6	R1/8"	9,1	16,1	18,5	26,2	17	4,0	100
HPC 06R02W		R1/4"	13,1	16,1	18,5	26,7	17	4,2	100
HPC 08R01W	8	R1/8"	9,1	17,5	21,0	28,1	19	5,3	100
HPC 08R02W		R1/4"	13,1	17,5	21,0	30,6	19	5,8	50
HPC 10R03W	10	R3/8"	13,5	20,1	23,2	28,8	21	6,7	50
HPC 10R04W		R1/2"	16,3	20,1	24,4	32,1	22	9,5	50
HPC 12R03W	12	R3/8"	13,5	24,7	26,5	32,2	24	8,8	50
HPC 12R04W		R1/2"	16,3	24,7	26,5	34,3	24	11,1	50

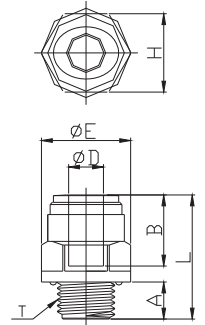


diritto maschio cilindrico BSPP con OR • *male connector BSPP thread with OR*



NEW

CODE	ØD	T	A	B	ØE	L	H(Hex)	Peso Weight(g)	
HPC 04G01W	4	G1/8"	6,0	14,7	16,6	21,9	15	3,3	100
HPC 04G02W		G1/4"	8,5	14,7	20,5	23,9	18	4,8	100
HPC 06G01W	6	G1/8"	6,0	16,1	16,6	24,1	15	3,3	100
HPC 06G02W		G1/4"	8,5	16,1	20,5	24,1	18	4,8	100
HPC 08G01W	8	G1/8"	6,0	17,5	18,5	27,0	17	5,2	100
HPC 08G02W		G1/4"	8,5	17,5	20,5	28,5	18	6,1	50
HPC 08G03W	8	G3/8"	9,0	17,5	24,0	26,5	21	7,0	50
HPC 08G04W		G1/2"	12,5	17,5	28,5	29,5	26	11,9	50
HPC 10G02W	10	G1/4"	8,5	20,1	21,1	30,8	19	7,2	50
HPC 10G03W		G3/8"	9,0	20,1	24,2	26,3	21	7,0	50
HPC 10G04W	10	G1/2"	12,5	20,1	28,5	29,8	26	7,9	25
HPC 12G03W		G3/8"	9,0	24,7	27,0	34,2	24	11,6	25
HPC 12G04W	12	G1/2"	12,5	24,7	28,5	32,7	26	12,5	25



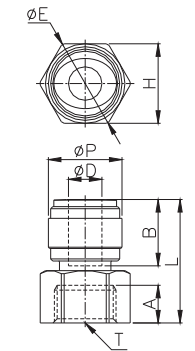
diritto femmina cilindrico BSPP con guarnizione piatta in EPDM • *female connector BSPP thread with EPDM flat seal*

HCF



NEW

CODE	ØD	T	ØP	A	B	ØE	L	H(Hex)	Peso Weight(g)	
HCF 06G01W	6	G1/8"	17,6	6,0	16,1	19,2	27,1	17	6,0	50
HCF 06G02W		G1/4"	17,6	8,5	16,1	21,5	29,1	19	7,0	50
HCF 08G01W	8	G1/8"	17,6	6,0	17,5	19,2	27,5	17	6,0	50
HCF 08G02W		G1/4"	17,6	8,5	17,5	21,5	29,5	19	7,0	50
HCF 08G03W	8	G3/8"	17,6	9,0	17,5	27,3	31,0	24	13,0	25
HCF 08G04W		G1/2"	20,0	12,5	17,5	30,0	38,0	27	14,0	25
HCF 10G03W	10	G3/8"	23,0	9,0	20,1	27,3	37,0	24	14,0	25
HCF 10G04W		G1/2"	20,0	12,5	20,1	30,0	38,3	27	13,0	25
HCF 12G03W	12	G3/8"	23,0	9,0	24,7	27,3	37,7	24	13,0	25
HCF 12G04W		G1/2"	23,0	12,5	24,7	30,0	41,7	27	14,0	25



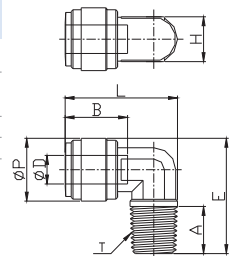
gomito maschio conico BSPT • *male elbow BSPT thread*

HPL



NEW

CODE	ØD	T	ØP	A	B	E	L	H(Hex)	Peso Weight(g)	
HPL 04R01W	4	R1/8"	13,2	9,1	14,7				3,0	100
HPL 06R01W	6	R1/8"	15,0	9,1	16,1	25,6	25,4	10	4,0	100
HPL 06R02W		R1/4"	15,0	13,1	16,1	30,6	27,0	10	5,1	50
HPL 08R02W	8	R1/4"	17,6	13,1	17,5	32,2	31,5	13	6,9	50
HPL 10R03W	10	R3/8"	20,0	13,5	20,1	35,7	33,9	14	9,2	50
HPL 12R04W	12	R1/2"	23,0	16,3	24,7	41,4	40,7	17	15,6	25



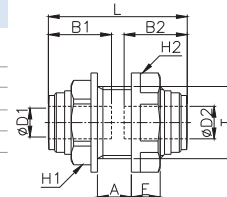
passaparete • bulkhead

HMM



NEW

CODE	ØD1	ØD2	T	A	E	B1	B2	H1 (Hex)	H2 (Hex)	L	Peso Weight(g)
HMM 0604W	6	4	M17x1,5P	7,9	7,0	16,1		19	21		12,0 50
HMM 0606W	6	6	M17x1,5P	7,9	7,0	16,1	16,1	19	21	34,2	12,0 50
HMM 0806W	8	6	M20x1,75P	9,4	8,0	17,5	16,1	21	25,5	38,1	14,0 50
HMM 0808W	8	8	M20x1,75P	9,4	8,0	17,5	17,5	21	25,5	38,5	14,0 50
HMM 1010W	10	10	M24x1,75P	10,8	8,5	20,1	20,1	24	28,5	42,2	17,0 25
HMM 1212W	12	12	M27x2,0P	16,4	9,0	24,7	24,7	27	31	51,4	20,0 25



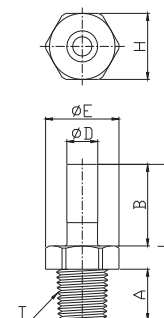
adattatore conico BSPT • stem adapter BSPT thread

HCJ



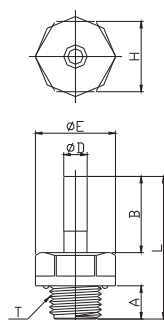
NEW

CODE	ØD	T	A	B	ØE	L	H(Hex)	Peso Weight(g)
HCJ 04R01W	4	R1/8"	9,1	18,0	14,4	33,1	13	2,6 100
HCJ 04R02W		R1/4"	13,1	18,0	18,5	37,1	17	4,2 100
HCJ 06R01W	6	R1/8"	9,1	19,5	14,4	34,6	13	2,8 100
HCJ 06R02W		R1/4"	13,1	19,5	18,5	38,6	17	4,3 100
HCJ 08R01W		R1/8"	9,1	21,0	14,4	36,1	13	3,0 100
HCJ 08R02W		R1/4"	13,1	21,0	18,5	40,1	17	4,6 50
HCJ 08R03W	8	R3/8"	13,5	21,0	23,0	40,5	21	6,2 50
HCJ 10R02W		R1/4"	13,1	24,0	18,5	43,1	17	5,3 50
HCJ 10R03W	10	R3/8"	13,5	24,0	23,0	44,0	21	6,8 50
HCJ 10R04W		R1/2"	16,5	24,0	26,5	47,0	24	10,6 25
HCJ 12R03W		R3/8"	13,5	28,0	23,0	48,0	21	7,3 50
HCJ 12R04W	12	R1/2"	16,5	28,0	26,5	51,0	24	11,0 25



adattatore cilindrico BSPP • stem adapter BSPP thread

CODE	ØD	T	A	B	ØE	L	H(Hex)	Peso Weight(g)
HCJ 04G01W	4	G1/8"	6,0	18,0	16,6	32,5	15	2,6 100
HCJ 04G02W		G1/4"	8,5	18,0	20,5	35,0	18	4,2 100
HCJ 06G01W	6	G1/8"	6,0	19,5	16,6	34,0	15	2,8 100
HCJ 06G02W		G1/4"	8,5	19,5	20,5	36,5	18	4,3 100
HCJ 08G01W		G1/8"	6,0	21,0	16,6	35,5	15	3,0 100
HCJ 08G02W	8	G1/4"	8,5	21,0	20,5	38,0	18	4,6 50
HCJ 08G03W		G3/8"	9,0	21,0	24,2	38,5	22	6,2 50
HCJ 10G02W		G1/4"	8,5	24,0	20,5	41,0	18	5,3 50
HCJ 10G03W	10	G3/8"	9,0	24,0	24,2	41,5	22	6,8 50
HCJ 10G04W		G1/2"	12,5	24,0	28,5	45,0	26	10,6 25
HCJ 12G03W		G3/8"	9,0	28,0	24,2	45,5	22	7,3 50
HCJ 12G04W	12	G1/2"	12,5	28,0	28,5	49,0	26	11,0 25



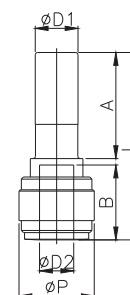
riduzione codolo tubo • reducer

HGJ



NEW

CODE	ØD1	ØD2	ØP	A	B	L	Peso Weight(g)
HGJ 0604W	6	4	10,5	21,0	14,7	36,7	2,4 100
HGJ 0806W	8	6	10,5	22,5	16,1	40,6	4,0 100
HGJ 1008W	10	8	12,5	24,8	17,5	43,8	6,3 50



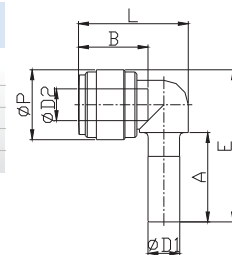
gomito codolo • elbow with stem

HLJ

CODE	ØD1	ØD2	ØP	A	B2	E	L	Peso Weight(g)	
HLJ 0404W	4	4	13,2	18,0	14,7	30,1	21,9	2,6	100
HLJ 0606W	6	6	15,5	21,0	16,1	34,8	25,1	3,8	100
HLJ 0808W	8	8	17,6	22,5	17,5	38,3	27,7	5,3	50
HLJ 1010W	10	10	20,0	24,8	20,1	43,2	31,3	7,4	50
HLJ 1212W	12	12	23,6	29,5	24,7	51,2	39,0	12,6	25



NEW



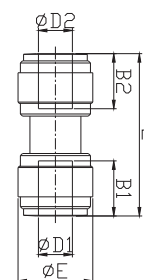
intermedio diritto • union connector

HUC

CODE	ØD1	ØD2	B1	B2	ØE	L	Peso Weight(g)	
HUC 0404W	4	4	14,7	14,7	13,2	31,8	3,8	100
HUC 0604W	6	4	16,1	14,7	15,0	35,0	6,5	100
HUC 0606W	6	6	16,1	16,1	15,0	35,2	4,8	100
HUC 0806W	8	6	17,5	16,1	17,6	37,8	8,0	50
HUC 0808W	8	8	17,5	17,5	17,6	38,2	6,9	50
HUC 1008W	10	8	20,1	17,5	20,0	42,4	12,0	50
HUC 1010W	10	10	20,1	20,1	20,0	42,7	9,0	50
HUC 1210W	12	10	24,7	20,1	23,0	51,7	16,5	25
HUC 1212W	12	12	24,7	24,7	23,0	52,4	14,2	25



NEW



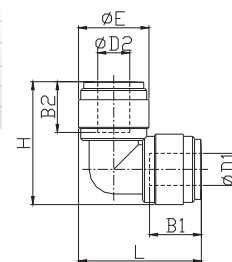
intermedio a gomito • union elbow

HUL

CODE	ØD1	ØD2	B1	B2	ØE	H	L	Peso Weight(g)	
HUL 0404W	4	4	14,7	14,7	13,2	24,5	24,5	3,9	100
HUL 0606W	6	6	16,1	16,1	15,0	27,6	27,6	5,0	100
HUL 0806W	8	6	17,5	16,1	17,6	30,3	30,7	8,0	50
HUL 0808W	8	8	17,5	17,5	17,6	30,7	30,7	7,6	50
HUL 1010W	10	10	20,1	20,1	20,0	35,8	35,8	10,1	50
HUL 1212W	12	12	24,7	24,7	23,0	43,2	43,2	16,4	25



NEW



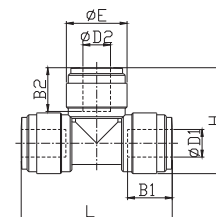
intermedio a T • union tee

HUT

CODE	ØD1	ØD2	B1	B2	ØE	H	L	Peso Weight(g)	
HUT 0404W	4	4	14,7	14,7	13,2	24,5	35,8	5,8	100
HUT 0606W	6	6	16,1	16,1	15,0	27,6	40,2	7,3	50
HUT 0808W	8	8	17,5	17,5	17,6	30,7	43,8	10,6	50
HUT 1010W	10	10	20,1	20,1	20,0	35,8	51,6	14,6	25
HUT 1212W	12	12	24,7	24,7	23,0	43,2	63,4	23,0	20



NEW



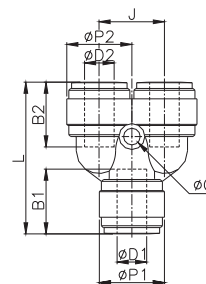
intermedio a Y • union Y

HUY



NEW

CODE	ØD1	ØD2	B1	B2	ØP1	ØP2	ØC	J	L	Peso Weight(g)	
HUY 0404W	4	4	14,7	14,7	14,7	14,7	13,2	24,5	35,8	6,0	100
HUY 0606W	6	6	16,1	16,1	16,1	16,1	15,0	27,6	40,2	8,0	50
HUY 0808W	8	8	17,5	17,5	17,5	17,5	17,6	30,7	43,8	11,0	50
HUY 1010W	10	10	20,1	20,1	20,1	20,1	20,0	35,8	51,6	15,0	25
HUY 1212W	12	12	24,7	24,7	24,7	24,7	23,0	43,2	63,4	24,0	20



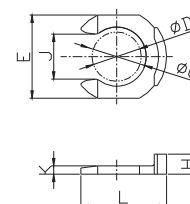
clip di bloccaggio • locking clip

HCP



NEW

CODE	ØD	ØC	E	L	H	J	K	Peso Weight(g)	
HCP 04B	4	6,2	10,2	11,0	2,8	4,3	1,1	0,2	100
HCP 06B	6	8,0	11,6	11,0	3,1	6,4	1,3	0,2	100
HCP 08B	8	9,6	13,5	13,9	3,3	7,3	1,4	0,2	100
HCP 10B	10	11,8	16,0	16,4	3,4	9,2	1,4	0,3	100
HCP 12B	12	14,4	19,0	19,0	3,6	11,1	1,4	0,5	100



valvola di non ritorno • check valve

HCVU



NEW

CODE	ØD	ØP	E	L	Peso Weight(g)	
HCVU 0606W	6	15,5	16,1	45,5	7,5	100
HCVU 0808W	8	17,6	17,5	48,6	10,0	50
HCVU 1010W	10	20,0	19,4	57,6	14,8	50
HCVU 1212W	12	23,6	23,9	67,5	22,3	25

