

VALVOLE A SFERA MINI INOX AISI 316

mini ball valves INOX AISI 316

VALVOLE A SFERA MINI INOX AISI 316 - mini ball valves INOX AISI 316

Le valvole a sfera mini (codici 9170 e 9180) sono realizzate completamente in INOX AISI 316.

La leva è in alluminio e la guarnizione della sede sfera è in PTFE (Teflon).

La pressione massima d'esercizio è 63 Bar

La temperatura d'esercizio va da -25°C a +180°C

Mini ball valves (codes 9170 & 9180) are manufactured completely in stainless steel AISI 316.

The lever is in aluminium and the gasket seat is in PTFE (Teflon)

The maximum working pressure is 63 bar

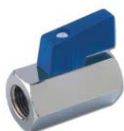
The working temperature is from -25°C to +180°C

Prodotti conformi alla direttiva 2002/95/EC **RoHS**


products in conformity with the directive 2002/95/EC **RoHS**

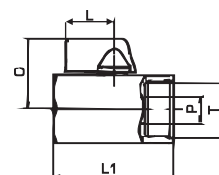
I dati tecnici e le quote non sono vincolanti • drawings and technical data are not binding

9170



valvola a sfera mini F/F INOX AISI 316 • mini ball valve F/F INOX AISI 316


| CODE | T | DN | PN (Bar) | P | L | L1 | C | Peso weight(g) |  |
|----------|-------|----|----------|----|----|----|----|----------------|---|
| 9170TR14 | G1/4" | 6 | 63 | 8 | 22 | 40 | 26 | 83,0 | 1 |
| 9170TR38 | G3/8" | 8 | 63 | 8 | 22 | 40 | 26 | 82,0 | 1 |
| 9170TR12 | G1/2" | 10 | 63 | 10 | 22 | 46 | 28 | 116,0 | 1 |
| 9170TR34 | G3/4" | 12 | 63 | 12 | 22 | 51 | 34 | 193,0 | 1 |



9180



valvola a sfera mini M/F INOX AISI 316 • mini ball valve M/F INOX AISI 316

| CODE | T1 | T2 | PN (Bar) | DN | P | L | L1 | C | Peso weight(g) |  |
|----------|-------|-------|----------|----|----|----|----|----|----------------|---|
| 9180TR14 | R1/4" | G1/4" | 63 | 6 | 8 | 22 | 42 | 26 | 104,0 | 1 |
| 9180TR38 | R3/8" | G3/8" | 63 | 8 | 8 | 22 | 42 | 26 | 92,0 | 1 |
| 9180TR12 | R1/2" | G1/2" | 63 | 10 | 10 | 22 | 46 | 28 | 125,0 | 1 |
| 9180TR34 | R3/4" | G3/4" | 63 | 12 | 12 | 22 | 54 | 34 | 211,0 | 1 |

